

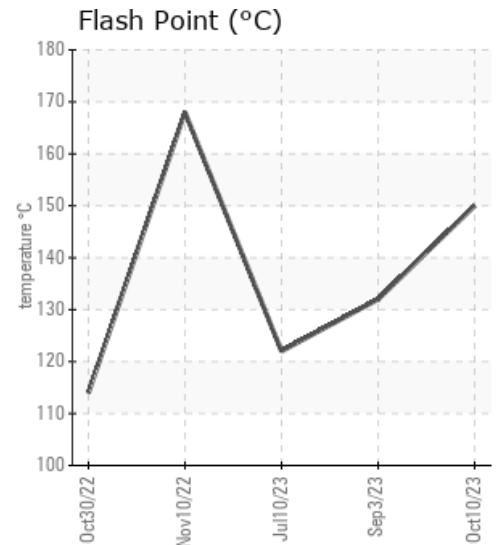
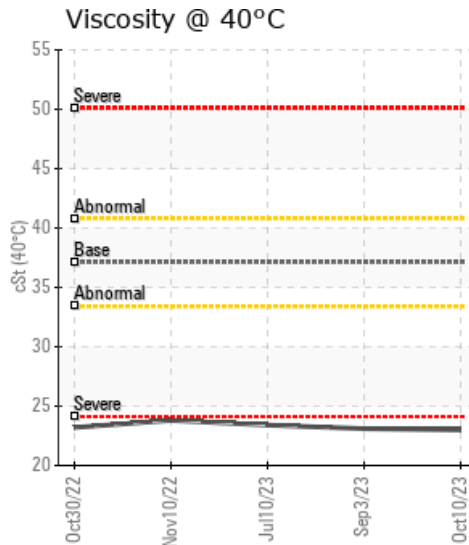
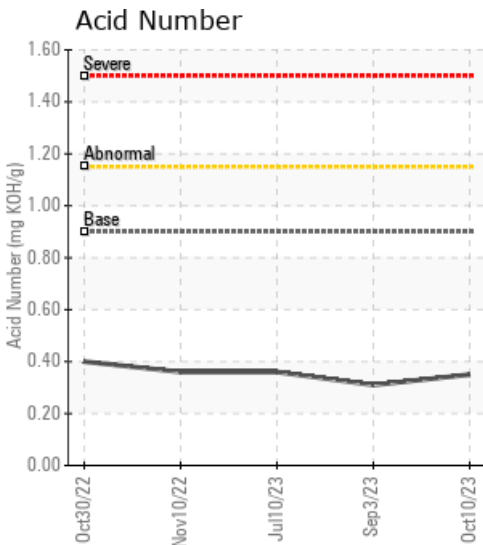
GFPT THAILAND LINE 1/5

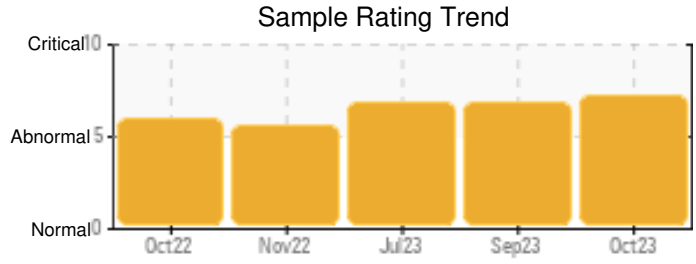
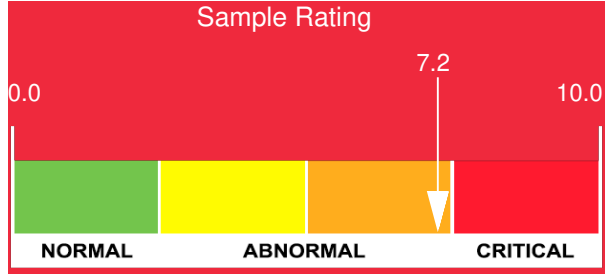
Customer: PTRHTF60010	System Information	Sample Information
SYNLUBE INTERNATIONAL CO LTD 76/1 MOO.7 THACHIN MUANG SAMUTSAKHON, 74000 TH Attn: CHERNPORN CHOBKUI Tel: 034421290 E-Mail: chernporn@synlube.co.th	System Volume: 16000 ltr Bulk Operating Temp: 554F / 290C Heating Source: Blanket: Fluid: PETRO CANADA PURITY FG HEAT TRANSFER FLUID Make: WANSON	Lab No: 02592780 Analyst: Bill Quesnel CLS,OMA II,MLA-III,LLA-I Sample Date: 10/10/23 Received Date: 10/30/23 Completed: 11/10/23 Bill Quesnel CLS,OMA II,MLA-III,LLA-I

Recommendation: We recommend that you vent the expansion tank to remove low boilers which assists in restoring the flash point of the fluid. We recommend an early resample to monitor this condition.

Comments: COC Flash Point is severely low. (GCD) 90% Distillation Point is abnormally high. (GCD) 10% Distillation Point is severely low. Visc @ 40°C is abnormally low. (GCD) % < 335°C is marginally high.

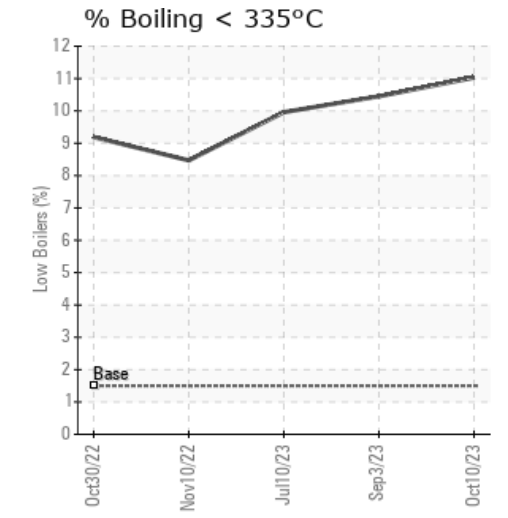
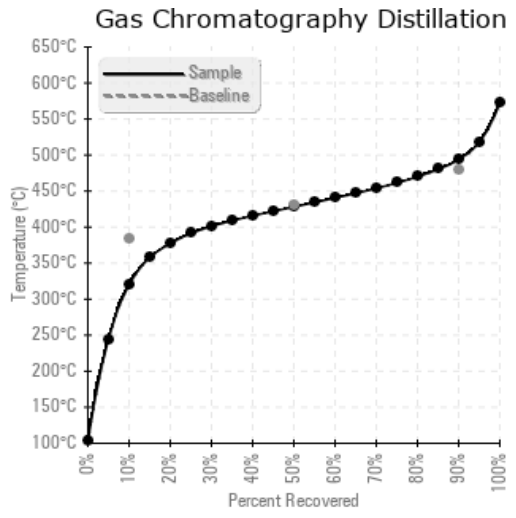
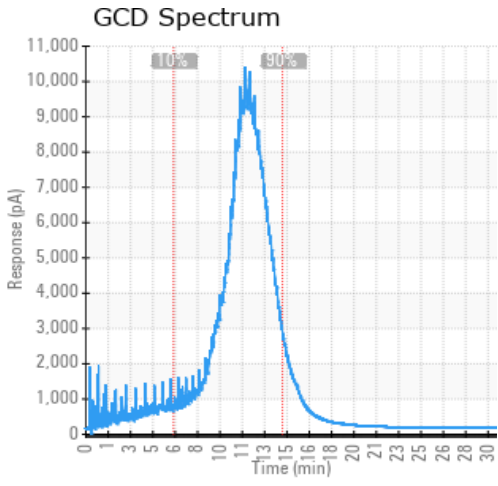
Sample Date	Received Date	Fluid Age	Sample Location	Flash Point (COC)	Water (KF)	Viscosity (40°C)	Acid Number	Solids	GCD 10%	GCD 50%	GCD 90%	GCD % < 335°C
	mm/dd/yy			°F/°C	ppm	cSt	mg/KOH/g	%wt	°F/°C	°F/°C	°F/°C	%
10/10/23	10/30/23	0.0m		302 / 150	22.4	23.0	0.35	0.028	607 / 320	803 / 428	921 / 494	11.03
09/03/23	09/13/23	29.0m		270 / 132	16.2	23.1	0.31	0.031	617 / 325	805 / 429	922 / 494	10.45
07/10/23	07/14/23	27.0m		252 / 122	21.6	23.4	0.36	0.032	627 / 331	807 / 430	923 / 495	9.96
11/10/22	12/22/22	18.0m		334 / 168	18.3	23.8	0.36	0.036	652 / 345	810 / 432	925 / 496	8.47
10/30/22	11/15/22	17.0m	SUPPLY RETURN	237 / 114	24.5	23.2	0.40	0.161	641 / 339	808 / 431	921 / 494	9.19
Baseline Data				459 / 237		37.12	0.90		721 / 383	807 / 431	892 / 478	1.5





Sample Date	Iron	Chromium	Nickel	Aluminum	Copper	Lead	Tin	Cadmium	Silver	Vanadium	Silicon	Sodium	Potassium	Titanium	Molybdenum	Antimony	Manganese	Lithium	Boron	Magnesium	Calcium	Barium	Phosphorus	Zinc
10/10/23	0	0	0	0	0	0	0	0	0	0	0	0	0	0	0	0	0	0	0	0	0	0	5	0
09/03/23	0	0	0	0	0	0	0	0	0	0	0	0	0	0	0	0	0	0	0	0	0	0	6	1
07/10/23	0	0	0	0	0	0	0	0	0	0	0	0	0	0	0	0	0	0	0	0	0	0	6	1
11/10/22	0	0	0	0	0	0	0	0	0	0	0	0	0	0	0	0	0	0	1	0	0	0	6	0
10/30/22	0	0	0	0	0	0	0	0	0	0	0	0	0	0	0	0	0	0	0	0	0	0	4	0
Baseline Data			0	0						0			0	0				0	0				230	

Elemental analysis results (above) in parts per million (ppm). [10,000 ppm = 1.0%]



Historical Comments

09/03/23	We recommend that you vent the expansion tank to remove low boilers which assists in restoring the flash point of the fluid. We recommend an early resample to monitor this condition. COC Flash Point is severely low. (GCD) 90% Distillation Point is abnormally high. (GCD) 10% Distillation Point is severely low. Visc @ 40°C is abnormally low. (GCD) % < 335°C is marginally high.
07/10/23	We recommend that you vent the expansion tank to remove low boilers which assists in restoring the flash point of the fluid. We recommend an early resample to monitor this condition. COC Flash Point is severely low. (GCD) 90% Distillation Point is abnormally high. (GCD) 10% Distillation Point is severely low. Visc @ 40°C is abnormally low. (GCD) % < 335°C is marginally high.
11/10/22	We recommend that you vent the expansion tank to remove low boilers which assists in restoring the flash point of the fluid. We recommend an early resample to monitor this condition. COC Flash Point is severely low. (GCD) 90% Distillation Point is abnormally high. Visc @ 40°C is abnormally low. (GCD) % < 335°C is marginally high. (GCD) 10% Distillation Point is marginally low.
10/30/22	We recommend that you vent the expansion tank to remove low boilers which assists in restoring the flash point of the fluid. We recommend an early resample to monitor this condition. COC Flash Point is severely low. (GCD) 90% Distillation Point is abnormally high. (GCD) 10% Distillation Point is abnormally low. Visc @ 40°C is abnormally low. (GCD) % < 335°C is marginally high.

Petro-Canada makes no representation or warranty of any kind, either express or implied, as to the accuracy or completeness of the analysis and assumes no responsibility and shall have no liability whatsoever with respect to such analysis, or a party's use of it. Petro-Canada is a division of HollyFrontier Corporation.