

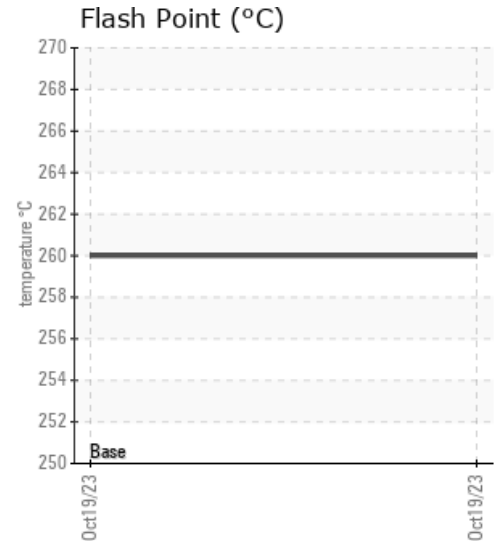
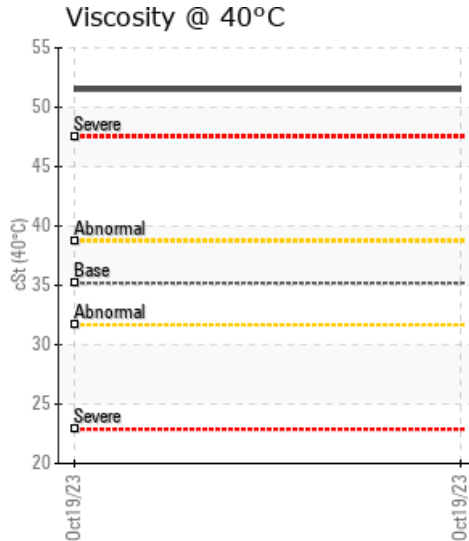
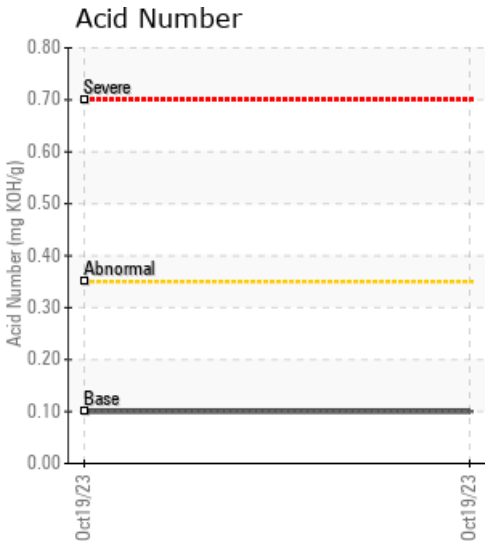
WFE HOT OIL

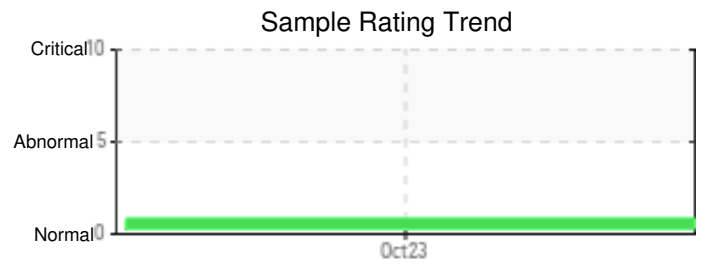
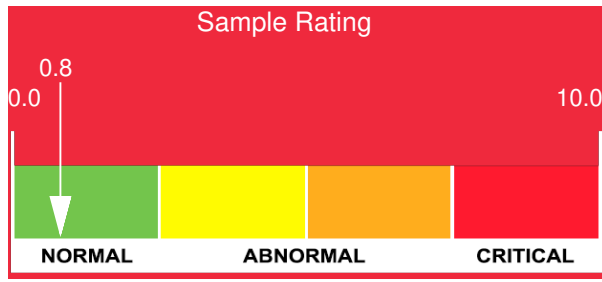
Customer: PTRHTF10166	System Information	Sample Information
ASCEND PERFORMANCE MATERIALS 1050 CHEMSTRAND AVE HWY 20 DECATUR, AL 35601 US Attn: Nicholas Ward Tel: (256)552-2048 E-Mail: nward@ascendmaterials.com	System Volume: 650 gal Bulk Operating Temp: 572F / 300C Heating Source: Blanket: Fluid: PETRO CANADA CALFLO HTF Make: HEAT EXCHANGE AND	Lab No: 02593067 Analyst: Jake Finn Sample Date: 10/19/23 Received Date: 10/31/23 Completed: 11/01/23 Jake Finn jake.finn@HFSinclair.com

Recommendation: Overall sample is in good condition, except for viscosity. Viscosity at 40C is at 51.5 cSt, severely high. Viscosity was run twice to confirm. There are no other signs of oxidation, component wear, or contamination.

Comments: Visc @ 40°C is severely high.

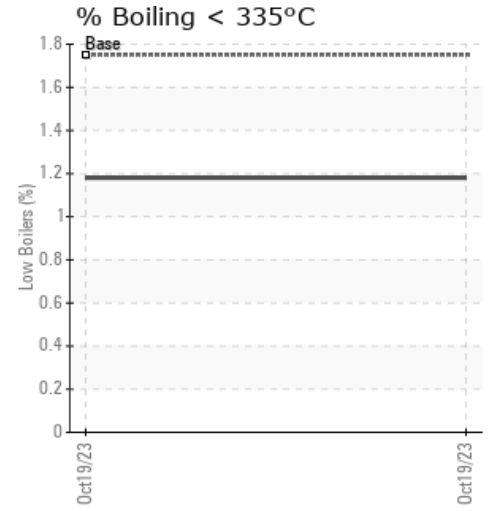
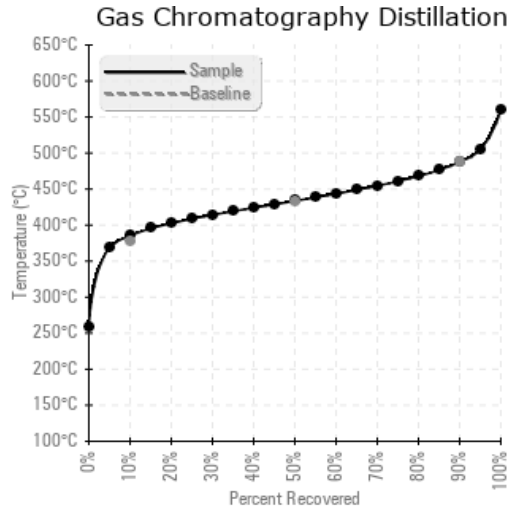
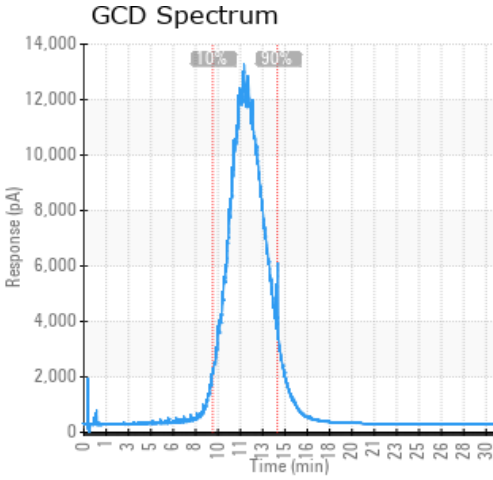
Sample Date	Received Date	Fluid Age	Sample Location	Flash Point (COC)	Water (KF)	Viscosity (40°C)	Acid Number	Solids	GCD 10%	GCD 50%	GCD 90%	GCD % < 335°C
	mm/dd/yy			°F/°C	ppm	cSt	mg/KOH/g	%wt	°F/°C	°F/°C	°F/°C	%
10/19/23	10/31/23	4.0m		500 / 260	370.5	51.5	0.10	0.354	725 / 385	812 / 434	910 / 488	1.18
Baseline Data				448 / 231		35.20	.1		712 / 378	810 / 432	910 / 488	1.75





Sample Date	Iron	Chromium	Nickel	Aluminum	Copper	Lead	Tin	Cadmium	Silver	Vanadium	Silicon	Sodium	Potassium	Titanium	Molybdenum	Antimony	Manganese	Lithium	Boron	Magnesium	Calcium	Barium	Phosphorus	Zinc
10/19/23	18	0	0	0	0	0	0	0	0	0	2	2	0	0	0	0	0	0	0	0	3	0	290	3
Baseline Data			0	0						0			0	0				0	0				280	

Elemental analysis results (above) in parts per million (ppm). [10,000 ppm = 1.0%]



Historical Comments

Petro-Canada makes no representation or warranty of any kind, either express or implied, as to the accuracy or completeness of the analysis and assumes no responsibility and shall have no liability whatsoever with respect to such analysis, or a party's use of it. Petro-Canada is a division of HollyFrontier Corporation.