

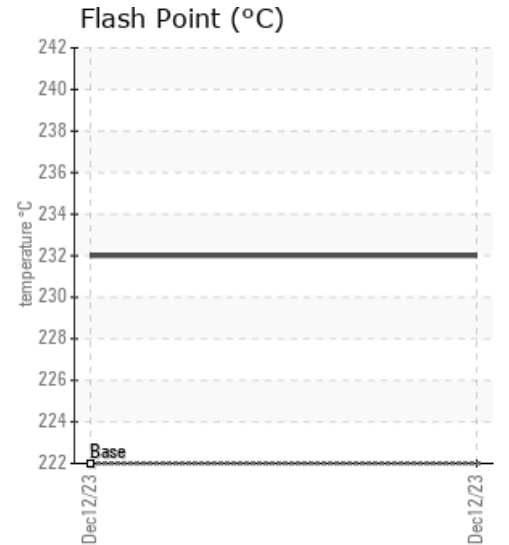
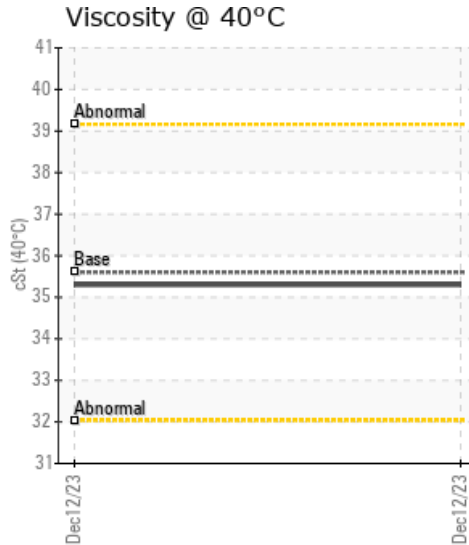
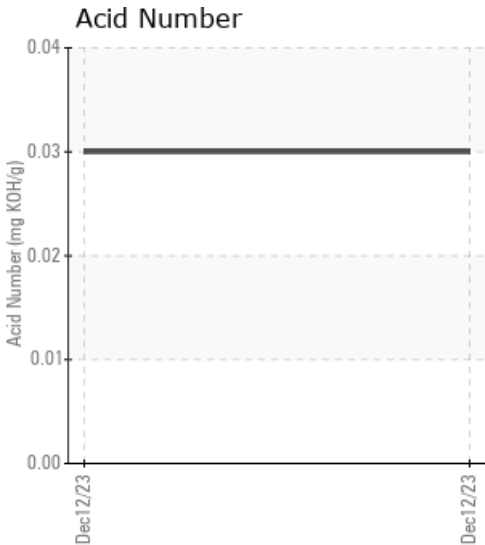
## CALFLO FLUSHING

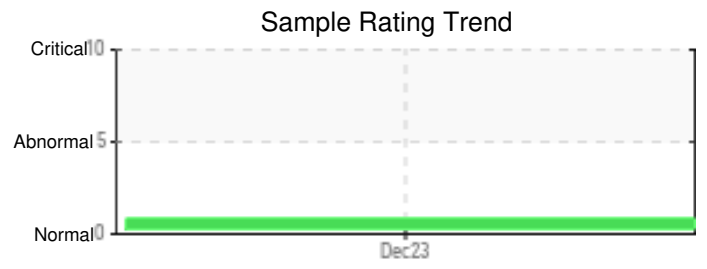
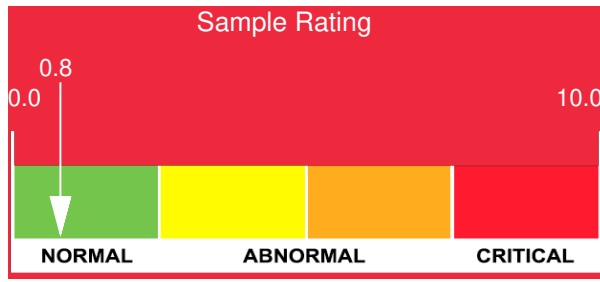
Customer:	System Information	Sample Information
Petro-Canada Technical/Nick Finelli...	System Volume: 0 ltr Bulk Operating Temp: Not Specified Heating Source: Blanket: Fluid: PETRO CANADA CALFLO FLUSHING FLUID Make:	Lab No: 02604940 Analyst: Sample Date: 12/12/23 Received Date: 12/22/23 Completed: 12/31/69

Recommendation: This is a baseline read-out on the submitted sample.

Comments: (GCD) 90% Distillation Point is marginally low.

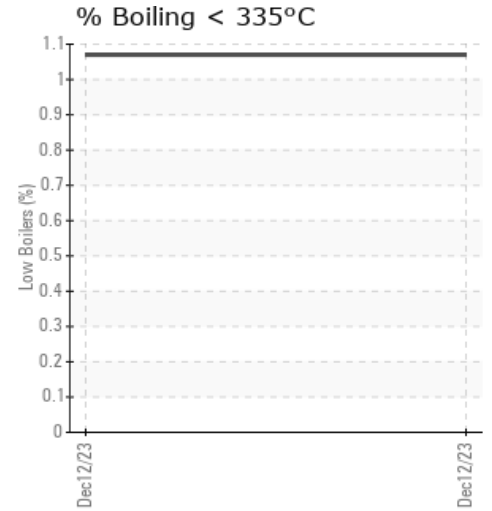
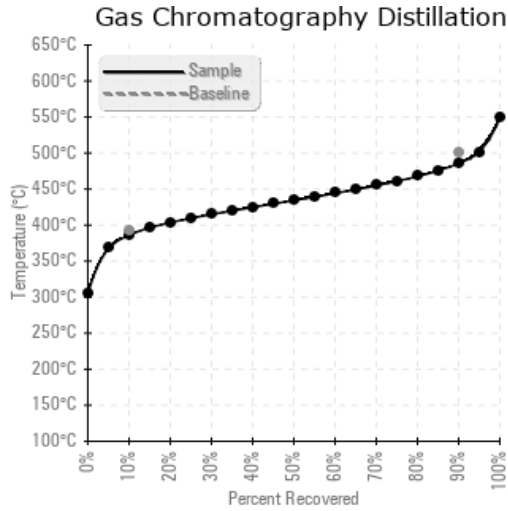
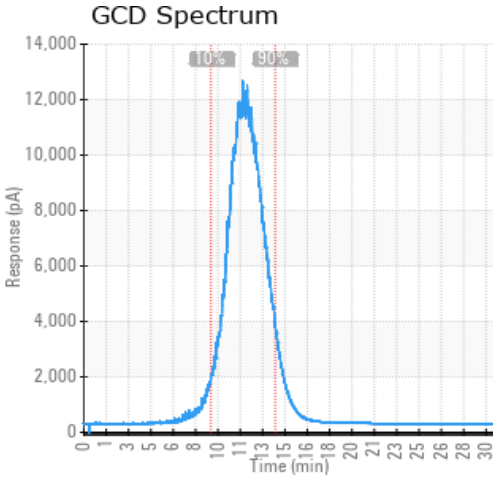
Sample Date	Received Date	Fluid Age	Sample Location	Flash Point (COC)	Water (KF)	Viscosity (40°C)	Acid Number	Solids	GCD 10%	GCD 50%	GCD 90%	GCD % < 335°C
	mm/dd/yy			°F/°C	ppm	cSt	mg/KOH/g	%wt	°F/°C	°F/°C	°F/°C	%
12/12/23	12/22/23	0.0h		450 / 232	0	35.3	0.03	0.047	727 / 386	814 / 434	906 / 486	1.07
Baseline Data				432 / 222		35.6			738 / 392	32 / 0	932 / 500	





Sample Date	Iron	Chromium	Nickel	Aluminum	Copper	Lead	Tin	Cadmium	Silver	Vanadium	Silicon	Sodium	Potassium	Titanium	Molybdenum	Antimony	Manganese	Lithium	Boron	Magnesium	Calcium	Barium	Phosphorus	Zinc
12/12/23	0	0	0	0	0	0	0	0	0	0	0	0	0	0	0	0	0	0	2	9	14	0	11	13
Baseline Data			0	0						0			0	0				0	0				0	

Elemental analysis results (above) in parts per million (ppm). [10,000 ppm = 1.0%]



### Historical Comments


Petro-Canada makes no representation or warranty of any kind, either express or implied, as to the accuracy or completeness of the analysis and assumes no responsibility and shall have no liability whatsoever with respect to such analysis, or a party's use of it. Petro-Canada is a division of HollyFrontier Corporation.