

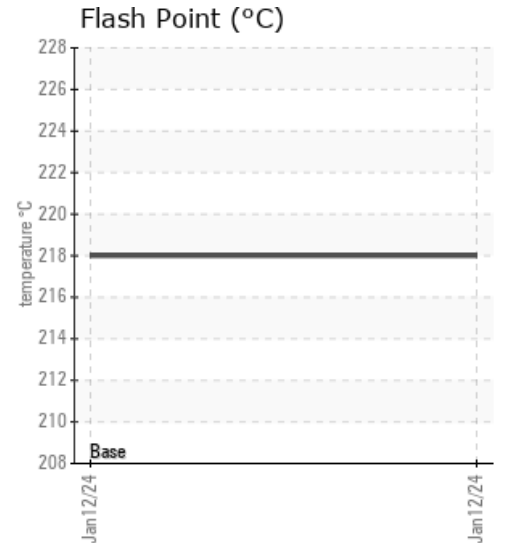
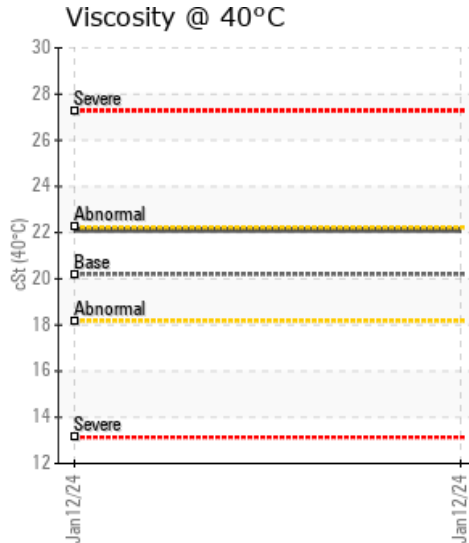
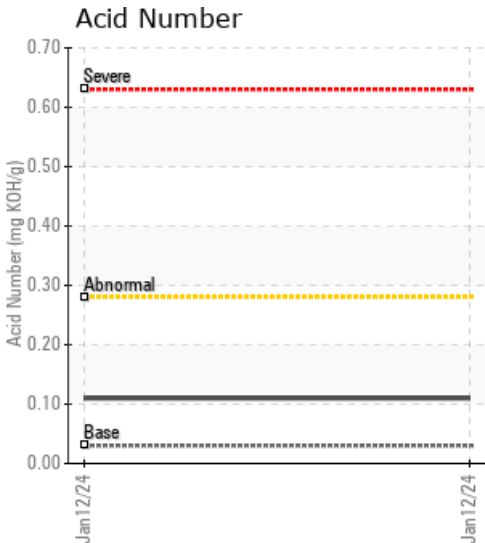
## PG TANK FARM

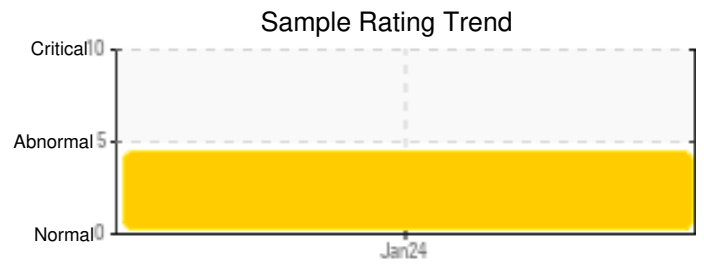
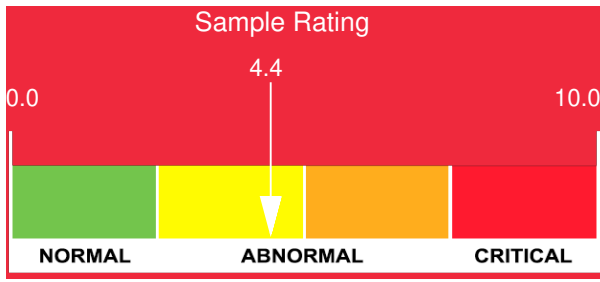
Customer: PTRHTF60055	System Information	Sample Information
GLENN O HAWBAKER INC 458 EAST COLLEGE AVE BELLEFONTE, PA 16823 US Attn: Scott Letterman Tel: (814)359-9394 E-Mail: spl@goh-inc.com	System Volume: 4500 gal Bulk Operating Temp: 400F / 204C Heating Source: Blanket: Fluid: MOBIL MOBILTHERM 603 Make: AMERICAN HEATER	Lab No: 02613835 Analyst: Greg Fernandez Sample Date: 01/12/24 Received Date: 02/06/24 Completed: 02/14/24 Greg Fernandez gregory.fernandez@hfsinclair.com

Recommendation: Resample at next sample interval for continued oil system condition monitoring. Watch point on Calcium level in this fluid. The fluid is suitable for continued service and for topping off with a comparable Petro Canada Heat Transfer Fluid if necessary.

Comments: No abnormal wear rates reported for the fluid or for elements typical of system components. The oil sample results for this system show a fluid in generally good overall condition, particularly for its age. The sample reports no low boilers, contaminants, or water present, with the exception of a high reported Calcium level. Viscosity is appropriate for an ISO 22 fluid. Calcium ppm levels are severely high and warrant future monitoring. Although not a significant concern for the overall system integrity at this point, continued elevation of Calcium levels would be an indication of some ingress into the system and be reason for investigating the cause and source of entry.

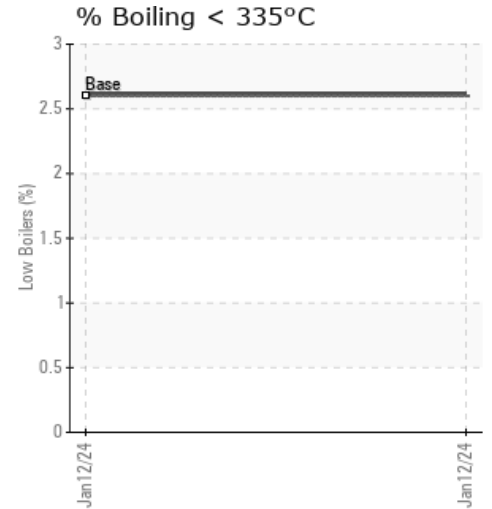
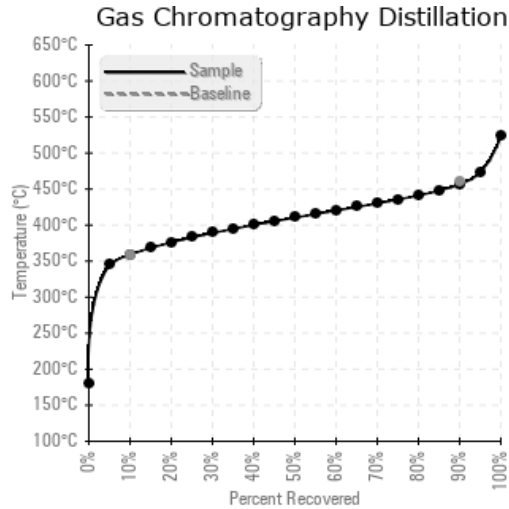
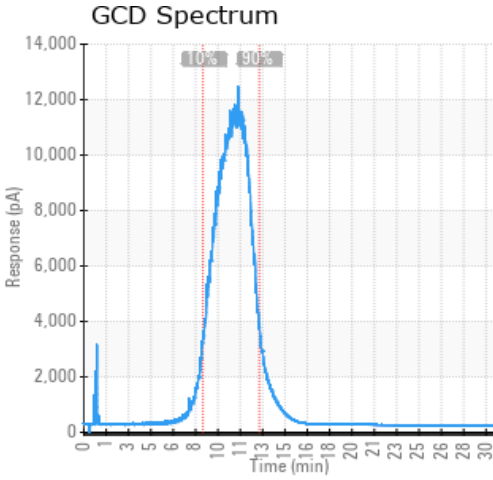
Sample Date	Received Date	Fluid Age	Sample Location	Flash Point (COC)	Water (KF)	Viscosity (40°C)	Acid Number	Solids	GCD 10%	GCD 50%	GCD 90%	GCD % < 335°C
	mm/dd/yy			°F/°C	ppm	cSt	mg/KOH/g	%wt	°F/°C	°F/°C	°F/°C	%
01/12/24	02/06/24	27397.0h	PORT BEFORE STRAINER	424 / 218	47	22.1	0.11	0.059	678 / 359	771 / 410	854 / 457	2.61
Baseline Data				379 / 193		20.2	0.03		676 / 358		858 / 459	2.6





Sample Date	Iron	Chromium	Nickel	Aluminum	Copper	Lead	Tin	Cadmium	Silver	Vanadium	Silicon	Sodium	Potassium	Titanium	Molybdenum	Antimony	Manganese	Lithium	Boron	Magnesium	Calcium	Barium	Phosphorus	Zinc
01/12/24	18	0	0	0	0	0	0	0	0	0	0	3	3	0	0	0	0	0	0	1	77	0	7	5
Baseline Data			0	0						0			0	0					0				0	

Elemental analysis results (above) in parts per million (ppm). [10,000 ppm = 1.0%]



### Historical Comments


Petro-Canada makes no representation or warranty of any kind, either express or implied, as to the accuracy or completeness of the analysis and assumes no responsibility and shall have no liability whatsoever with respect to such analysis, or a party's use of it. Petro-Canada is a division of HollyFrontier Corporation.