

TPC 800 LNE

Customer: PTRHTF40011
 ENCO FOODGROUP BV
 WAAGWEG 5
 OVERIJSEL
 HOLTEN, OVE NL
 Attn: Maintenance Manager
 Tel:
 E-Mail:

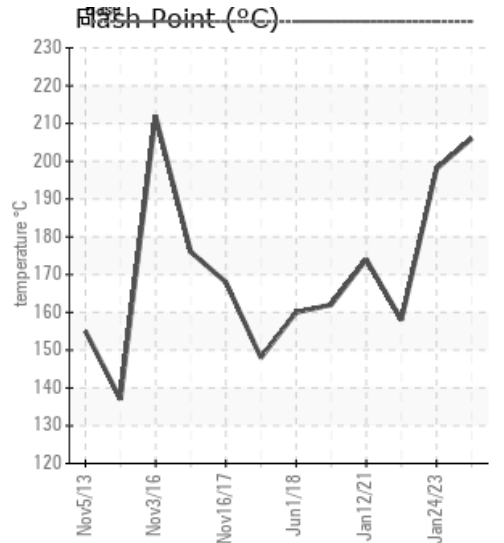
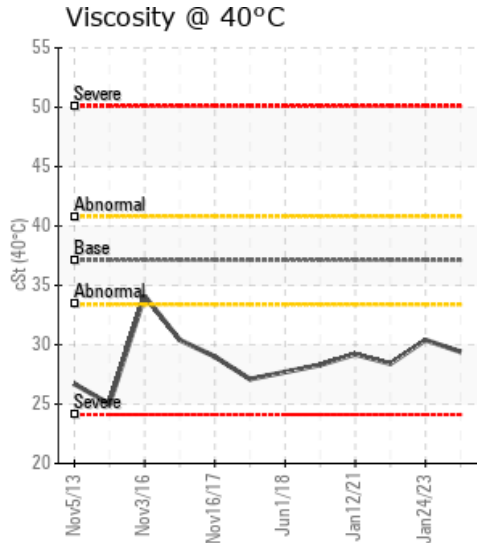
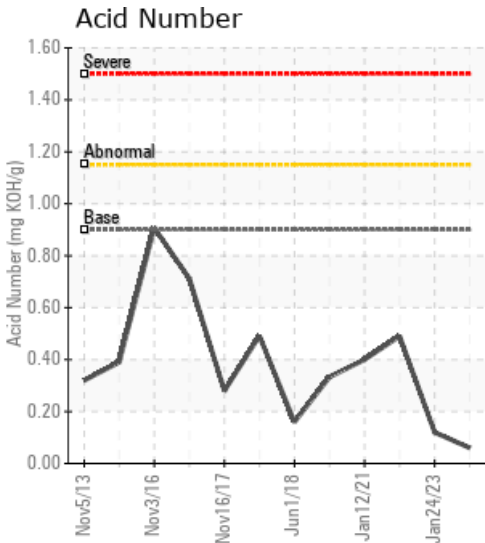
System Information
 System Volume: 2500 ltr
 Bulk Operating Temp: 545F / 285C
 Heating Source:
 Blanket:
 Fluid: PETRO CANADA PURITY FG HEAT TRANSFER FLUID
 Make: WANSON

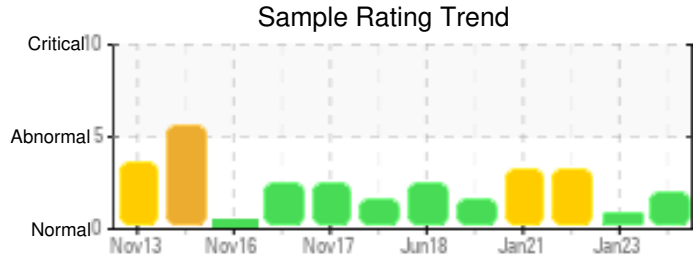
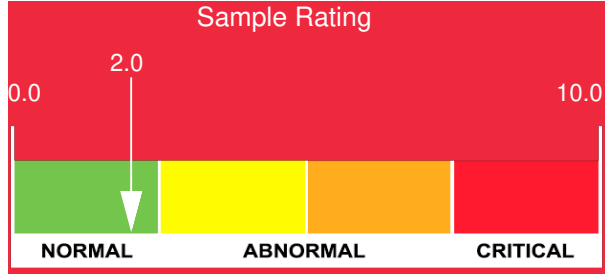
Sample Information
 Lab No: 02615475
 Analyst: Bill Quesnel CLS,OMA II,MLA-III,LLA-I
 Sample Date: 02/08/24
 Received Date: 02/13/24
 Completed: 02/20/24
 Bill Quesnel CLS,OMA II,MLA-III,LLA-I

Recommendation: If you have been venting the expansion tank to remove low boilers, this strategy is working. Continue to vent low boilers to fully restore the flash point.

Comments: COC Flash Point is marginally low.

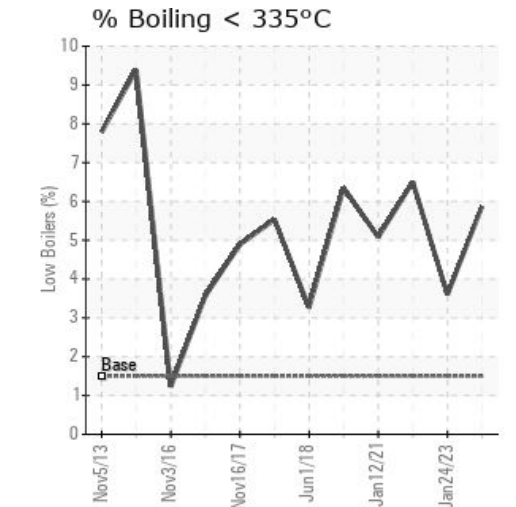
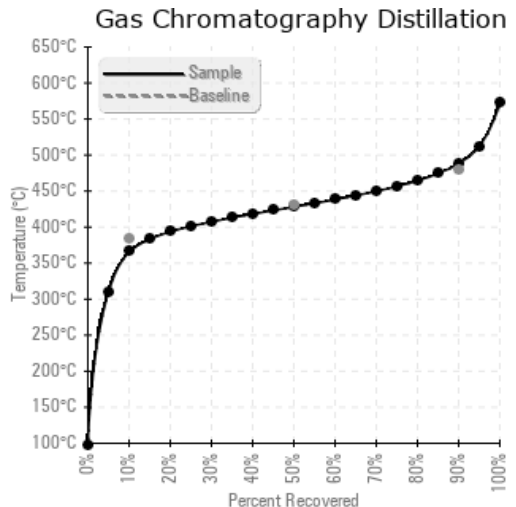
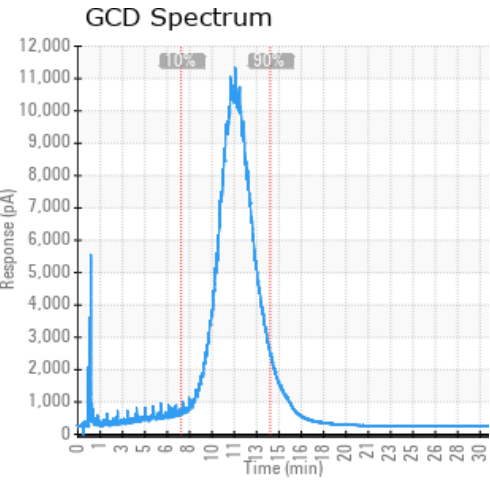
Sample Date	Received Date	Fluid Age	Sample Location	Flash Point (COC)	Water (KF)	Viscosity (40°C)	Acid Number	Solids	GCD 10%	GCD 50%	GCD 90%	GCD % < 335°C
	mm/dd/yy			°F/°C	ppm	cSt	mg/KOH/g	%wt	°F/°C	°F/°C	°F/°C	%
02/08/24	02/13/24	7.3y		403 / 206	31	29.4	0.06	0.137	690 / 366	802 / 428	911 / 488	5.87
01/24/23	01/31/23	6.3y		388 / 198	22.3	30.4	0.12	0.188	708 / 376	805 / 430	910 / 488	3.60
01/02/22	02/08/22	5.3y		316 / 158	49.2	28.4	0.49	0.344	680 / 360	804 / 429	911 / 488	6.50
01/12/21	01/18/21	4.3y		345 / 174	66.8	29.2	0.40	0.616	696 / 369	807 / 430	913 / 489	5.08
07/02/19	07/09/19	2.8y		324 / 162	54.6	28.3	0.333	0.361	677 / 358	800 / 426	910 / 488	6.35
Baseline Data				459 / 237		37.12	0.90		721 / 383	807 / 431	892 / 478	1.5





Sample Date	Iron	Chromium	Nickel	Aluminum	Copper	Lead	Tin	Cadmium	Silver	Vanadium	Silicon	Sodium	Potassium	Titanium	Molybdenum	Antimony	Manganese	Lithium	Boron	Magnesium	Calcium	Barium	Phosphorus	Zinc
02/08/24	63	0	0	0	16	0	0	0	0	0	0	0	0	0	0	0	0	0	0	0	0	0	9	0
01/24/23	104	0	0	0	11	0	0	0	0	0	2	0	0	0	0	0	0	0	0	0	0	0	21	0
01/02/22	266	1	0	0	3	0	0	0	0	0	4	0	0	0	0	0	2	0	1	0	1	0	66	1
01/12/21	151	0	0	0	4	0	0	0	0	0	2	0	0	0	0	0	2	0	0	0	0	0	49	0
07/02/19	89	0	0	0	4	0	0	0	0	0	1	0	0	0	0	0	0	0	0	0	0	0	29	0
Baseline Data			0	0						0			0	0				0	0				230	

Elemental analysis results (above) in parts per million (ppm). [10,000 ppm = 1.0%]



Historical Comments	
01/24/23	If you have been venting the expansion tank to remove low boilers, this strategy is working. Continue to vent low boilers to fully restore the flash point. COC Flash Point is marginally low.
01/02/22	COC Flash Point is lower than the previous sample. Recommend to vent off the system (safely) and see if the flash point can be raised. If not consider changing the oil. Iron ppm levels are abnormal possibly as the result of some corrosion present in the system. COC Flash Point is severely low. (GCD) 90% Distillation Point is marginally high.
01/12/21	COC Flash Point low but GCD % 335 °C and GCD 10% still ok. Recommend to vent off the system (safely) and see if the flash point can be raised. If not consider changing the oil. Pentane Insolubles levels are severely high. COC Flash Point is severely low. (GCD) 90% Distillation Point is marginally high.
07/02/19	COC Flash Point low. GCD backs up by showing high presence of light end materials. Recommend to vent off the system (safely) and see if the flash point can be raised. If not consider changing the oil. COC Flash Point is severely low. (GCD) 90% Distillation Point is abnormally low.

Petro-Canada makes no representation or warranty of any kind, either express or implied, as to the accuracy or completeness of the analysis and assumes no responsibility and shall have no liability whatsoever with respect to such analysis, or a party's use of it. Petro-Canada is a division of HollyFrontier Corporation.