

CARGILL MEAT (THAILAND) SARABURI

Customer: PTRHTF60010
 SYNLUBE INTERNATIONAL CO LTD
 76/1 MOO.7 THACHIN
 MUANG SAMUTSAKHON, 74000 TH
 Attn: CHERNPORN CHOBKUI
 Tel: 034421290
 E-Mail: chernporn@synlube.co.th

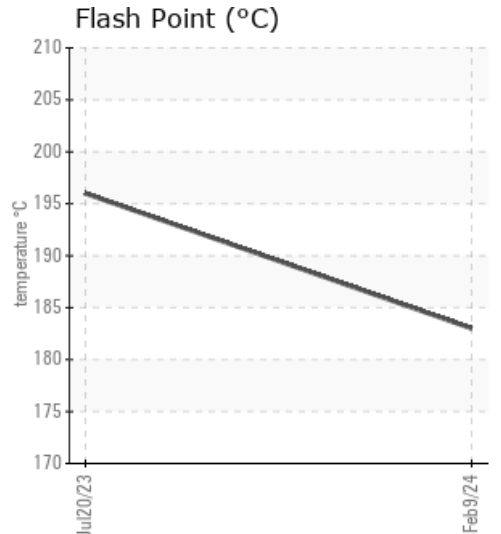
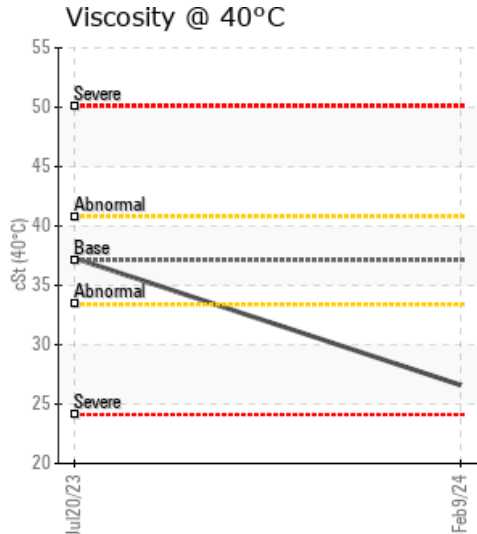
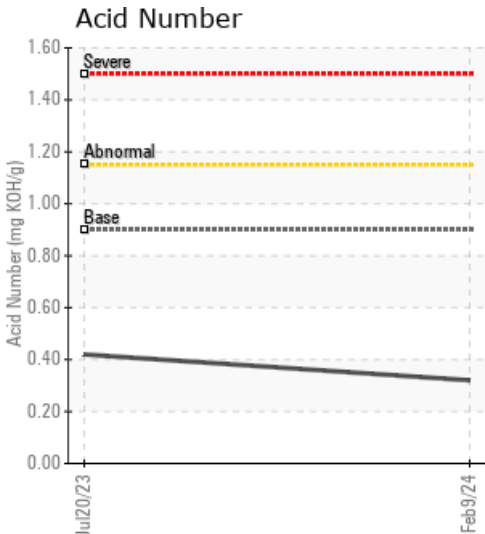
System Information
 System Volume: 10000 ltr
 Bulk Operating Temp: 554F / 290C
 Heating Source:
 Blanket:
 Fluid: PETRO CANADA PURITY FG HEAT TRANSFER FLUID
 Make: WANSON

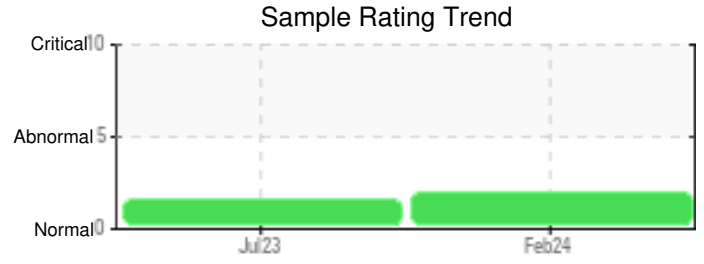
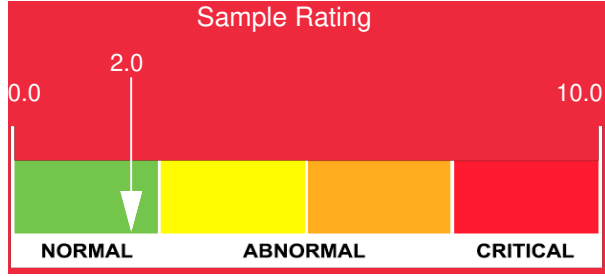
Sample Information
 Lab No: 02618526
 Analyst: Bill Quesnel CLS, OMA II, MLA-III, LLA-I
 Sample Date: 02/09/24
 Received Date: 02/27/24
 Completed: 03/05/24
 Bill Quesnel CLS, OMA II, MLA-III, LLA-I

Recommendation: We recommend that you vent the expansion tank to remove low boilers which assists in restoring the flash point of the fluid. We recommend an early resample to monitor this condition.

Comments: (GCD) 90% Distillation Point is abnormally high. COC Flash Point is abnormally low. Visc @ 40°C is abnormally low.

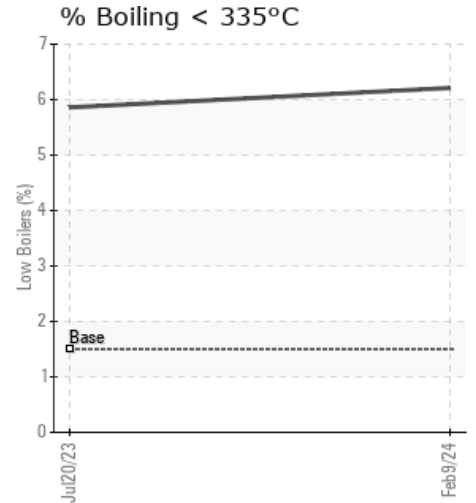
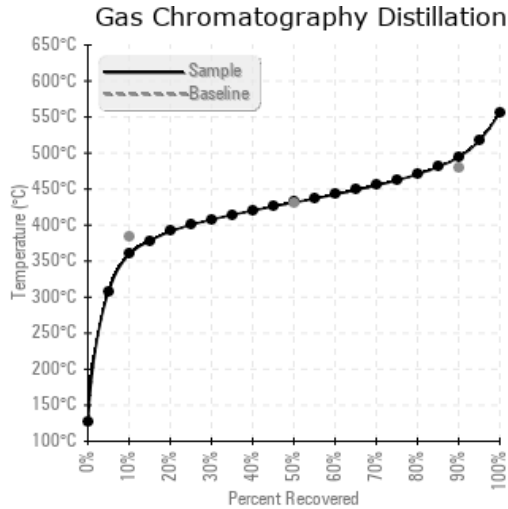
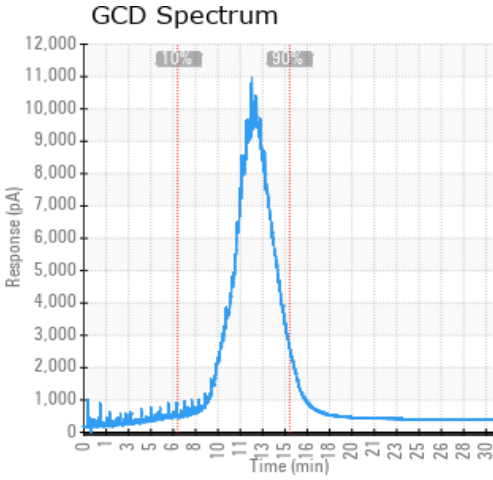
Sample Date	Received Date	Fluid Age	Sample Location	Flash Point (COC)	Water (KF)	Viscosity (40°C)	Acid Number	Solids	GCD 10%	GCD 50%	GCD 90%	GCD % < 335°C
	mm/dd/yy			°F/°C	ppm	cSt	mg/KOH/g	%wt	°F/°C	°F/°C	°F/°C	%
02/09/24	02/27/24	15.0m		361 / 183	35	26.6	0.32	0.037	679 / 359	808 / 431	922 / 494	6.21
07/20/23	08/08/23	12.0m		385 / 196	191.7	37.3	0.42	0.032	683 / 362	808 / 431	913 / 490	5.86
Baseline Data				459 / 237		37.12	0.90		721 / 383	807 / 431	892 / 478	1.5





Sample Date	Iron	Chromium	Nickel	Aluminum	Copper	Lead	Tin	Cadmium	Silver	Vanadium	Silicon	Sodium	Potassium	Titanium	Molybdenum	Antimony	Manganese	Lithium	Boron	Magnesium	Calcium	Barium	Phosphorus	Zinc
02/09/24	1	0	0	0	0	0	0	0	0	0	0	0	0	0	0	0	0	0	0	0	0	0	8	0
07/20/23	0	0	0	0	0	0	0	0	0	0	0	0	0	0	0	0	0	0	0	0	0	0	9	1
Baseline Data			0	0						0			0	0				0	0				230	

Elemental analysis results (above) in parts per million (ppm). [10,000 ppm = 1.0%]



Historical Comments

07/20/23	Whilst flash point is marginally low, it remains at an acceptable level. Distillation being slightly high also (90%) which indicates some form of cracking producing light ends and heavy molecules. Oil is fit for further use, please re sample at normal frequency (GCD) 90% Distillation Point is marginally high. COC Flash Point is marginally low.
----------	-----------------------------------------------------------------------------------------------------------------------------------------------------------------------------------------------------------------------------------------------------------------------------------------------------------------------------------------------------------

Petro-Canada makes no representation or warranty of any kind, either express or implied, as to the accuracy or completeness of the analysis and assumes no responsibility and shall have no liability whatsoever with respect to such analysis, or a party's use of it. Petro-Canada is a division of HollyFrontier Corporation.