

## [SYNLUBE (THAILAND)] KORAT FP4 THAILAND

**Customer: PTRHTF60010**  
 SYNLUBE INTERNATIONAL CO LTD  
 76/1 MOO.7 THACHIN  
 MUANG SAMUTSAKHON, 74000 TH  
 Attn: CHERNPORN CHOBKUI  
 Tel: 034421290  
 E-Mail: chernporn@synlube.co.th

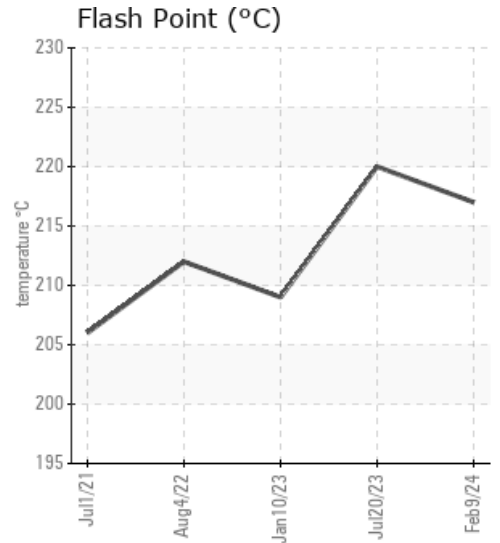
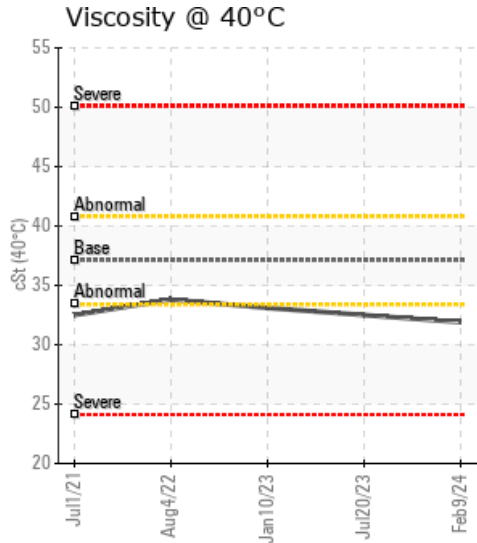
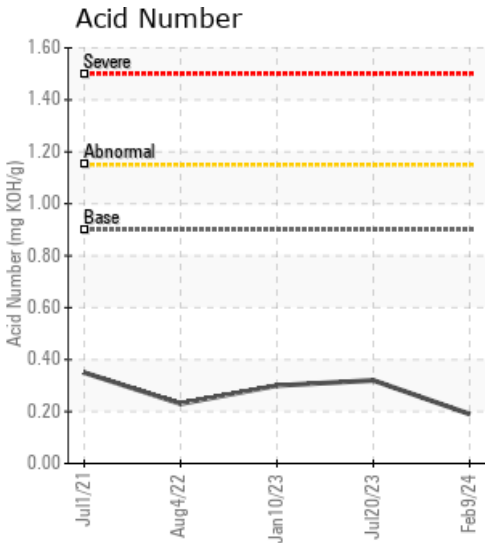
**System Information**  
 System Volume: 20910 ltr  
 Bulk Operating Temp: 554F / 290C  
 Heating Source:  
 Blanket:  
 Fluid: PETRO CANADA PURITY FG HEAT TRANSFER FLUID  
 Make: GETABAC

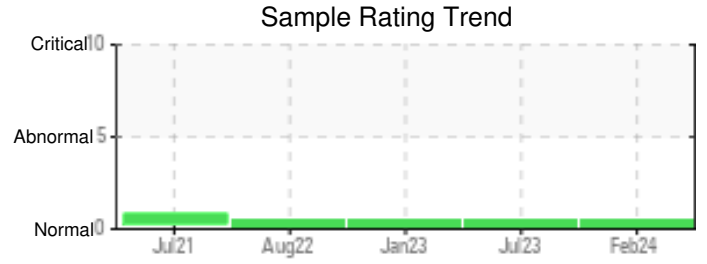
**Sample Information**  
 Lab No: 02618527  
 Analyst: Bill Quesnel CLS,OMA II,MLA-III,LLA-I  
 Sample Date: 02/09/24  
 Received Date: 02/27/24  
 Completed: 03/05/24  
 Bill Quesnel CLS,OMA II,MLA-III,LLA-I

Recommendation: The fluid is suitable for further service. Resample at the next service interval to monitor.

Comments:

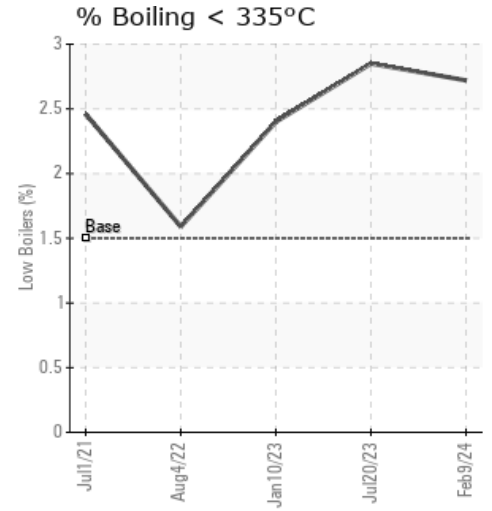
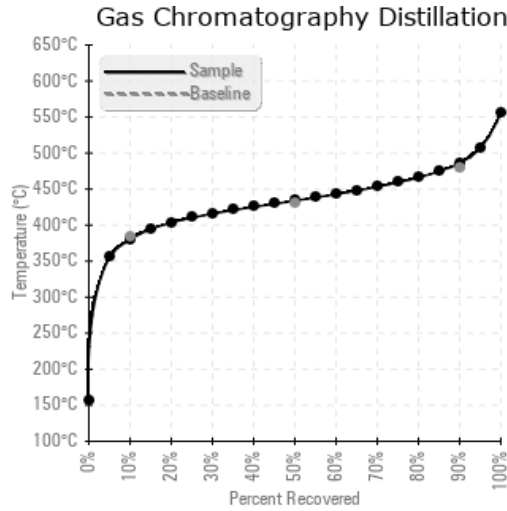
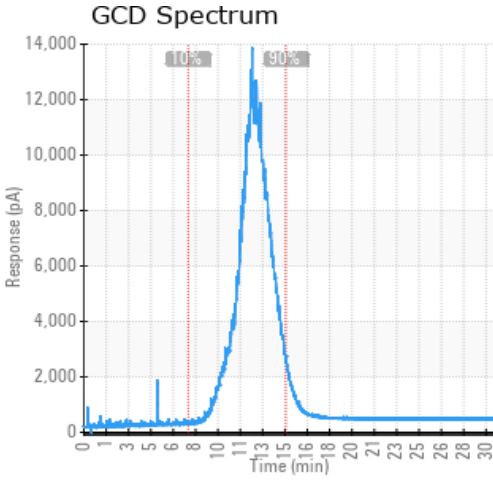
Sample Date	Received Date	Fluid Age	Sample Location	Flash Point (COC)	Water (KF)	Viscosity (40°C)	Acid Number	Solids	GCD 10%	GCD 50%	GCD 90%	GCD % < 335°C
	mm/dd/yy			°F/°C	ppm	cSt	mg/KOH/g	%wt	°F/°C	°F/°C	°F/°C	%
02/09/24	02/27/24	76.0m		423 / 217	45	31.9	0.19	0.047	716 / 380	813 / 434	907 / 486	2.72
07/20/23	08/08/23	69.0m	Hot 1,2	428 / 220	28.2	32.5	0.32	0.062	714 / 379	811 / 433	896 / 480	2.85
01/10/23	02/27/23	63.0m		408 / 209	4.5	33.1	0.30	0.040	718 / 381	812 / 434	895 / 479	2.40
08/04/22	08/22/22	58.0m	HOT 1 2 SUPPLY RETRN	414 / 212	26.8	33.8	0.23	0.059	722 / 384	812 / 433	895 / 479	1.59
07/01/21	04/05/22	51.0m	hOT 1,2	403 / 206	110.7	32.5	0.35	0.065	717 / 381	812 / 433	897 / 481	2.46
Baseline Data				459 / 237		37.12	0.90		721 / 383	807 / 431	892 / 478	1.5





Sample Date	Iron	Chromium	Nickel	Aluminum	Copper	Lead	Tin	Cadmium	Silver	Vanadium	Silicon	Sodium	Potassium	Titanium	Molybdenum	Antimony	Manganese	Lithium	Boron	Magnesium	Calcium	Barium	Phosphorus	Zinc
02/09/24	80	0	0	0	0	0	0	0	0	0	0	0	0	0	0	0	0	0	0	0	0	0	17	2
07/20/23	103	0	0	0	0	1	0	0	0	0	0	0	0	0	0	0	1	0	0	0	0	0	22	4
01/10/23	67	0	0	0	0	0	0	0	0	0	0	0	0	0	0	0	0	0	0	0	0	0	17	2
08/04/22	72	0	0	0	0	0	0	0	0	0	0	0	0	0	0	0	0	0	0	0	0	0	17	2
07/01/21	116	0	0	0	0	0	0	0	0	0	0	0	0	0	0	0	0	0	0	0	1	0	19	2
<b>Baseline Data</b>			0	0						0			0	0				0	0				230	

Elemental analysis results (above) in parts per million (ppm). [10,000 ppm = 1.0%]



### Historical Comments

07/20/23	The fluid is suitable for further service. Resample at the next service interval to monitor.
01/10/23	Fluid parameters suitable for service. Resample at the next service interval to monitor.
08/04/22	Fluid parameters suitable for service. Resample at the next service interval to monitor.
07/01/21	Fluid parameters suitable for service. Resample at the next service interval to monitor. COC Flash Point is marginally low.

Petro-Canada makes no representation or warranty of any kind, either express or implied, as to the accuracy or completeness of the analysis and assumes no responsibility and shall have no liability whatsoever with respect to such analysis, or a party's use of it. Petro-Canada is a division of HollyFrontier Corporation.