

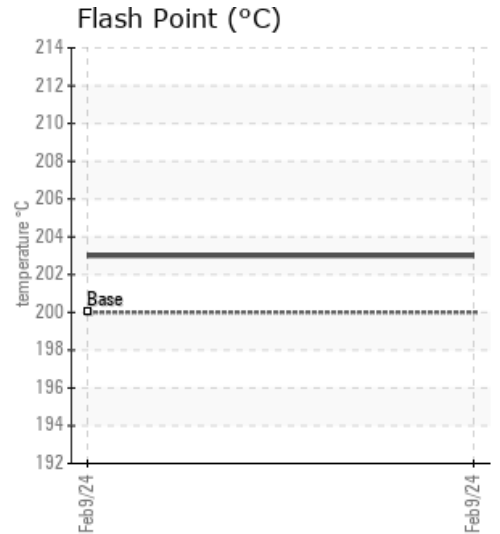
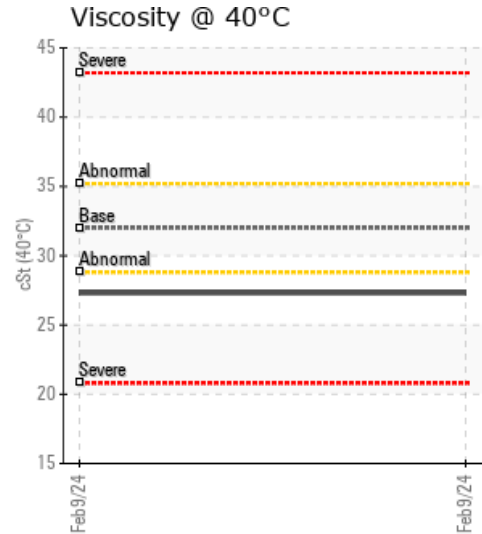
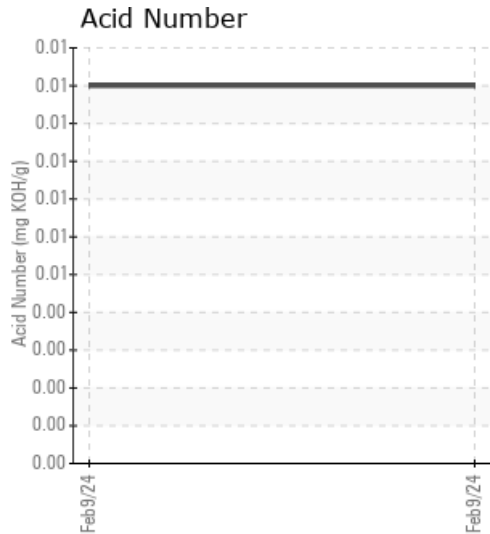
B FOOD TMO5 (THAILAND)

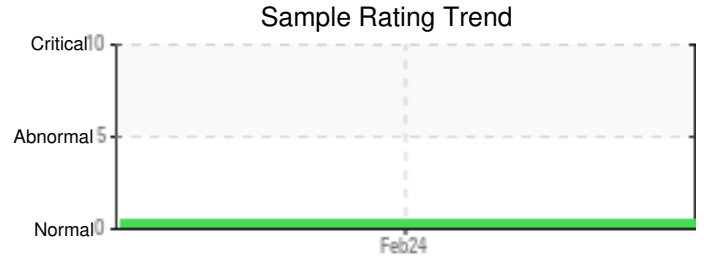
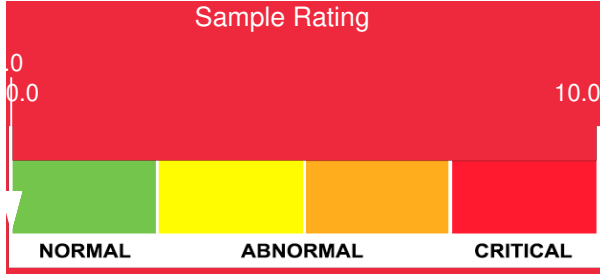
Customer: PTRHTF60010	System Information	Sample Information
SYNLUBE INTERNATIONAL CO LTD 76/1 MOO.7 THACHIN MUANG SAMUTSAKHON, 74000 TH Attn: CHERNPORN CHOBKUI Tel: 034421290 E-Mail: chernporn@synlube.co.th	System Volume: 2600 ltr Bulk Operating Temp: 536F / 280C Heating Source: Blanket: Fluid: TOTAL NEVASTANE HTF Make: HOVEL	Lab No: 02618529 Analyst: Bill Quesnel CLS,OMA II,MLA-III,LLA-I Sample Date: 02/09/24 Received Date: 02/27/24 Completed: 03/05/24 Bill Quesnel CLS,OMA II,MLA-III,LLA-I

Recommendation: The fluid is suitable for further service. Resample at the next service interval to monitor.

Comments:

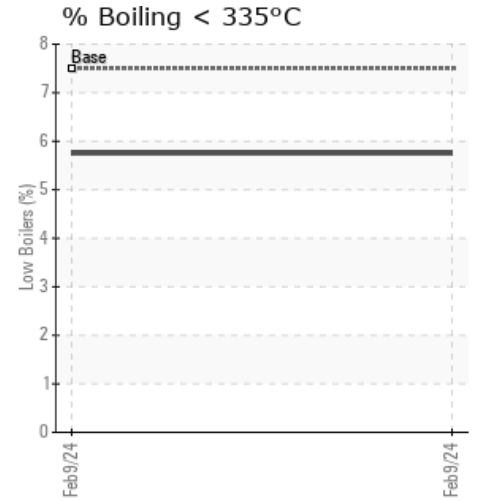
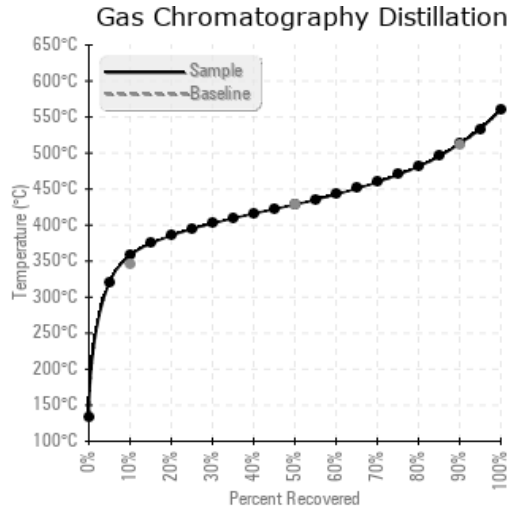
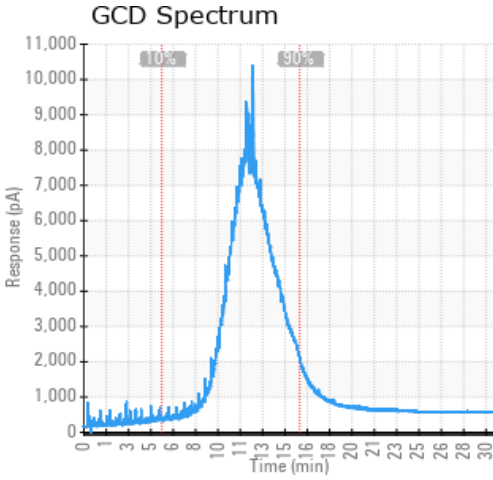
Sample Date	Received Date	Fluid Age	Sample Location	Flash Point (COC)	Water (KF)	Viscosity (40°C)	Acid Number	Solids	GCD 10%	GCD 50%	GCD 90%	GCD % < 335°C
	mm/dd/yy			°F/°C	ppm	cSt	mg/KOH/g	%wt	°F/°C	°F/°C	°F/°C	%
02/09/24	02/27/24	60.0m		397 / 203	30	27.3	0.01	0.061	677 / 358	803 / 429	955 / 513	5.75
Baseline Data				392 / 200		32			655 / 346	802 / 428	952 / 511	7.5





Sample Date	Iron	Chromium	Nickel	Aluminum	Copper	Lead	Tin	Cadmium	Silver	Vanadium	Silicon	Sodium	Potassium	Titanium	Molybdenum	Antimony	Manganese	Lithium	Boron	Magnesium	Calcium	Barium	Phosphorus	Zinc
02/09/24	25	0	0	0	0	0	0	0	0	0	0	0	0	0	0	0	0	0	0	0	0	0	23	0
Baseline Data			0	0						0			0	0					0				0	

Elemental analysis results (above) in parts per million (ppm). [10,000 ppm = 1.0%]



Historical Comments

Petro-Canada makes no representation or warranty of any kind, either express or implied, as to the accuracy or completeness of the analysis and assumes no responsibility and shall have no liability whatsoever with respect to such analysis, or a party's use of it. Petro-Canada is a division of HollyFrontier Corporation.