

MASTERGOOD HTF PTNEHAZA

Customer: PTRHTF40137
 PENZZ-IMPEX KFT
 1132 Victor Hugo U 11-15 4em
 Budapest, 1132 HU
 Attn: Katalin Farkas
 Tel: 3(630)239-9273
 E-Mail: penzz-impex@penzz-impex.hu

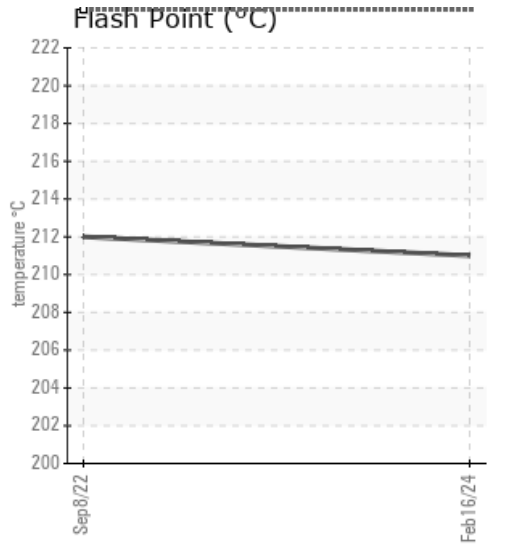
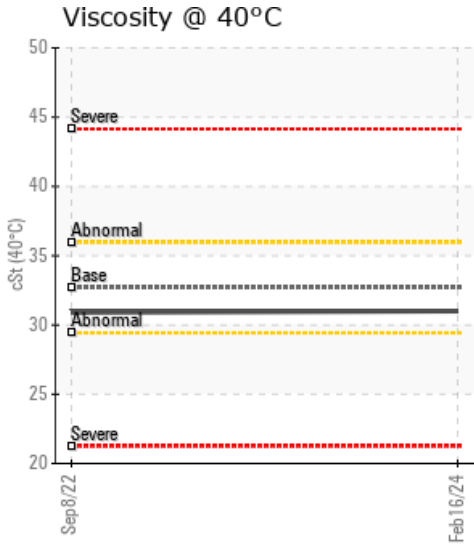
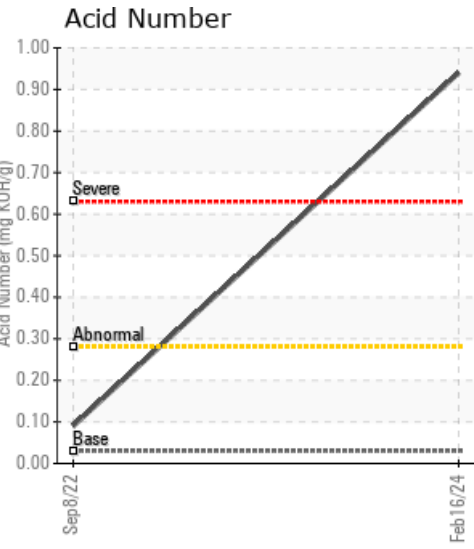
System Information
 System Volume: 0 gal
 Bulk Operating Temp: Not Specified
 Heating Source:
 Blanket:
 Fluid: PETRO CANADA CALFLO AF
 Make: FOOD INDUSTRY

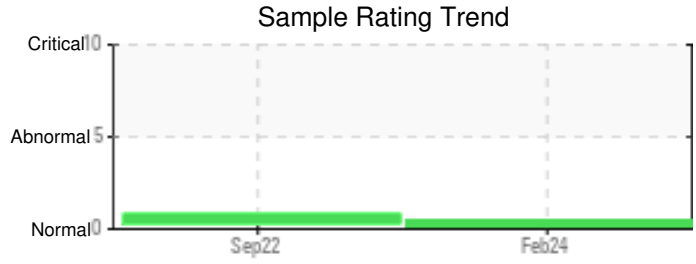
Sample Information
 Lab No: 02618533
 Analyst: Bill Quesnel CLS,OMA II,MLA-III,LLA-I
 Sample Date: 02/16/24
 Received Date: 02/27/24
 Completed: 03/05/24
 Bill Quesnel CLS,OMA II,MLA-III,LLA-I

Recommendation: CAUTION: High water levels in thermal fluids can cause bumping which presents a risk to operators. Ensure that samples are being taken from the correct location. We advise that you follow the water drain-off procedure for this component. We recommend an early resample to monitor this condition.

Comments: Iron ppm levels are abnormal. The high metal levels indicate corrosion in the system. Pentane Insolubles levels are severely high. There is a high concentration of water present in the fluid. (GCD) 90% Distillation Point is severely high. Acid Number (AN) is abnormally high.

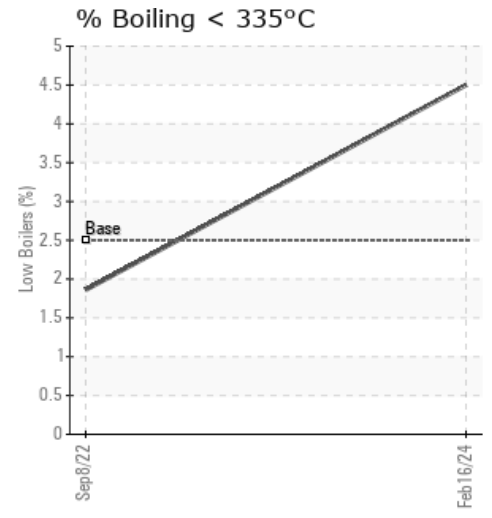
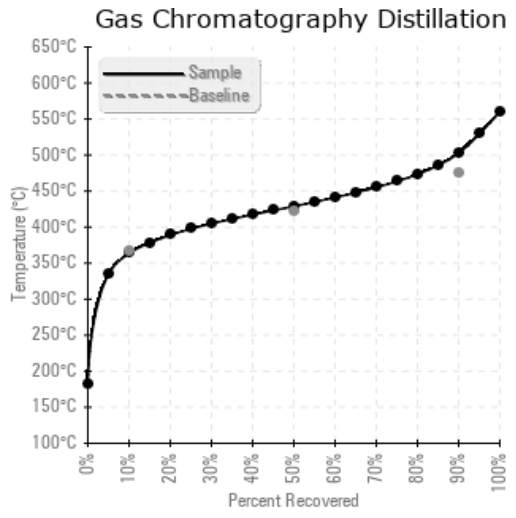
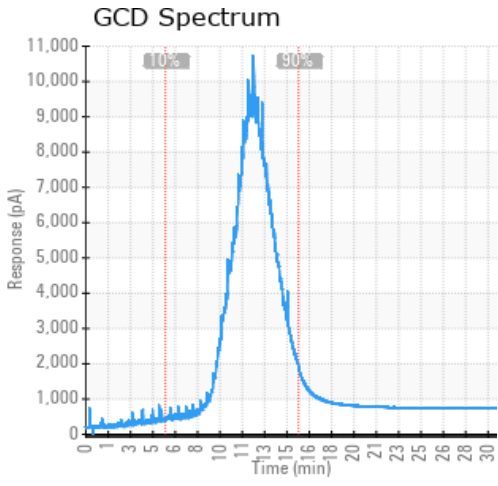
Sample Date	Received Date	Fluid Age	Sample Location	Flash Point (COC)	Water (KF)	Viscosity (40°C)	Acid Number	Solids	GCD 10%	GCD 50%	GCD 90%	GCD % < 335°C
	mm/dd/yy			°F/°C	ppm	cSt	mg/KOH/g	%wt	°F/°C	°F/°C	°F/°C	%
02/16/24	02/27/24	30000.0h		412 / 211	6746	31.0	0.94	1.43	687 / 364	804 / 429	937 / 503	4.50
09/08/22	09/23/22	26057.0h		414 / 212	17.4	30.9	0.09	0.008	706 / 374	804 / 429	907 / 486	1.86
Baseline Data				435 / 224		32.7	0.03		693 / 367	790 / 421	887 / 475	2.5





Sample Date	Iron	Chromium	Nickel	Aluminum	Copper	Lead	Tin	Cadmium	Silver	Vanadium	Silicon	Sodium	Potassium	Titanium	Molybdenum	Antimony	Manganese	Lithium	Boron	Magnesium	Calcium	Barium	Phosphorus	Zinc
02/16/24	184	0	0	0	0	0	0	0	0	0	0	0	1	0	0	0	2	0	2	0	0	0	99	4
09/08/22	0	0	0	0	0	0	0	0	0	0	0	0	0	0	0	0	0	0	0	0	0	0	147	0
Baseline Data			0	0						0			0	0					0				270	

Elemental analysis results (above) in parts per million (ppm). [10,000 ppm = 1.0%]



Historical Comments

09/08/22	The fluid condition is suitable for continued use. Resample in one year to monitor. (GCD) 90% Distillation Point is marginally high.

Petro-Canada makes no representation or warranty of any kind, either express or implied, as to the accuracy or completeness of the analysis and assumes no responsibility and shall have no liability whatsoever with respect to such analysis, or a party's use of it. Petro-Canada is a division of HollyFrontier Corporation.