

# MASTERGOOD HTF PTNEHAZA

**Customer: PTRHTF40137**  
 PENZZ-IMPEX KFT  
 1132 Victor Hugo U 11-15 4em  
 Budapest, 1132 HU  
 Attn: Katalin Farkas  
 Tel: 3(630)239-9273  
 E-Mail: penzz-impex@penzz-impex.hu

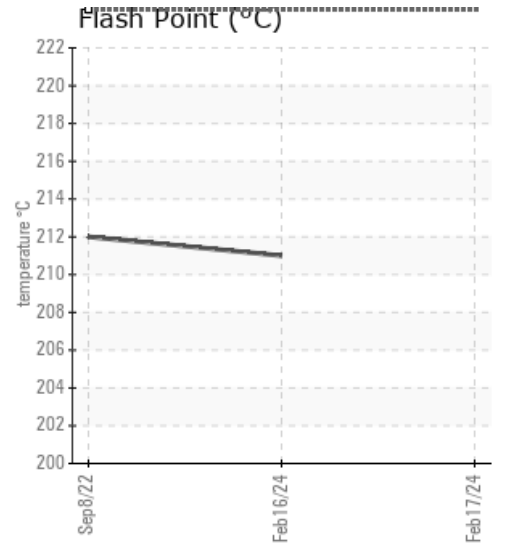
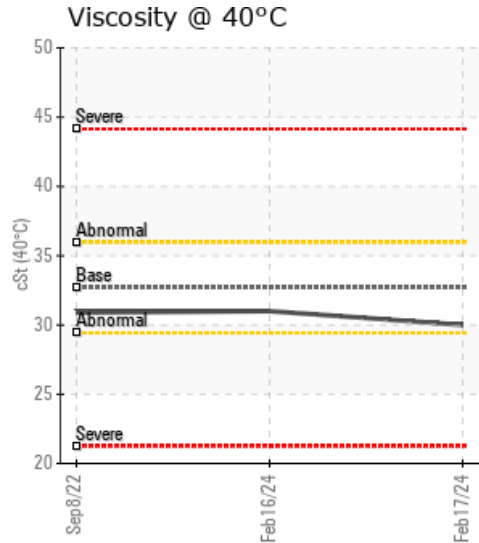
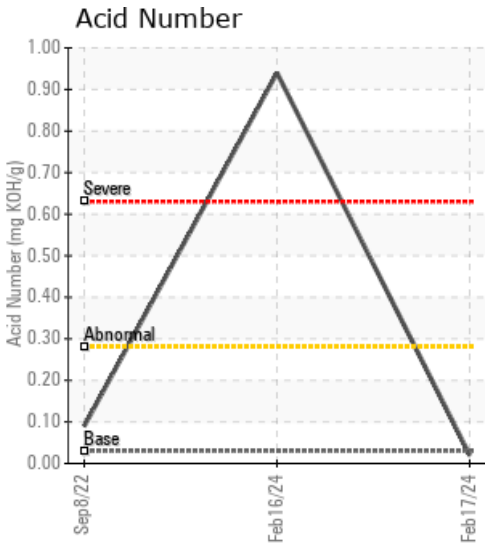
**System Information**  
 System Volume: 0 gal  
 Bulk Operating Temp: Not Specified  
 Heating Source:  
 Blanket:  
 Fluid: PETRO CANADA CALFLO AF  
 Make: FOOD INDUSTRY

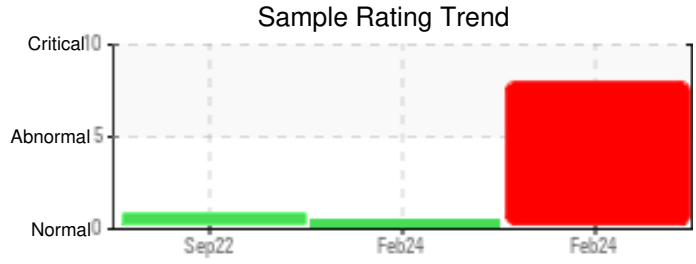
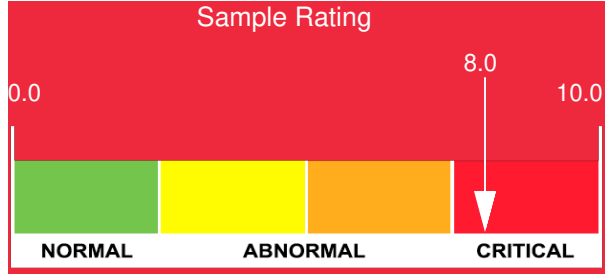
**Sample Information**  
 Lab No: 02618534  
 Analyst: Bill Quesnel CLS,OMA II,MLA-III,LLA-I  
 Sample Date: 02/17/24  
 Received Date: 02/27/24  
 Completed: 03/06/24  
 Bill Quesnel CLS,OMA II,MLA-III,LLA-I

Recommendation: The fluid is suitable for further service. Resample at the next service interval to monitor. \*\*\* NOTE: we could not conduct the COC Flash Point test due to the high concentration of free water present in the sample. \*\*\*

Comments: Water contamination levels are marginally high. (GCD) 90% Distillation Point is marginally high.

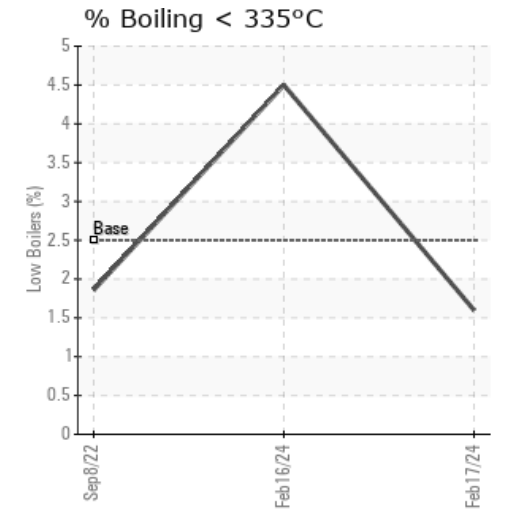
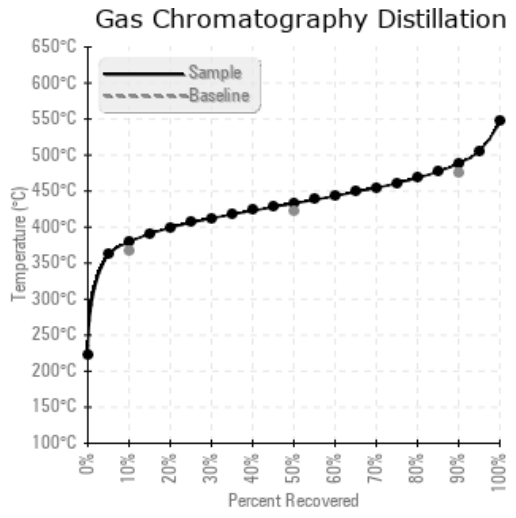
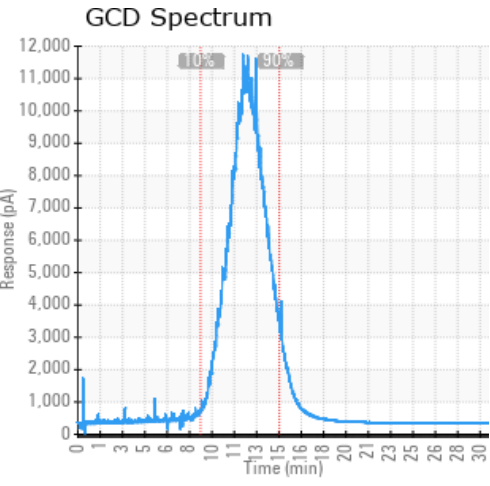
Sample Date	Received Date	Fluid Age	Sample Location	Flash Point (COC)	Water (KF)	Viscosity (40°C)	Acid Number	Solids	GCD 10%	GCD 50%	GCD 90%	GCD % < 335°C
	mm/dd/yy			°F/°C	ppm	cSt	mg/KOH/g	%wt	°F/°C	°F/°C	°F/°C	%
02/17/24	02/27/24	9000.0h			596	30.0	0.02	0.123	715 / 379	811 / 433	911 / 488	1.60
02/16/24	02/27/24	30000.0h		412 / 211	6746	31.0	0.94	1.43	687 / 364	804 / 429	937 / 503	4.50
09/08/22	09/23/22	26057.0h		414 / 212	17.4	30.9	0.09	0.008	706 / 374	804 / 429	907 / 486	1.86
Baseline Data				435 / 224		32.7	0.03		693 / 367	790 / 421	887 / 475	2.5





Sample Date	Iron	Chromium	Nickel	Aluminum	Copper	Lead	Tin	Cadmium	Silver	Vanadium	Silicon	Sodium	Potassium	Titanium	Molybdenum	Antimony	Manganese	Lithium	Boron	Magnesium	Calcium	Barium	Phosphorus	Zinc
02/17/24	12	0	0	0	0	0	0	0	0	0	10	0	0	0	0	0	0	0	0	0	0	0	97	4
02/16/24	184	0	0	0	0	0	0	0	0	0	0	0	1	0	0	0	2	0	2	0	0	0	99	4
09/08/22	0	0	0	0	0	0	0	0	0	0	0	0	0	0	0	0	0	0	0	0	0	0	147	0
<b>Baseline Data</b>			0	0						0			0	0					0				270	

Elemental analysis results (above) in parts per million (ppm). [10,000 ppm = 1.0%]



### Historical Comments

02/16/24	CAUTION: High water levels in thermal fluids can cause bumping which presents a risk to operators. Ensure that samples are being taken from the correct location. We advise that you follow the water drain-off procedure for this component. We recommend an early resample to monitor this condition. Iron ppm levels are abnormal. The high metal levels indicate corrosion in the system. Pentane Insolubles levels are severely high. There is a high concentration of water present in the fluid. (GCD) 90% Distillation Point is severely high. Acid Number (AN) is abnormally high.
09/08/22	The fluid condition is suitable for continued use. Resample in one year to monitor. (GCD) 90% Distillation Point is marginally high.

Petro-Canada makes no representation or warranty of any kind, either express or implied, as to the accuracy or completeness of the analysis and assumes no responsibility and shall have no liability whatsoever with respect to such analysis, or a party's use of it. Petro-Canada is a division of HollyFrontier Corporation.