

[15-31-39-05-W5] H407B

Customer: PTRHTF60059
 Paramount Resources Inc.
 Box 43 Site #4 RR2
 Rocky Mountain House, AB T4T 2A2 CA
 Attn: Curtis Visser
 Tel: (403)846-8001
 E-Mail: curtis.visser@paramountres.com

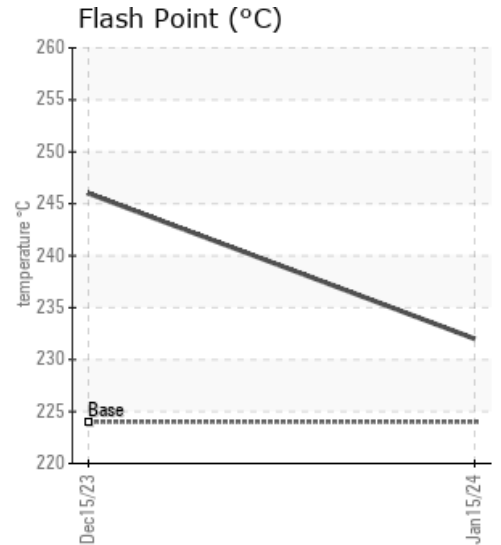
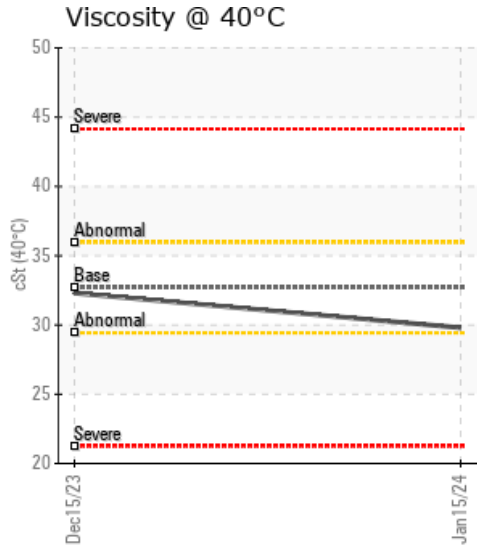
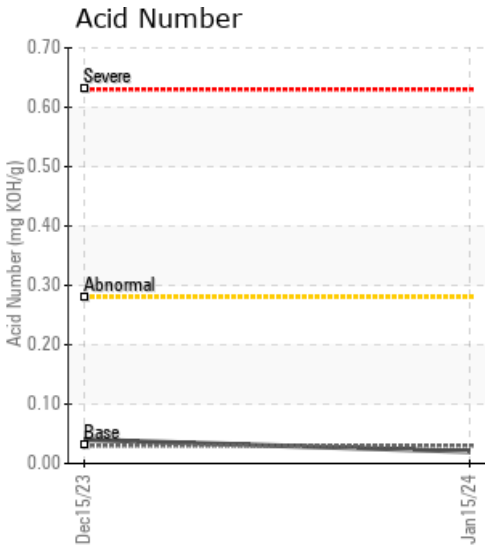
System Information
 System Volume: 25000 ltr
 Bulk Operating Temp: 572F / 300C
 Heating Source:
 Blanket:
 Fluid: PETRO CANADA CALFLO AF
 Make: TDE

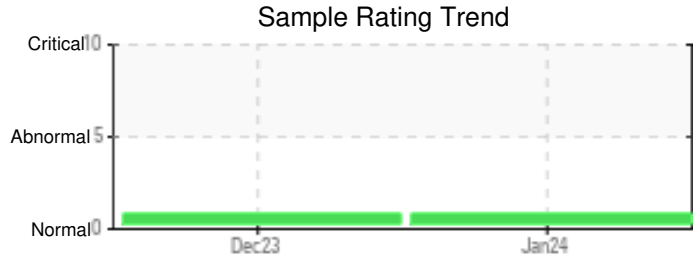
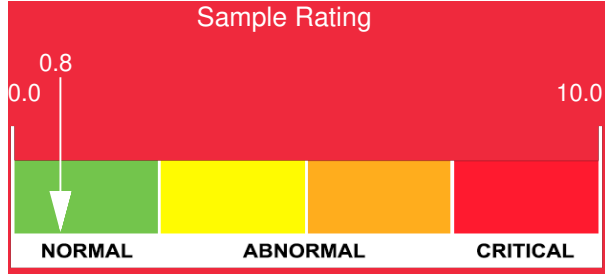
Sample Information
 Lab No: 02619089
 Analyst: Lyle Dach
 Sample Date: 01/15/24
 Received Date: 02/29/24
 Completed: 03/04/24
 Lyle Dach
 lyle.dach@HFSinclair.com

Recommendation: Results appear to be within specification, 90% GCD is slightly higher than reference. Viscosity has dropped slightly, if there is high pressure blanket gas it can become entrained in the fluid and reduce the viscosity. Blanket gas pressure is recommended to be in the 2-3 PSI range.

Comments: (GCD) 90% Distillation Point is abnormally high.

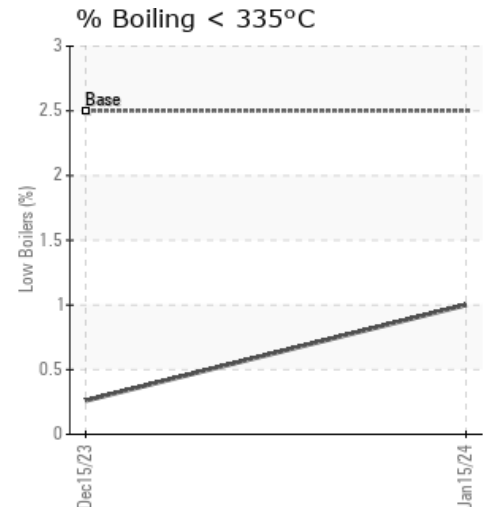
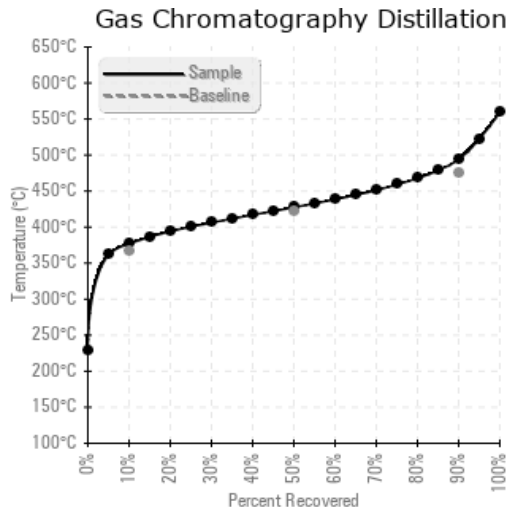
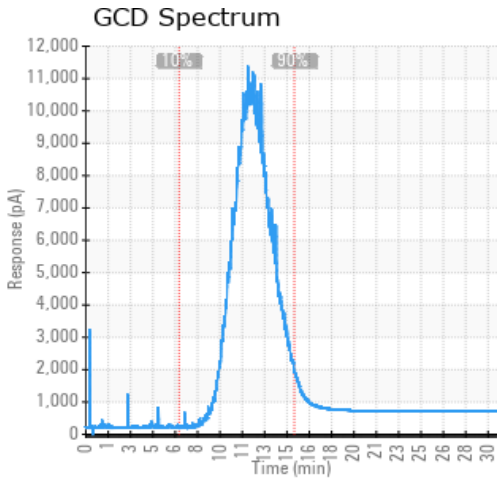
Sample Date	Received Date	Fluid Age	Sample Location	Flash Point (COC)	Water (KF)	Viscosity (40°C)	Acid Number	Solids	GCD 10%	GCD 50%	GCD 90%	GCD % < 335°C
	mm/dd/yy			°F/°C	ppm	cSt	mg/KOH/g	%wt	°F/°C	°F/°C	°F/°C	%
01/15/24	02/29/24	1.0m	sample point mid htr	450 / 232	24	29.8	0.02	0.021	710 / 377	801 / 427	921 / 494	1.00
12/15/23	02/29/24	0.0m	truck load line-new	475 / 246	14	32.3	0.04	0.017	712 / 378	800 / 427	918 / 492	0.26
Baseline Data				435 / 224		32.7	0.03		693 / 367	790 / 421	887 / 475	2.5





Sample Date	Iron	Chromium	Nickel	Aluminum	Copper	Lead	Tin	Cadmium	Silver	Vanadium	Silicon	Sodium	Potassium	Titanium	Molybdenum	Antimony	Manganese	Lithium	Boron	Magnesium	Calcium	Barium	Phosphorus	Zinc
01/15/24	0	0	0	0	0	0	0	0	0	0	0	0	0	0	0	0	0	0	0	0	0	0	30	0
12/15/23	0	0	0	0	0	0	0	0	0	0	4	0	0	0	0	0	0	0	0	0	0	0	281	0
Baseline Data			0	0						0		0	0					0					270	

Elemental analysis results (above) in parts per million (ppm). [10,000 ppm = 1.0%]



Historical Comments

12/15/23	Results appear to be within specification, 90% GCD is slightly higher than reference. (GCD) 90% Distillation Point is abnormally high.

Petro-Canada makes no representation or warranty of any kind, either express or implied, as to the accuracy or completeness of the analysis and assumes no responsibility and shall have no liability whatsoever with respect to such analysis, or a party's use of it. Petro-Canada is a division of HollyFrontier Corporation.