

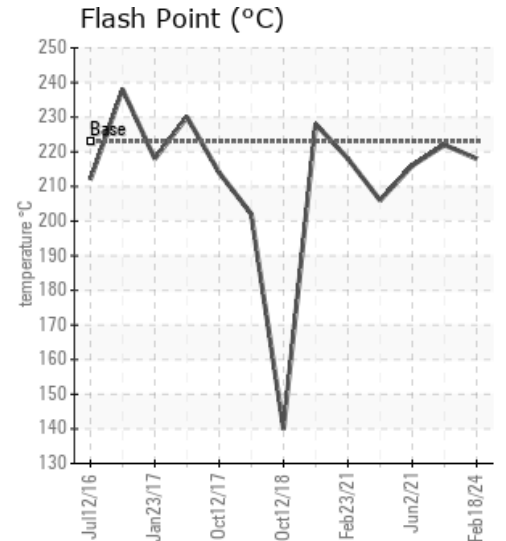
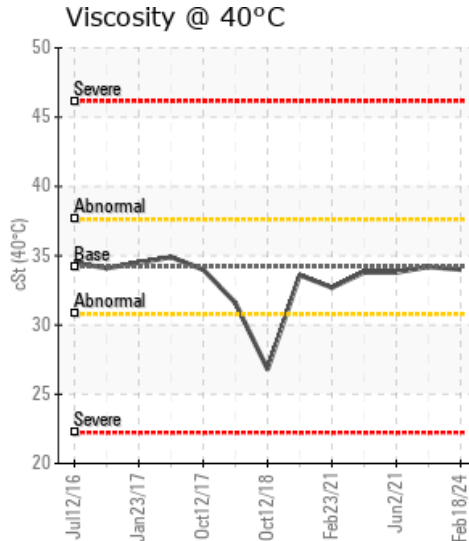
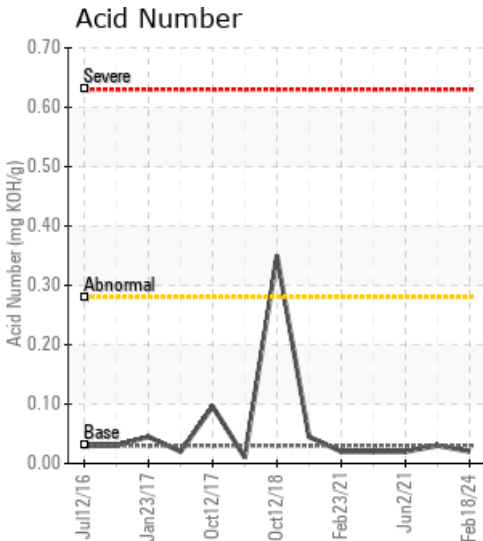
CONDYLINEHEATER

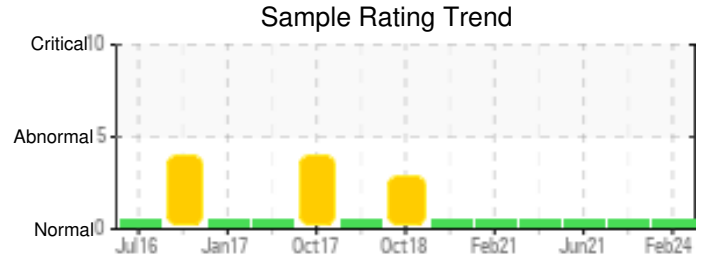
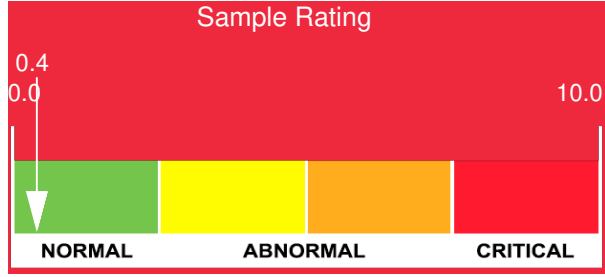
Customer: PTRHTF20191	System Information	Sample Information
STRATHCONA RESOURCES 06-08-62-03W6 PO BOX 25269 WAPITI CENTRE GRANDE PRAIRIE, AB T8W 0G2 CA Attn: Ken Irving Tel: (250)361-6180 E-Mail:	System Volume: 35000 ltr Bulk Operating Temp: 266F / 130C Heating Source: Blanket: Fluid: PETRO CANADA PETRO-THERM Make: RUSHTON	Lab No: 02622154 Analyst: Clinton Buhler Sample Date: 02/18/24 Received Date: 03/14/24 Completed: 03/18/24 Clinton Buhler Clinton.Buhler@HFSinclair.com

Recommendation: Sample results indicate the fluid is in suitable condition for continued service. Please re-sample in 12 months (please wait 12 months unless there is system upset or contamination).

Comments:

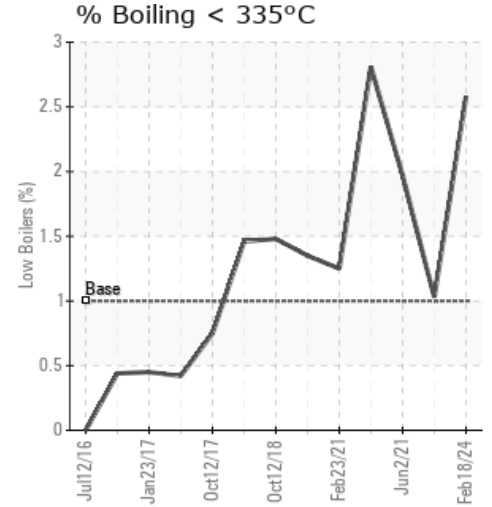
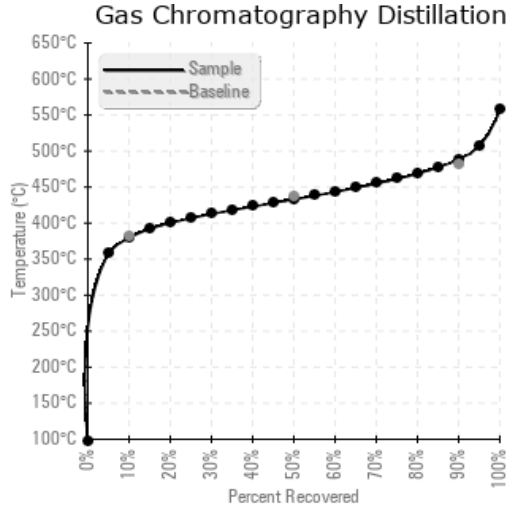
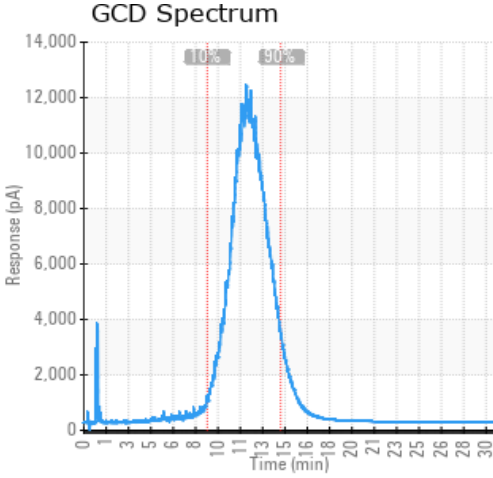
Sample Date	Received Date	Fluid Age	Sample Location	Flash Point (COC)	Water (KF)	Viscosity (40°C)	Acid Number	Solids	GCD 10%	GCD 50%	GCD 90%	GCD % < 335°C
	mm/dd/yy			°F/°C	ppm	cSt	mg/KOH/g	%wt	°F/°C	°F/°C	°F/°C	%
02/18/24	03/14/24	0.0m		424 / 218	14	34.0	0.02	0.036	715 / 379	811 / 433	911 / 489	2.58
08/21/23	09/05/23	0.0m		432 / 222	23.2	34.2	0.03	0.038	726 / 386	813 / 434	911 / 488	1.03
06/02/21	06/08/21	24.0m	discharge pump	421 / 216	15.6	33.8	0.02	0.042	712 / 378	798 / 426	904 / 485	1.97
05/23/21	06/08/21	24.0m	Condy line heater	403 / 206	17.1	33.8	0.02	0.062	709 / 376	804 / 429	897 / 481	2.81
02/23/21	03/05/21	24.0m	off pump	424 / 218	9.1	32.7	0.02	0.044	725 / 385	814 / 435	915 / 490	1.25
Baseline Data				433 / 223		34.2	0.03		720 / 382	817 / 436	900 / 482	1.00





Sample Date	Iron	Chromium	Nickel	Aluminum	Copper	Lead	Tin	Cadmium	Silver	Vanadium	Silicon	Sodium	Potassium	Titanium	Molybdenum	Antimony	Manganese	Lithium	Boron	Magnesium	Calcium	Barium	Phosphorus	Zinc
02/18/24	0	0	0	0	0	0	0	0	0	0	0	0	0	0	0	0	0	0	0	0	0	0	0	0
08/21/23	0	0	0	0	0	0	0	0	0	0	0	0	0	0	0	0	0	0	0	0	0	0	0	1
06/02/21	0	0	0	0	0	0	0	0	0	0	0	0	0	0	0	0	0	0	0	0	0	0	0	0
05/23/21	0	0	0	0	0	0	0	0	0	0	0	0	0	0	0	0	0	0	0	0	0	0	0	0
02/23/21	0	0	0	0	0	0	0	0	0	0	0	0	0	0	0	0	0	0	0	0	0	0	0	0
Baseline Data			0	0						0			0	0				0					0	

Elemental analysis results (above) in parts per million (ppm). [10,000 ppm = 1.0%]



Historical Comments

08/21/23	Sample results indicate the fluid is in suitable condition for continued service. Please re-sample in 12 months.
06/02/21	Sample results indicate that the fluid is in suitable condition for continued service. Please re-sample in 12 months.
05/23/21	Sample results indicate that the fluid is in suitable condition for continued service. Please re-sample in 12 months.
02/23/21	Sample results indicate that the fluid is in suitable condition for continued service. Please re-sample in 12 months.

Petro-Canada makes no representation or warranty of any kind, either express or implied, as to the accuracy or completeness of the analysis and assumes no responsibility and shall have no liability whatsoever with respect to such analysis, or a party's use of it. Petro-Canada is a division of HollyFrontier Corporation.