

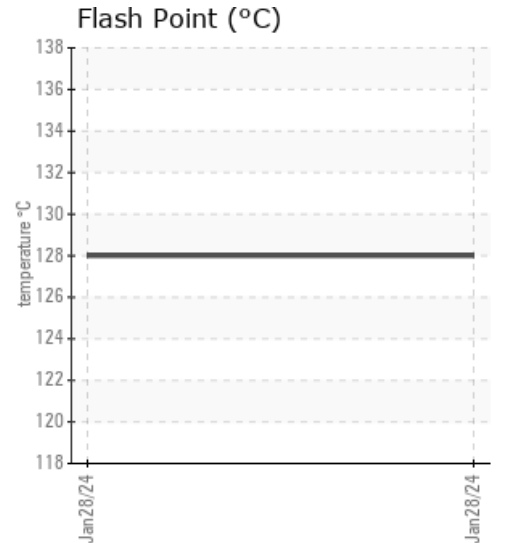
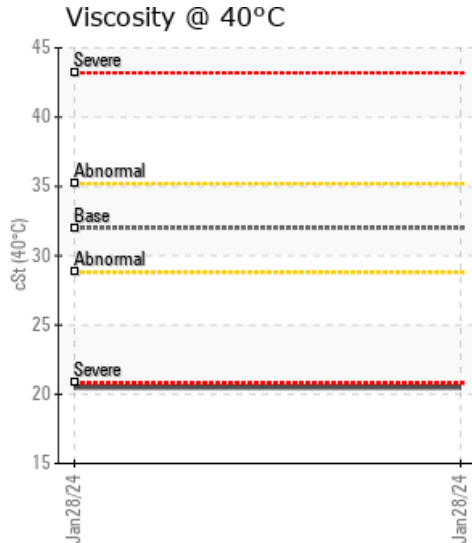
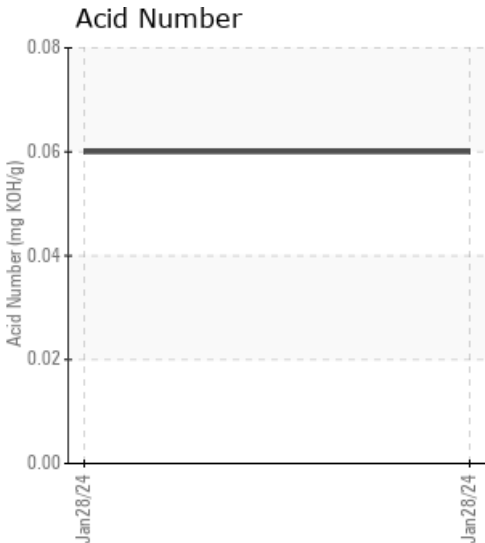
## B FOOD (THAILAND SAI 5)

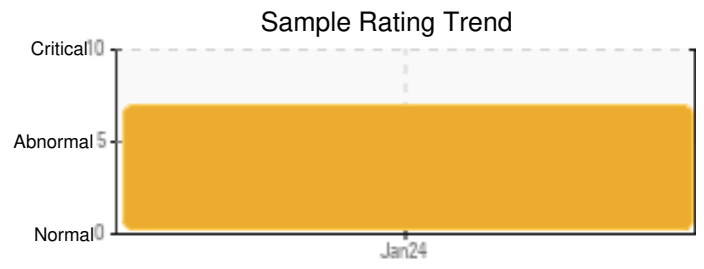
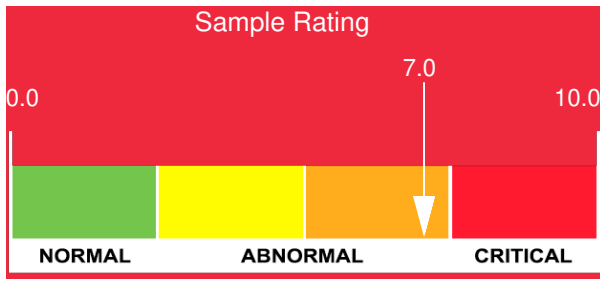
Customer: PTRHTF60010	System Information	Sample Information
SYNLUBE INTERNATIONAL CO LTD 76/1 MOO.7 THACHIN MUANG SAMUTSAKHON, 74000 TH Attn: Kittisak Suthithanakom Tel: 6(681)850-1907 E-Mail: kittisak@synlube.co.th	System Volume: 2600 ltr Bulk Operating Temp: 536F / 280C Heating Source: Blanket: Fluid: TOTAL NEVASTANE HTF Make: HOVEL	Lab No: 02625472 Analyst: Bill Quesnel CLS,OMA II,MLA-III,LLA-I Sample Date: 01/28/24 Received Date: 03/28/24 Completed: 04/08/24 Bill Quesnel CLS,OMA II,MLA-III,LLA-I

Recommendation: We recommend that you vent the expansion tank to remove low boilers which assists in restoring the flash point and viscosity of the fluid. Please review the operating temperatures and heating method to ensure that this fluid is not a safety concern due to the very low flashpoint. We recommend an early resample to monitor this condition.

Comments: COC Flash Point is severely low. Visc @ 40°C is severely low. (GCD) % < 335°C is marginally high. (GCD) 10% Distillation Point is marginally low.

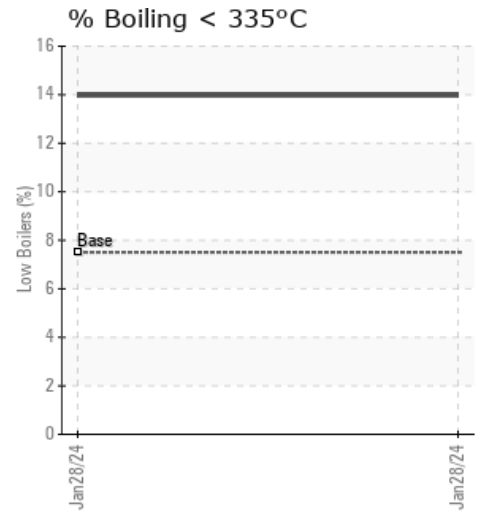
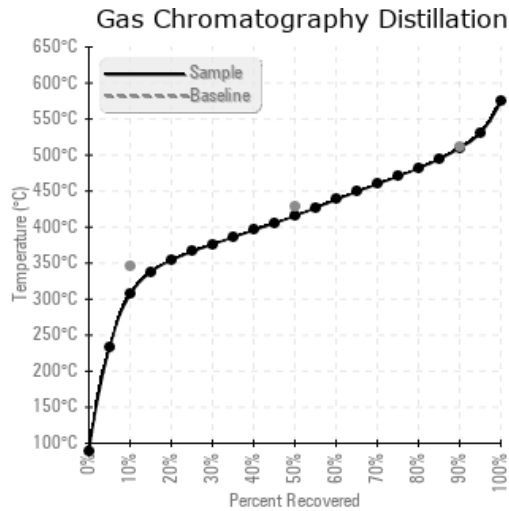
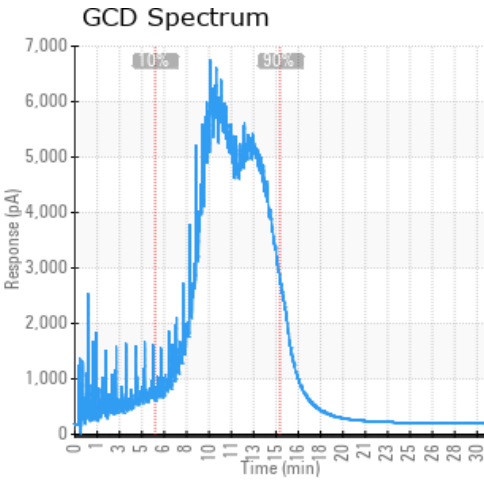
Sample Date	Received Date	Fluid Age	Sample Location	Flash Point (COC)	Water (KF)	Viscosity (40°C)	Acid Number	Solids	GCD 10%	GCD 50%	GCD 90%	GCD % < 335°C
	mm/dd/yy			°F/°C	ppm	cSt	mg/KOH/g	%wt	°F/°C	°F/°C	°F/°C	%
01/28/24	03/28/24	5.0y	SUPPLY & RETURN	262 / 128	12	20.5	0.06	0.035	583 / 306	780 / 416	949 / 510	13.97
Baseline Data				392 / 200		32			655 / 346	802 / 428	952 / 511	7.5





Sample Date	Iron	Chromium	Nickel	Aluminum	Copper	Lead	Tin	Cadmium	Silver	Vanadium	Silicon	Sodium	Potassium	Titanium	Molybdenum	Antimony	Manganese	Lithium	Boron	Magnesium	Calcium	Barium	Phosphorus	Zinc	
01/28/24	5	0	0	0	0	0	0	0	0	0	0	0	0	0	0	0	0	0	0	0	0	0	0	3	0
Baseline Data			0	0						0			0	0				0					0		

Elemental analysis results (above) in parts per million (ppm). [10,000 ppm = 1.0%]



### Historical Comments


Petro-Canada makes no representation or warranty of any kind, either express or implied, as to the accuracy or completeness of the analysis and assumes no responsibility and shall have no liability whatsoever with respect to such analysis, or a party's use of it. Petro-Canada is a division of HollyFrontier Corporation.