

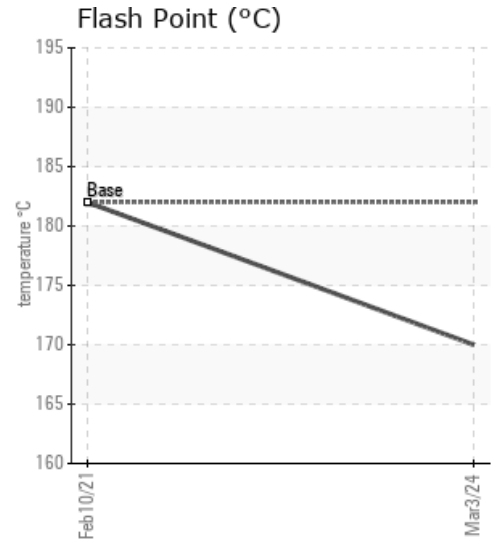
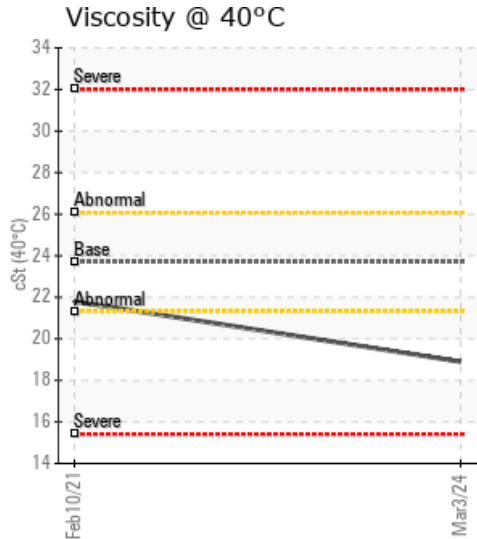
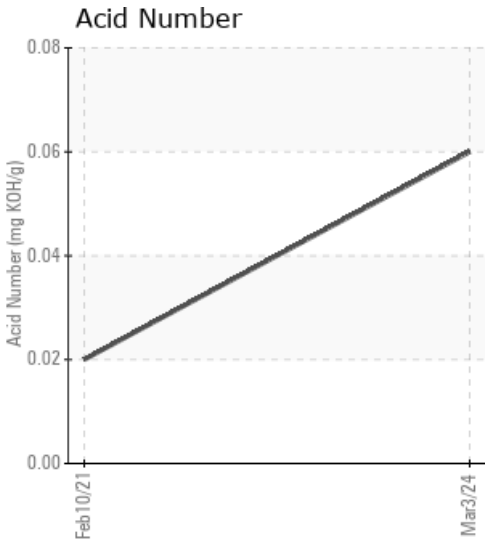
[THAILAND] CENTACO

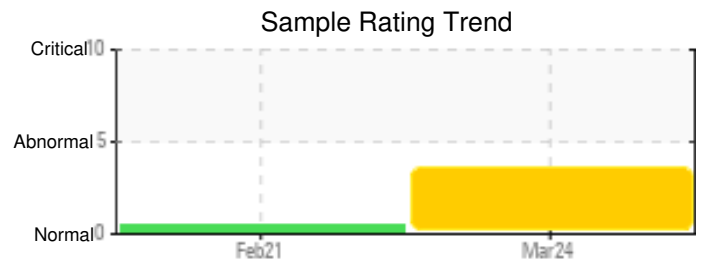
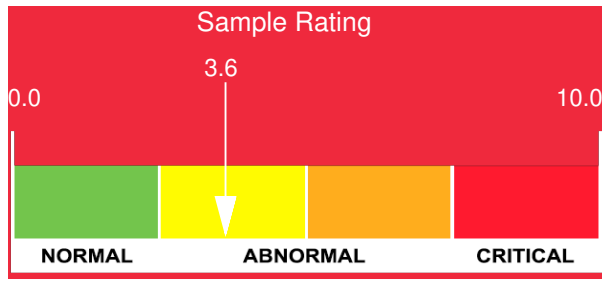
Customer: PTRHTF60010	System Information	Sample Information
SYNLUBE INTERNATIONAL CO LTD 76/1 MOO.7 THACHIN MUANG SAMUTSAKHON, 74000 TH Attn: Kittisak Suthithanakom Tel: 6(681)850-1907 E-Mail: kittisak@synlube.co.th	System Volume: 16000 ltr Bulk Operating Temp: 482F / 250C Heating Source: Blanket: Fluid: EASTMAN THERMINOL XP Make: WANSON	Lab No: 02625473 Analyst: Bill Quesnel CLS,OMA II,MLA-III,LLA-I Sample Date: 03/03/24 Received Date: 03/28/24 Completed: 04/08/24 Bill Quesnel CLS,OMA II,MLA-III,LLA-I

Recommendation: We recommend that you vent the expansion tank to remove low boilers which assists in restoring the viscosity of the fluid. Resample at the next service interval to monitor.

Comments: (GCD) 90% Distillation Point is severely high. Visc @ 40°C is abnormally low.

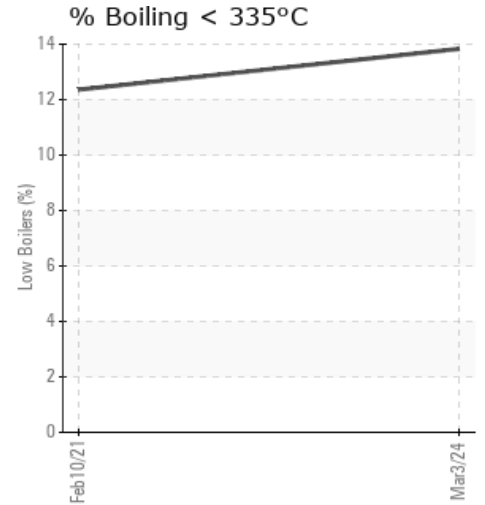
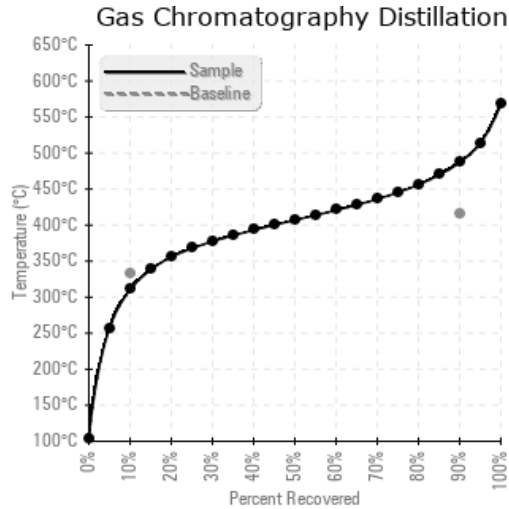
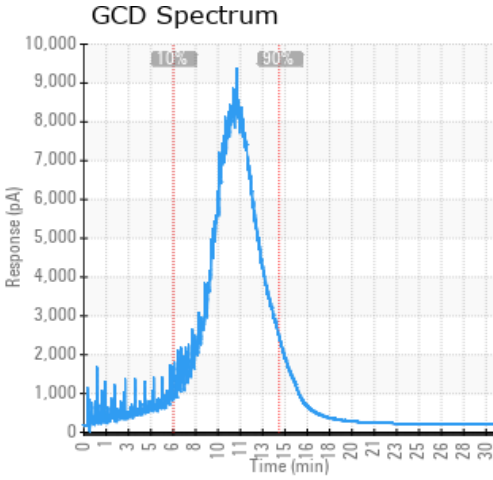
Sample Date	Received Date	Fluid Age	Sample Location	Flash Point (COC)	Water (KF)	Viscosity (40°C)	Acid Number	Solids	GCD 10%	GCD 50%	GCD 90%	GCD % < 335°C
	mm/dd/yy			°F/°C	ppm	cSt	mg/KOH/g	%wt	°F/°C	°F/°C	°F/°C	%
03/03/24	03/28/24	15.0y	SUPPLY & RETURN	338 / 170	10	18.9	0.06	0.036	591 / 310	765 / 407	908 / 487	13.83
02/10/21	02/26/21	12.0y		360 / 182	12.5	21.8	0.02	0.118	609 / 320	771 / 411	918 / 492	12.36
Baseline Data				360 / 182		23.7			630 / 332		781 / 416	





Sample Date	Iron	Chromium	Nickel	Aluminum	Copper	Lead	Tin	Cadmium	Silver	Vanadium	Silicon	Sodium	Potassium	Titanium	Molybdenum	Antimony	Manganese	Lithium	Boron	Magnesium	Calcium	Barium	Phosphorus	Zinc
03/03/24	0	0	0	0	0	0	0	0	0	0	0	0	0	0	0	0	0	0	0	0	0	0	0	0
02/10/21	2	0	0	0	0	0	0	0	0	0	0	0	0	0	0	0	0	0	1	0	0	0	0	0
Baseline Data			0	0						0			0	0					0				0	

Elemental analysis results (above) in parts per million (ppm). [10,000 ppm = 1.0%]



Historical Comments

02/10/21	Competitor Fluid. Cannot add comments with authority/knowledge on chemistry (GCD) 90% Distillation Point is severely high.

Petro-Canada makes no representation or warranty of any kind, either express or implied, as to the accuracy or completeness of the analysis and assumes no responsibility and shall have no liability whatsoever with respect to such analysis, or a party's use of it. Petro-Canada is a division of HollyFrontier Corporation.