

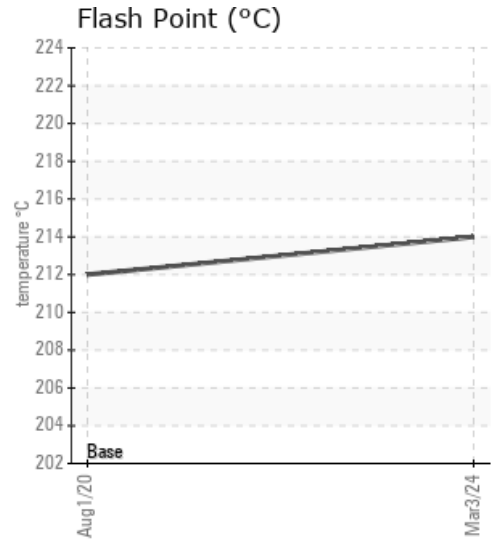
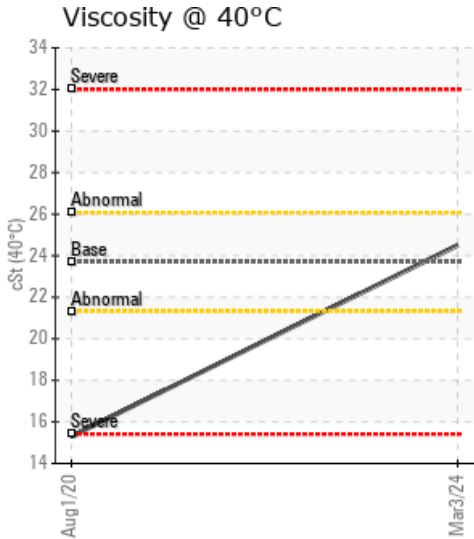
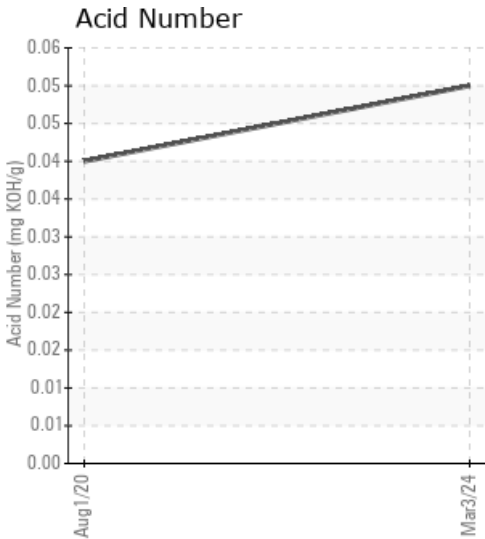
SURAPON SUPREME

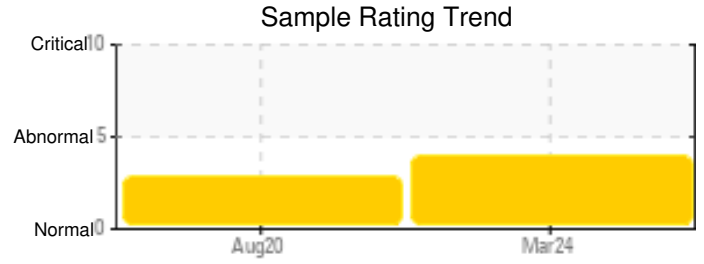
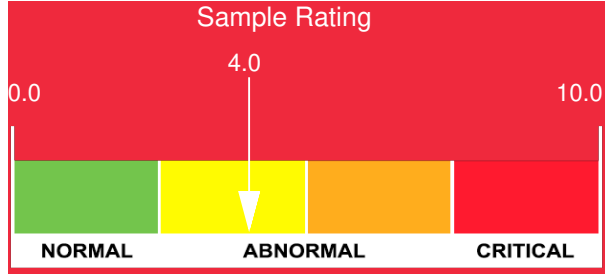
Customer: PTRHTF60010	System Information	Sample Information
SYNLUBE INTERNATIONAL CO LTD 76/1 MOO.7 THACHIN MUANG SAMUTSAKHON, 74000 TH Attn: Kittisak Suthithanakom Tel: 6(681)850-1907 E-Mail: kittisak@synlube.co.th	System Volume: 10000 ltr Bulk Operating Temp: 446F / 230C Heating Source: Blanket: Fluid: EASTMAN THERMINOL XP Make:	Lab No: 02625474 Analyst: Bill Quesnel CLS,OMA II,MLA-III,LLA-I Sample Date: 03/03/24 Received Date: 03/28/24 Completed: 04/08/24 Bill Quesnel CLS,OMA II,MLA-III,LLA-I

Recommendation: Despite the increase in the simdis 10% and 90% values, the fluid properties are acceptable for the time in service. Resample at the next service interval to monitor.

Comments: (GCD) 10% Distillation Point is severely high. (GCD) 90% Distillation Point is severely high.

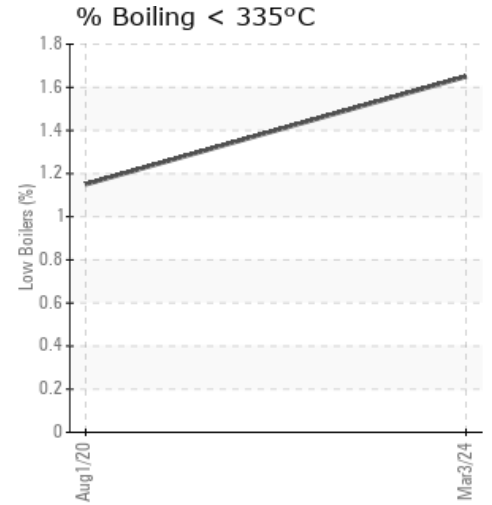
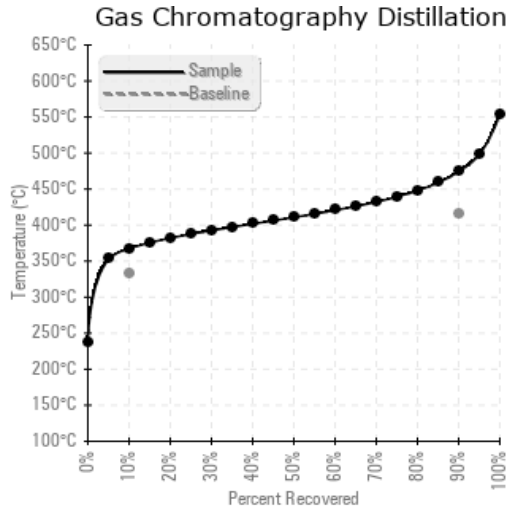
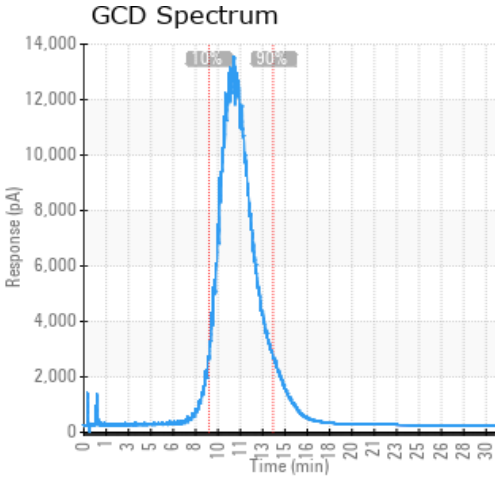
Sample Date	Received Date	Fluid Age	Sample Location	Flash Point (COC)	Water (KF)	Viscosity (40°C)	Acid Number	Solids	GCD 10%	GCD 50%	GCD 90%	GCD % < 335°C
	mm/dd/yy			°F/°C	ppm	cSt	mg/KOH/g	%wt	°F/°C	°F/°C	°F/°C	%
03/03/24	03/28/24	74.0m	SUPPLY & RETURN	417 / 214	15	24.5	0.05	0.069	693 / 367	772 / 411	886 / 474	1.65
08/01/20	08/25/20	36.0m		414 / 212	16.2	15.3	0.04	0.038	696 / 369	773 / 412	889 / 476	1.15
Baseline Data				360 / 182		23.7			630 / 332		781 / 416	





Sample Date	Iron	Chromium	Nickel	Aluminum	Copper	Lead	Tin	Cadmium	Silver	Vanadium	Silicon	Sodium	Potassium	Titanium	Molybdenum	Antimony	Manganese	Lithium	Boron	Magnesium	Calcium	Barium	Phosphorus	Zinc
03/03/24	0	0	0	0	0	0	0	0	0	0	0	0	0	0	0	0	0	0	0	0	0	0	0	0
08/01/20	0	0	0	0	0	0	0	0	0	0	0	0	0	0	0	0	0	0	0	0	0	0	0	0
Baseline Data			0	0						0			0	0					0				0	

Elemental analysis results (above) in parts per million (ppm). [10,000 ppm = 1.0%]



Historical Comments

08/01/20	This is not a PC product and cannot comment with accuracy on the data. (GCD) 90% Distillation Point is severely high. (GCD) 10% Distillation Point is marginally high.
----------	--

Petro-Canada makes no representation or warranty of any kind, either express or implied, as to the accuracy or completeness of the analysis and assumes no responsibility and shall have no liability whatsoever with respect to such analysis, or a party's use of it. Petro-Canada is a division of HollyFrontier Corporation.