

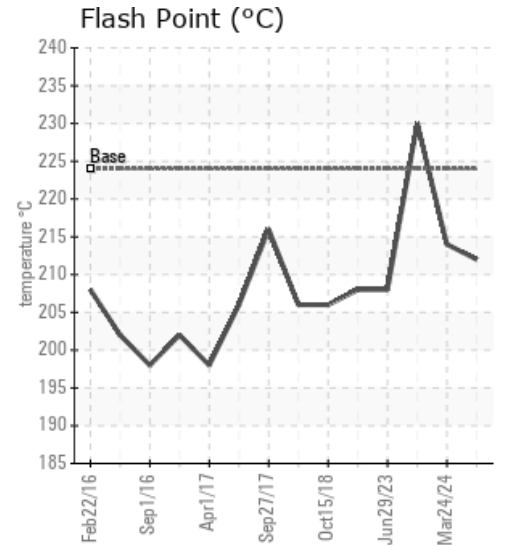
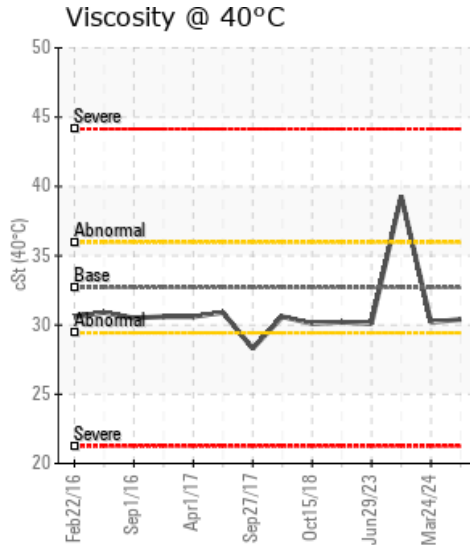
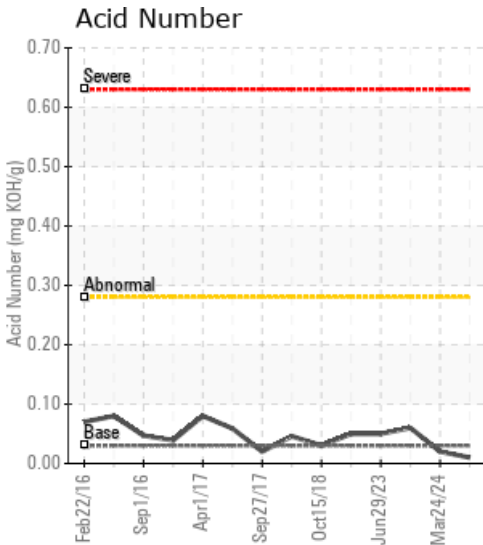
SILANE 3.0 DISTILLATION

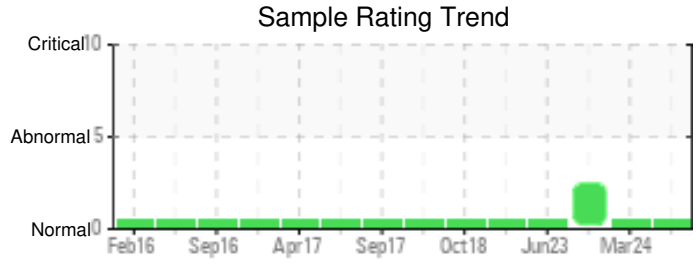
Customer: PTRHTF10093	System Information	Sample Information
REC GROUP 3322 ROAD N.N.E. MOSES LAKE, WA 98837 US Attn: Chris Fuller Tel: (509)793-0723 E-Mail: chris.fuller@recsilicon.com	System Volume: 700 gal Bulk Operating Temp: 300F / 149C Heating Source: Blanket: Fluid: PETRO CANADA CALFLO AF Make: CCI	Lab No: 02626262 Analyst: Ron LeBlanc Sample Date: 03/25/24 Received Date: 04/02/24 Completed: 04/23/24 Ron LeBlanc Ronald.LeBlancSr@HFSinclair.com

Recommendation: The phosphorus level is depleted to 21ppm. New typical is 270 ppm. The oil was evaluated by R&D last year and found to be depleted in all antioxidants. The recommendation was to change the oil.

Comments:

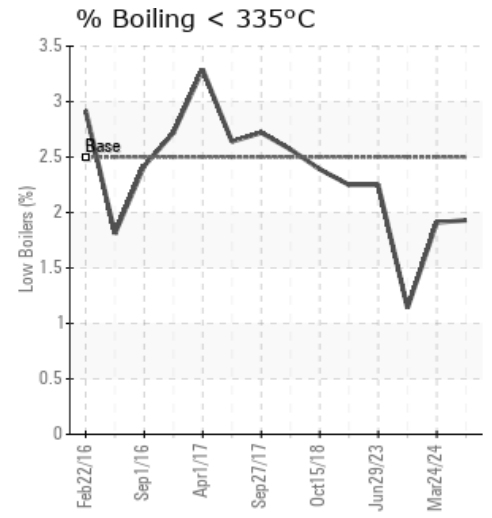
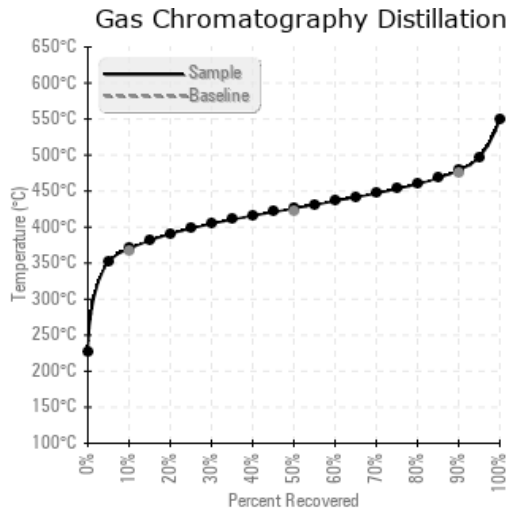
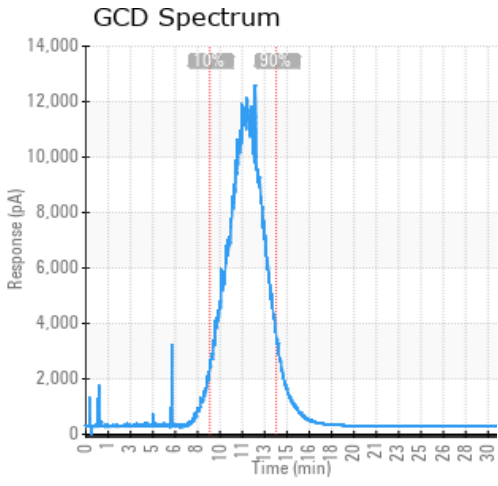
Sample Date	Received Date	Fluid Age	Sample Location	Flash Point (COC)	Water (KF)	Viscosity (40°C)	Acid Number	Solids	GCD 10%	GCD 50%	GCD 90%	GCD % < 335°C
	mm/dd/yy			°F/°C	ppm	cSt	mg/KOH/g	%wt	°F/°C	°F/°C	°F/°C	%
03/25/24	04/02/24	180.0m		414 / 212	9	30.4	0.01	0.042	697 / 370	799 / 426	894 / 479	1.93
03/24/24	04/02/24	180.0m		417 / 214	6	30.2	0.02	0.037	698 / 370	799 / 426	894 / 479	1.91
07/15/23	07/20/23	171.0m	mole sieve preheater	446 / 230	4.5	39.3	0.06	0.044	714 / 379	816 / 436	936 / 502	1.14
06/29/23	07/05/23	0.0m	expansion tank	406 / 208	6.6	30.2	0.05	0.041	697 / 370	800 / 427	895 / 480	2.25
06/29/23	07/05/23	171.0m	expansion tank	406 / 208	6.0	30.1	0.05	0.046	696 / 369	799 / 426	895 / 479	2.25
Baseline Data				435 / 224		32.7	0.03		693 / 367	790 / 421	887 / 475	2.5





Sample Date	Iron	Chromium	Nickel	Aluminum	Copper	Lead	Tin	Cadmium	Silver	Vanadium	Silicon	Sodium	Potassium	Titanium	Molybdenum	Antimony	Manganese	Lithium	Boron	Magnesium	Calcium	Barium	Phosphorus	Zinc
03/25/24	2	0	0	0	0	0	0	0	0	0	0	0	0	0	0	0	0	0	0	0	0	0	21	0
03/24/24	2	0	0	0	0	0	0	0	0	0	0	0	0	0	0	0	0	0	0	0	0	0	21	0
07/15/23	0	0	0	0	0	0	0	0	0	0	1	0	0	0	0	0	0	0	0	0	0	0	297	2
06/29/23	3	0	0	0	0	0	0	0	0	0	0	0	0	0	0	0	0	0	0	0	0	0	22	1
06/29/23	2	0	0	0	0	0	0	0	0	0	0	0	0	0	0	0	0	0	0	0	0	0	22	1
Baseline Data																							270	

Elemental analysis results (above) in parts per million (ppm). [10,000 ppm = 1.0%]



Historical Comments	
03/24/24	The sample shows phosphorus depleted to 21 ppm. the new typical is 270 ppm. This indicates the antioxidant packages can be depleted below acceptable operating ranges. When R&D broke down 3.0 last year it was found the antioxidant packages were depleted and suggested the oil be changed to obtain mamximum heat transfer qualities.
07/15/23	The viscosity is abnormally high. The GCD 90% Distillation point is severely high indicating increase in viscosity. Pentane insolubles is elevated compared to previous sample. Sludge may be forming causing 90% Distillation Point to increase. Consider taking another sample. Purge plenty of oil before taking sample. Make sure oil is hot when pulling the sample. (GCD) 90% Distillation Point is severely high. Visc @ 40°C is abnormally high.
06/29/23	Sample looks excellent. Resample at normal interval.
06/29/23	Sample looks excellent. Resample at next normal interval.

Petro-Canada makes no representation or warranty of any kind, either express or implied, as to the accuracy or completeness of the analysis and assumes no responsibility and shall have no liability whatsoever with respect to such analysis, or a party's use of it. Petro-Canada is a division of HollyFrontier Corporation.