

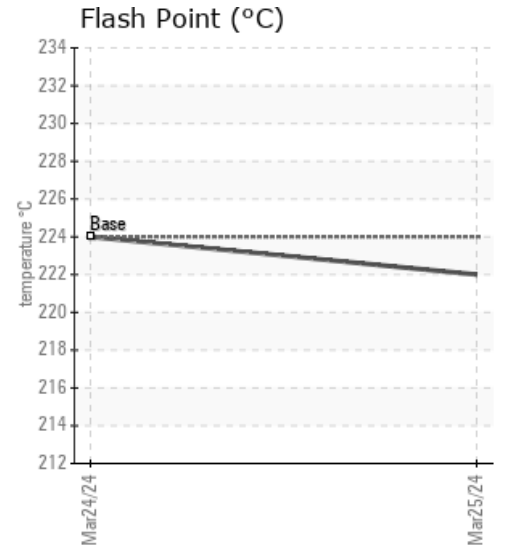
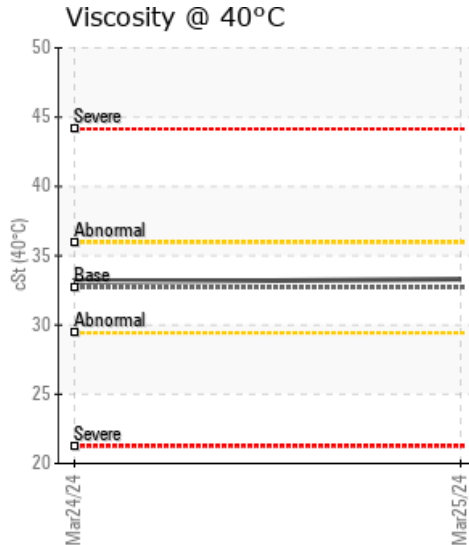
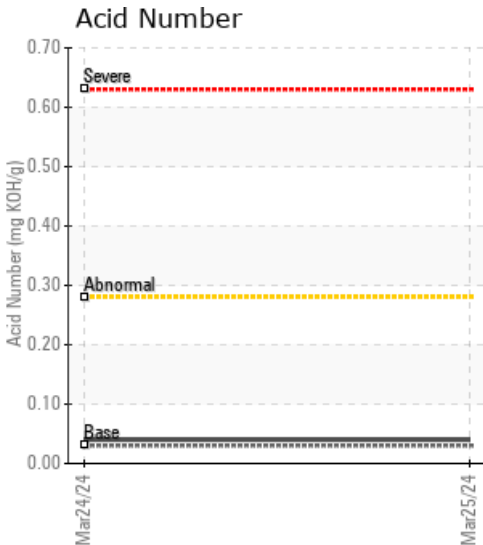
## SILANE 4.0 mole sieve preheater

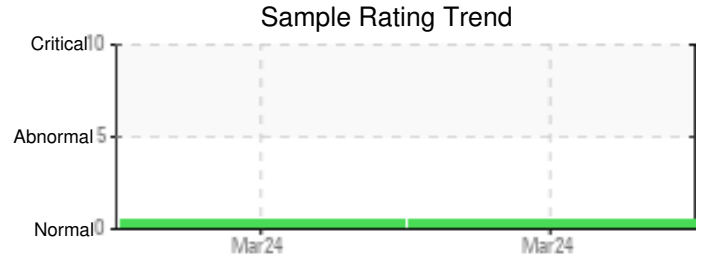
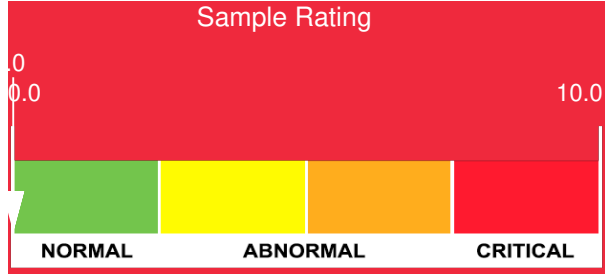
Customer: PTRHTF10093	System Information	Sample Information
REC GROUP 3322 ROAD N N.E. MOSES LAKE, WA 98837 US Attn: Chris Fuller Tel: (509)793-0723 E-Mail: chris.fuller@recsilicon.com	System Volume: 700 gal Bulk Operating Temp: 300F / 149C Heating Source: Blanket: Fluid: PETRO CANADA CALFLO AF Make: COEN	Lab No: 02626266 Analyst: Ron LeBlanc Sample Date: 03/25/24 Received Date: 04/02/24 Completed: 04/11/24 Ron LeBlanc Ronald.LeBlancSr@HFSinclair.com

Recommendation: By all appearances the oil looks in specification. R&D is evaluating if all the oxidation additives are in the oil.

Comments:

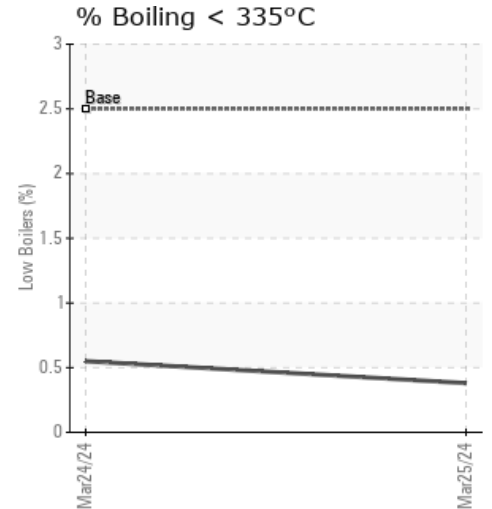
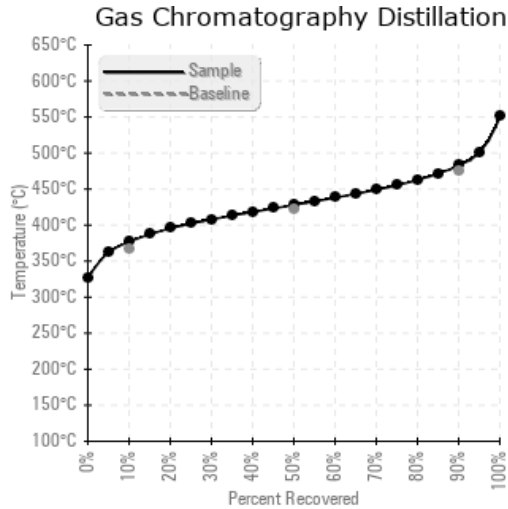
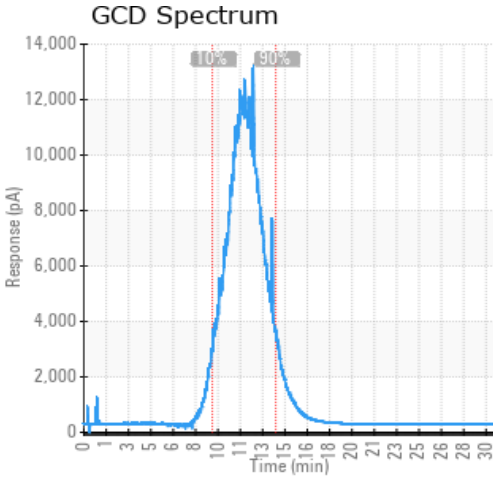
Sample Date	Received Date	Fluid Age	Sample Location	Flash Point (COC)	Water (KF)	Viscosity (40°C)	Acid Number	Solids	GCD 10%	GCD 50%	GCD 90%	GCD % < 335°C
	mm/dd/yy			°F/°C	ppm	cSt	mg/KOH/g	%wt	°F/°C	°F/°C	°F/°C	%
03/25/24	04/02/24	180.0m		432 / 222	0	33.3	0.04	0.046	710 / 377	802 / 428	901 / 483	0.38
03/24/24	04/02/24	180.0m		435 / 224	0	33.1	0.04	0.039	709 / 376	802 / 428	901 / 483	0.55
Baseline Data				435 / 224		32.7	0.03		693 / 367	790 / 421	887 / 475	2.5





Sample Date	Iron	Chromium	Nickel	Aluminum	Copper	Lead	Tin	Cadmium	Silver	Vanadium	Silicon	Sodium	Potassium	Titanium	Molybdenum	Antimony	Manganese	Lithium	Boron	Magnesium	Calcium	Barium	Phosphorus	Zinc
03/25/24	0	0	0	0	0	0	0	0	0	0	3	0	0	0	0	0	0	0	0	0	0	0	291	1
03/24/24	0	0	0	0	0	0	0	0	0	0	3	0	0	0	0	0	0	0	0	0	0	0	291	1
<b>Baseline Data</b>			0	0						0			0	0					0				270	

Elemental analysis results (above) in parts per million (ppm). [10,000 ppm = 1.0%]



### Historical Comments

03/24/24	The oil appears to be in specification. R&D is determining if the oxidation inhibitors are still active in the oil.

Petro-Canada makes no representation or warranty of any kind, either express or implied, as to the accuracy or completeness of the analysis and assumes no responsibility and shall have no liability whatsoever with respect to such analysis, or a party's use of it. Petro-Canada is a division of HollyFrontier Corporation.