

[KEYERA BRAZEAU RIVER GAS PLANT / 3-12-46-14W5] PLANT 1

Customer: PTRHTF30084
 Keyera Partnership Brazeau River Ga...
 Box 7318
 Drayton Valley, AB T7A 1S5 CA
 Attn: Mike Sowada
 Tel: (780)805-0588
 E-Mail: mike_sowada@keyera.com

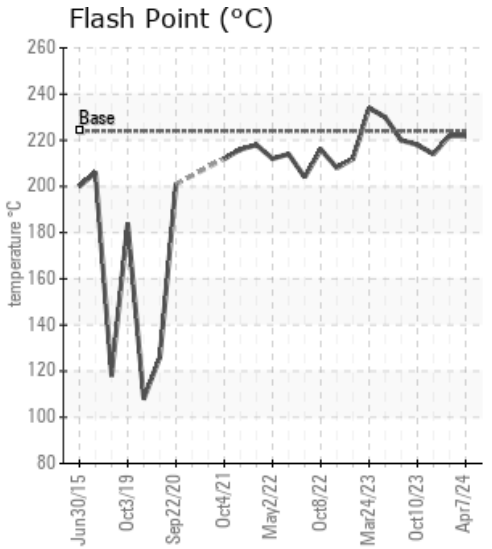
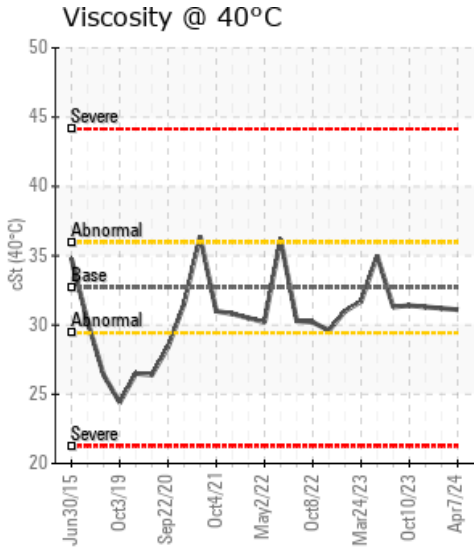
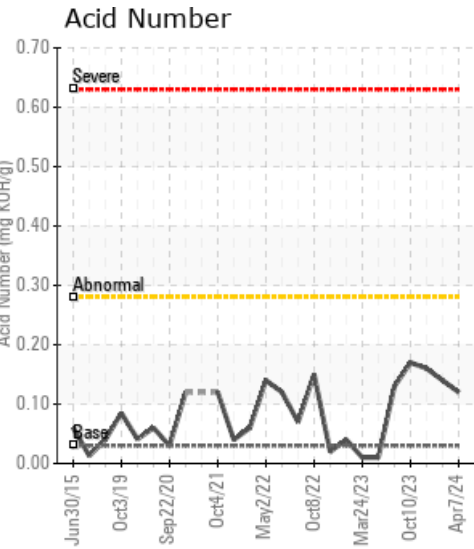
System Information
 System Volume: 14000 ltr
 Bulk Operating Temp: 446F / 230C
 Heating Source:
 Blanket:
 Fluid: PETRO CANADA CALFLO AF
 Make: IAP HEATER

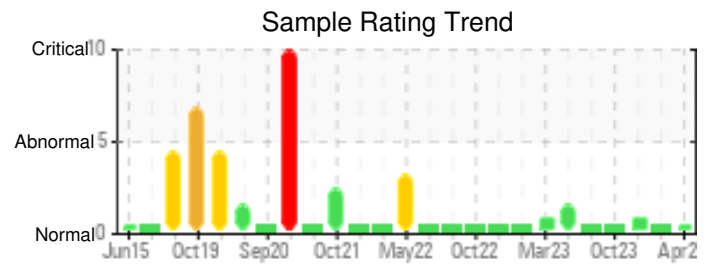
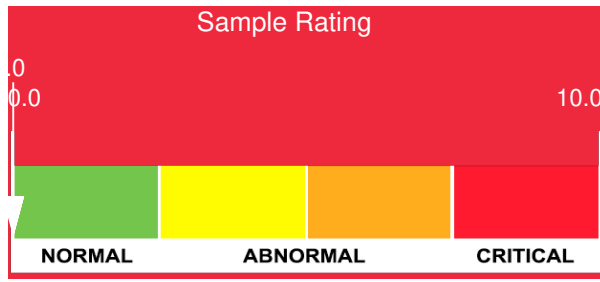
Sample Information
 Lab No: 02628036
 Analyst: Lyle Dach
 Sample Date: 04/07/24
 Received Date: 04/10/24
 Completed: 04/17/24
 Lyle Dach
 lyle.dach@HFSinclair.com

Recommendation: Sample results indicate that the fluid is in suitable condition for continued service. Resample in 12 months.

Comments:

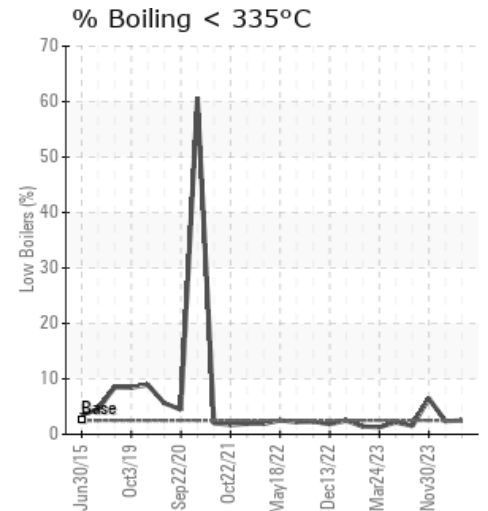
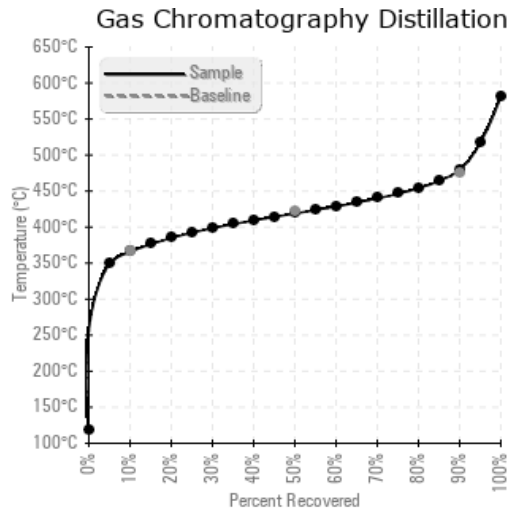
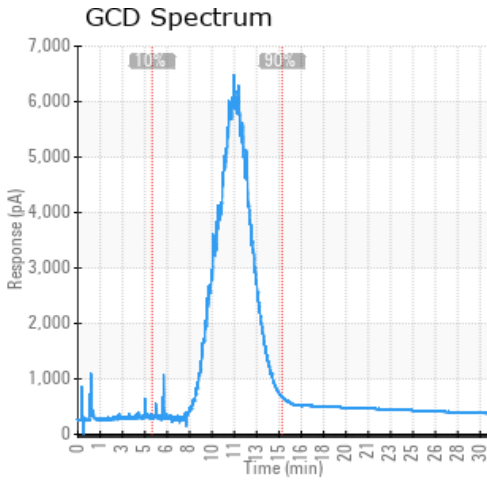
Sample Date	Received Date	Fluid Age	Sample Location	Flash Point (COC)	Water (KF)	Viscosity (40°C)	Acid Number	Solids	GCD 10%	GCD 50%	GCD 90%	GCD % < 335°C
	mm/dd/yy			°F/°C	ppm	cSt	mg/KOH/g	%wt	°F/°C	°F/°C	°F/°C	%
04/07/24	04/10/24	36.0m		432 / 222	25	31.1	0.12	0.053	690 / 366	786 / 419	895 / 479	2.50
02/03/24	02/13/24	36.0m		432 / 222	32	31.2	0.14	0.042	702 / 372	803 / 428	899 / 482	2.38
11/30/23	12/08/23	0.0m	HOH #1 pump	417 / 214	45	31.3	0.16	0.041	666 / 352	784 / 418	916 / 491	6.45
10/10/23	10/11/23	0.0m		424 / 218	22.1	31.4	0.17	0.136	706 / 374	805 / 429	901 / 483	1.50
07/10/23	07/19/23	24.0m	after main pump	428 / 220	29.5	31.3	0.13	0.052	703 / 373	803 / 428	898 / 481	2.18
Baseline Data				435 / 224		32.7	0.03		693 / 367	790 / 421	887 / 475	2.5





Sample Date	Iron	Chromium	Nickel	Aluminum	Copper	Lead	Tin	Cadmium	Silver	Vanadium	Silicon	Sodium	Potassium	Titanium	Molybdenum	Antimony	Manganese	Lithium	Boron	Magnesium	Calcium	Barium	Phosphorus	Zinc
04/07/24	0	0	0	0	0	0	0	0	0	0	0	0	0	0	0	0	0	0	2	0	0	0	41	0
02/03/24	0	0	0	0	0	0	0	0	0	0	0	0	0	0	0	0	0	0	2	0	0	0	42	0
11/30/23	0	0	0	0	0	0	0	0	0	0	0	0	0	0	0	0	0	0	2	0	0	0	45	0
10/10/23	0	0	0	0	0	0	0	0	0	0	0	0	0	0	0	0	0	0	3	0	0	0	48	0
07/10/23	1	0	0	0	0	0	0	0	0	0	0	0	0	0	0	0	0	0	3	0	0	0	55	1
Baseline Data			0	0						0			0	0					0				270	

Elemental analysis results (above) in parts per million (ppm). [10,000 ppm = 1.0%]



Historical Comments

02/03/24	Sample results indicate that the fluid is in suitable condition for continued service. Resample in 12 months.
11/30/23	Sample results indicate that the fluid is in suitable condition for continued service. 90% distillation point is slightly elevated, confirm blanket gas is functioning properly as fluid oxidizing could cause the increase. Resample in 12 months. (GCD) 90% Distillation Point is abnormally high.
10/10/23	Sample results indicate that the fluid is in suitable condition for continued service. Resample in 12 months.
07/10/23	Sample results indicate that the fluid is in suitable condition for continued service. Resample in 12 months. Sample color did get darker, looks similar to the March 4th sample.

Petro-Canada makes no representation or warranty of any kind, either express or implied, as to the accuracy or completeness of the analysis and assumes no responsibility and shall have no liability whatsoever with respect to such analysis, or a party's use of it. Petro-Canada is a division of HollyFrontier Corporation.