

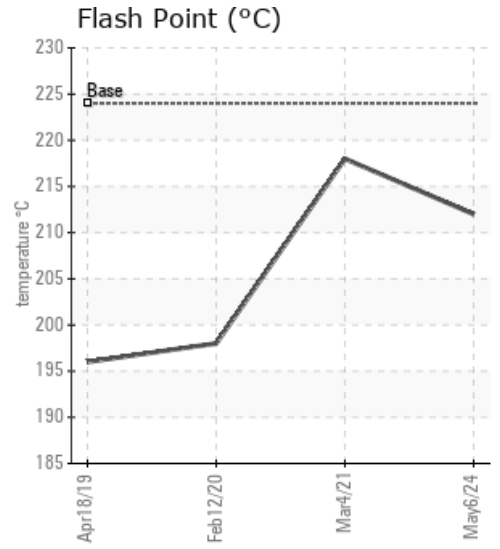
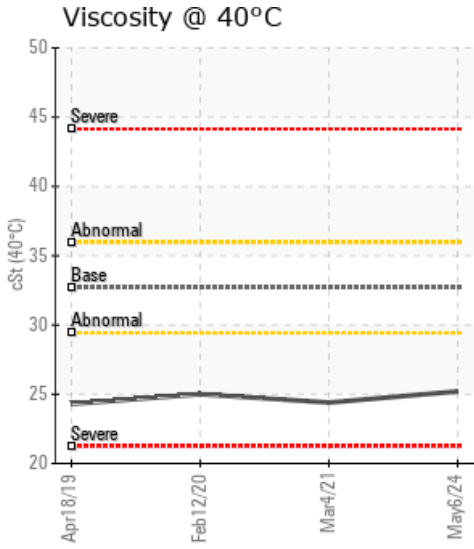
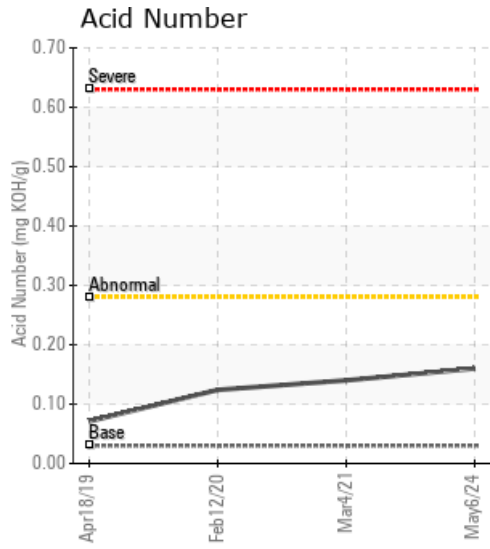
## LINE RF-02 SPINNERET

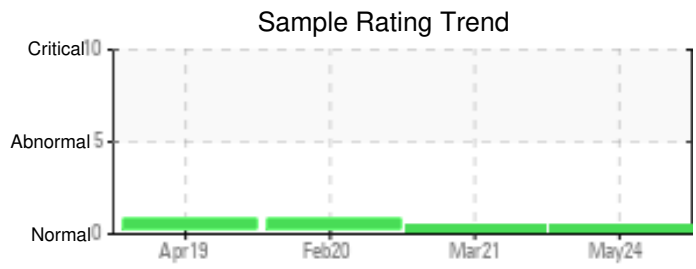
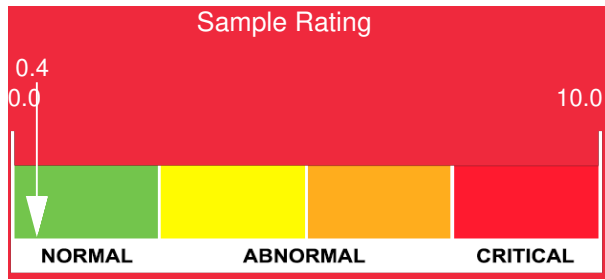
Customer: PTRHTF10057	System Information	Sample Information
PROPEX RINGGOLD PLANT 428 ROLLINS INDUSTRIAL BLVD RINGGOLD, GA 30736 US Attn: STEWART DOMAINGUE Tel: (423)553-3843 E-Mail: stewart.domaingue@propexglobal.com	System Volume: 300 gal Bulk Operating Temp: 440F / 227C Heating Source: Blanket: Fluid: PETRO CANADA CALFLO AF Make:	Lab No: 02635432 Analyst: Jake Finn Sample Date: 05/06/24 Received Date: 05/14/24 Completed: 05/28/24 Jake Finn jake.finn@HFSinclair.com

Recommendation: Viscosity is low, but has improved since the last sample. Fluid is suitable for continued use, please resample in 12 months for regular testing.

Comments: Visc @ 40°C is abnormally low.

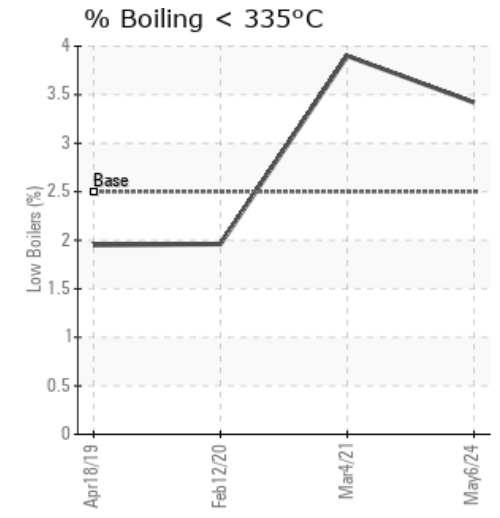
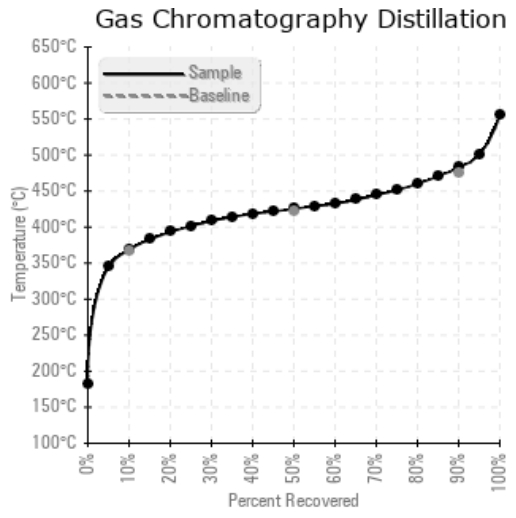
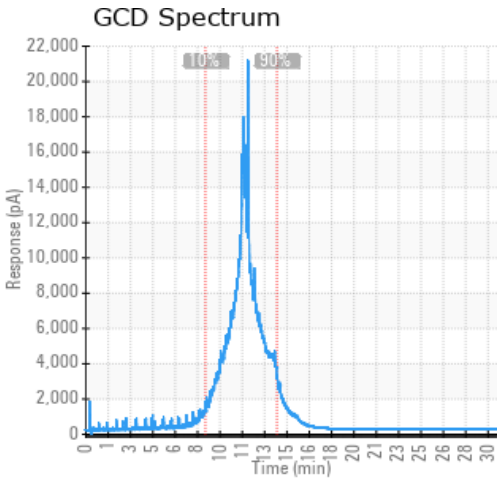
Sample Date	Received Date	Fluid Age	Sample Location	Flash Point (COC)	Water (KF)	Viscosity (40°C)	Acid Number	Solids	GCD 10%	GCD 50%	GCD 90%	GCD % < 335°C
	mm/dd/yy			°F/°C	ppm	cSt	mg/KOH/g	%wt	°F/°C	°F/°C	°F/°C	%
05/06/24	05/14/24	0.0h		414 / 212	56	25.2	0.16	0.074	696 / 369	798 / 425	901 / 483	3.42
03/04/21	03/16/21	0.0h		424 / 218	8.3	24.4	0.14	0.117	688 / 364	791 / 422	903 / 484	3.90
02/12/20	02/25/20	0.0h		388 / 198	12.6	25.0	0.124	0.104	705 / 374	816 / 435	915 / 491	1.96
04/18/19	05/14/19	0.0h		385 / 196	14.8	24.3	0.071	0.027	712 / 378	802 / 428	916 / 491	1.95
Baseline Data				435 / 224		32.7	0.03		693 / 367	790 / 421	887 / 475	2.5





Sample Date	Iron	Chromium	Nickel	Aluminum	Copper	Lead	Tin	Cadmium	Silver	Vanadium	Silicon	Sodium	Potassium	Titanium	Molybdenum	Antimony	Manganese	Lithium	Boron	Magnesium	Calcium	Barium	Phosphorus	Zinc
05/06/24	0	0	0	0	0	0	0	0	0	0	0	0	0	0	0	0	0	0	0	0	0	0	47	0
03/04/21	0	0	0	0	0	0	0	0	0	0	0	0	0	0	0	0	0	0	0	0	0	0	40	0
02/12/20	1	0	0	0	0	0	0	0	0	0	0	0	0	0	0	0	0	0	0	0	0	0	53	0
04/18/19	0	0	0	0	0	0	0	0	0	0	0	0	0	0	0	0	0	0	0	0	0	0	31	0
<b>Baseline Data</b>			0	0						0			0	0					0				270	

Elemental analysis results (above) in parts per million (ppm). [10,000 ppm = 1.0%]



Historical Comments	
03/04/21	This sample is in good condition, and is suitable for continued use. Please Resubmit a new sample for testing in one year.N/A
02/12/20	Venting the system may improve GCD 90% distillation point. Fluid is otherwise suitable for continued use. Please resubmit for testing in one year. (GCD) 90% Distillation Point is abnormally high. Very lite white metal and debris noted by lab.
04/18/19	Oil is suitable for continued use, please re-submit sample in 1 year. Changing any system filters or kidney-loop filtering the fluid during any shutdown periods will remove any 'light debris' as seen by the lab. Please remember to include hours of use on oil and age of hot oil system when submitting samples for testing.(GCD) 90% Distillation Point is abnormally high, indicating possible oxidative degradation. Light to Moderate debris is noted in lab comments. (GCD) 90% Distillation Point is

Petro-Canada makes no representation or warranty of any kind, either express or implied, as to the accuracy or completeness of the analysis and assumes no responsibility and shall have no liability whatsoever with respect to such analysis, or a party's use of it. Petro-Canada is a division of HollyFrontier Corporation.