

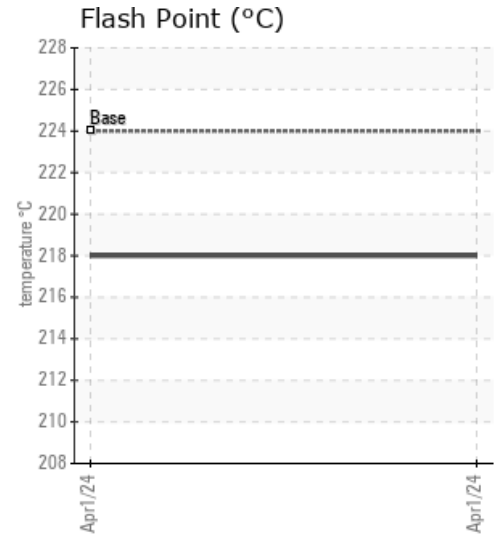
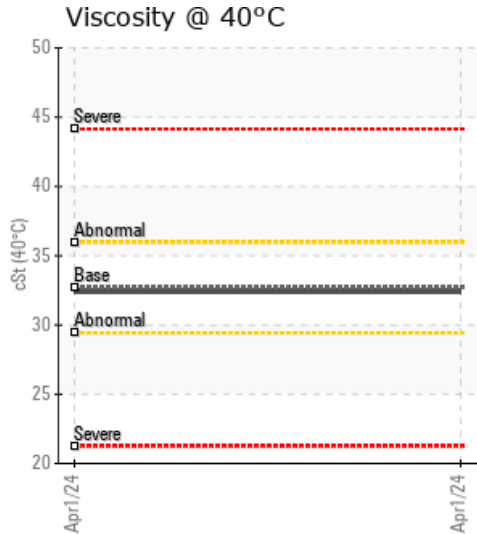
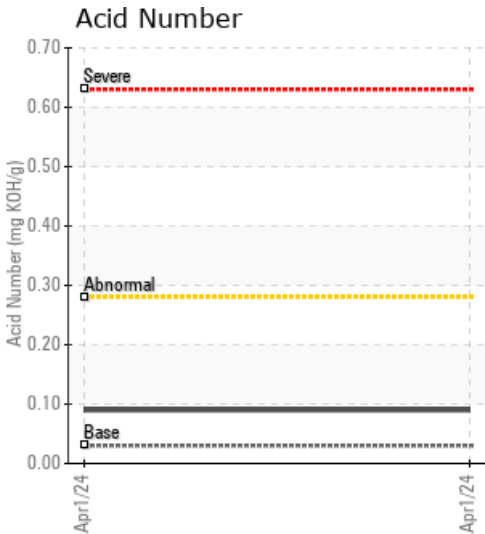
B05RVD19/PM05-13

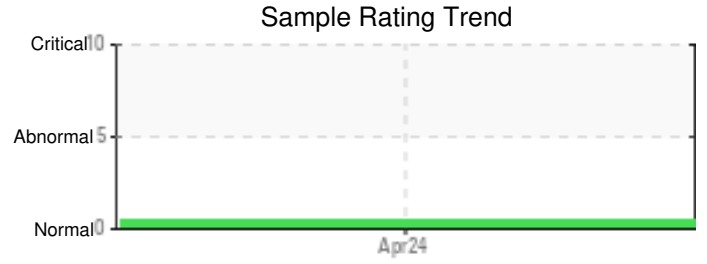
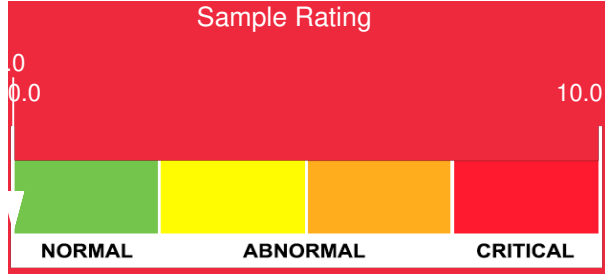
| Customer: PTRHTF10011 | System Information | Sample Information |
|--|---|---|
| G.F.S. CHEMICAL 851 Mckinley Avenue COLUMBUS, OH 43222 US Attn: Jamie Walters Tel: (800)446-4910 E-Mail: jamie@gfschemicals.com | System Volume: 250 gal Bulk Operating Temp: 350F / 177C Heating Source: Blanket: Fluid: PETRO CANADA CALFLO AF Make: GFS | Lab No: 02635899 Analyst: Joe Goecke Sample Date: 04/01/24 Received Date: 05/15/24 Completed: 05/17/24 Joe Goecke joe.goecke@HFSinclair.com |

Recommendation: System is in excellent condition. Will contact customer to discuss future sampling

Comments:

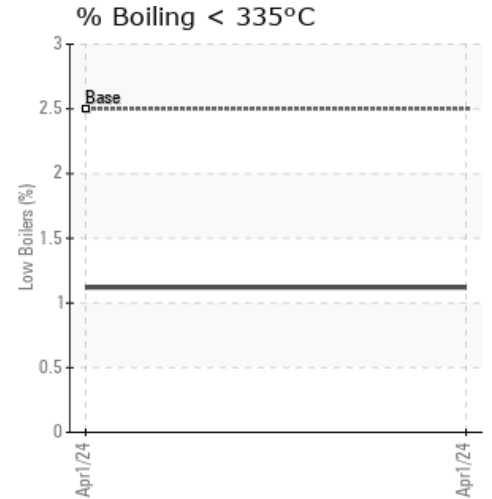
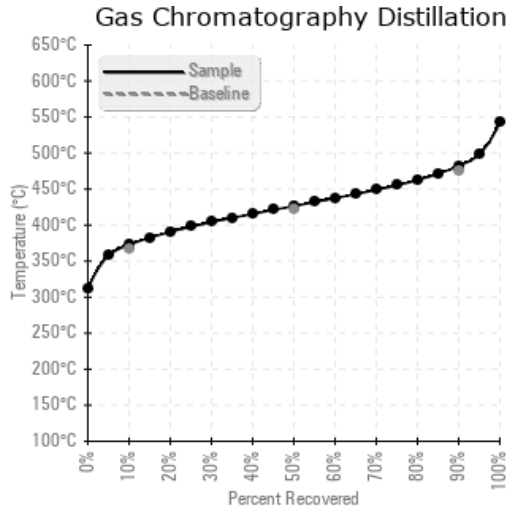
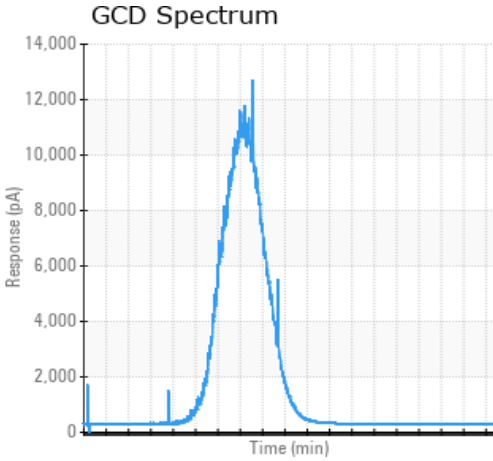
| Sample Date | Received Date | Fluid Age | Sample Location | Flash Point (COC) | Water (KF) | Viscosity (40°C) | Acid Number | Solids | GCD 10% | GCD 50% | GCD 90% | GCD % < 335°C |
|---------------|---------------|-----------|-----------------|-------------------|------------|------------------|-------------|--------|-----------|-----------|-----------|---------------|
| | mm/dd/yy | | | °F/°C | ppm | cSt | mg/KOH/g | %wt | °F/°C | °F/°C | °F/°C | % |
| 04/01/24 | 05/15/24 | 15.0y | | 424 / 218 | 12 | 32.4 | 0.09 | 0.049 | 703 / 373 | 800 / 427 | 900 / 482 | 1.12 |
| Baseline Data | | | | 435 / 224 | | 32.7 | 0.03 | | 693 / 367 | 790 / 421 | 887 / 475 | 2.5 |





| Sample Date | Iron | Chromium | Nickel | Aluminum | Copper | Lead | Tin | Cadmium | Silver | Vanadium | Silicon | Sodium | Potassium | Titanium | Molybdenum | Antimony | Manganese | Lithium | Boron | Magnesium | Calcium | Barium | Phosphorus | Zinc | |
|----------------------|------|----------|--------|----------|--------|------|-----|---------|--------|----------|---------|--------|-----------|----------|------------|----------|-----------|---------|-------|-----------|---------|--------|------------|------|---|
| 04/01/24 | 0 | 0 | 0 | 0 | 0 | 0 | 0 | 0 | 0 | 0 | 0 | 0 | 0 | 0 | 0 | 0 | 0 | 0 | 0 | 0 | 0 | 0 | 0 | 176 | 0 |
| Baseline Data | | | 0 | 0 | | | | | | 0 | | | 0 | 0 | | | | | 0 | | | | | 270 | |

Elemental analysis results (above) in parts per million (ppm). [10,000 ppm = 1.0%]



Historical Comments