

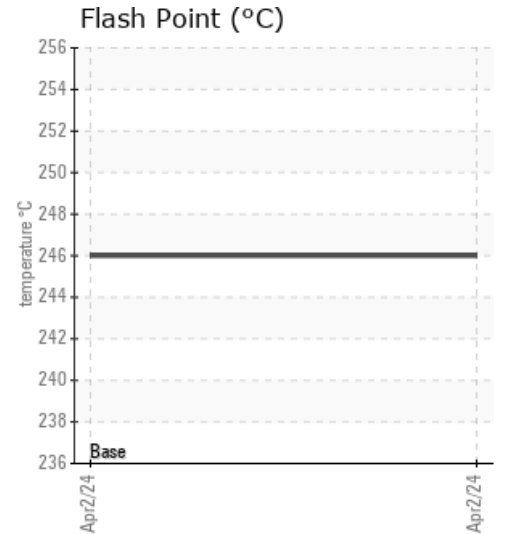
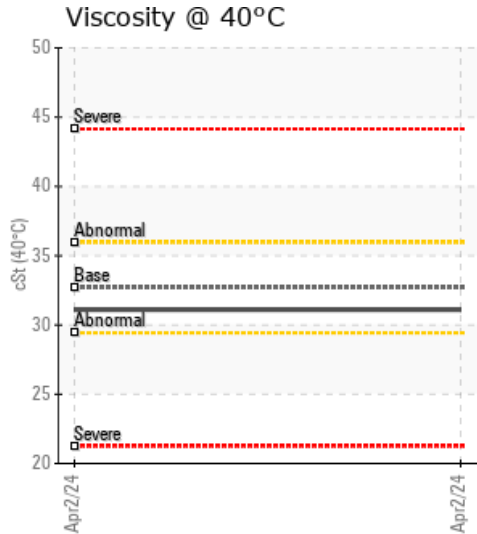
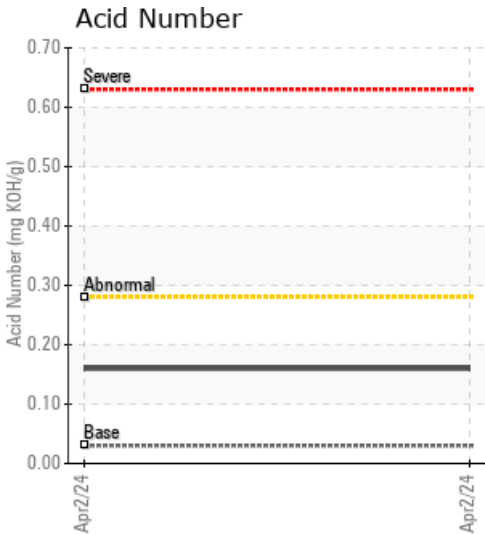
## B05RVD35/PM05-66

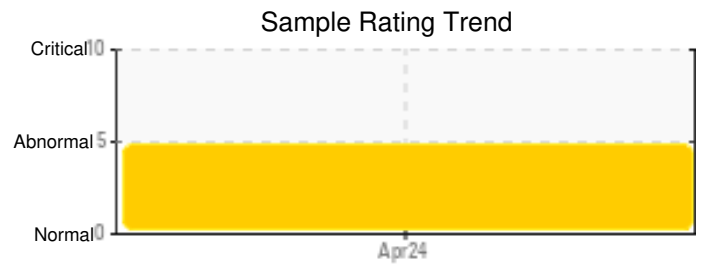
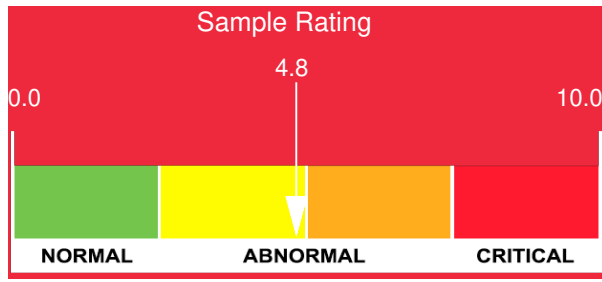
Customer: PTRHTF10011	System Information	Sample Information
G.F.S. CHEMICAL 851 Mckinley Avenue COLUMBUS, OH 43222 US Attn: Jamie Walters Tel: (800)446-4910 E-Mail: jamie@gfschemicals.com	System Volume: 20 gal Bulk Operating Temp: 350F / 177C Heating Source: Blanket: Fluid: PETRO CANADA CALFLO AF Make: INDUSTRIAL ENGINEERI	Lab No: 02635904 Analyst: Joe Goecke Sample Date: 04/02/24 Received Date: 05/15/24 Completed: 05/21/24 Joe Goecke joe.goecke@HFSinclair.com

Recommendation: Very high level of Silicon which is very unusual. This could have come from some sealant used in the system or other silicon containing contamination. Suggest you investigating source. All other parameters great. Will contact customer to discuss future testing.

Comments: Silicon ppm levels are severely high.

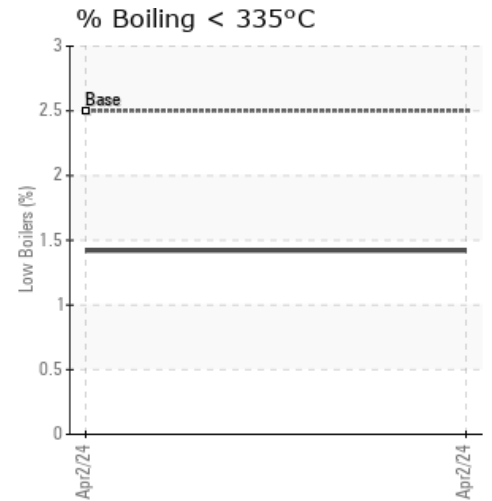
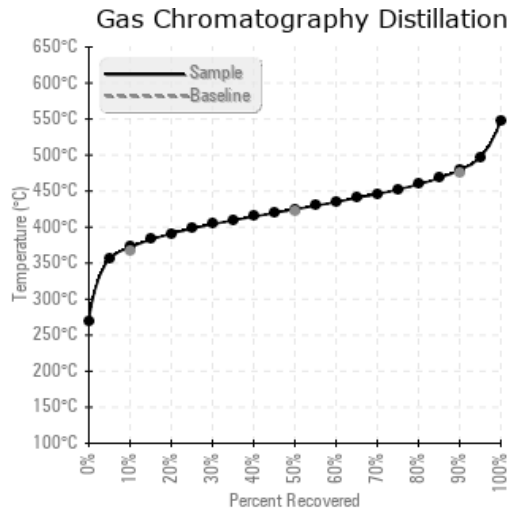
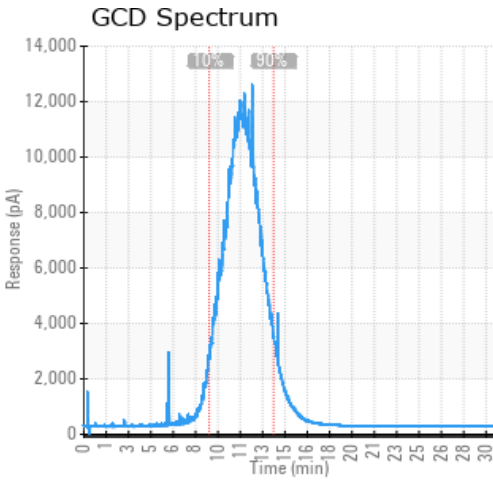
Sample Date	Received Date	Fluid Age	Sample Location	Flash Point (COC)	Water (KF)	Viscosity (40°C)	Acid Number	Solids	GCD 10%	GCD 50%	GCD 90%	GCD % < 335°C
	mm/dd/yy			°F/°C	ppm	cSt	mg/KOH/g	%wt	°F/°C	°F/°C	°F/°C	%
04/02/24	05/15/24	6.0y		475 / 246	13	31.1	0.16	0.051	701 / 372	796 / 425	895 / 479	1.42
Baseline Data				435 / 224		32.7	0.03		693 / 367	790 / 421	887 / 475	2.5





Sample Date	Iron	Chromium	Nickel	Aluminum	Copper	Lead	Tin	Cadmium	Silver	Vanadium	Silicon	Sodium	Potassium	Titanium	Molybdenum	Antimony	Manganese	Lithium	Boron	Magnesium	Calcium	Barium	Phosphorus	Zinc	
04/02/24	4	0	0	0	0	0	0	0	0	0	652	1	0	0	0	0	0	0	0	0	0	0	121	4	
Baseline Data			0	0						0			0	0					0					270	

Elemental analysis results (above) in parts per million (ppm). [10,000 ppm = 1.0%]



### Historical Comments