

## B05RVD42/PM0562

**Customer: PTRHTF10011**  
 G.F.S. CHEMICAL  
 851 Mckinley Avenue  
 COLUMBUS, OH 43222 US  
 Attn: Jamie Walters  
 Tel: (800)446-4910  
 E-Mail: jamie@gfschemicals.com

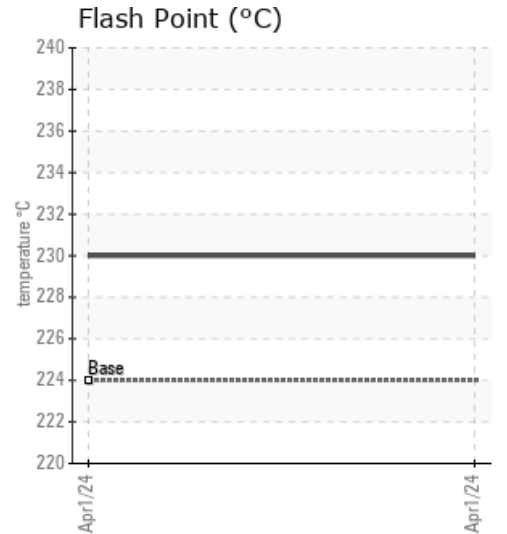
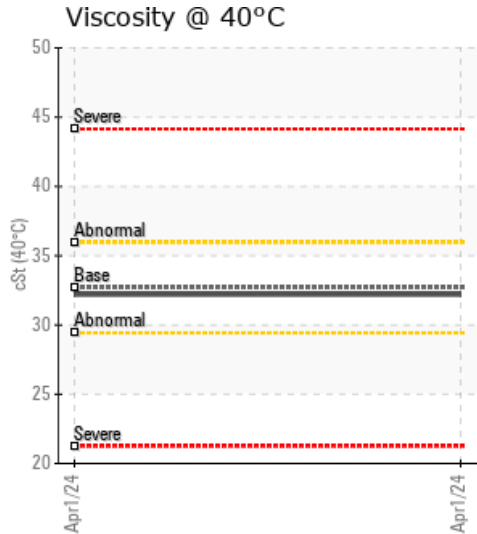
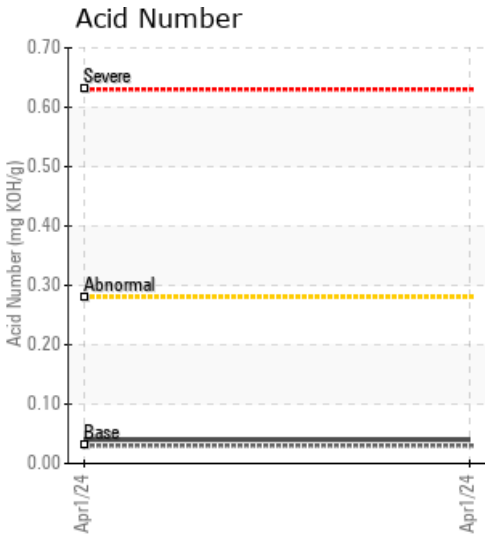
**System Information**  
 System Volume: 150 gal  
 Bulk Operating Temp: 350F / 177C  
 Heating Source:  
 Blanket:  
 Fluid: PETRO CANADA CALFLO AF  
 Make: CHROMALOX

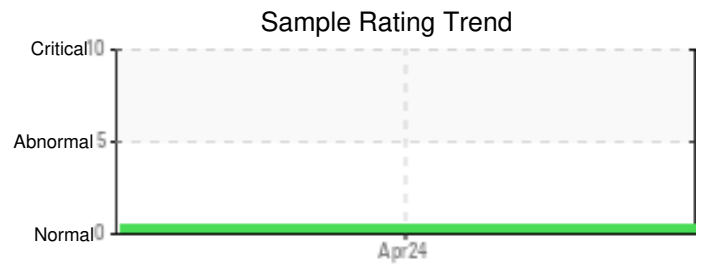
**Sample Information**  
 Lab No: 02635906  
 Analyst: Joe Goecke  
 Sample Date: 04/01/24  
 Received Date: 05/15/24  
 Completed: 05/21/24  
 Joe Goecke  
 Joe.goecke@HFSinclair.com

Recommendation: This system looks like a new fluid. All parameters are like new. I will schedule a meeting with the customer to discuss future oil analysis.

Comments:

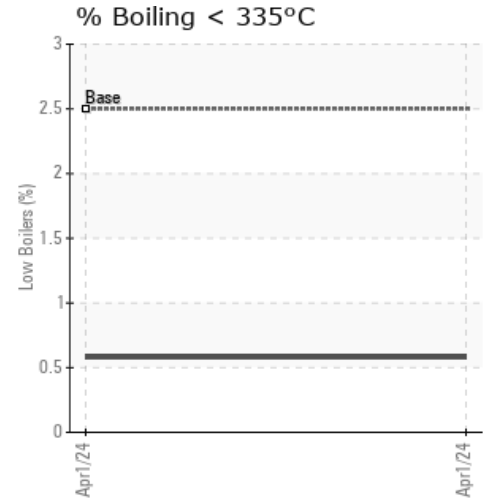
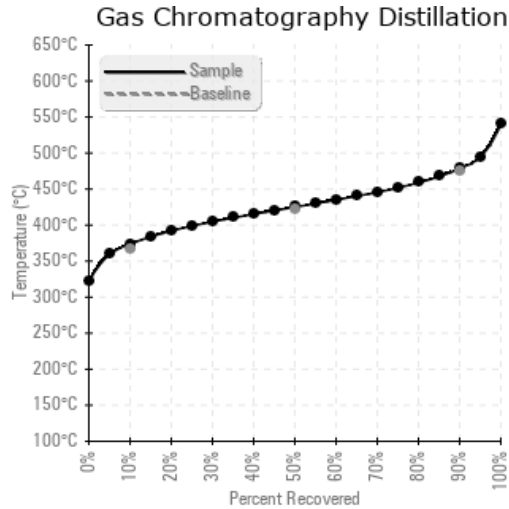
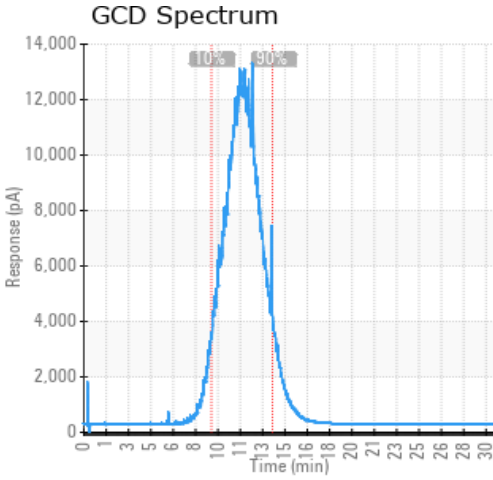
Sample Date	Received Date	Fluid Age	Sample Location	Flash Point (COC)	Water (KF)	Viscosity (40°C)	Acid Number	Solids	GCD 10%	GCD 50%	GCD 90%	GCD % < 335°C
	mm/dd/yy			°F/°C	ppm	cSt	mg/KOH/g	%wt	°F/°C	°F/°C	°F/°C	%
04/01/24	05/15/24	11.5y		446 / 230	6	32.2	0.04	0.076	705 / 374	797 / 425	893 / 479	0.58
Baseline Data				435 / 224		32.7	0.03		693 / 367	790 / 421	887 / 475	2.5





Sample Date	Iron	Chromium	Nickel	Aluminum	Copper	Lead	Tin	Cadmium	Silver	Vanadium	Silicon	Sodium	Potassium	Titanium	Molybdenum	Antimony	Manganese	Lithium	Boron	Magnesium	Calcium	Barium	Phosphorus	Zinc	
04/01/24	35	0	0	0	0	0	0	0	0	0	2	0	0	0	0	0	1	0	0	0	3	0	252	0	
<b>Baseline Data</b>			0	0						0			0	0				0						270	

Elemental analysis results (above) in parts per million (ppm). [10,000 ppm = 1.0%]



### Historical Comments


Petro-Canada makes no representation or warranty of any kind, either express or implied, as to the accuracy or completeness of the analysis and assumes no responsibility and shall have no liability whatsoever with respect to such analysis, or a party's use of it. Petro-Canada is a division of HollyFrontier Corporation.