

B05DO09/PM05-51

Customer: PTRHTF10011
 G.F.S. CHEMICAL
 851 Mckinley Avenue
 COLUMBUS, OH 43222 US
 Attn: Jamie Walters
 Tel: (800)446-4910
 E-Mail: jamie@gfschemicals.com

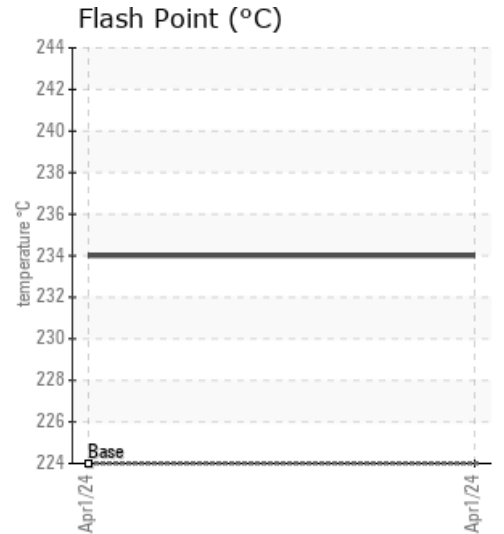
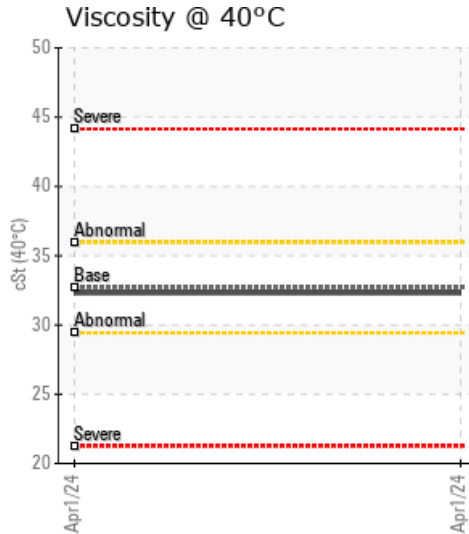
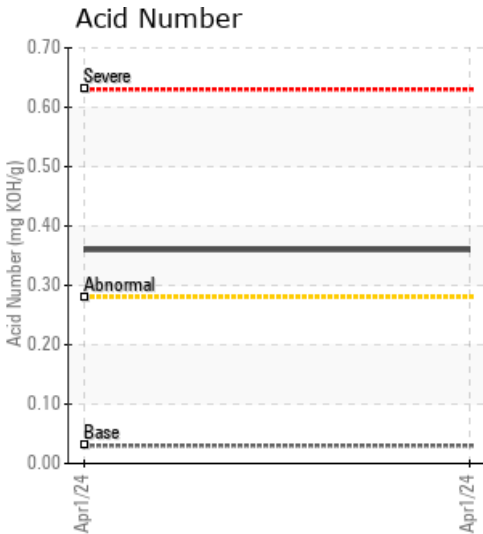
System Information
 System Volume: 50 gal
 Bulk Operating Temp: 350F / 177C
 Heating Source:
 Blanket:
 Fluid: PETRO CANADA CALFLO AF
 Make: CHROMALOX

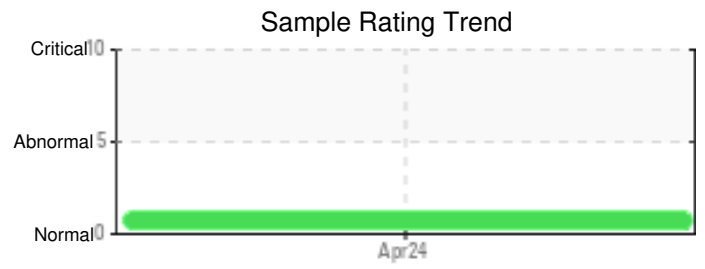
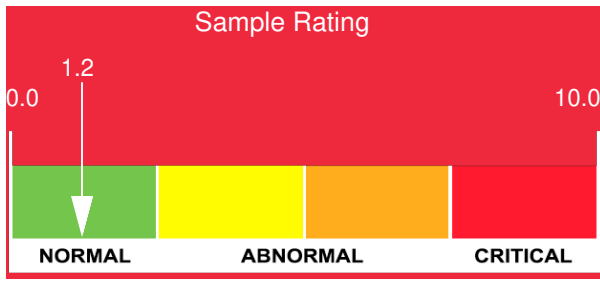
Sample Information
 Lab No: 02635908
 Analyst: Joe Goecke
 Sample Date: 04/01/24
 Received Date: 05/15/24
 Completed: 05/21/24
 Joe Goecke
 Joe.goecke@HFSinclair.com

Recommendation: Acid Number is higher than normal, possibly from contamination since all other parameters are in acceptable range. Will schedule meeting with customer to discuss future sampling

Comments: Acid Number (AN) is abnormally high.

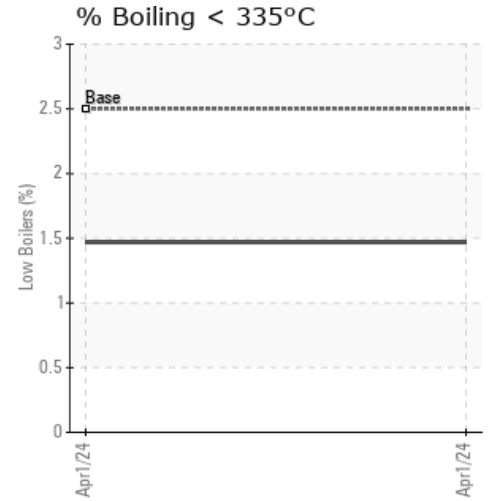
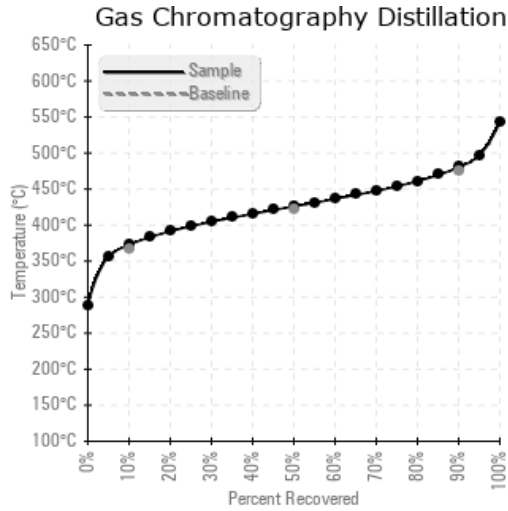
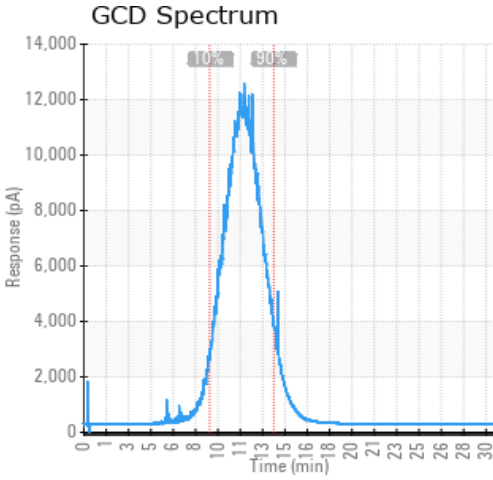
Sample Date	Received Date	Fluid Age	Sample Location	Flash Point (COC)	Water (KF)	Viscosity (40°C)	Acid Number	Solids	GCD 10%	GCD 50%	GCD 90%	GCD % < 335°C
	mm/dd/yy			°F/°C	ppm	cSt	mg/KOH/g	%wt	°F/°C	°F/°C	°F/°C	%
04/01/24	05/15/24	15.0y		453 / 234	145	32.3	0.36	0.056	703 / 373	799 / 426	897 / 480	1.47
Baseline Data				435 / 224		32.7	0.03		693 / 367	790 / 421	887 / 475	2.5





Sample Date	Iron	Chromium	Nickel	Aluminum	Copper	Lead	Tin	Cadmium	Silver	Vanadium	Silicon	Sodium	Potassium	Titanium	Molybdenum	Antimony	Manganese	Lithium	Boron	Magnesium	Calcium	Barium	Phosphorus	Zinc	
04/01/24	2	0	0	0	0	0	0	0	0	0	10	0	0	0	0	0	0	0	0	0	0	0	0	142	0
Baseline Data			0	0						0			0	0					0					270	

Elemental analysis results (above) in parts per million (ppm). [10,000 ppm = 1.0%]



Historical Comments

Petro-Canada makes no representation or warranty of any kind, either express or implied, as to the accuracy or completeness of the analysis and assumes no responsibility and shall have no liability whatsoever with respect to such analysis, or a party's use of it. Petro-Canada is a division of HollyFrontier Corporation.