

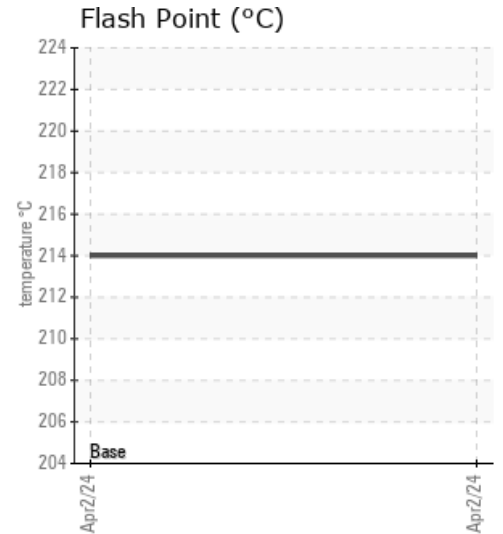
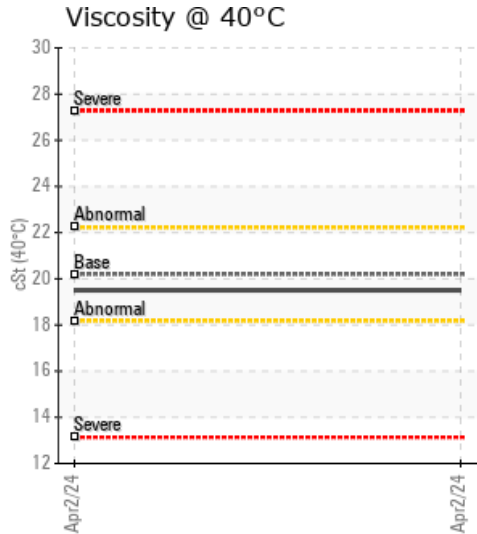
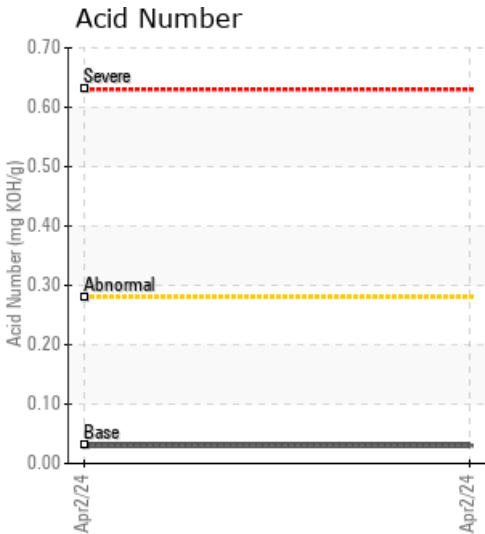
B17RVD38/PM15-07

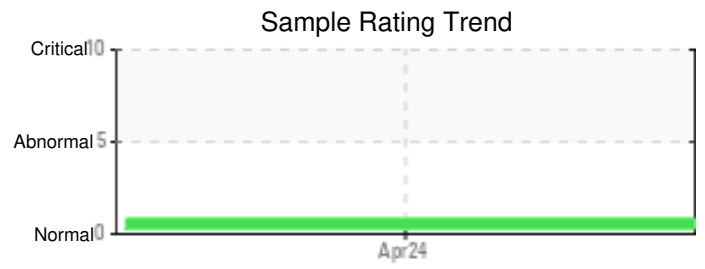
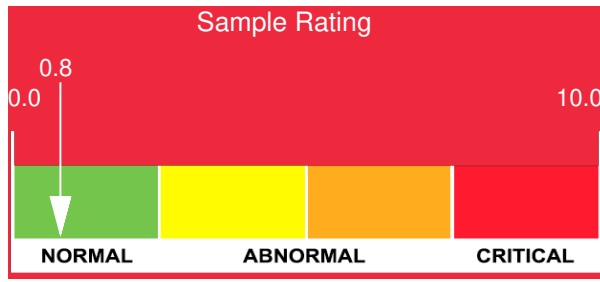
Customer: PTRHTF10011	System Information	Sample Information
G.F.S. CHEMICAL 851 Mckinley Avenue COLUMBUS, OH 43222 US Attn: Jamie Walters Tel: (800)446-4910 E-Mail: jamie@gfschemicals.com	System Volume: 30 gal Bulk Operating Temp: 350F / 177C Heating Source: Blanket: Fluid: MOBIL MOBILTHERM 603 Make: GFS CONSTRUCTION	Lab No: 02635909 Analyst: Joe Goecke Sample Date: 04/02/24 Received Date: 05/15/24 Completed: 05/21/24 Joe Goecke joe.goecke@HFSinclair.com

Recommendation: mobiltherm 603 is not a Petro Canada Product, however most data points look within parameters and ok to use. Will schedule a meeting with customer to discuss next steps

Comments: (GCD) 90% Distillation Point is abnormally low.

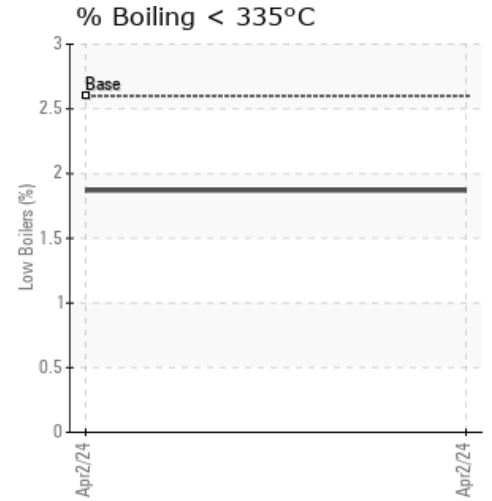
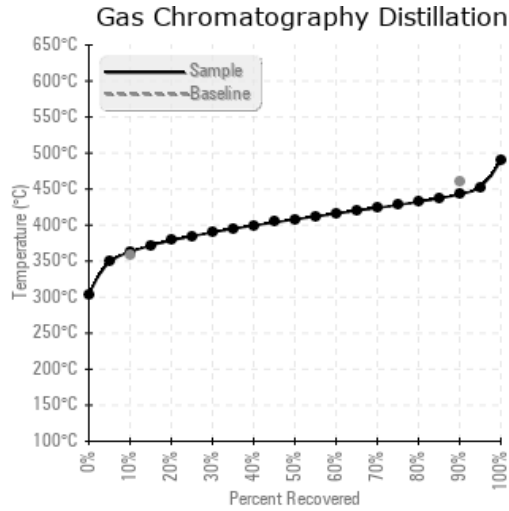
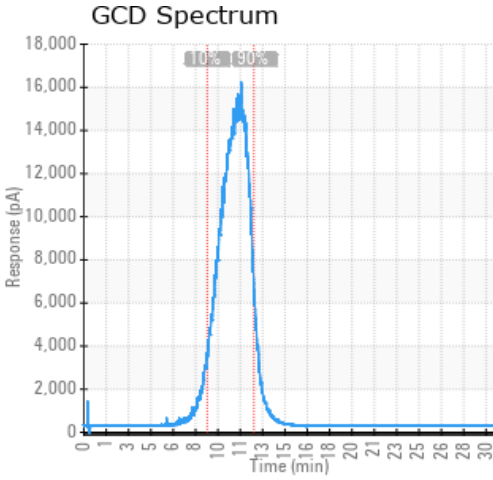
Sample Date	Received Date	Fluid Age	Sample Location	Flash Point (COC)	Water (KF)	Viscosity (40°C)	Acid Number	Solids	GCD 10%	GCD 50%	GCD 90%	GCD % < 335°C
	mm/dd/yy			°F/°C	ppm	cSt	mg/KOH/g	%wt	°F/°C	°F/°C	°F/°C	%
04/02/24	05/15/24	13.0y		417 / 214	15	19.5	0.03	0.049	685 / 363	766 / 408	829 / 443	1.87
Baseline Data				379 / 193		20.2	0.03		676 / 358		858 / 459	2.6





Sample Date	Iron	Chromium	Nickel	Aluminum	Copper	Lead	Tin	Cadmium	Silver	Vanadium	Silicon	Sodium	Potassium	Titanium	Molybdenum	Antimony	Manganese	Lithium	Boron	Magnesium	Calcium	Barium	Phosphorus	Zinc	
04/02/24	0	0	0	0	2	5	0	0	0	0	6	0	0	0	0	0	0	0	0	0	0	0	0	3	0
Baseline Data			0	0						0			0	0					0				0		

Elemental analysis results (above) in parts per million (ppm). [10,000 ppm = 1.0%]



Historical Comments

Petro-Canada makes no representation or warranty of any kind, either express or implied, as to the accuracy or completeness of the analysis and assumes no responsibility and shall have no liability whatsoever with respect to such analysis, or a party's use of it. Petro-Canada is a division of HollyFrontier Corporation.