

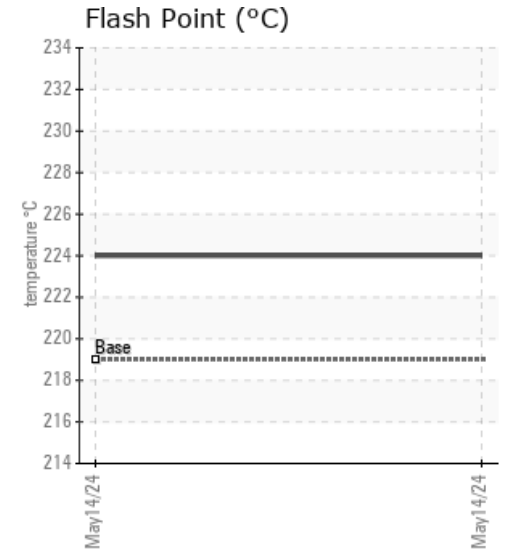
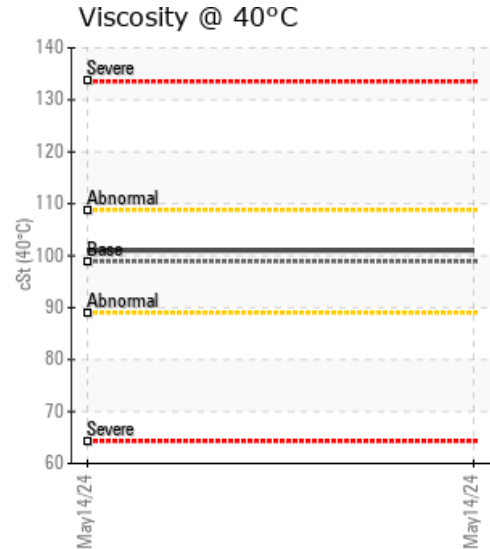
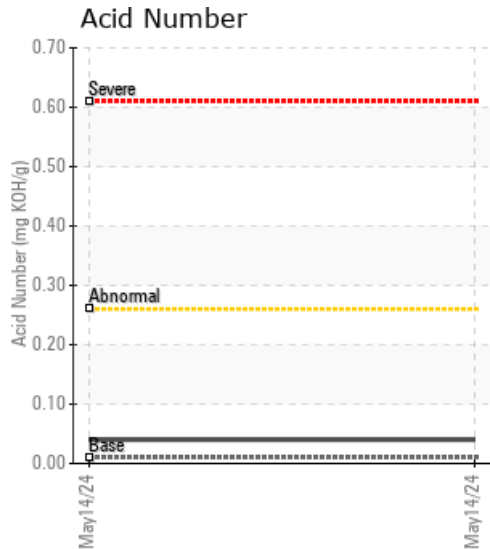
06182339

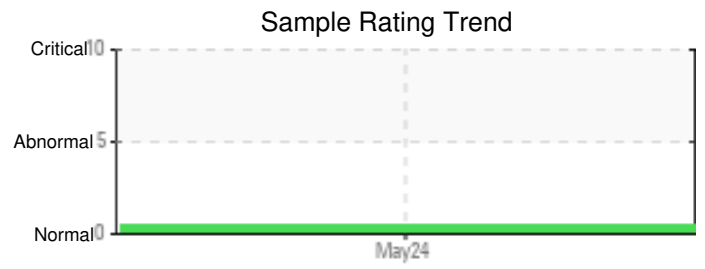
Customer:	System Information	Sample Information
WEARCHECK USA 501 Madison Ave Cary, NC 27513 US Attn: CATHERINE ANASTASIO Tel: E-Mail: CANASTASIO@WEARCHECKUSA.CO	System Volume: 0 gal Bulk Operating Temp: Not Specified Heating Source: Blanket: Fluid: ERGON HYGOLD L500 Make:	Lab No: 02636510 Analyst: Bill Quesnel CLS,OMA II,MLA-III,LLA-I Sample Date: 05/14/24 Received Date: 05/17/24 Completed: 06/04/24 Bill Quesnel CLS,OMA II,MLA-III,LLA-I

Recommendation: The fluid is suitable for further service. Resample at the next service interval to monitor.

Comments: All component wear rates are normal. The water content is negligible. There is no indication of any contamination in the fluid. The AN level is acceptable for this fluid. The condition of the fluid is suitable for further service.

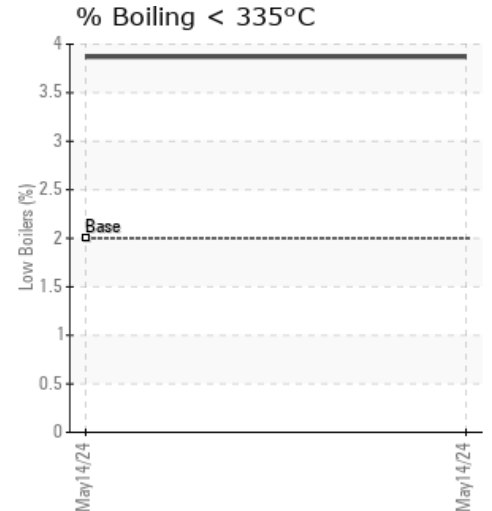
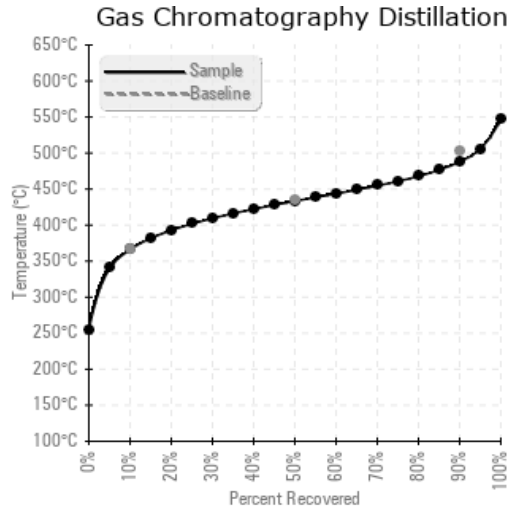
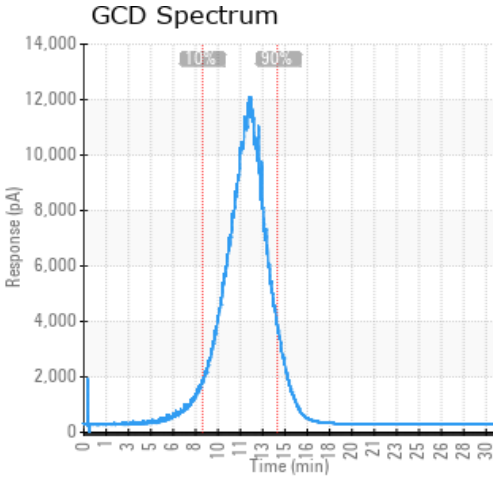
Sample Date	Received Date	Fluid Age	Sample Location	Flash Point (COC)	Water (KF)	Viscosity (40°C)	Acid Number	Solids	GCD 10%	GCD 50%	GCD 90%	GCD % < 335°C
	mm/dd/yy			°F/°C	ppm	cSt	mg/KOH/g	%wt	°F/°C	°F/°C	°F/°C	%
05/14/24	05/17/24	0.0h		435 / 224	31	101	0.04	0.084	691 / 366	812 / 433	910 / 488	3.87
Baseline Data				426 / 219		98.9	0.01		693 / 367	813 / 434	937 / 503	2.0





Sample Date	Iron	Chromium	Nickel	Aluminum	Copper	Lead	Tin	Cadmium	Silver	Vanadium	Silicon	Sodium	Potassium	Titanium	Molybdenum	Antimony	Manganese	Lithium	Boron	Magnesium	Calcium	Barium	Phosphorus	Zinc
05/14/24	17	0	0	0	0	0	0	0	0	0	0	0	0	0	0	0	0	0	0	0	0	0	0	0
Baseline Data			0	0						0			0	0				0	0				0	

Elemental analysis results (above) in parts per million (ppm). [10,000 ppm = 1.0%]



Historical Comments
