

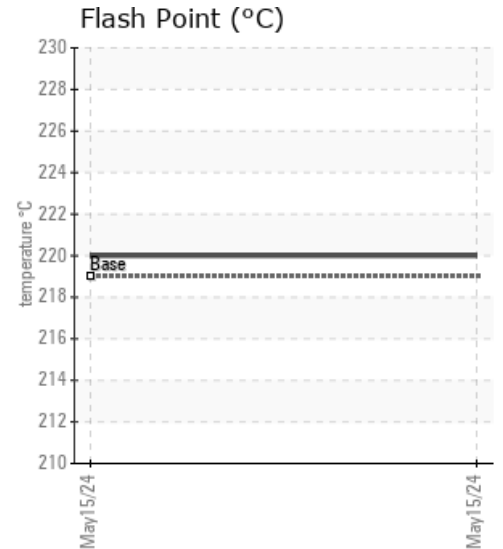
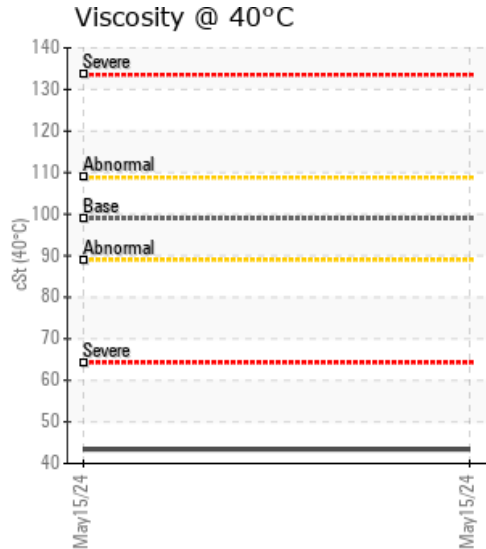
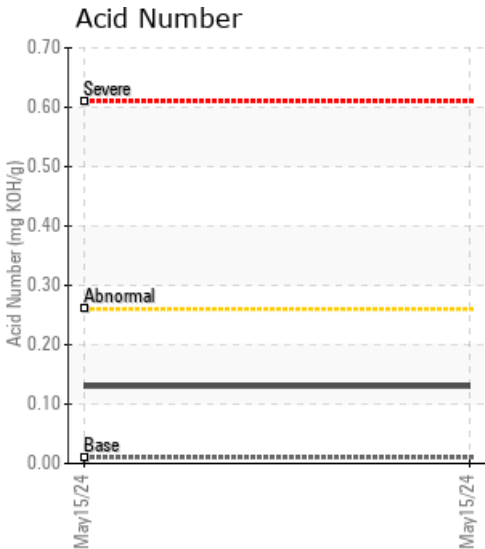
06182338

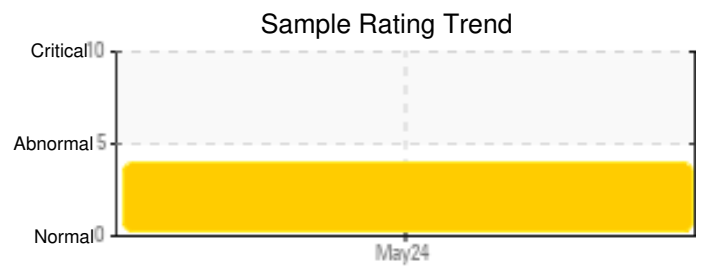
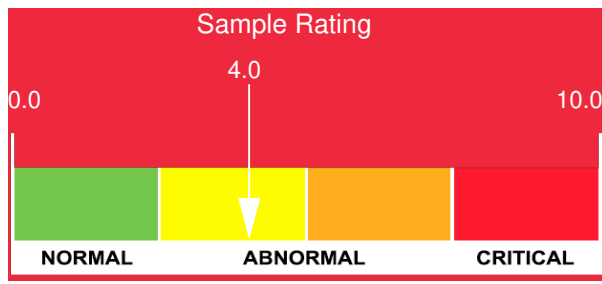
Customer:	System Information	Sample Information
WEARCHECK USA 501 Madison Ave Cary, NC 27513 US Attn: CATHERINE ANASTASIO Tel: E-Mail: CANASTASIO@WEARCHECKUSA.CO	System Volume: 0 gal Bulk Operating Temp: Not Specified Heating Source: Blanket: Fluid: ERGON HYGOLD L500 Make:	Lab No: 02636511 Analyst: Bill Quesnel CLS,OMA II,MLA-III,LLA-I Sample Date: 05/15/24 Received Date: 05/17/24 Completed: 06/06/24 Bill Quesnel CLS,OMA II,MLA-III,LLA-I

Recommendation: The viscosity has dropped significantly however this has not affected the flash point or simdis results. Suggest monitoring in 3 months to ensure viscosity does not continue to drop.

Comments: All component wear rates are normal. The water content is negligible. Barium ppm levels are abnormally high. Calcium ppm levels are abnormally high. Visc @ 40°C is abnormally low. Viscosity of sample indicates oil is within ISO 46 range, advise investigate. The AN level is acceptable for this fluid.

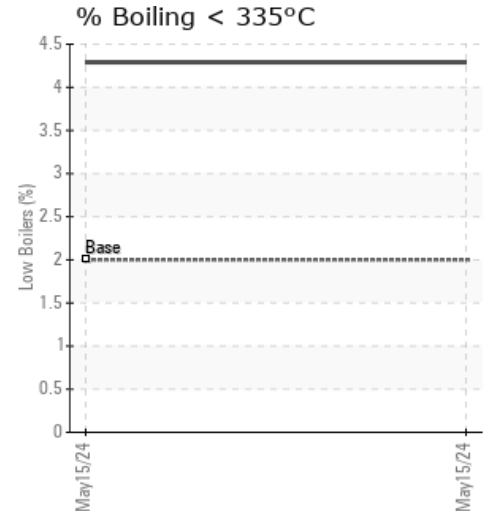
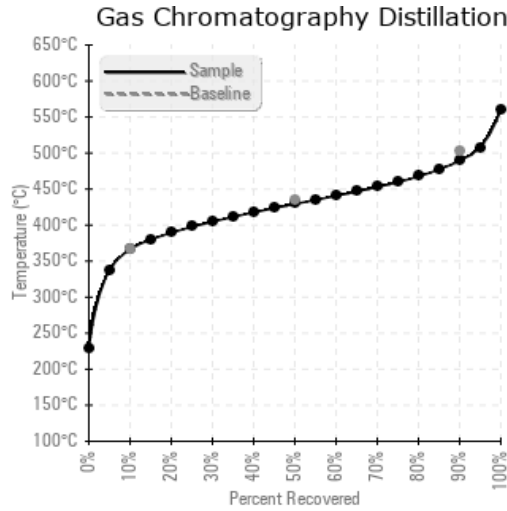
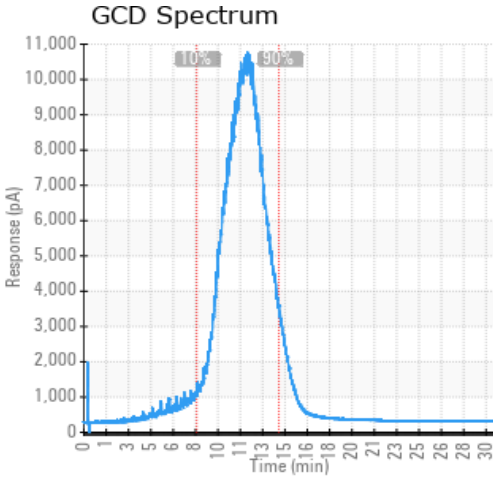
Sample Date	Received Date	Fluid Age	Sample Location	Flash Point (COC)	Water (KF)	Viscosity (40°C)	Acid Number	Solids	GCD 10%	GCD 50%	GCD 90%	GCD % < 335°C
	mm/dd/yy			°F/°C	ppm	cSt	mg/KOH/g	%wt	°F/°C	°F/°C	°F/°C	%
05/15/24	05/17/24	0.0h		428 / 220	37	43.4	0.13	0.472	692 / 367	805 / 429	913 / 490	4.29
Baseline Data				426 / 219		98.9	0.01		693 / 367	813 / 434	937 / 503	2.0





Sample Date	Iron	Chromium	Nickel	Aluminum	Copper	Lead	Tin	Cadmium	Silver	Vanadium	Silicon	Sodium	Potassium	Titanium	Molybdenum	Antimony	Manganese	Lithium	Boron	Magnesium	Calcium	Barium	Phosphorus	Zinc
05/15/24	0	0	0	0	0	0	0	0	0	0	0	0	0	0	0	0	0	0	0	0	44	28	0	0
Baseline Data			0	0						0			0	0				0	0				0	

Elemental analysis results (above) in parts per million (ppm). [10,000 ppm = 1.0%]



Historical Comments	