

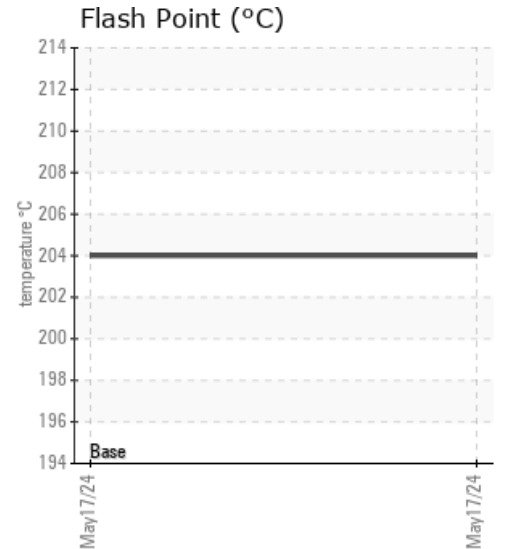
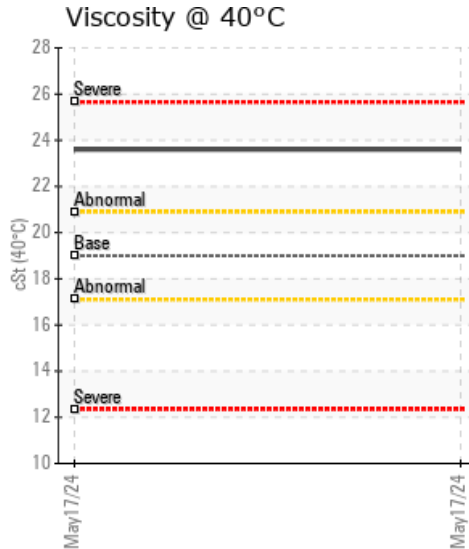
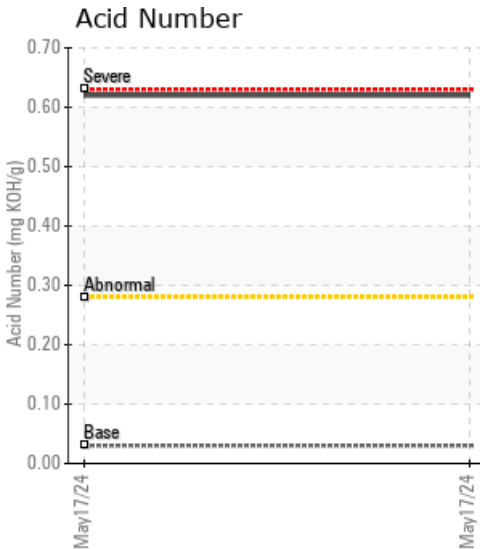
NEW DIAMOND STARTCH

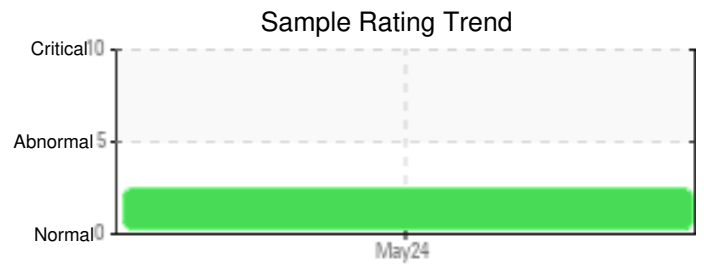
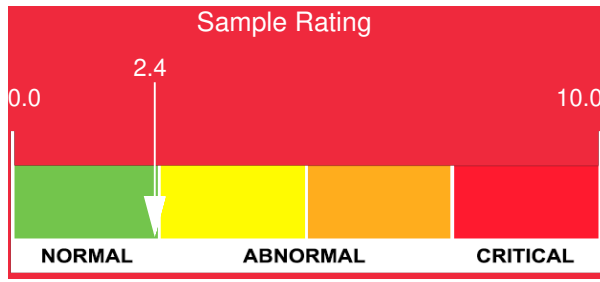
Customer: PTRHTF60010	System Information	Sample Information
SYNLUBE INTERNATIONAL CO LTD 76/1 MOO.7 THACHIN MUANG SAMUTSAKHON, 74000 TH Attn: CHERNPORN CHOBKUI Tel: 034421290 E-Mail: chernporn@synlube.co.th	System Volume: 10000 ltr Bulk Operating Temp: 536F / 280C Heating Source: Blanket: Fluid: EASTMAN THERMINOL 55 Make:	Lab No: 02637566 Analyst: Bill Quesnel CLS,OMA II,MLA-III,LLA-I Sample Date: 05/17/24 Received Date: 05/24/24 Completed: 05/29/24 Bill Quesnel CLS,OMA II,MLA-III,LLA-I

Recommendation: We recommend that you vent the expansion tank to remove low boilers which assists in restoring the flash point of the fluid. The fluid is suitable for further service. Resample at the next service interval to monitor.

Comments: Acid Number (AN) is abnormally high. (GCD) 90% Distillation Point is abnormally high. Zinc ppm levels are abnormally high.

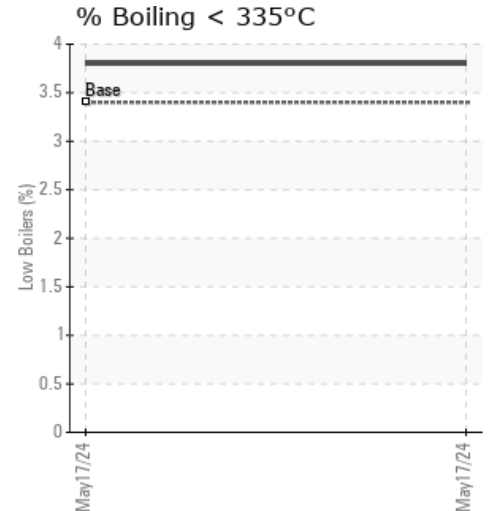
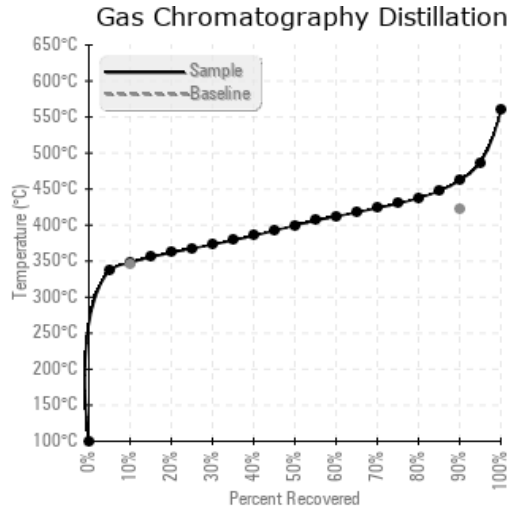
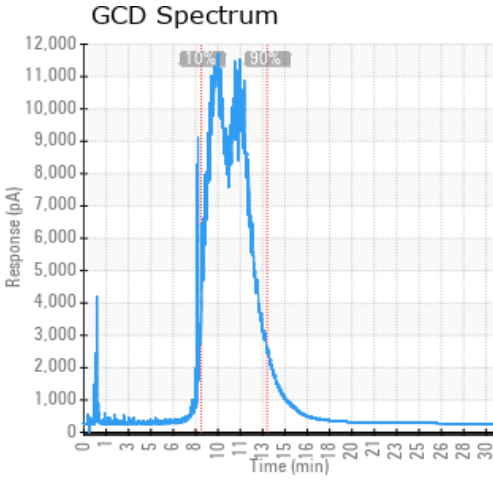
Sample Date	Received Date	Fluid Age	Sample Location	Flash Point (COC)	Water (KF)	Viscosity (40°C)	Acid Number	Solids	GCD 10%	GCD 50%	GCD 90%	GCD % < 335°C
	mm/dd/yy			°F/°C	ppm	cSt	mg/KOH/g	%wt	°F/°C	°F/°C	°F/°C	%
05/17/24	05/24/24	10.0y		399 / 204	79	23.6	0.62	0.364	658 / 348	751 / 399	863 / 462	3.80
Baseline Data				349 / 176		19.0	0.03		655 / 346		790 / 421	3.40





Sample Date	Iron	Chromium	Nickel	Aluminum	Copper	Lead	Tin	Cadmium	Silver	Vanadium	Silicon	Sodium	Potassium	Titanium	Molybdenum	Antimony	Manganese	Lithium	Boron	Magnesium	Calcium	Barium	Phosphorus	Zinc
05/17/24	8	0	0	0	0	0	0	0	0	0	0	0	0	0	0	0	0	0	0	0	3	0	0	84
Baseline Data			0	0						0			0	0				0	0				0	

Elemental analysis results (above) in parts per million (ppm). [10,000 ppm = 1.0%]



Historical Comments

Petro-Canada makes no representation or warranty of any kind, either express or implied, as to the accuracy or completeness of the analysis and assumes no responsibility and shall have no liability whatsoever with respect to such analysis, or a party's use of it. Petro-Canada is a division of HollyFrontier Corporation.