

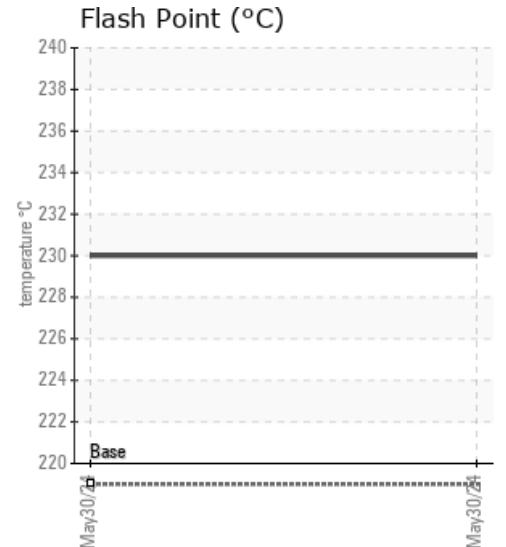
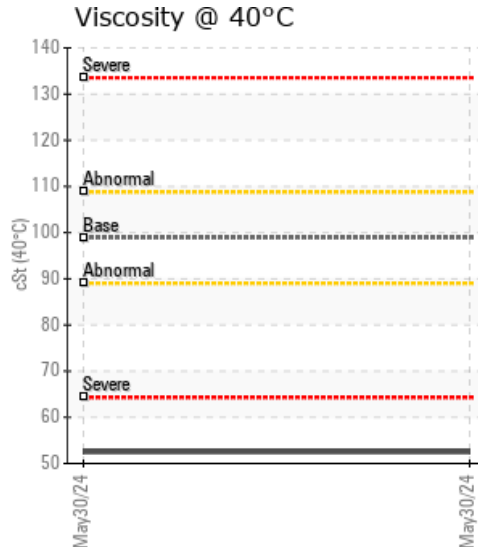
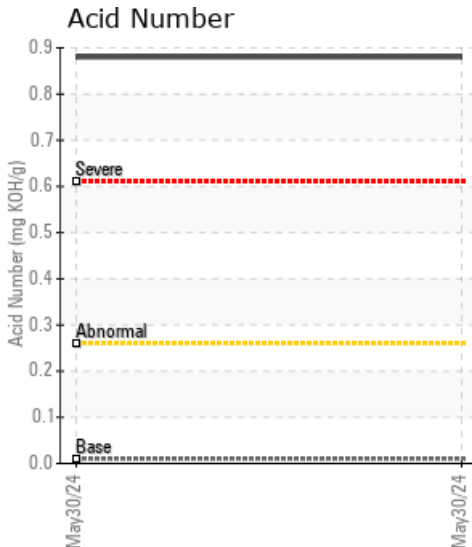
**06193490**

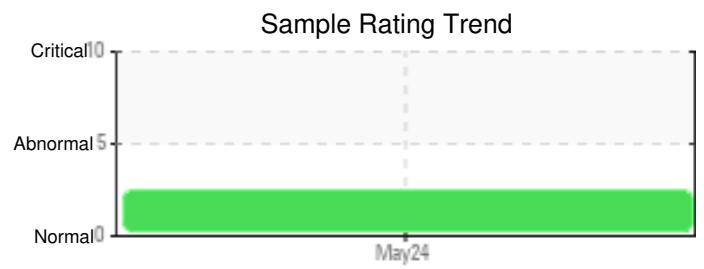
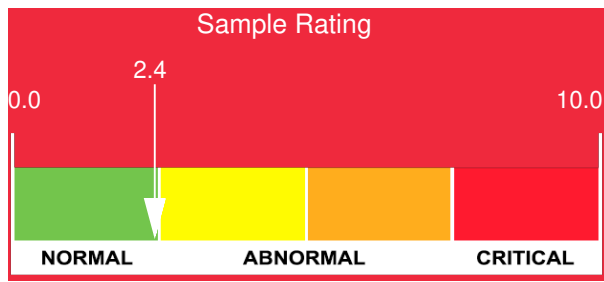
Customer:	System Information	Sample Information
WEARCHECK USA 501 Madison Ave Cary, NC 27513 US Attn: CATHERINE ANASTASIO Tel: E-Mail: CANASTASIO@WEARCHECKUSA.CO	System Volume: 0 gal Bulk Operating Temp: Not Specified Heating Source: Blanket: Fluid: ERGON HYGOLD L500 Make:	Lab No: 02639031 Analyst: Bill Quesnel CLS,OMA II,MLA-III,LLA-I Sample Date: 05/30/24 Received Date: 05/30/24 Completed: 06/06/24 Bill Quesnel CLS,OMA II,MLA-III,LLA-I

Recommendation: The fluid is suitable for further service. Resample at the next service interval to monitor.

Comments: Pentane Insolubles levels are abnormally high. Acid Number (AN) is abnormally high. Visc @ 40°C is abnormally low.

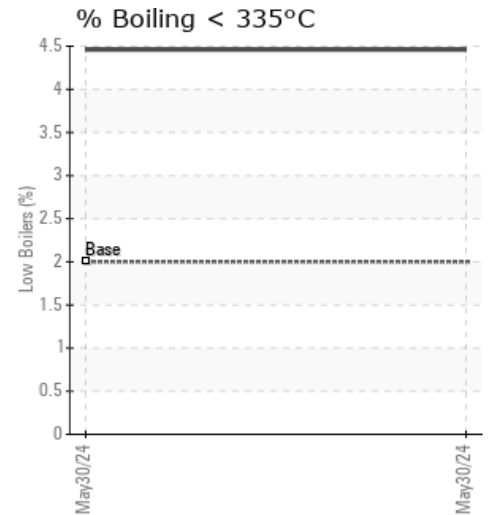
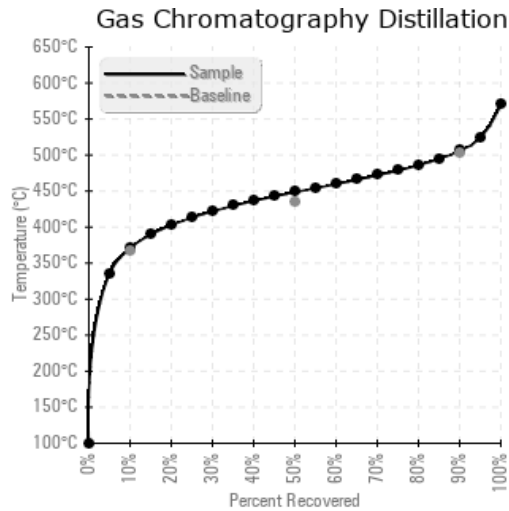
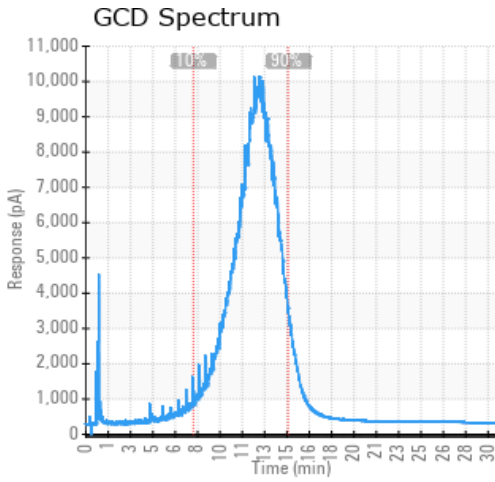
Sample Date	Received Date	Fluid Age	Sample Location	Flash Point (COC)	Water (KF)	Viscosity (40°C)	Acid Number	Solids	GCD 10%	GCD 50%	GCD 90%	GCD % < 335°C
	mm/dd/yy			°F/°C	ppm	cSt	mg/KOH/g	%wt	°F/°C	°F/°C	°F/°C	%
05/30/24	05/30/24	0.0h		446 / 230	53	52.5	0.88	0.684	699 / 371	839 / 448	942 / 506	4.46
Baseline Data				426 / 219		98.9	0.01		693 / 367	813 / 434	937 / 503	2.0





Sample Date	Iron	Chromium	Nickel	Aluminum	Copper	Lead	Tin	Cadmium	Silver	Vanadium	Silicon	Sodium	Potassium	Titanium	Molybdenum	Antimony	Manganese	Lithium	Boron	Magnesium	Calcium	Barium	Phosphorus	Zinc
05/30/24	55	0	0	0	0	0	0	0	0	0	2	1	0	0	0	0	0	0	0	0	2	1	3	6
<b>Baseline Data</b>			0	0						0			0	0				0	0				0	

Elemental analysis results (above) in parts per million (ppm). [10,000 ppm = 1.0%]



### Historical Comments
