

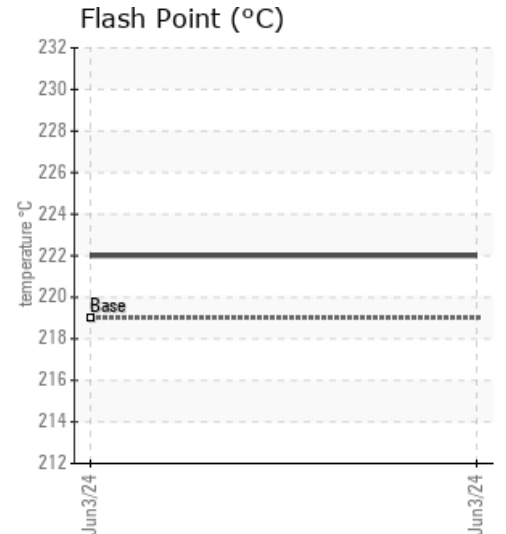
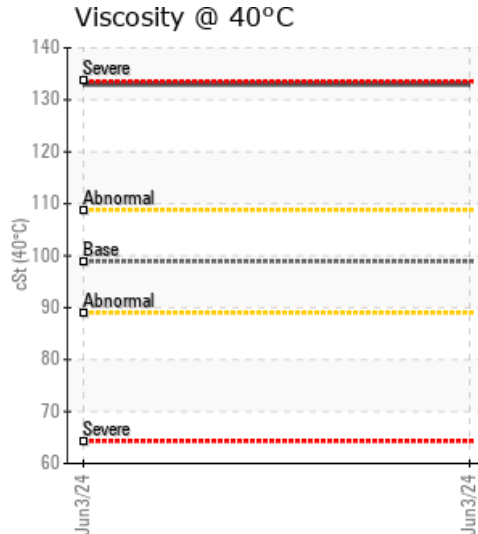
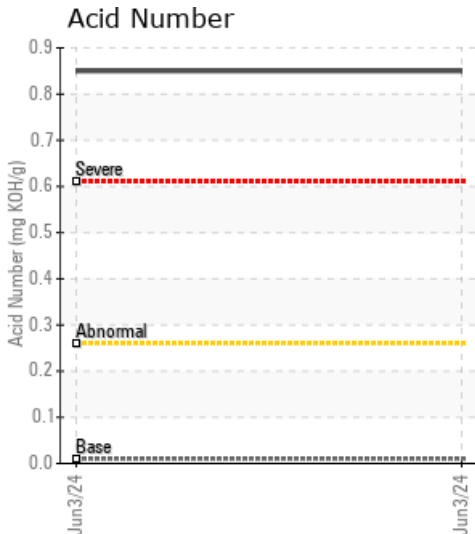
06196175

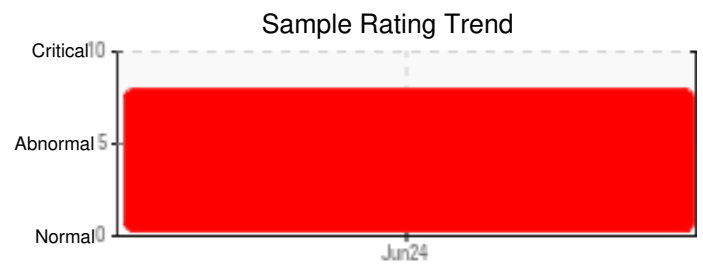
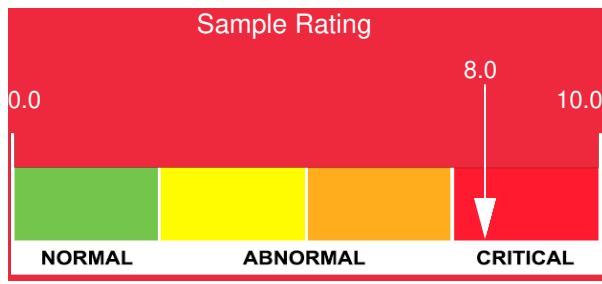
Customer:	System Information	Sample Information
WEARCHECK USA 501 Madison Ave Cary, NC 27513 US Attn: CATHERINE ANASTASIO Tel: E-Mail: CANASTASIO@WEARCHECKUSA.CO	System Volume: Bulk Operating Temp: Not Specified Heating Source: Blanket: Fluid: ERGON HYGOLD L500 Make:	Lab No: 02639728 Analyst: Bill Quesnel CLS,OMA II,MLA-III,LLA-I Sample Date: 06/03/24 Received Date: 06/04/24 Completed: 06/11/24 Bill Quesnel CLS,OMA II,MLA-III,LLA-I

Recommendation: This product is thermally degraded. Review the heat transfer efficiency of this system to determine if it is financially advisable to drain and replace the fluid.

Comments: Pentane Insolubles levels are severely high. Acid Number (AN) is severely high. (GCD) 10% Distillation Point is severely high. (GCD) 50% Distillation Point is severely high. (GCD) 90% Distillation Point is severely high. Visc @ 40°C is abnormally high.

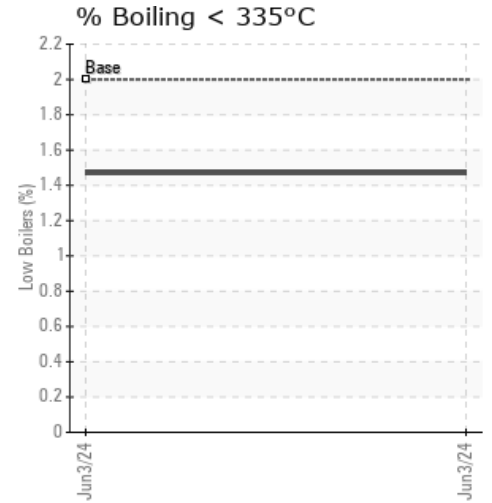
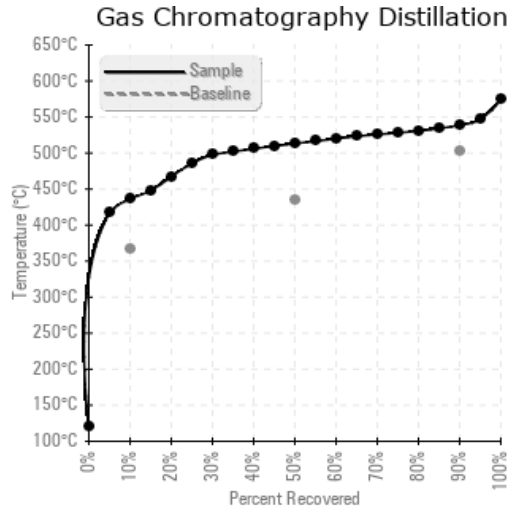
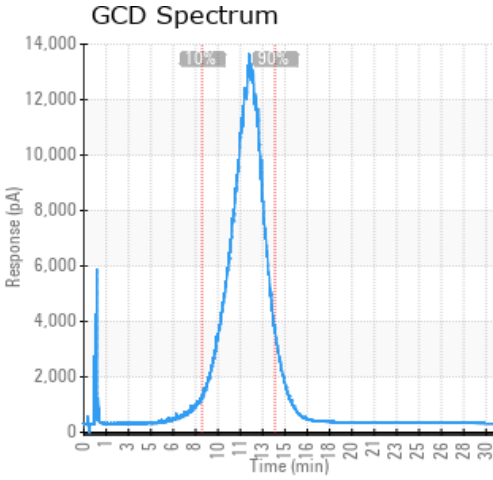
Sample Date	Received Date	Fluid Age	Sample Location	Flash Point (COC)	Water (KF)	Viscosity (40°C)	Acid Number	Solids	GCD 10%	GCD 50%	GCD 90%	GCD % < 335°C
	mm/dd/yy			°F/°C	ppm	cSt	mg/KOH/g	%wt	°F/°C	°F/°C	°F/°C	%
06/03/24	06/04/24	0.0h		432 / 222	58	133	0.85	0.952	818 / 437	956 / 513	1002 / 539	1.47
Baseline Data				426 / 219		98.9	0.01		693 / 367	813 / 434	937 / 503	2.0





Sample Date	Iron	Chromium	Nickel	Aluminum	Copper	Lead	Tin	Cadmium	Silver	Vanadium	Silicon	Sodium	Potassium	Titanium	Molybdenum	Antimony	Manganese	Lithium	Boron	Magnesium	Calcium	Barium	Phosphorus	Zinc	
06/03/24	19	0	0	0	0	0	0	0	0	0	0	2	0	0	0	0	0	0	0	0	0	0	0	0	0
Baseline Data			0	0						0			0	0				0	0				0		

Elemental analysis results (above) in parts per million (ppm). [10,000 ppm = 1.0%]



Historical Comments
