

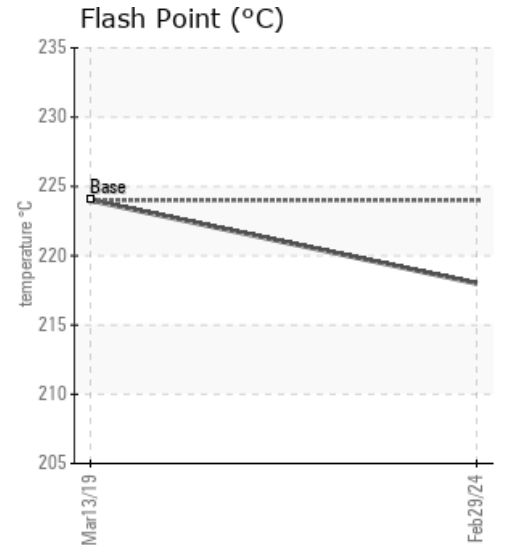
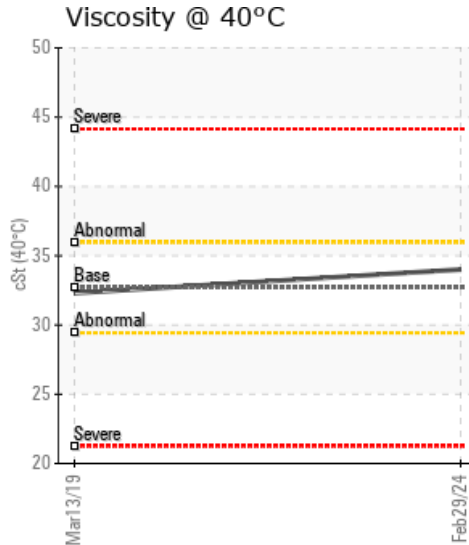
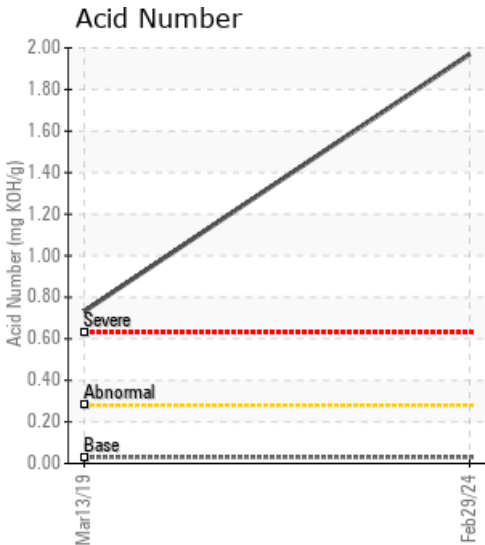
GL VENEER

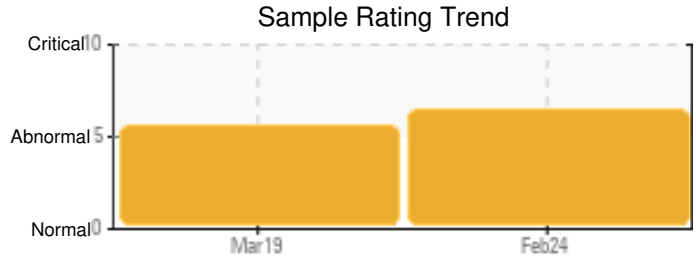
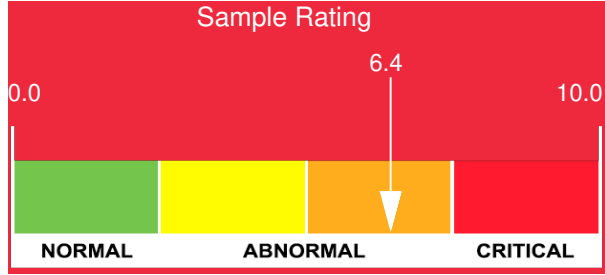
Customer: PTRHTF10012	System Information	Sample Information
GL VENEER 2224 E. SLAUSON AVENUE HUNTINGTON PARK, CA US Attn: Prakash/Marcel Mehta/Dhont Tel: (818)709-0492 E-Mail: purelubricants@earthlink.net	System Volume: 600 gal Bulk Operating Temp: 300F / 149C Heating Source: Blanket: Fluid: PETRO CANADA CALFLO AF Make:	Lab No: 02641870 Analyst: Carlos Nazario Sample Date: 02/29/24 Received Date: 06/13/24 Completed: 06/19/24 Carlos Nazario Carlos.Nazario@hfsinclair.com

Recommendation: Based on test results, lubricant is getting to the end of its useful life and needs to be replaced. Drain, clean, flush and refill will be needed soon to prevent excessive sludge and residues formation in the system; CalFlo Cleaning and Calflo Flushing fluids are recommended. If the next equipment shutdown is planned for the next 6-12 months, then, system should be sweetened by draining 50-60% of current oil and refill it with fresh oil to continue operating till the next equipment shutdown happens. Please contact your designated PCA tech service (TSA : Carlos Nazario) for further discussion.

Comments: Iron ppm levels are abnormal. Pentane Insolubles levels are severely high. Acid Number (AN) is severely high. (GCD) 90% Distillation Point is marginally high.

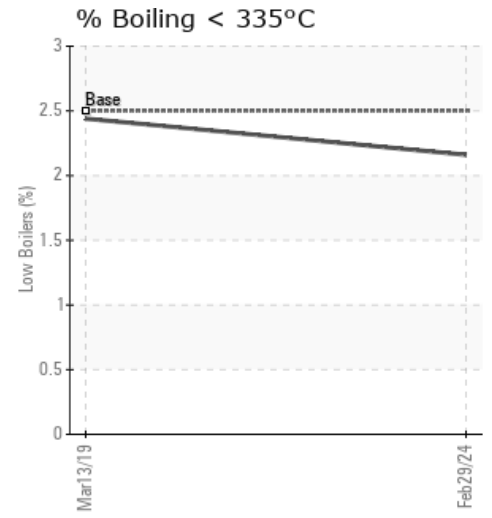
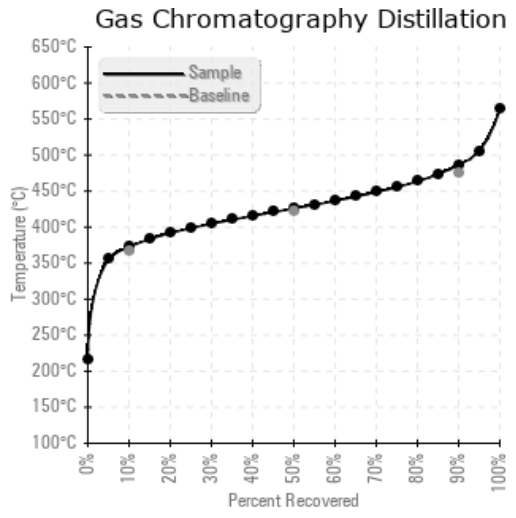
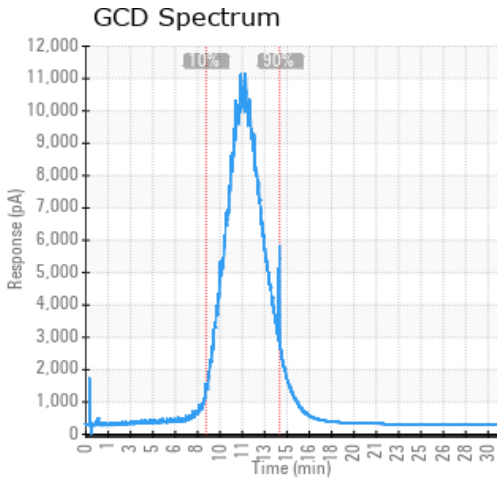
Sample Date	Received Date	Fluid Age	Sample Location	Flash Point (COC)	Water (KF)	Viscosity (40°C)	Acid Number	Solids	GCD 10%	GCD 50%	GCD 90%	GCD % < 335°C
	mm/dd/yy			°F/°C	ppm	cSt	mg/KOH/g	%wt	°F/°C	°F/°C	°F/°C	%
02/29/24	06/13/24	48.0h		424 / 218	81	34.0	1.97	1.90	702 / 372	799 / 426	907 / 486	2.16
03/13/19	04/04/19	0.0h		435 / 224	41.6	32.3	0.732	0.917	690 / 366	794 / 424	905 / 485	2.44
Baseline Data				435 / 224		32.7	0.03		693 / 367	790 / 421	887 / 475	2.5





Sample Date	Iron	Chromium	Nickel	Aluminum	Copper	Lead	Tin	Cadmium	Silver	Vanadium	Silicon	Sodium	Potassium	Titanium	Molybdenum	Antimony	Manganese	Lithium	Boron	Magnesium	Calcium	Barium	Phosphorus	Zinc
02/29/24	218	0	0	0	0	0	0	0	0	0	0	0	0	0	0	0	2	0	0	0	0	0	261	2
03/13/19	342	0	0	0	0	0	0	0	0	0	3	0	0	0	0	0	4	0	0	0	2	0	259	4
Baseline Data			0	0						0			0	0				0					270	

Elemental analysis results (above) in parts per million (ppm). [10,000 ppm = 1.0%]



Historical Comments	
03/13/19	The acid number and pentane insolubles are severely high. Iron levels are also very high. First determine where the iron is coming from and correct the problem. Next, review the system and determine how the exposure to air can be minimized. Subsequently drain, clean and flush the system before refilling with new heat transfer fluid. A partial replacement of the fluid won't correct the acid number and pentane insoluble issues. Iron ppm levels are abnormal. Pentane Insolubles levels are severely high. Acid Number (AN) is severely high.

Petro-Canada makes no representation or warranty of any kind, either express or implied, as to the accuracy or completeness of the analysis and assumes no responsibility and shall have no liability whatsoever with respect to such analysis, or a party's use of it. Petro-Canada is a division of HollyFrontier Corporation.