

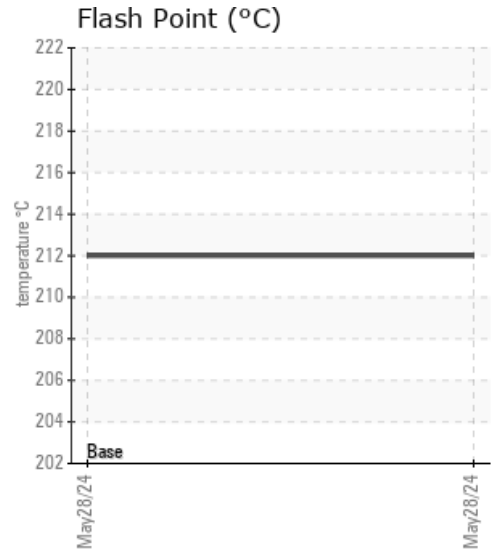
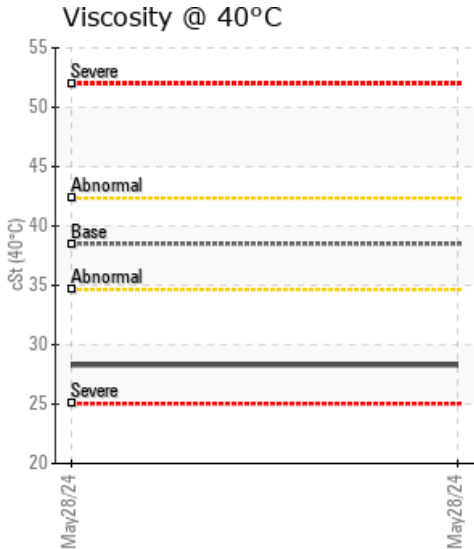
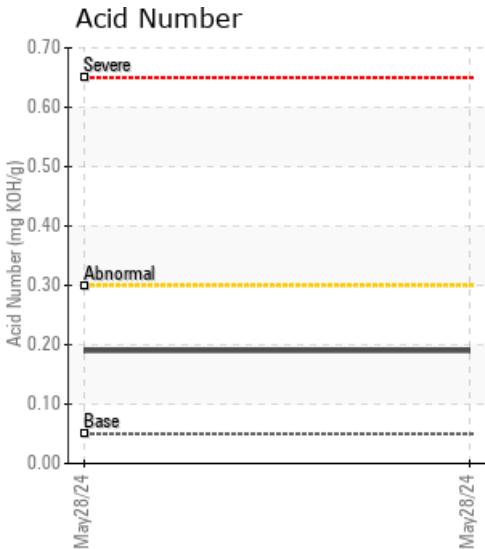
### BBF LINE 3

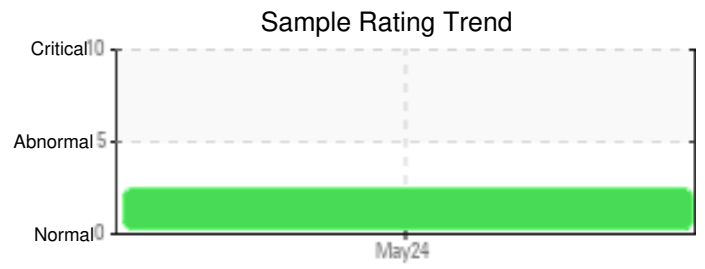
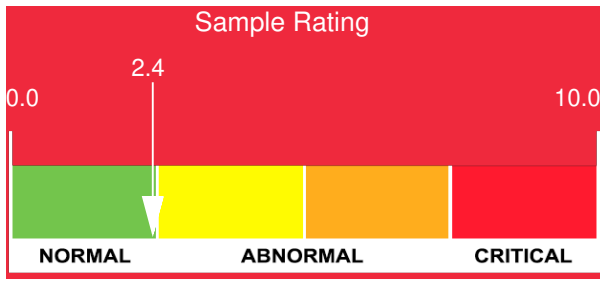
Customer: PTRHTF60029	System Information	Sample Information
Envireau Pacific Inc. Ground Floor Babista Bldg. J.Palma Gil St. Davao City, ZZ 8000 PH Attn: Francis Ramirez Tel: E-Mail: fxbramirez@envireaupacific.com	System Volume: 5200 ltr Bulk Operating Temp: 536F / 280C Heating Source: Blanket: Fluid: SHELL HEAT TRANSFER OIL S2 Make: HIBACHI 100HP	Lab No: 02642173 Analyst: Bill Quesnel CLS,OMA II,MLA-III,LLA-I Sample Date: 05/28/24 Received Date: 06/14/24 Completed: 06/24/24 Bill Quesnel CLS,OMA II,MLA-III,LLA-I

Recommendation: The fluid is suitable for further service. Resample at the next service interval to monitor.

Comments: (GCD) 90% Distillation Point is severely low.

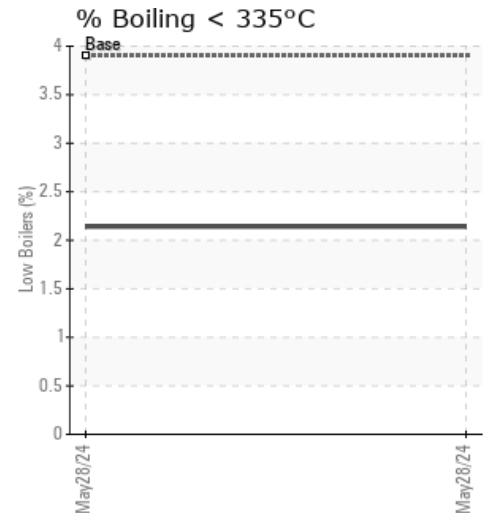
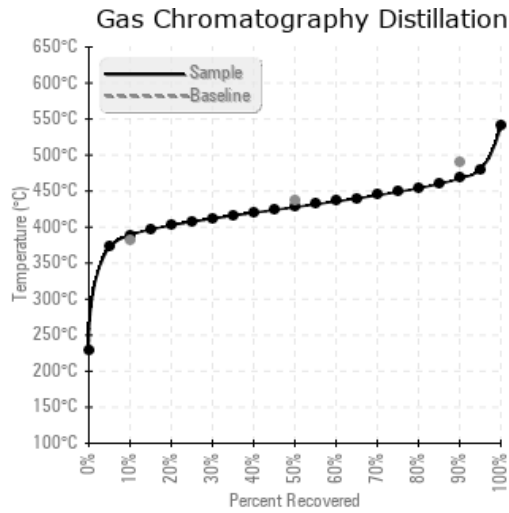
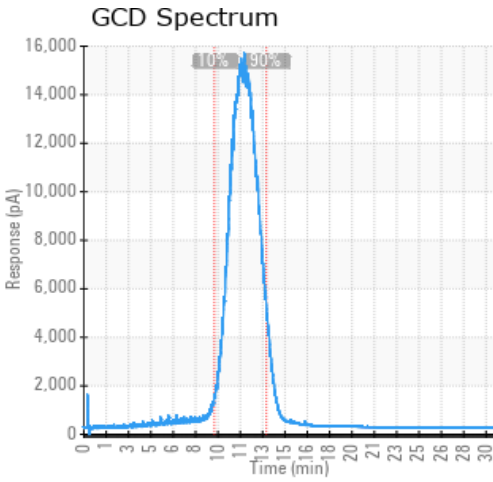
Sample Date	Received Date	Fluid Age	Sample Location	Flash Point (COC)	Water (KF)	Viscosity (40°C)	Acid Number	Solids	GCD 10%	GCD 50%	GCD 90%	GCD % < 335°C
	mm/dd/yy			°F/°C	ppm	cSt	mg/KOH/g	%wt	°F/°C	°F/°C	°F/°C	%
05/28/24	06/14/24	0.0y		414 / 212	41	28.3	0.19	0.124	732 / 389	802 / 428	874 / 468	2.14
Baseline Data				383 / 195		38.5	0.05		718 / 381	819 / 437	914 / 490	3.9





Sample Date	Iron	Chromium	Nickel	Aluminum	Copper	Lead	Tin	Cadmium	Silver	Vanadium	Silicon	Sodium	Potassium	Titanium	Molybdenum	Antimony	Manganese	Lithium	Boron	Magnesium	Calcium	Barium	Phosphorus	Zinc	
05/28/24	8	0	0	0	0	0	0	0	0	0	0	0	0	0	0	0	0	0	0	0	0	0	0	0	0
<b>Baseline Data</b>			0	0						0			0	0					0				0		

Elemental analysis results (above) in parts per million (ppm). [10,000 ppm = 1.0%]



### Historical Comments


Petro-Canada makes no representation or warranty of any kind, either express or implied, as to the accuracy or completeness of the analysis and assumes no responsibility and shall have no liability whatsoever with respect to such analysis, or a party's use of it. Petro-Canada is a division of HollyFrontier Corporation.