

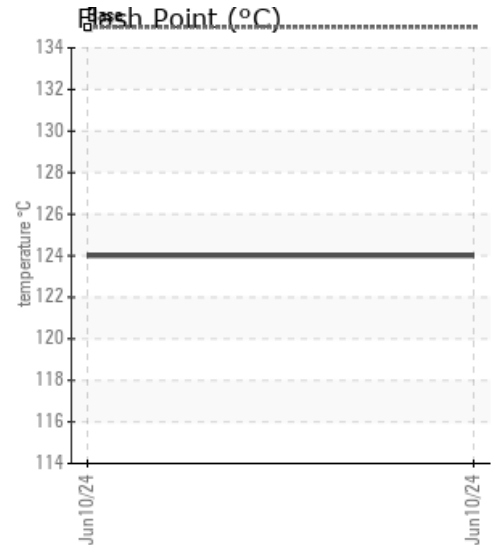
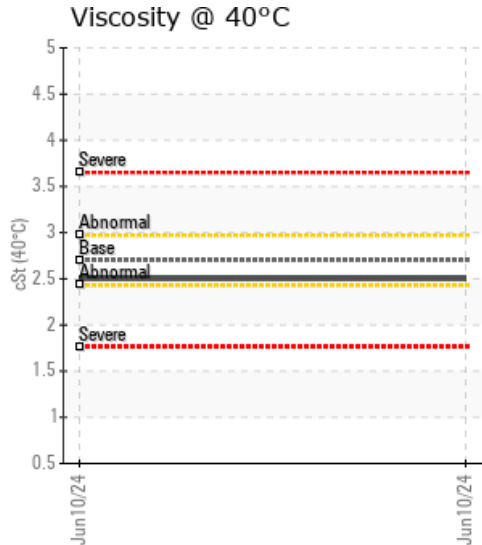
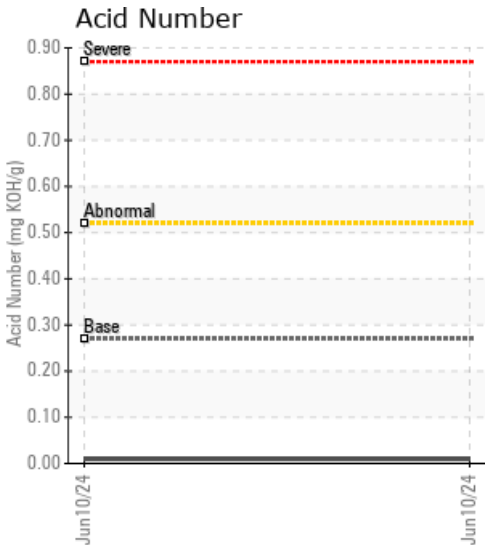
## LINE 12

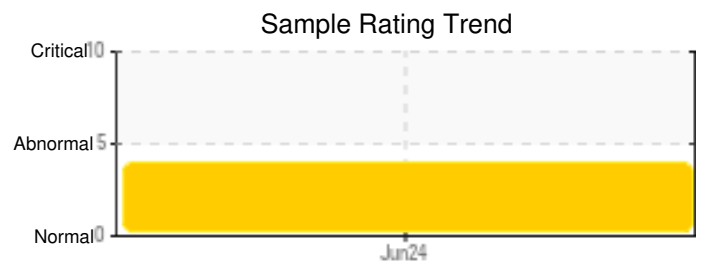
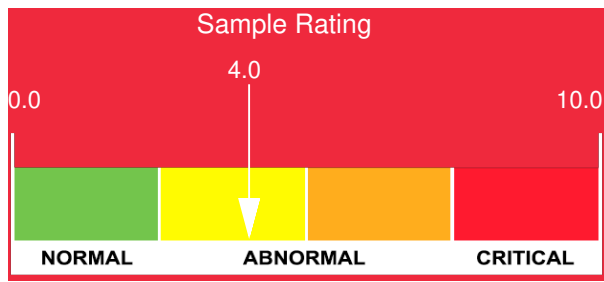
Customer: PTRHTF60086	System Information	Sample Information
Integrated Fiber Solutions 2313 Dalton Industrial Court Dalton, GA 30721 US Attn: Billy Blevins Tel: (706)463-0551 E-Mail: bblevins@intfibers.com	System Volume: 270 ltr Bulk Operating Temp: 626F / 330C Heating Source: Blanket: Fluid: DOW CHEMICAL DOWTHERM LF Make: Werkstartten	Lab No: 02643538 Analyst: Bill Quesnel CLS,OMA II,MLA-III,LLA-I Sample Date: 06/10/24 Received Date: 06/21/24 Completed: 06/26/24 Bill Quesnel CLS,OMA II,MLA-III,LLA-I

Recommendation: The fluid is suitable for further service. Resample at the next service interval to monitor.

Comments: Water contamination levels are marginally high. ppm Water contamination levels are marginally high. (GCD) 90% Distillation Point is severely low.

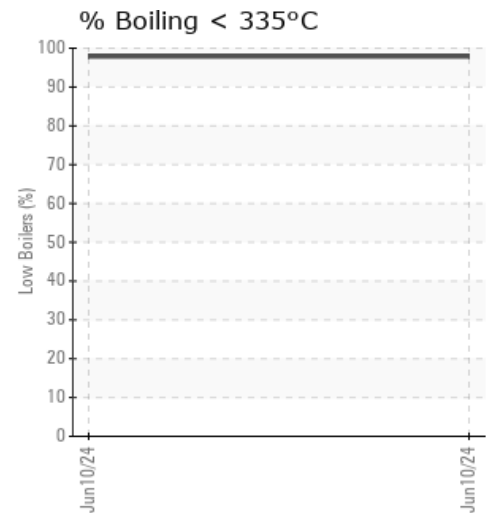
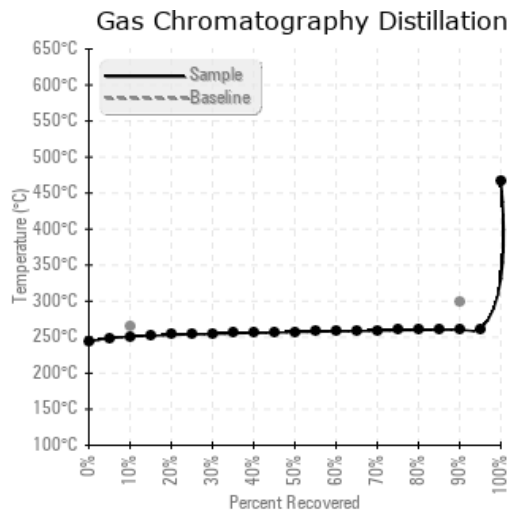
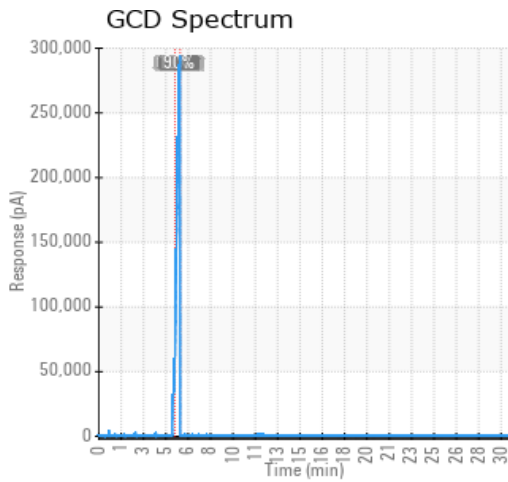
Sample Date	Received Date	Fluid Age	Sample Location	Flash Point (COC)	Water (KF)	Viscosity (40°C)	Acid Number	Solids	GCD 10%	GCD 50%	GCD 90%	GCD % < 335°C
	mm/dd/yy			°F/°C	ppm	cSt	mg/KOH/g	%wt	°F/°C	°F/°C	°F/°C	%
06/10/24	06/21/24	0.0m		255 / 124	351	2.5	0.01	0.068	483 / 251	495 / 257	501 / 261	97.86
Baseline Data				275 / 135		2.7	0.27		507 / 264		570 / 299	





Sample Date	Iron	Chromium	Nickel	Aluminum	Copper	Lead	Tin	Cadmium	Silver	Vanadium	Silicon	Sodium	Potassium	Titanium	Molybdenum	Antimony	Manganese	Lithium	Boron	Magnesium	Calcium	Barium	Phosphorus	Zinc	
06/10/24	3	0	0	0	0	0	0	0	0	0	2	0	1	0	0	0	0	0	0	0	0	0	0	1	4
Baseline Data			0	0						0			0	0					0				0		

Elemental analysis results (above) in parts per million (ppm). [10,000 ppm = 1.0%]



Historical Comments	

WearCheck Canada makes no representation or warranty of any kind, either express or implied, as to the accuracy or completeness of the analysis and assumes no responsibility and shall have no liability whatsoever with respect to such analysis, or a party's use of it.