

[SYNLUBE (THAILAND)] KORAT FP4 THAILAND

Customer: PTRHTF60010
 SYNLUBE INTERNATIONAL CO LTD
 76/1 MOO.7 THACHIN
 MUANG SAMUTSAKHON, 74000 TH
 Attn: CHERNPORN CHOBKUI
 Tel: 034421290
 E-Mail: chernporn@synlube.co.th

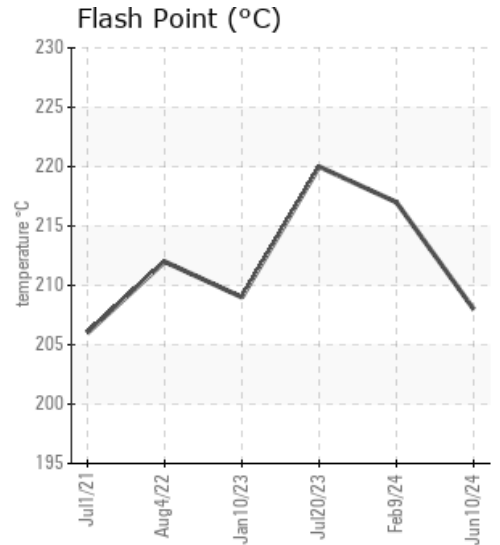
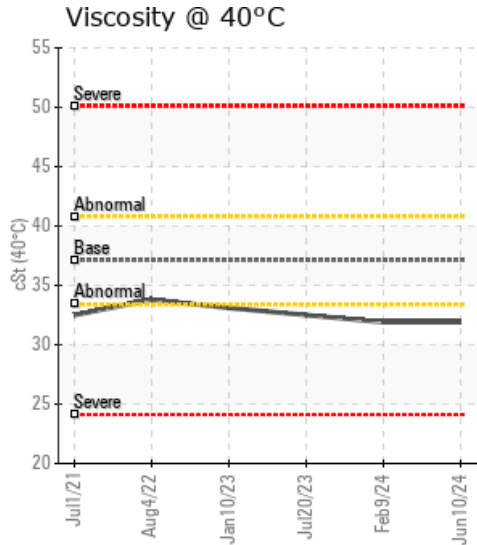
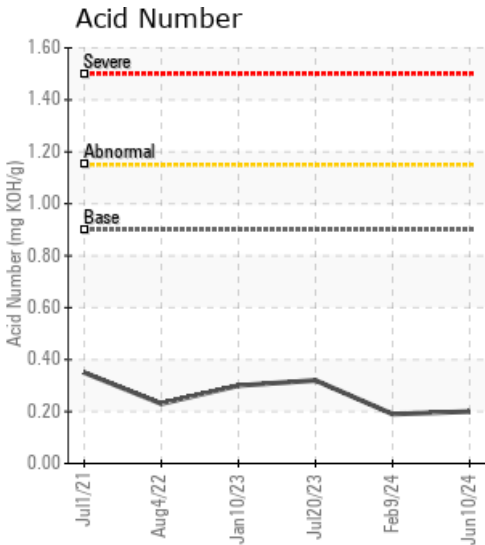
System Information
 System Volume: 20910 ltr
 Bulk Operating Temp: 554F / 290C
 Heating Source:
 Blanket:
 Fluid: PETRO CANADA PURITY FG HEAT TRANSFER FLUID
 Make: GETABAC

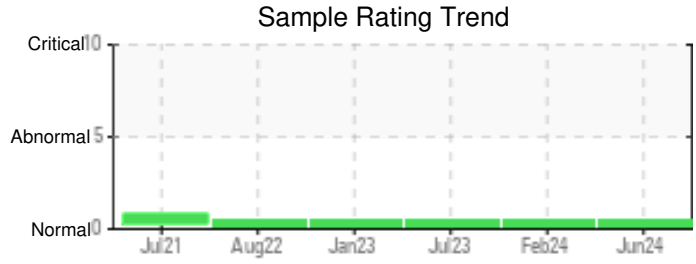
Sample Information
 Lab No: 02643541
 Analyst: Bill Quesnel CLS,OMA II,MLA-III,LLA-I
 Sample Date: 06/10/24
 Received Date: 06/21/24
 Completed: 06/26/24
 Bill Quesnel CLS,OMA II,MLA-III,LLA-I

Recommendation: The fluid is suitable for further service. Resample at the next service interval to monitor.

Comments:

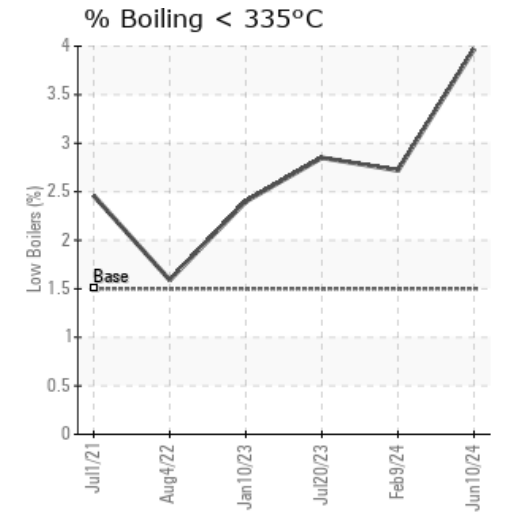
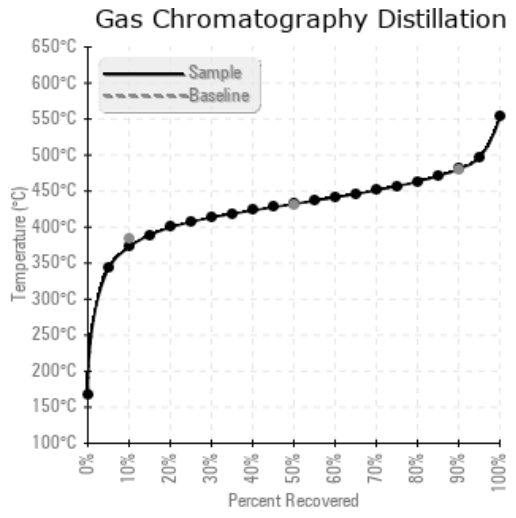
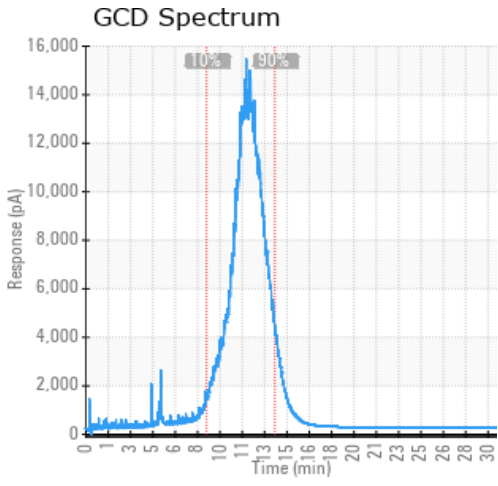
Sample Date	Received Date	Fluid Age	Sample Location	Flash Point (COC)	Water (KF)	Viscosity (40°C)	Acid Number	Solids	GCD 10%	GCD 50%	GCD 90%	GCD % < 335°C
	mm/dd/yy			°F/°C	ppm	cSt	mg/KOH/g	%wt	°F/°C	°F/°C	°F/°C	%
06/10/24	06/21/24	76.0m		406 / 208	17	31.9	0.20	0.070	703 / 373	810 / 432	897 / 480	3.97
02/09/24	02/27/24	76.0m		423 / 217	45	31.9	0.19	0.047	716 / 380	813 / 434	907 / 486	2.72
07/20/23	08/08/23	69.0m	Hot 1,2	428 / 220	28.2	32.5	0.32	0.062	714 / 379	811 / 433	896 / 480	2.85
01/10/23	02/27/23	63.0m		408 / 209	4.5	33.1	0.30	0.040	718 / 381	812 / 434	895 / 479	2.40
08/04/22	08/22/22	58.0m	HOT 1 2 SUPPLY RETRNR	414 / 212	26.8	33.8	0.23	0.059	722 / 384	812 / 433	895 / 479	1.59
Baseline Data				459 / 237		37.12	0.90		721 / 383	807 / 431	892 / 478	1.5





Sample Date	Iron	Chromium	Nickel	Aluminum	Copper	Lead	Tin	Cadmium	Silver	Vanadium	Silicon	Sodium	Potassium	Titanium	Molybdenum	Antimony	Manganese	Lithium	Boron	Magnesium	Calcium	Barium	Phosphorus	Zinc
06/10/24	73	0	0	0	0	0	0	0	0	0	0	0	1	0	0	0	0	0	0	0	0	0	20	3
02/09/24	80	0	0	0	0	0	0	0	0	0	0	0	0	0	0	0	0	0	0	0	0	0	17	2
07/20/23	103	0	0	0	0	1	0	0	0	0	0	0	0	0	0	0	1	0	0	0	0	0	22	4
01/10/23	67	0	0	0	0	0	0	0	0	0	0	0	0	0	0	0	0	0	0	0	0	0	17	2
08/04/22	72	0	0	0	0	0	0	0	0	0	0	0	0	0	0	0	0	0	0	0	0	0	17	2
Baseline Data			0	0						0			0	0				0	0				230	

Elemental analysis results (above) in parts per million (ppm). [10,000 ppm = 1.0%]



Historical Comments	
02/09/24	The fluid is suitable for further service. Resample at the next service interval to monitor.
07/20/23	The fluid is suitable for further service. Resample at the next service interval to monitor.
01/10/23	Fluid parameters suitable for service. Resample at the next service interval to monitor.
08/04/22	Fluid parameters suitable for service. Resample at the next service interval to monitor.

Petro-Canada makes no representation or warranty of any kind, either express or implied, as to the accuracy or completeness of the analysis and assumes no responsibility and shall have no liability whatsoever with respect to such analysis, or a party's use of it. Petro-Canada is a division of HollyFrontier Corporation.