

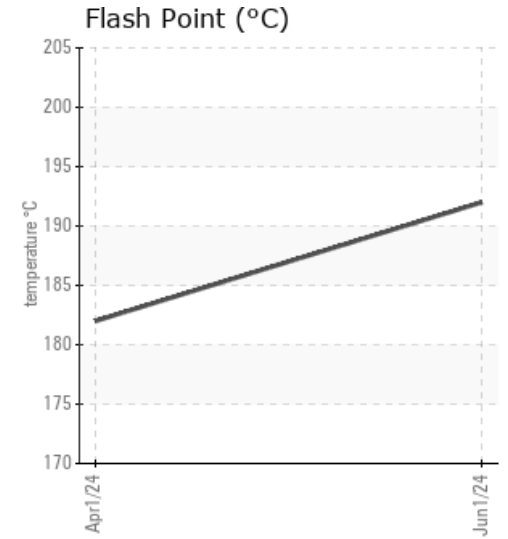
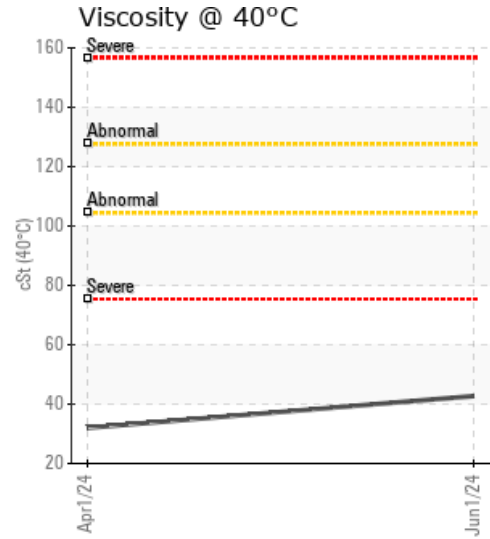
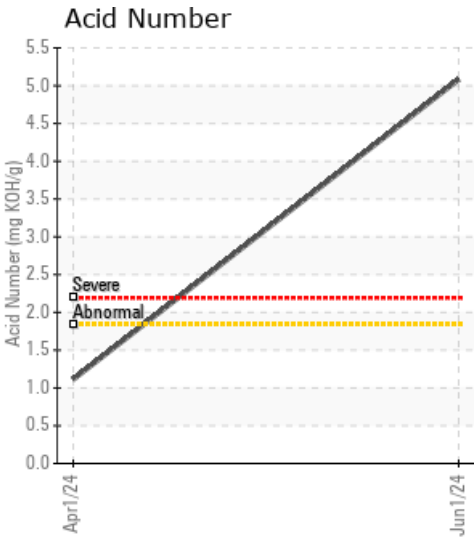
CFP THAILAND

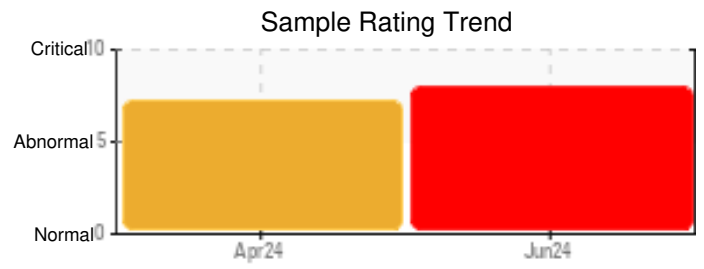
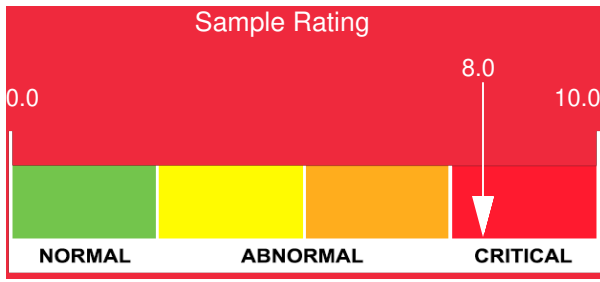
Customer: PTRHTF60010	System Information	Sample Information
SYNLUBE INTERNATIONAL CO LTD 76/1 MOO.7 THACHIN MUANG SAMUTSAKHON, 74000 TH Attn: CHERNPORN CHOBKUI Tel: 034421290 E-Mail: chernporn@synlube.co.th	System Volume: 14000 ltr Bulk Operating Temp: 554F / 290C Heating Source: Blanket: Fluid: N/A Make:	Lab No: 02643544 Analyst: Bill Quesnel CLS,OMA II,MLA-III,LLA-I Sample Date: 06/01/24 Received Date: 06/21/24 Completed: 06/26/24 Bill Quesnel CLS,OMA II,MLA-III,LLA-I

Recommendation: Suggest investigating cost of changing fluid vs heating efficiency as viscosity has increased substantially and will be lowering heating efficiency. Fluid is severely degraded (high TAN, GCD 90% and Pentane Insolubles). Check for source of calcium contamination. Recommend resampling in 3 months to monitor.

Comments: Iron ppm levels are abnormal. Pentane Insolubles levels are severely high. Acid Number (AN) is severely high. (GCD) 90% Distillation Point is severe. Calcium ppm levels are abnormally high. Viscosity abnormally high.

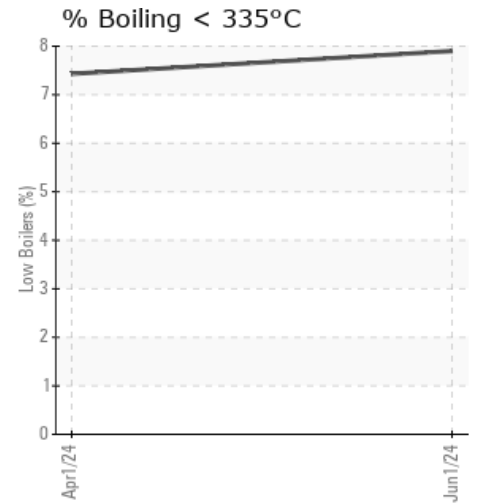
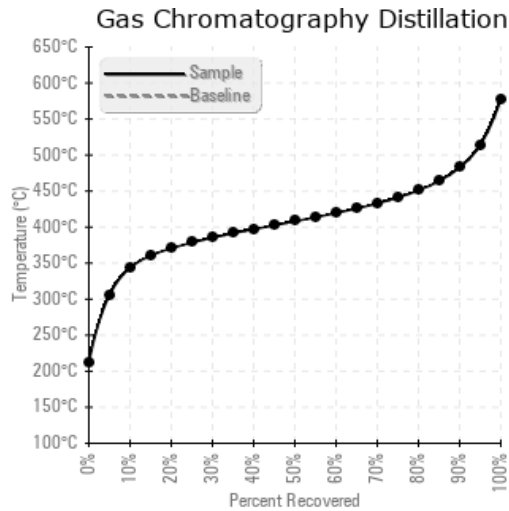
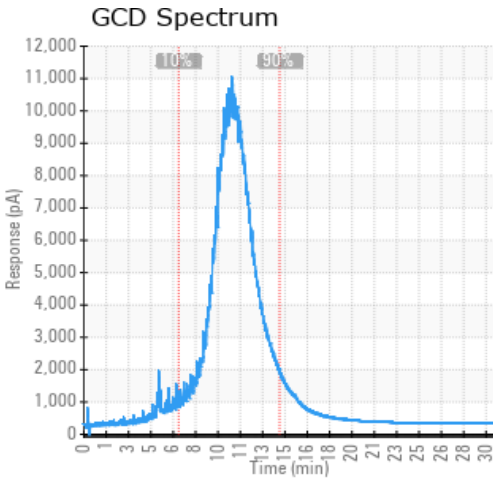
Sample Date	Received Date	Fluid Age	Sample Location	Flash Point (COC)	Water (KF)	Viscosity (40°C)	Acid Number	Solids	GCD 10%	GCD 50%	GCD 90%	GCD % < 335°C
	mm/dd/yy			°F/°C	ppm	cSt	mg/KOH/g	%wt	°F/°C	°F/°C	°F/°C	%
06/01/24	06/21/24	6.0y		378 / 192	315	42.7	5.08	5.98	650 / 344	766 / 408	900 / 482	7.90
04/01/24	06/21/24	6.0y		360 / 182	95	32.0	1.11	2.58	655 / 346	768 / 409	902 / 484	7.43
Baseline Data				32 / 0								





Sample Date	Iron	Chromium	Nickel	Aluminum	Copper	Lead	Tin	Cadmium	Silver	Vanadium	Silicon	Sodium	Potassium	Titanium	Molybdenum	Antimony	Manganese	Lithium	Boron	Magnesium	Calcium	Barium	Phosphorus	Zinc
06/01/24	306	2	0	0	0	0	0	0	0	0	2	2	1	0	0	0	4	0	0	1	384	0	0	2
04/01/24	136	1	0	0	0	0	0	0	0	0	0	0	0	0	0	0	1	0	0	0	0	0	0	2
Baseline Data													0						0				0	

Elemental analysis results (above) in parts per million (ppm). [10,000 ppm = 1.0%]



Historical Comments

04/01/24	

Petro-Canada makes no representation or warranty of any kind, either express or implied, as to the accuracy or completeness of the analysis and assumes no responsibility and shall have no liability whatsoever with respect to such analysis, or a party's use of it. Petro-Canada is a division of HollyFrontier Corporation.