

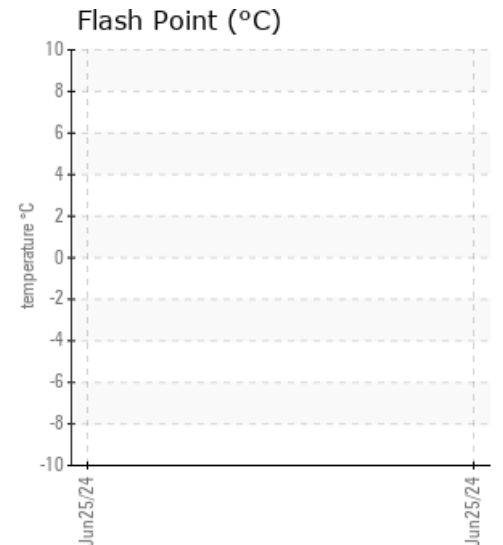
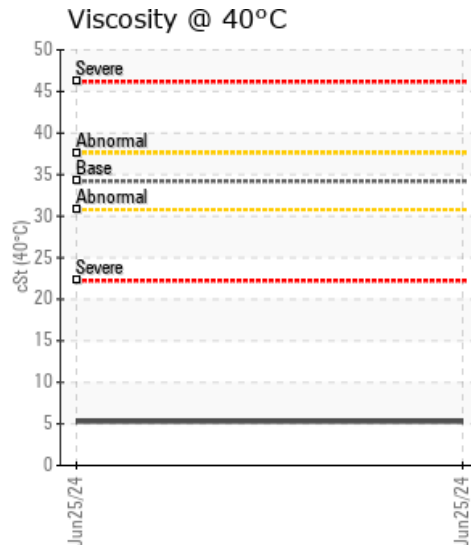
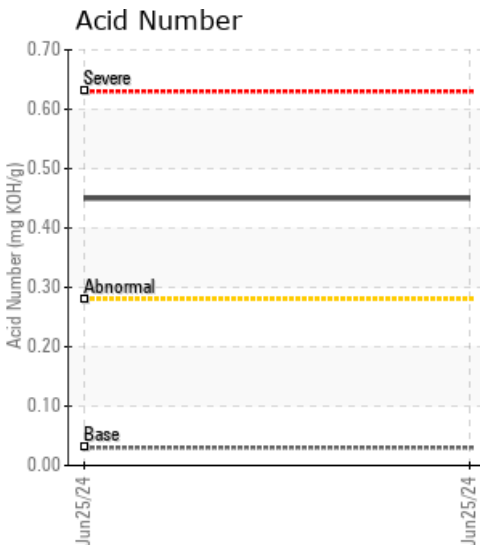
[9-10-74-11W6] OLD BOILER

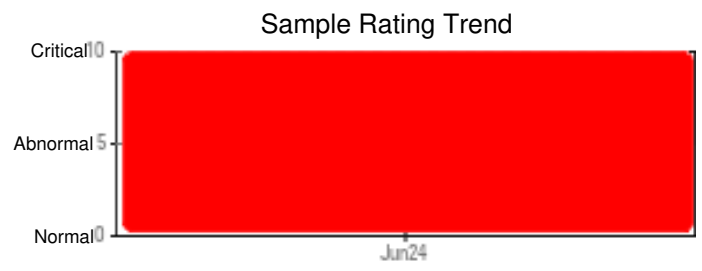
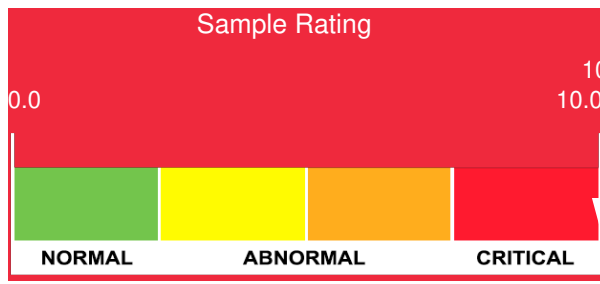
Customer:	System Information	Sample Information
WEARCHECK CANADA INC. C8-1175 Appleby Line BURLINGTON, ON L7L 5H9 CA Attn: Dorian Anderson Tel: E-Mail: dorian.anderson@wearcheck.com	System Volume: ltr Bulk Operating Temp: Not Specified Heating Source: Blanket: Fluid: PETRO CANADA PETRO-THERM Make:	Lab No: 02645056 Analyst: Bill Quesnel CLS,OMA II,MLA-III,LLA-I Sample Date: 06/25/24 Received Date: 07/02/24 Completed: 07/11/24 Bill Quesnel CLS,OMA II,MLA-III,LLA-I

Recommendation: *** NOTE: GCD/SimDis values askew due to high water content ***

Comments: Water contamination levels are severely high. Water contamination levels are severely high.. ppm Water contamination levels are severely high. Potassium ppm levels are abnormally high. (GCD) % < 335°C is severely high. (GCD) 10% Distillation Point is severely low. (GCD) 50% Distillation Point is severely low. (GCD) 90% Distillation Point is severely low. Visc @ 40°C is severely low. Acid Number (AN) is abnormally high.

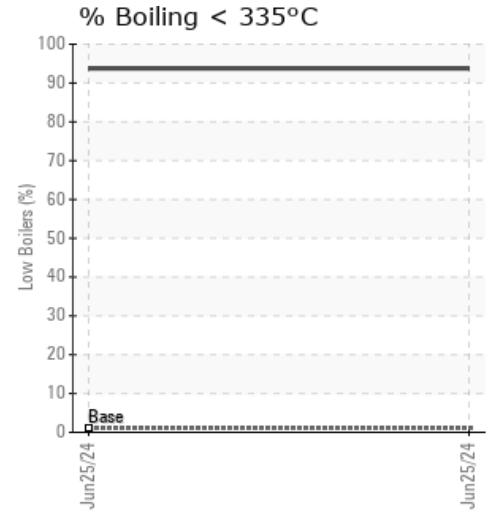
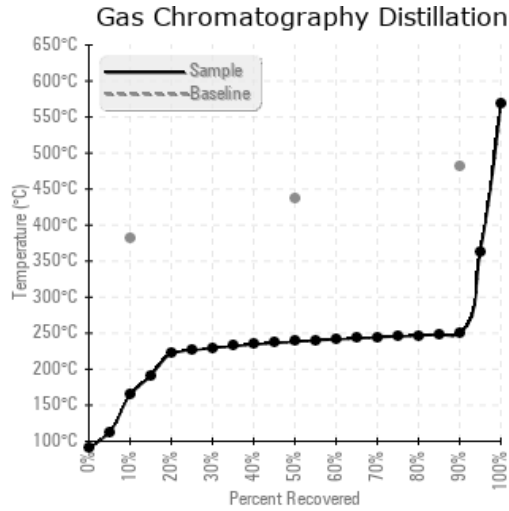
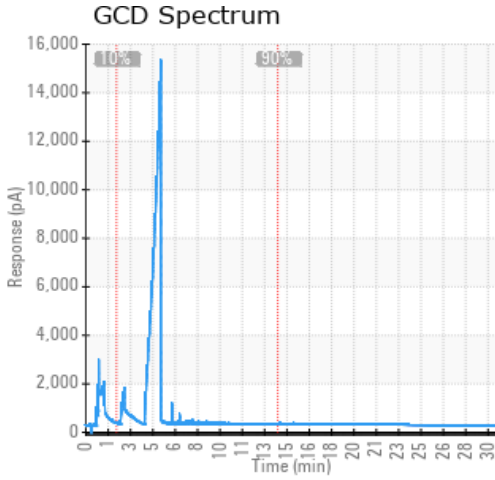
Sample Date	Received Date	Fluid Age	Sample Location	Flash Point (COC)	Water (KF)	Viscosity (40°C)	Acid Number	Solids	GCD 10%	GCD 50%	GCD 90%	GCD % < 335°C
	mm/dd/yy			°F/°C	ppm	cSt	mg/KOH/g	%wt	°F/°C	°F/°C	°F/°C	%
06/25/24	07/02/24	30.0y	old sask. boiler		384690	5.3	0.45		328 / 164	461 / 238	480 / 249	93.73
Baseline Data				433 / 223		34.2	0.03		720 / 382	817 / 436	900 / 482	1.00





Sample Date	Iron	Chromium	Nickel	Aluminum	Copper	Lead	Tin	Cadmium	Silver	Vanadium	Silicon	Sodium	Potassium	Titanium	Molybdenum	Antimony	Manganese	Lithium	Boron	Magnesium	Calcium	Barium	Phosphorus	Zinc
06/25/24	6	0	0	0	0	0	0	0	0	0	0	10	22	0	0	0	0	0	7	0	0	0	0	0
Baseline Data			0	0						0			0	0					0				0	

Elemental analysis results (above) in parts per million (ppm). [10,000 ppm = 1.0%]



Historical Comments

WearCheck Canada makes no representation or warranty of any kind, either express or implied, as to the accuracy or completeness of the analysis and assumes no responsibility and shall have no liability whatsoever with respect to such analysis, or a party's use of it.