

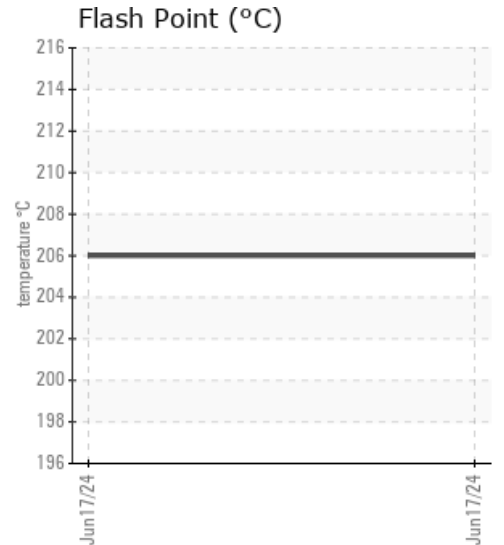
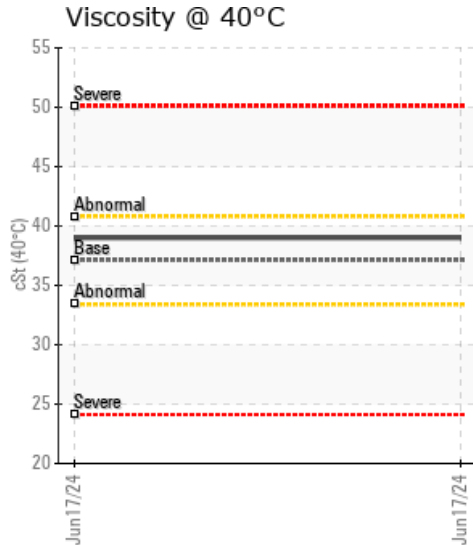
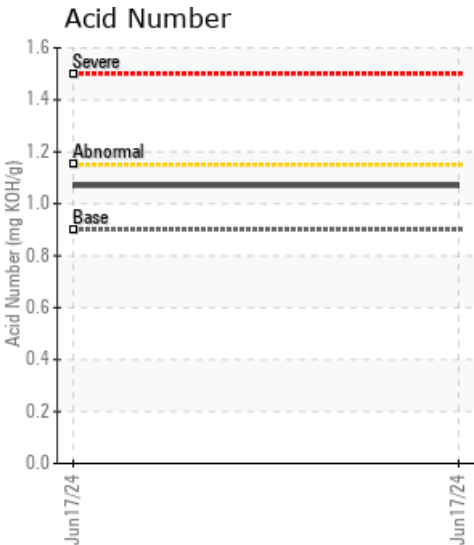
## PELETE AURA

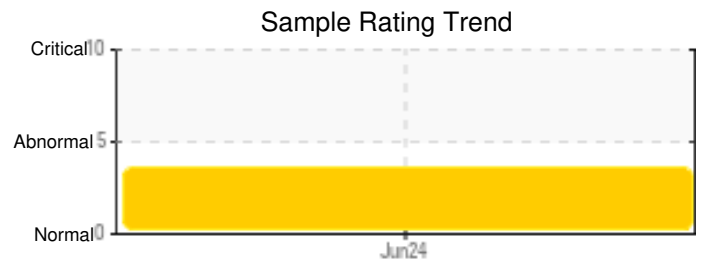
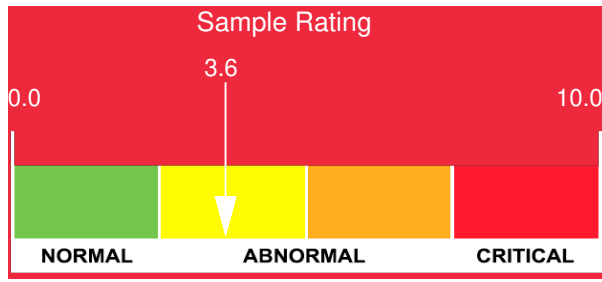
Customer: PTRHTF60088	System Information	Sample Information
SC INTERSNACK ROMANIA SRL SFR AVIOTORILOR, N.20 Ghimbav, 507075 RO Attn: Daniel Cosarca Tel: 073152053 E-Mail: daniel.cosarca@intersanck.ro	System Volume: 1231 ltr Bulk Operating Temp: 545F / 285C Heating Source: Blanket: Fluid: PETRO CANADA PURITY FG HEAT TRANSFER FLUID Make:	Lab No: 02645341 Analyst: Bill Quesnel CLS,OMA II,MLA-III,LLA-I Sample Date: 06/17/24 Received Date: 07/03/24 Completed: 07/11/24 Bill Quesnel CLS,OMA II,MLA-III,LLA-I

Recommendation: We recommend that you vent the expansion tank to remove low boilers which assists in restoring the flash point of the fluid. The fluid is suitable for further service. Resample at the next service interval to monitor.

Comments: (GCD) 10% Distillation Point is abnormally low. (GCD) % < 335°C is marginally high. COC Flash Point is marginally low.

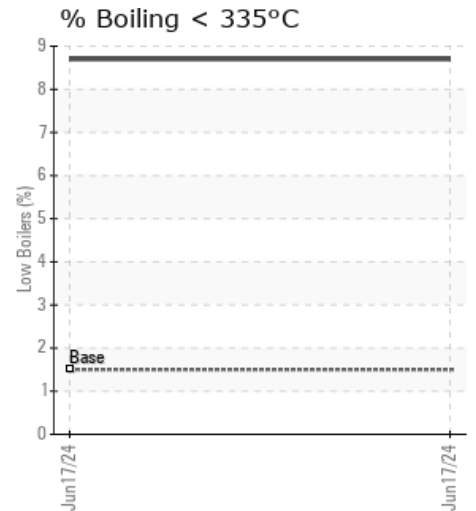
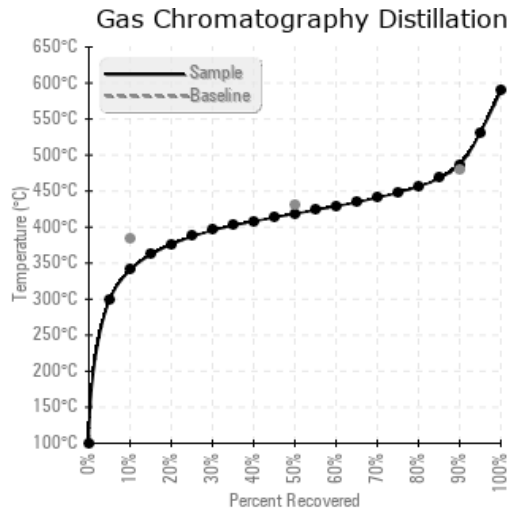
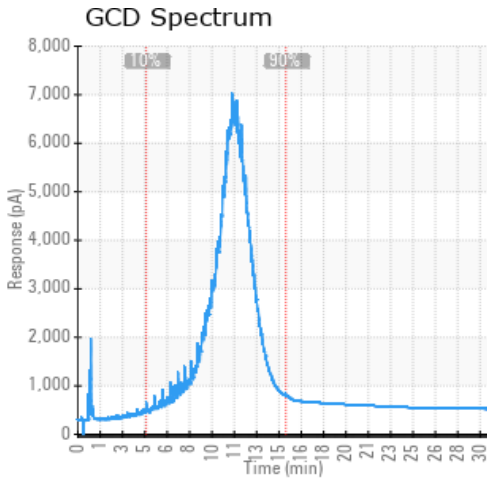
Sample Date	Received Date	Fluid Age	Sample Location	Flash Point (COC)	Water (KF)	Viscosity (40°C)	Acid Number	Solids	GCD 10%	GCD 50%	GCD 90%	GCD % < 335°C
	mm/dd/yy			°F/°C	ppm	cSt	mg/KOH/g	%wt	°F/°C	°F/°C	°F/°C	%
06/17/24	07/03/24	7.0y		403 / 206	38	39.0	1.07	0.359	644 / 340	785 / 419	907 / 486	8.70
Baseline Data				459 / 237		37.12	0.90		721 / 383	807 / 431	892 / 478	1.5





Sample Date	Iron	Chromium	Nickel	Aluminum	Copper	Lead	Tin	Cadmium	Silver	Vanadium	Silicon	Sodium	Potassium	Titanium	Molybdenum	Antimony	Manganese	Lithium	Boron	Magnesium	Calcium	Barium	Phosphorus	Zinc
06/17/24	0	0	0	0	0	0	0	0	0	0	0	0	0	0	0	0	0	0	0	0	0	0	15	0
Baseline Data			0	0						0			0	0				0	0				230	

Elemental analysis results (above) in parts per million (ppm). [10,000 ppm = 1.0%]



### Historical Comments


Petro-Canada makes no representation or warranty of any kind, either express or implied, as to the accuracy or completeness of the analysis and assumes no responsibility and shall have no liability whatsoever with respect to such analysis, or a party's use of it. Petro-Canada is a division of HollyFrontier Corporation.