

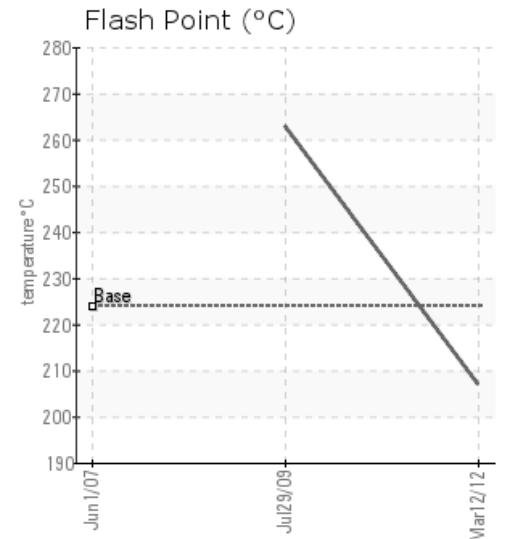
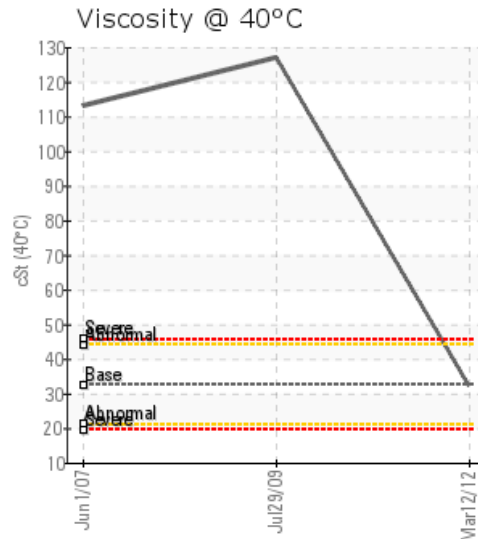
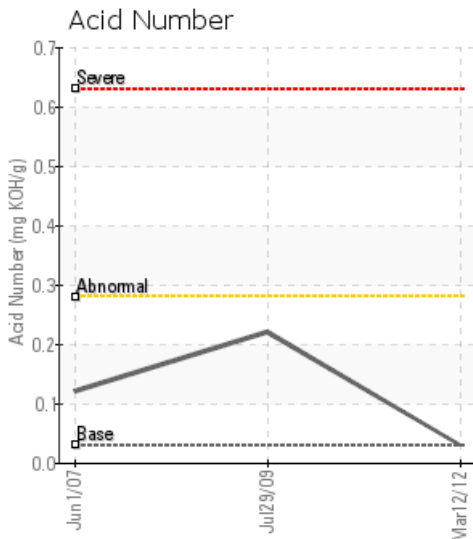
## MAIN SYSTEM

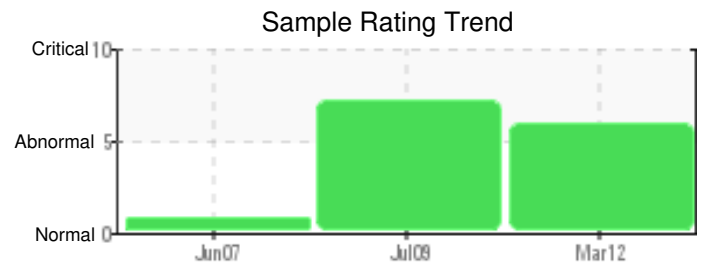
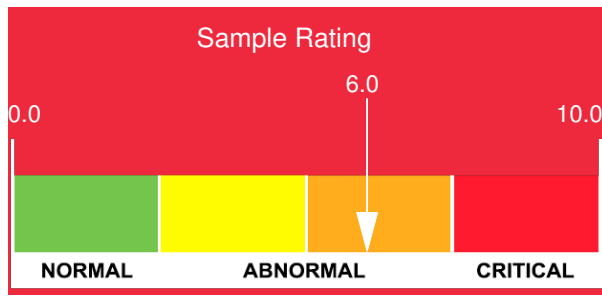
Customer: PTRHTF10035	System Information	Sample Information
CERTAINTEED - SAINT GOBAIN 2701 E. ROOSEVELT RD LITTLE ROCK, AR 72206 USA Attn: MICHAEL MCNULTY Tel: (501)375-9173 E-Mail: michael.e.mcnulty@saint-gobain.com	System Volume: 2600 gal Bulk Operating Temp: 500F / 260C Heating Source: Blanket: Fluid: PETRO CANADA CALFLO AF Make: HEATEC	Lab No: I-635169 Analyst: Gaston Arseneault Sample Date: 03/12/12 Received Date: 03/19/12 Completed: 03/28/12 To discuss this report contact Gaston Arseneault at 973-986-6503

Recommendation: This is the first sample since the big clean up in 2010. The oil appears relatively good, viscosity and Total Acid Number being normal. We see a certain amount of calcium, which could come from detergents from the pre-cleaner used in the operation. Although the solids contamination is also high which could indicate the calcium may come from airborne dust from your filler pile. We will send a reminder in December to re-sample.

Comments: Water is at a MINOR LEVEL. GRAVIMETRIC SOLIDS is SIGNIFICANTLY HIGH (CAUTION LEVEL - 3) Simulated distillation 10% boiling point is moderately low. Simulated distillation 90% boiling point is severely high. The amount of low boilers is at a moderate level, characterizing the level of thermal degradation or possible dilution with a lighter oil (if applicable).

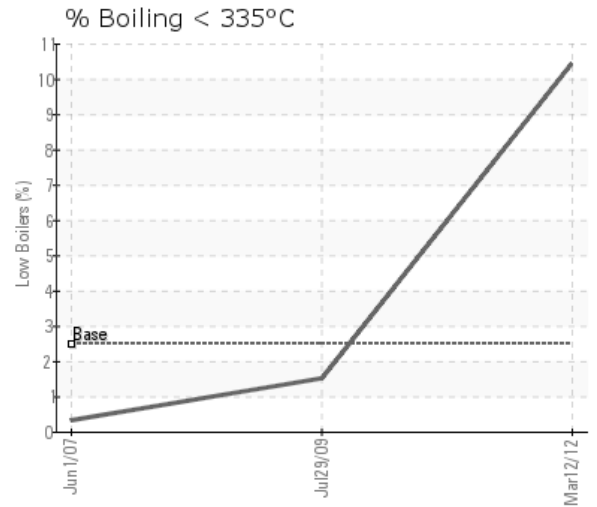
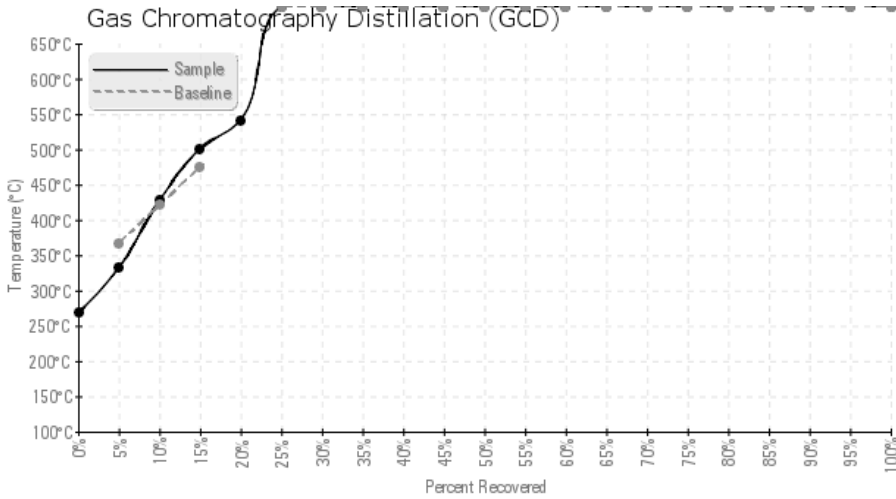
Sample Date	Received Date	Fluid Age	Sample Location	Flash Point (COC)	Water (KF)	Viscosity (40°C)	Acid Number	Solids	GCD 10%	GCD 50%	GCD 90%	GCD % < 335°C
	mm/dd/yy			°F/°C	ppm	cSt	mg/KOH/g	%wt	°F/°C	°F/°C	°F/°C	%
03/12/12	03/19/12	14h	ML TANK 3 PORT	405 / 207	211	32.3	0.03	0.456	629 / 332	802 / 428	934 / 501	10.43
07/29/09	07/29/09	12h		505 / 263	155	127	0.22	0.14	806 / 430		1044 / 562	1.5
06/01/07	06/01/07	10h			233	113	0.12					0.3
Baseline Data				435 / 224		32.7	0.03		693 / 367	790 / 421	887 / 475	2.5





Sample Date	Iron	Chromium	Nickel	Aluminum	Copper	Lead	Tin	Cadmium	Silver	Vanadium	Silicon	Sodium	Potassium	Titanium	Molybdenum	Antimony	Manganese	Lithium	Boron	Magnesium	Calcium	Barium	Phosphorus	Zinc
03/12/12	22	0	0	0	0	4	0	197	0	0	1	0	0	0	0	0	0	0	7	0	197	0	111	0
07/29/09	127	0	0	0	1	0	2	19	0	0	0	4		0	0		1			2	19	0	34	0
06/01/07																								
Baseline Data			0	0						0			0	0					0				270	

Elemental analysis results (above) in parts per million (ppm). [10,000 ppm = 1.0%]



### Historical Comments

07/29/09	
06/01/07	

Petro-Canada makes no representation or warranty of any kind, either express or implied, as to the accuracy or completeness of the analysis and assumes no responsibility and shall have no liability whatsoever with respect to such analysis, or a party's use of it. Petro-Canada is a division of HollyFrontier Corporation.