

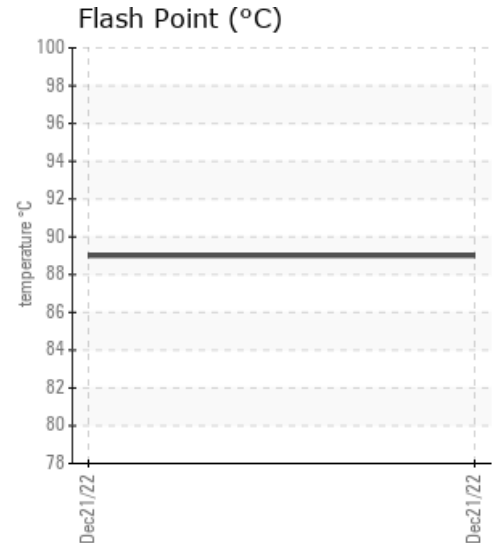
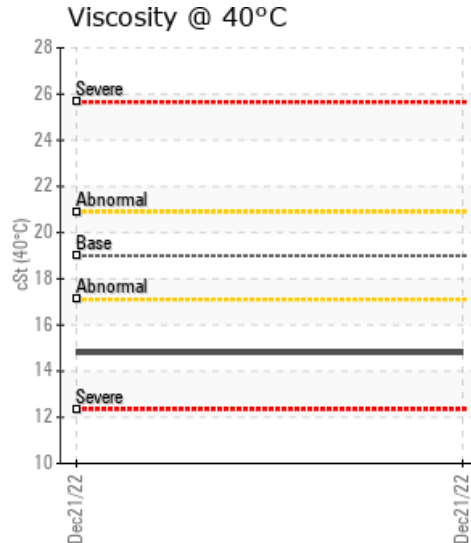
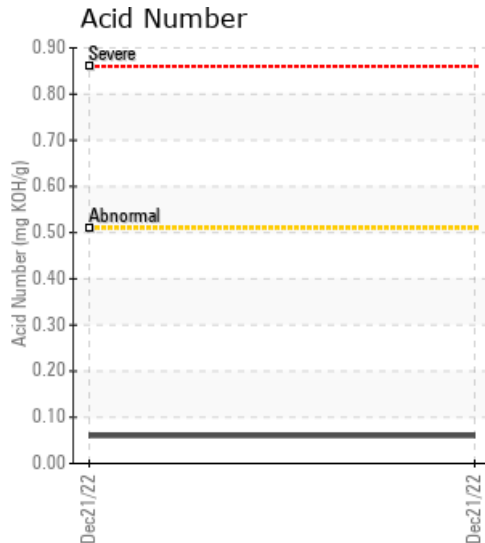
## THERMINOL 55 USED

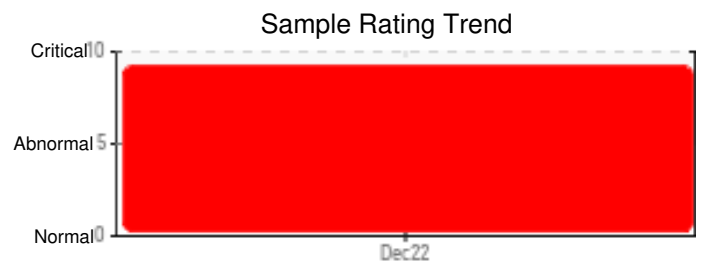
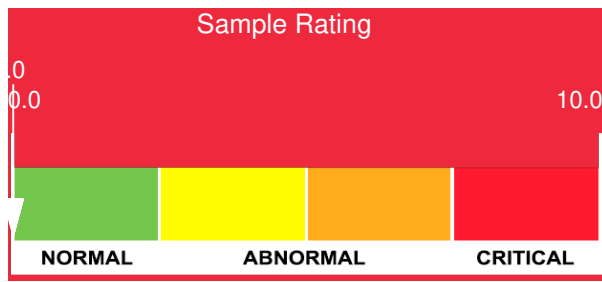
Customer:	System Information	Sample Information
TULCO OILS INC (006-NATIONAL DIVISI... 5240 EAST PINE TULSA, OK 74115 US Attn: MIKE HANN Tel: (800)375-2347 E-Mail:	System Volume: 0 gal Bulk Operating Temp: Not Specified Heating Source: Blanket: Fluid: EASTMAN THERMINOL 55 Make:	Lab No: 05724091 Analyst: Doug Bogart Sample Date: 12/21/22 Received Date: 12/22/22 Completed: 01/05/23 Doug Bogart doug@wearcheckusa.com

Recommendation: We recommend that you vent the expansion tank to remove low boilers which assists in restoring the flash point of the fluid. We recommend an early resample to monitor this condition. Test(s) for distillation and flash point performed at WearCheck Canada. COC reading is actually PMCC.

Comments: {not applicable} There is no indication of any contamination in the fluid. (GCD) % < 335°C is severely high. (GCD) 10% Distillation Point is severely low. (GCD) 90% Distillation Point is severely low. Pensky-Martens Flash Point is abnormally low.

Sample Date	Received Date	Fluid Age	Sample Location	Flash Point (COC)	Water (KF)	Viscosity (40°C)	Acid Number	Solids	GCD 10%	GCD 50%	GCD 90%	GCD % < 335°C
	mm/dd/yy			°F/°C	ppm	cSt	mg/KOH/g	%wt	°F/°C	°F/°C	°F/°C	%
12/21/22	12/22/22	0.0h		192 / 89	106.1	14.8	0.06		562 / 295	722 / 383	835 / 446	19.17
Baseline Data				351 / 177		19			655 / 346		790 / 421	3.40

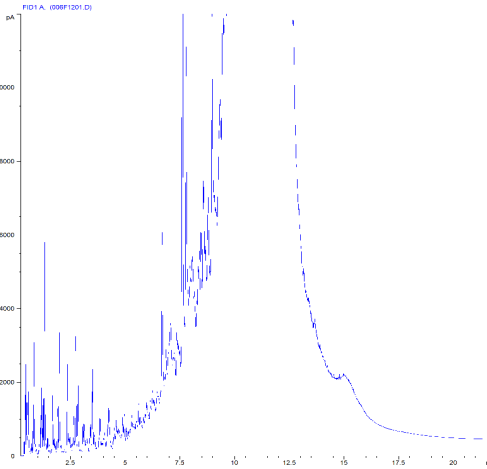




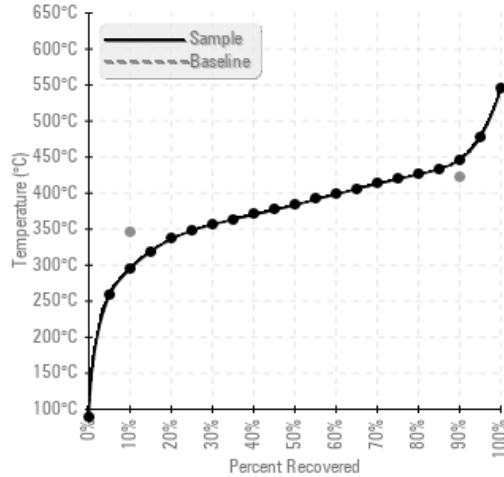
Sample Date	Iron	Chromium	Nickel	Aluminum	Copper	Lead	Tin	Cadmium	Silver	Vanadium	Silicon	Sodium	Potassium	Titanium	Molybdenum	Antimony	Manganese	Lithium	Boron	Magnesium	Calcium	Barium	Phosphorus	Zinc
12/21/22	0	0	0	0	0	0	0	0	0	0	6	0	0	0	0		0		0	0	0	0	0	0
Baseline Data			0	0						0			0	0				0	0				0	

Elemental analysis results (above) in parts per million (ppm). [10,000 ppm = 1.0%]

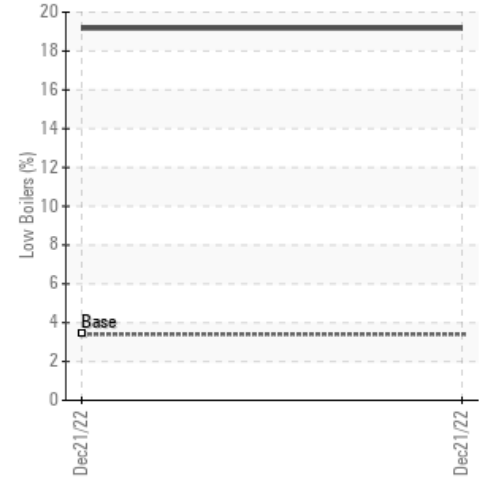
#### GCD Spectrum



#### Gas Chromatography Distillation



#### % Boiling < 335°C



#### Historical Comments
