

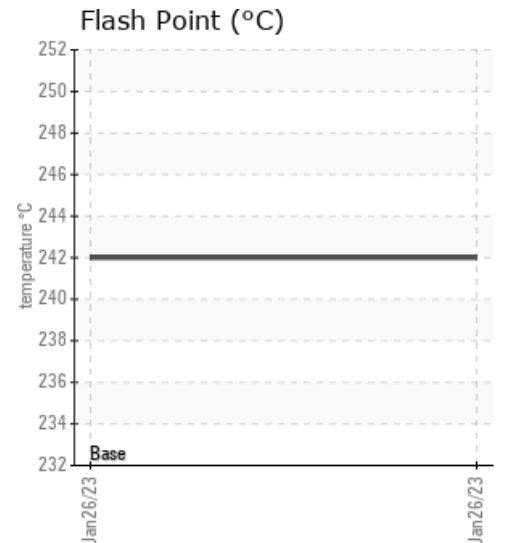
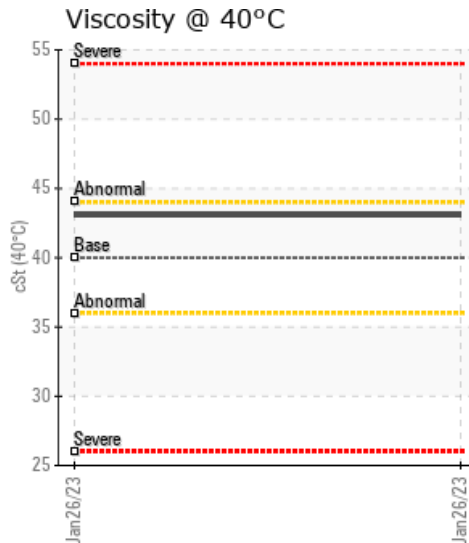
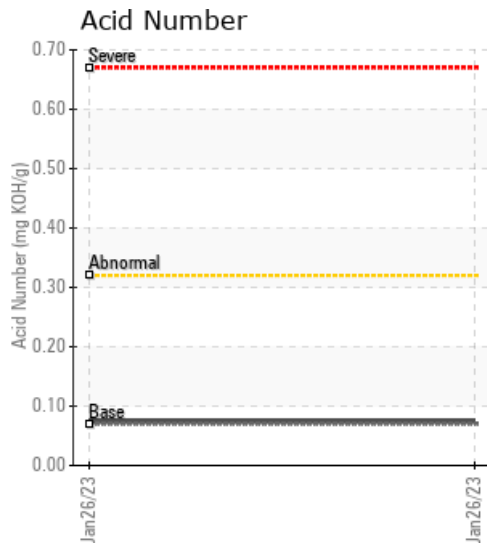
SUN HTO 21 REFERENCE

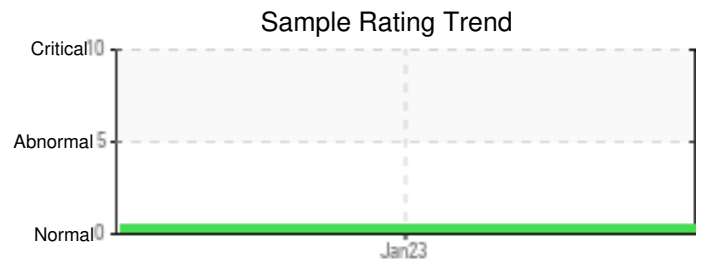
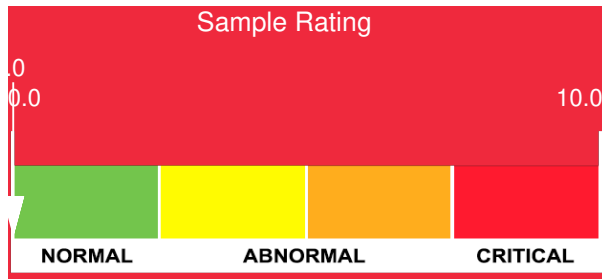
Customer:	System Information	Sample Information
ADVANCED LUBRICATION SPECIALTIES 420 IMPERIAL COURT BENSALEM, PA 19020 USA Attn: DAVID ADELMAN Tel: (866)891-5823 E-Mail: dadelman@advancedlubes.com	System Volume: 0 gal Bulk Operating Temp: Not Specified Heating Source: Blanket: Fluid: SUNOCO HTO 21 Make:	Lab No: 05754420 Analyst: Doug Bogart Sample Date: 01/26/23 Received Date: 01/30/23 Completed: 02/07/23 Doug Bogart doug@wearcheckusa.com

Recommendation: This is a baseline read-out on the submitted sample. Gas Chromatography for distillation data and insolubles performed at WearCheck Canada.

Comments: {not applicable} There is no indication of any contamination in the fluid. The condition of the fluid is suitable for further service.

Sample Date	Received Date	Fluid Age	Sample Location	Flash Point (COC)	Water (KF)	Viscosity (40°C)	Acid Number	Solids	GCD 10%	GCD 50%	GCD 90%	GCD % < 335°C
	mm/dd/yy			°F/°C	ppm	cSt	mg/KOH/g	%wt	°F/°C	°F/°C	°F/°C	%
01/26/23	01/30/23	0.0h		468 / 242	60.2	43.07	0.074	0.215	765 / 407	841 / 449	919 / 493	0.73
Baseline Data				437 / 225		40	0.07		765 / 407	840 / 449	919 / 493	0.73

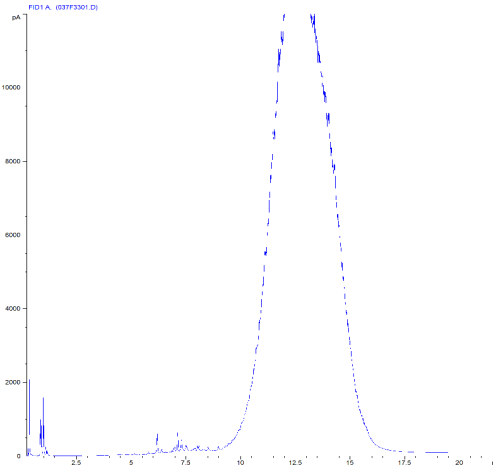




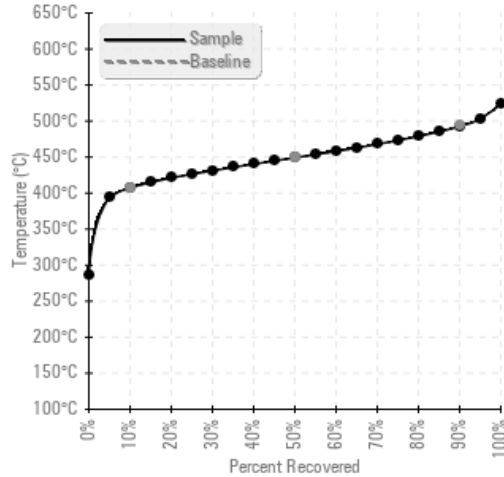
Sample Date	Iron	Chromium	Nickel	Aluminum	Copper	Lead	Tin	Cadmium	Silver	Vanadium	Silicon	Sodium	Potassium	Titanium	Molybdenum	Antimony	Manganese	Lithium	Boron	Magnesium	Calcium	Barium	Phosphorus	Zinc
01/26/23	0	0	0	0	0	0	0	0	0	0	0	0	0	0	0		0		0	0	0	0	44	0
Baseline Data			0	0						0			0	0				0	0				0	

Elemental analysis results (above) in parts per million (ppm). [10,000 ppm = 1.0%]

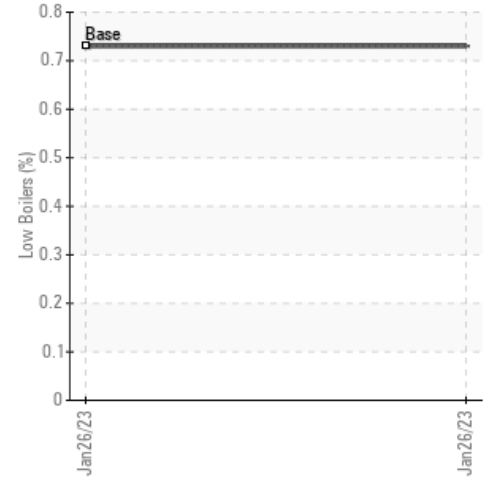
GCD Spectrum



Gas Chromatography Distillation



% Boiling < 335°C



Historical Comments

WearCheck Canada makes no representation or warranty of any kind, either express or implied, as to the accuracy or completeness of the analysis and assumes no responsibility and shall have no liability whatsoever with respect to such analysis, or a party's use of it.