

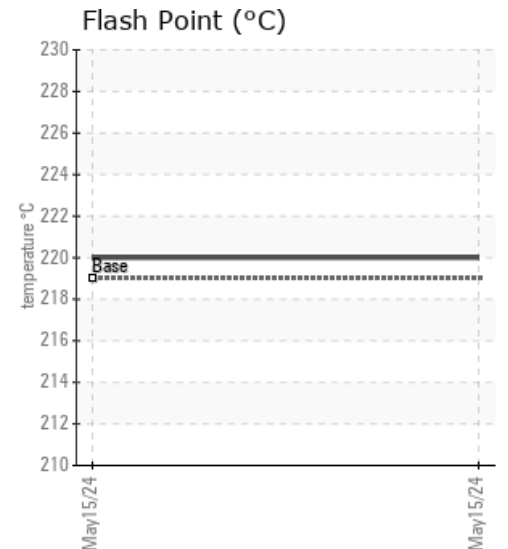
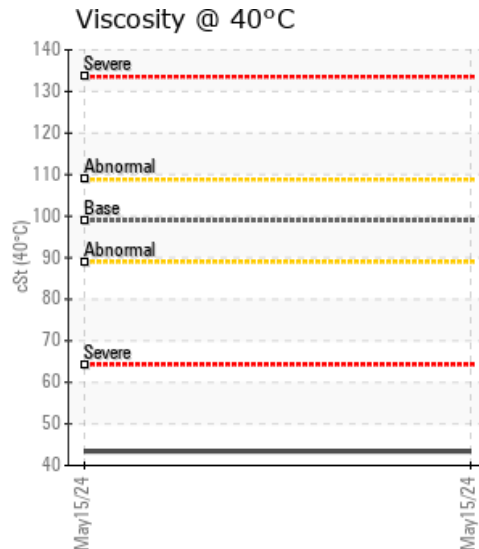
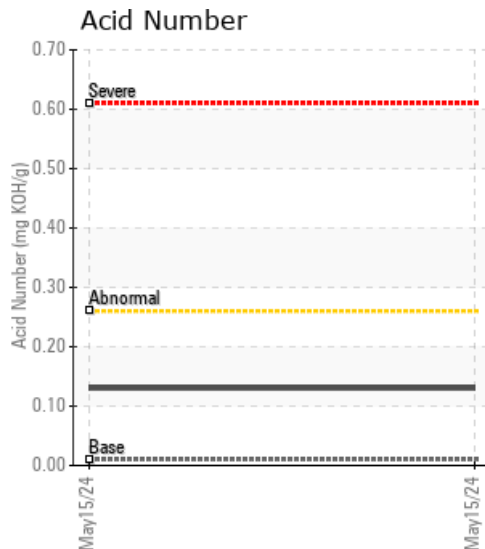
CNIC8-6-30

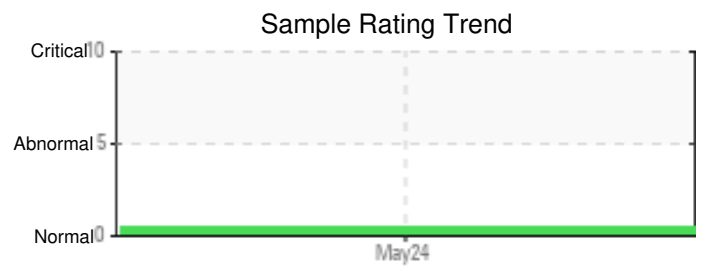
Customer:	System Information	Sample Information
ERGON - LAS VEGAS 3901 WEST PONDEROSA WAY LAS VEGAS, NV 89118 US Attn: MIKE HAAS Tel: E-Mail: Mike.Haas@ergon.com	System Volume: 0 gal Bulk Operating Temp: Not Specified Heating Source: Blanket: Fluid: ERGON HYGOLD L500 Make: AHE	Lab No: 06182338 Analyst: Doug Bogart Sample Date: 05/15/24 Received Date: 05/17/24 Completed: 06/11/24 Doug Bogart dougb@wearcheckusa.com

Recommendation: The viscosity has dropped significantly however this has not affected the flash point or simdis results. Suggest monitoring in 3 months to ensure viscosity does not continue to drop. All tests and evaluation performed at WearCheck Canada.

Comments: All component wear rates are normal. The water content is negligible. Barium ppm levels are abnormally high. Calcium ppm levels are abnormally high. Visc @ 40°C is abnormally low. Viscosity of sample indicates oil is within ISO 46 range, advise investigate. The AN level is acceptable for this fluid.

Sample Date	Received Date	Fluid Age	Sample Location	Flash Point (COC)	Water (KF)	Viscosity (40°C)	Acid Number	Solids	GCD 10%	GCD 50%	GCD 90%	GCD % < 335°C
	mm/dd/yy			°F/°C	ppm	cSt	mg/KOH/g	%wt	°F/°C	°F/°C	°F/°C	%
05/15/24	05/17/24	0.0h		428 / 220	37	43.4	0.13	0.472	692 / 367	805 / 429	913 / 490	4.29
Baseline Data				426 / 219		98.9	0.01		693 / 367	813 / 434	937 / 503	2.0

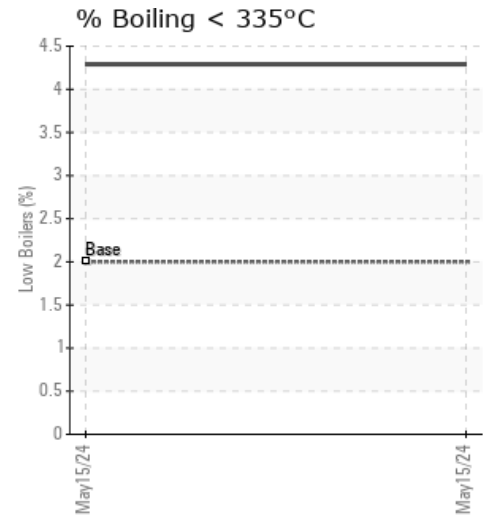
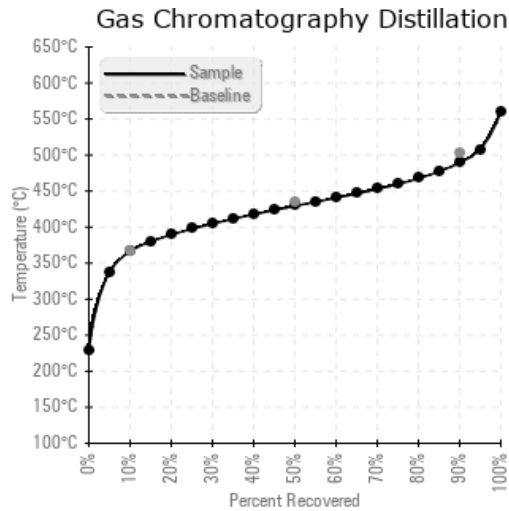




Sample Date	Iron	Chromium	Nickel	Aluminum	Copper	Lead	Tin	Cadmium	Silver	Vanadium	Silicon	Sodium	Potassium	Titanium	Molybdenum	Antimony	Manganese	Lithium	Boron	Magnesium	Calcium	Barium	Phosphorus	Zinc
05/15/24	0	0	0	0	0	0	0	0	0	0	0	0	0	0	0	0	0	0	0	0	44	28	0	0
Baseline Data			0	0						0			0	0				0	0				0	

Elemental analysis results (above) in parts per million (ppm). [10,000 ppm = 1.0%]

GCD Spectrum



Historical Comments
