

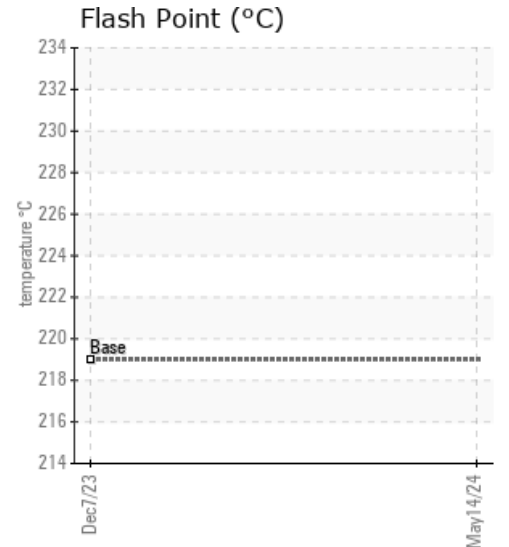
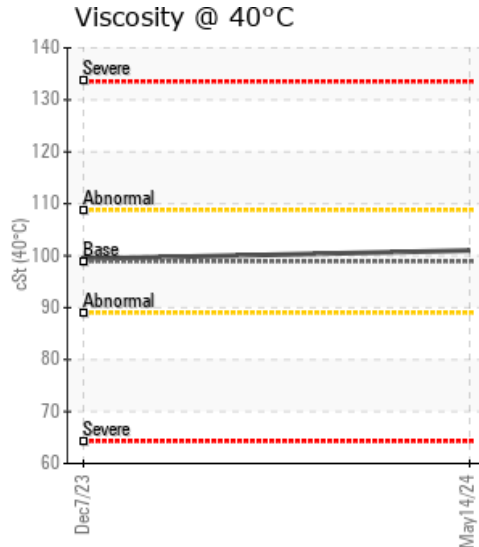
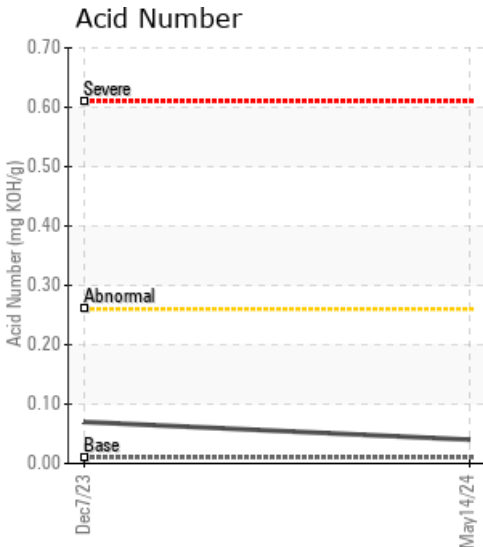
## WINTERFILL

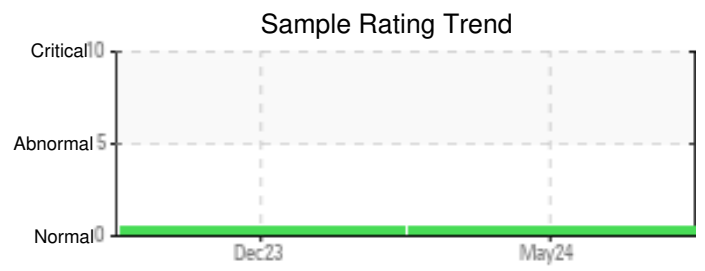
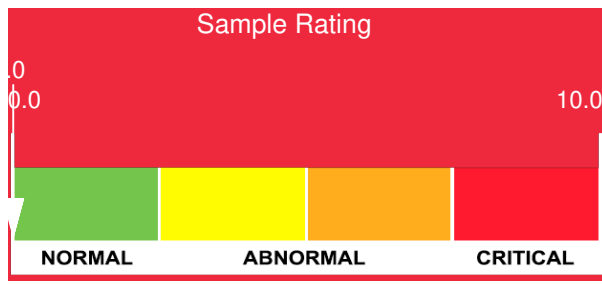
Customer:	System Information	Sample Information
ERGON - CHANDLER 6940 WEST CHANDLER BLVD CHANDLER, AZ 85226 US Attn: COLE ULMER Tel: E-Mail: cole.ulmer@ergon.com	System Volume: 0 gal Bulk Operating Temp: Not Specified Heating Source: Blanket: Fluid: ERGON HYGOLD L500 Make: CEI	Lab No: 06182339 Analyst: Doug Bogart Sample Date: 05/14/24 Received Date: 05/17/24 Completed: 06/04/24 Doug Bogart dougb@wearcheckusa.com

Recommendation: The fluid is suitable for further service. Resample at the next service interval to monitor. All tests and evaluation performed at WearCheck Canada.

Comments: All component wear rates are normal. The water content is negligible. There is no indication of any contamination in the fluid. The AN level is acceptable for this fluid. The condition of the fluid is suitable for further service.

Sample Date	Received Date	Fluid Age	Sample Location	Flash Point (COC)	Water (KF)	Viscosity (40°C)	Acid Number	Solids	GCD 10%	GCD 50%	GCD 90%	GCD % < 335°C
	mm/dd/yy			°F/°C	ppm	cSt	mg/KOH/g	%wt	°F/°C	°F/°C	°F/°C	%
05/14/24	05/17/24	0.0h		435 / 224	31	101	0.04	0.084	691 / 366	812 / 433	910 / 488	3.87
12/07/23	12/20/23	0.0h			2110	99.4	0.07					
Baseline Data				426 / 219		98.9	0.01		693 / 367	813 / 434	937 / 503	2.0

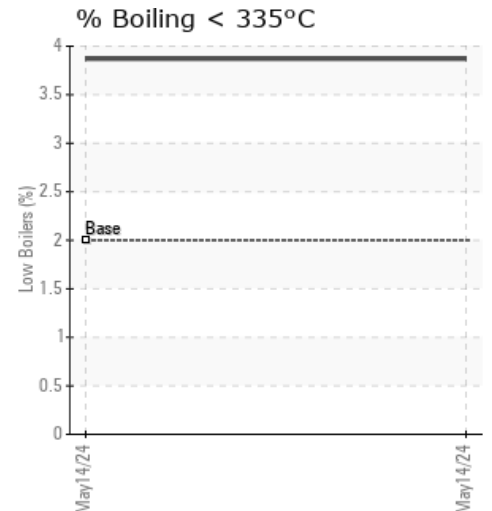
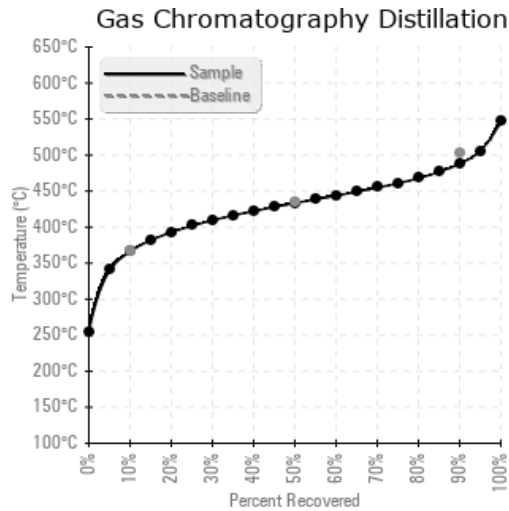




Sample Date	Iron	Chromium	Nickel	Aluminum	Copper	Lead	Tin	Cadmium	Silver	Vanadium	Silicon	Sodium	Potassium	Titanium	Molybdenum	Antimony	Manganese	Lithium	Boron	Magnesium	Calcium	Barium	Phosphorus	Zinc
05/14/24	17	0	0	0	0	0	0	0	0	0	0	0	0	0	0	0	0	0	0	0	0	0	0	0
12/07/23	163	0	0	2	1	7	0	0	0	0	0	0	0	0	0	0	0	0	0	0	0	6	27	4
Baseline Data			0	0						0			0	0				0	0				0	

Elemental analysis results (above) in parts per million (ppm). [10,000 ppm = 1.0%]

GCD Spectrum



Historical Comments

12/07/23	We advise that you follow the water drain-off procedure for this component, and use off-line filtration to improve the cleanliness of the system fluid. We recommend an early resample to monitor this condition. We were unable to perform a particle count due to a high concentration of particles present in this sample. All component wear rates are normal. Moderate concentration of visible dirt/debris present in the fluid. There is a high concentration of water present in the fluid. The AN level is acceptable for this fluid.
----------	------------------------------------------------------------------------------------------------------------------------------------------------------------------------------------------------------------------------------------------------------------------------------------------------------------------------------------------------------------------------------------------------------------------------------------------------------------------------------------------------------------------------------------------------