

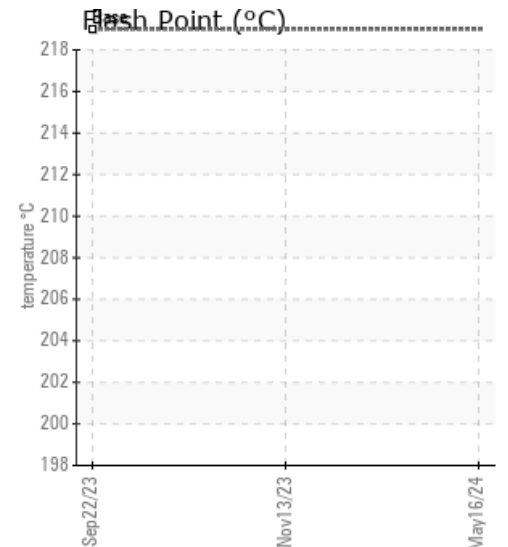
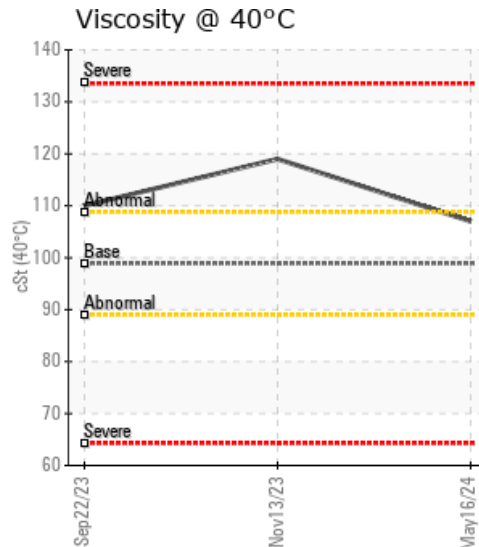
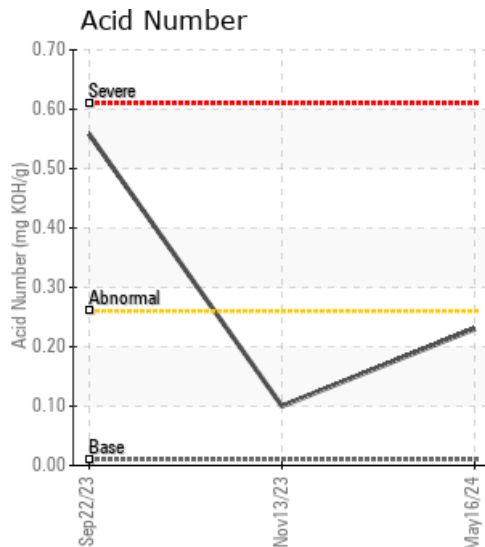
## OIL HEATER

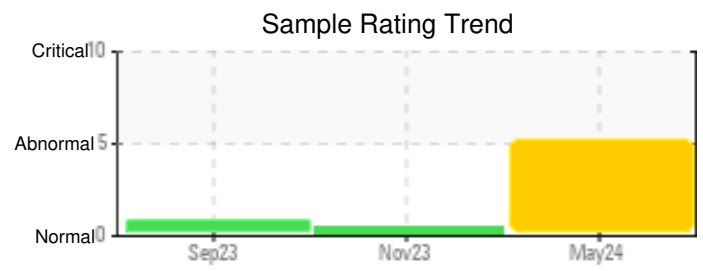
Customer:	System Information	Sample Information
ERGON - BIRMINGPORT 7890 BIRMINGPORT RD MULGA, AL 35118 US Attn: MIKE WHITE Tel: E-Mail: Mike.White@ergon.com	System Volume: 0 gal Bulk Operating Temp: Not Specified Heating Source: Blanket: Fluid: ERGON HYGOLD L500 Make: HEATEC	Lab No: 06184897 Analyst: Doug Bogart Sample Date: 05/16/24 Received Date: 05/20/24 Completed: 05/29/24 Doug Bogart dougb@wearcheckusa.com

Recommendation: We recommend that you vent the expansion tank to remove low boilers which assists in restoring the flash point of the fluid. The low initial boiling point and the low boilers present in the simulated distillation chromatogram indicate contamination with a volatile substance. Please review fluid safety requirements (i.e. flash point) regarding fluid operating temperatures. All tests and evaluation performed at WearCheck Canada.

Comments: Pentane Insolubles levels are severely high. (GCD) Initial Boiling Point is abnormal. (GCD) % < 335°C is marginally high. (GCD) 10% Distillation Point is marginally low.

Sample Date	Received Date	Fluid Age	Sample Location	Flash Point (COC)	Water (KF)	Viscosity (40°C)	Acid Number	Solids	GCD 10%	GCD 50%	GCD 90%	GCD % < 335°C
	mm/dd/yy			°F/°C	ppm	cSt	mg/KOH/g	%wt	°F/°C	°F/°C	°F/°C	%
05/16/24	05/20/24	0.0h	BIRMINGPORT	406 / 208	85	107	0.23	1.62	627 / 331	780 / 416	916 / 491	10.29
11/13/23	11/20/23	0.0h			108.2	119	0.10					
09/22/23	09/29/23	0.0h			162.1	110	0.558					
Baseline Data				426 / 219		98.9	0.01					

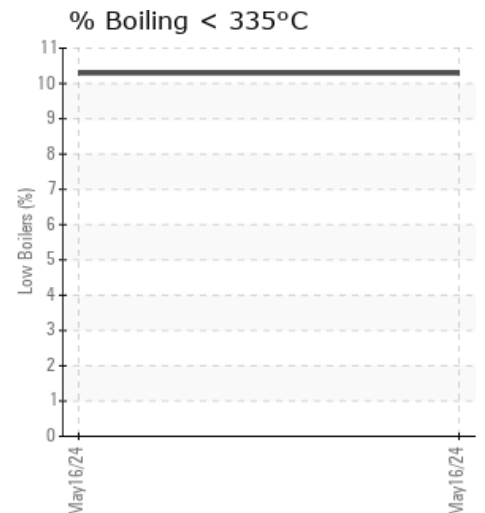
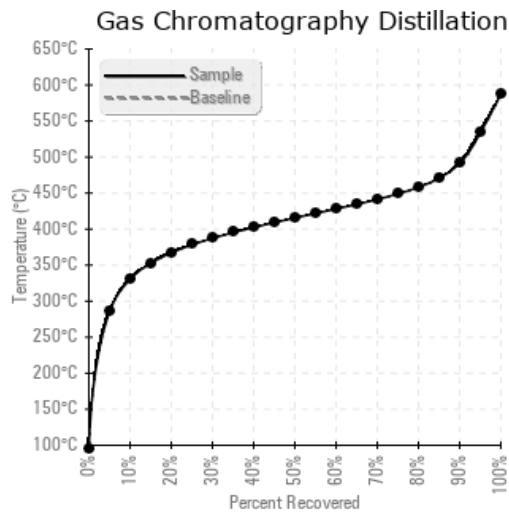




Sample Date	Iron	Chromium	Nickel	Aluminum	Copper	Lead	Tin	Cadmium	Silver	Vanadium	Silicon	Sodium	Potassium	Titanium	Molybdenum	Antimony	Manganese	Lithium	Boron	Magnesium	Calcium	Barium	Phosphorus	Zinc
05/16/24	2	0	0	0	0	0	0	0	0	0	0	0	0	0	0	0	0	0	0	0	0	0	0	0
11/13/23	2	0	0	0	0	0	0	0	0	0	0	0	0	0	0	0	0	0	0	0	0	0	0	0
09/22/23	4	0	0	0	0	0	0	0	0	0	0	0	0	0	0	0	0	0	0	2	0	0	1	0
Baseline Data			0	0						0			0	0				0	0				0	

Elemental analysis results (above) in parts per million (ppm). [10,000 ppm = 1.0%]

GCD Spectrum



Historical Comments

11/13/23	Resample at the next service interval to monitor. All component wear rates are normal. The amount and size of particulates present in the system are acceptable. There is no indication of any contamination in the fluid. The AN level is acceptable for this fluid. The condition of the fluid is suitable for further service.
09/22/23	We recommend you service the filters on this component. Resample at the next service interval to monitor. We were unable to perform a particle count due to a high concentration of particles present in this sample. Please note that this is a corrected copy for data entry update for oil type. All component wear rates are normal. There is a moderate amount of visible silt present in the sample. The AN level is acceptable for this fluid. The condition of the fluid is suitable for further service.