

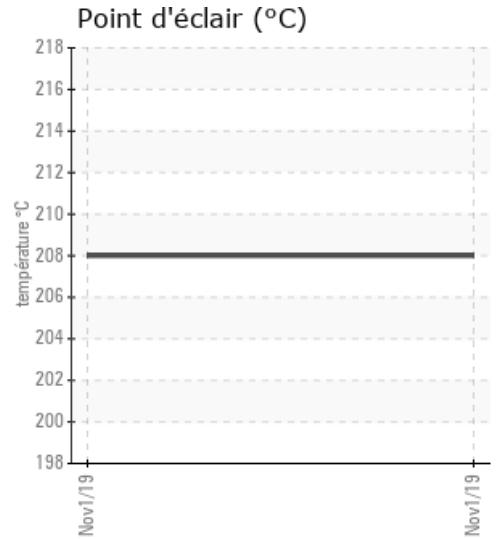
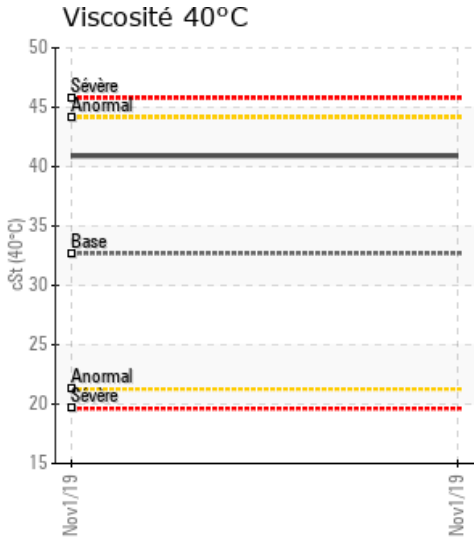
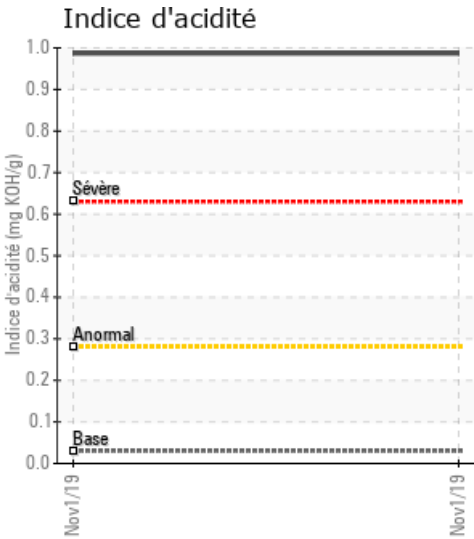
202

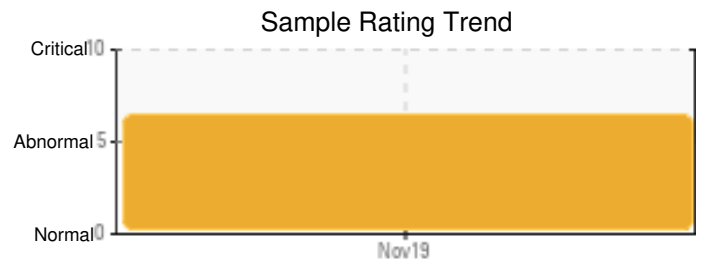
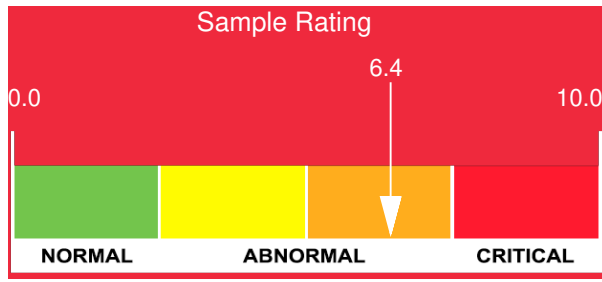
Customer: PTRHTF30151	System Information	Sample Information
LES-ENT-P.E.B. 1190, 1 AVENUE LAC-ST-CHARLES QUEBEC, QC G3G 2S9 Canada Attn: Mike Rheume Tel: (418)849-2841 E-Mail: mikerheume@entpeb.com	System Volume: 2255 ltr Bulk Operating Temp: 325F / 163C Heating Source: Blanket: Fluid: PETRO CANADA CALFLO AF Make: HY-WAY	Lab No: 02344792 Analyst: Jean Lacharite Sample Date: 11/01/19 Received Date: 03/20/20 Completed: 04/21/20 Jean Lacharite jean.lacharite@petrocanadalsp.com

Recommendation: l'AN est trop eleve pour ce systeme. la normale serait en dessous de 0.400 et nous avons 0.987. Les pentanes Insolubles sont a 0.676 resultat eleve. GCD 10% est trop elever et le GCD 90% est aussi trop elever et la viscosite est augmente par 27% du produit Calflo AF initiale. la courbe GCD semble toujours correcte. mais les autres elements cite plus haut nous incite a recommander de changer l'huile. Avec une procedure de nettoyage avec le Petro Canada Flushing Fluid pour enlever toutes presence de solides ou debris et un remplissage a neuf.

Comments:

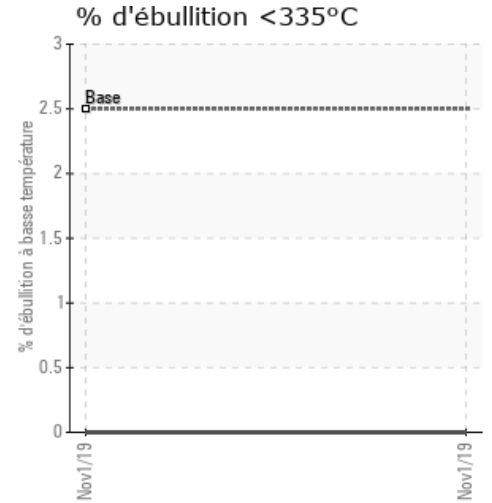
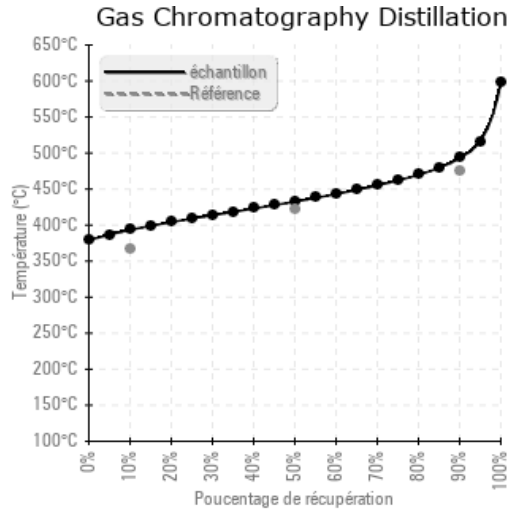
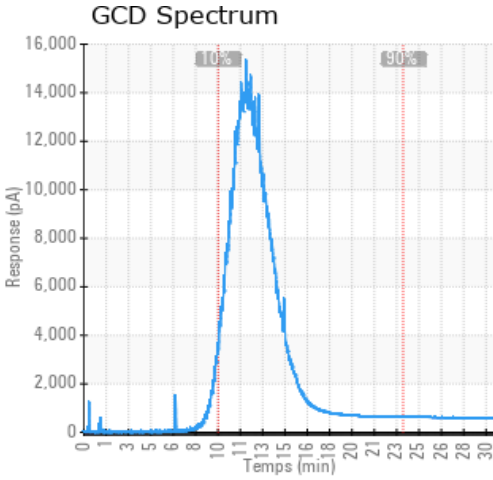
Sample Date	Received Date	Fluid Age	Sample Location	Flash Point (COC)	Water (KF)	Viscosity (40°C)	Acid Number	Solids	GCD 10%	GCD 50%	GCD 90%	GCD % < 335°C
	mm/dd/yy			°F/°C	ppm	cSt	mg/KOH/g	%wt	°F/°C	°F/°C	°F/°C	%
11/01/19	03/20/20	7y	LIGNE A BITUME	406 / 208	46.0	40.9	0.987	0.676	740 / 393	811 / 433	919 / 493	0.00
Baseline Data				435 / 224		32.7	0.03		693 / 367	790 / 421	887 / 475	2.5





Sample Date	Iron	Chromium	Nickel	Aluminum	Copper	Lead	Tin	Cadmium	Silver	Vanadium	Silicon	Sodium	Potassium	Titanium	Molybdenum	Antimony	Manganese	Lithium	Boron	Magnesium	Calcium	Barium	Phosphorus	Zinc
11/01/19	11	0	0	0	2	0	0	0	0	0	6	0	1	0	0	0	0	0	0	1	10	0	111	5
Baseline Data			0	0						0			0	0					0					270

Elemental analysis results (above) in parts per million (ppm). [10,000 ppm = 1.0%]



### Historical Comments


Petro-Canada makes no representation or warranty of any kind, either express or implied, as to the accuracy or completeness of the analysis and assumes no responsibility and shall have no liability whatsoever with respect to such analysis, or a party's use of it. Petro-Canada is a division of HollyFrontier Corporation.