

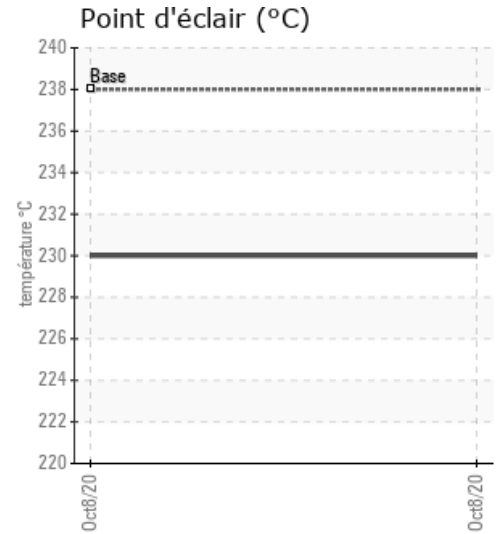
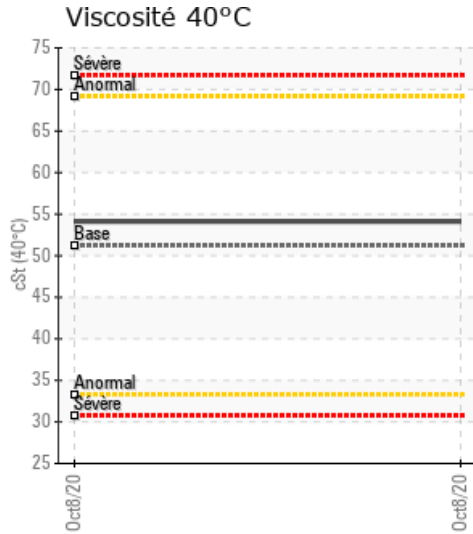
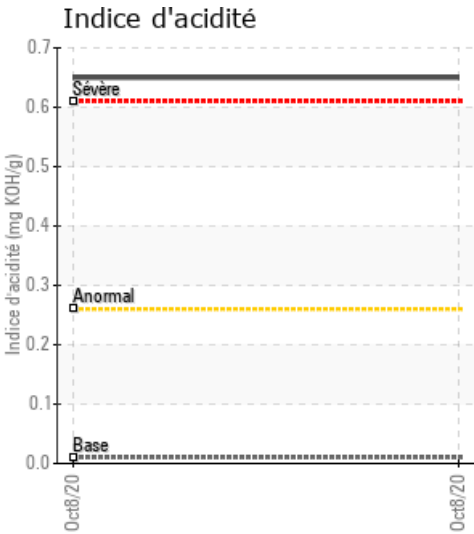
[BOUILLOIRE] USINE ENROBE BEL HORIZON

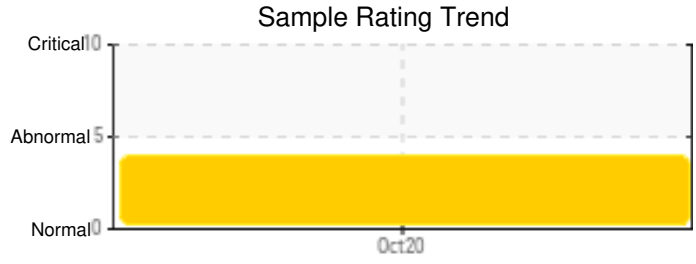
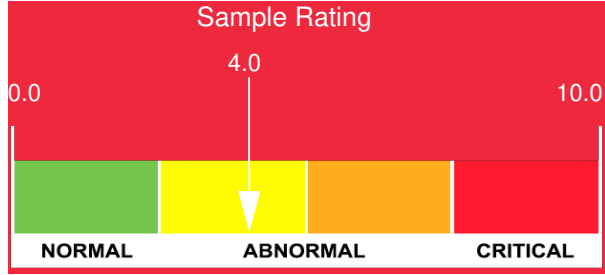
Customer: PTRHTF30157	System Information	Sample Information
DJL CONSTRUCTION 2300 CHEMIN BEL HORIZON CANTON DE HATLEY, QC J0B 2C0 Canada Attn: BERNARD ROYER Tel: (819)574-5548 E-Mail: bernard.royer@euroviaqc.ca	System Volume: 2000 ltr Bulk Operating Temp: 390F / 199C Heating Source: Blanket: Fluid: TOTAL HTO 21 Make: AMERICAN HEATING	Lab No: 02381468 Analyst: Pierre Castagne Sample Date: 10/08/20 Received Date: 10/15/20 Completed: 10/20/20 Pierre Castagne pierre.castagne@petrocanadalsp.com

Recommendation: Il y a une légère trace de bitume dans le système. La température des fractions légère (GCD @10%) est plus basse 404.9 versus 429, la température des fractions lourdes (GCD @ 90%) est plus élevée (492.9 versus 477). Il y a une légère augmentation des solides (pentane Insolubles). Le fluide est à un stage initiale de dégradation thermique. Si possible ventilé le système diminué le volume de l'huile de 10% et remplacer avec de l'huile caloporteur (huile thermique) neuve.

Comments:

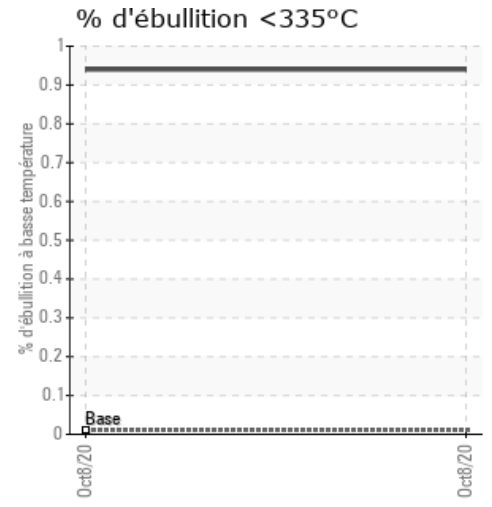
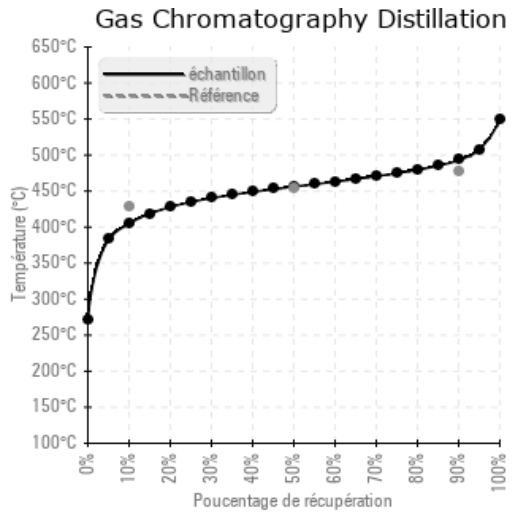
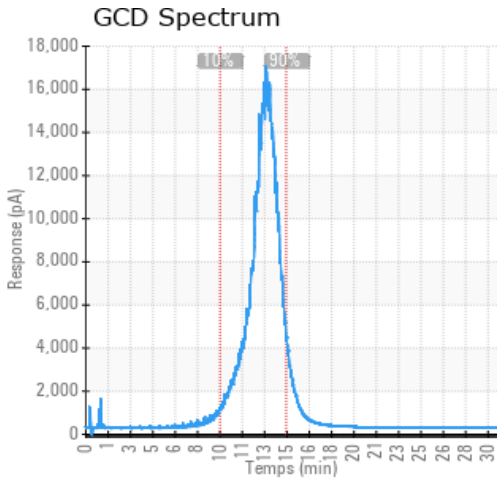
Sample Date	Received Date	Fluid Age	Sample Location	Flash Point (COC)	Water (KF)	Viscosity (40°C)	Acid Number	Solids	GCD 10%	GCD 50%	GCD 90%	GCD % < 335°C
	mm/dd/yy			°F/°C	ppm	cSt	mg/KOH/g	%wt	°F/°C	°F/°C	°F/°C	%
10/08/20	10/15/20	3y	SORTIE BOUILLORE	446 / 230	18.1	54.1	0.65	0.352	761 / 405	853 / 456	919 / 493	0.94
Baseline Data				460 / 238		51.2	0.01		804 / 429	849 / 454	891 / 477	0.01





Sample Date	Iron	Chromium	Nickel	Aluminum	Copper	Lead	Tin	Cadmium	Silver	Vanadium	Silicon	Sodium	Potassium	Titanium	Molybdenum	Antimony	Manganese	Lithium	Boron	Magnesium	Calcium	Barium	Phosphorus	Zinc
10/08/20	0	0	0	0	0	0	0	0	0	0	0	0	0	0	0	0	0	0	0	0	0	0	0	0
Baseline Data			0	0						0			0	0					0				2	

Elemental analysis results (above) in parts per million (ppm). [10,000 ppm = 1.0%]



Historical Comments	

Petro-Canada makes no representation or warranty of any kind, either express or implied, as to the accuracy or completeness of the analysis and assumes no responsibility and shall have no liability whatsoever with respect to such analysis, or a party's use of it. Petro-Canada is a division of HollyFrontier Corporation.