

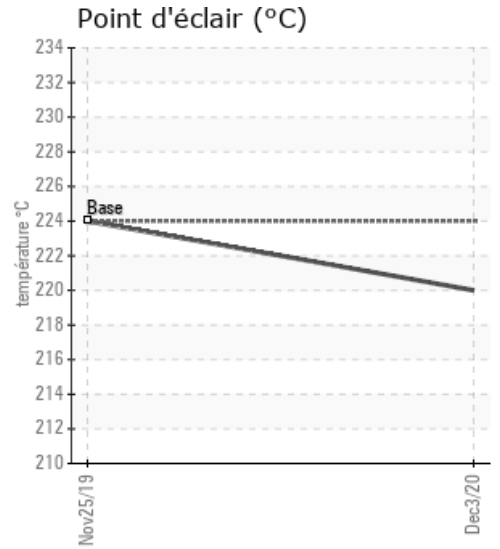
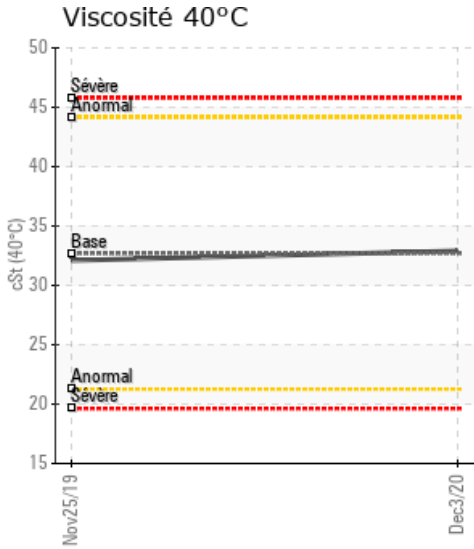
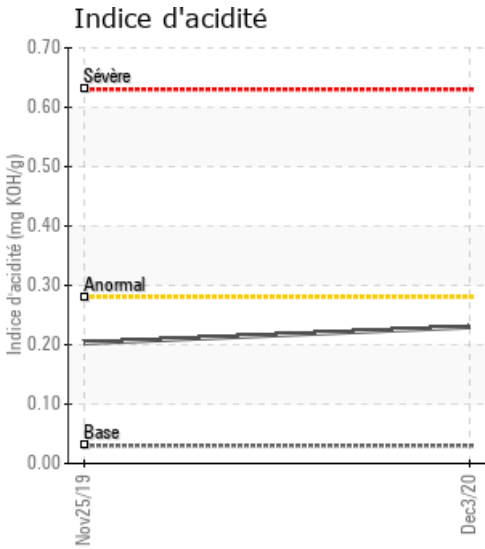
30

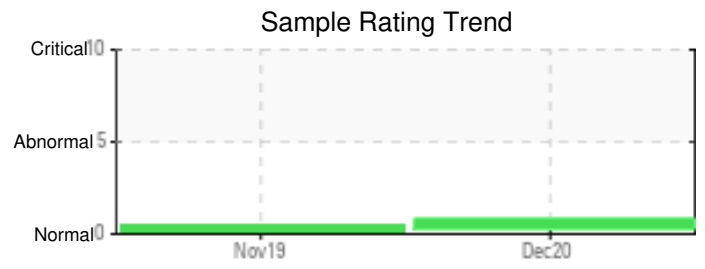
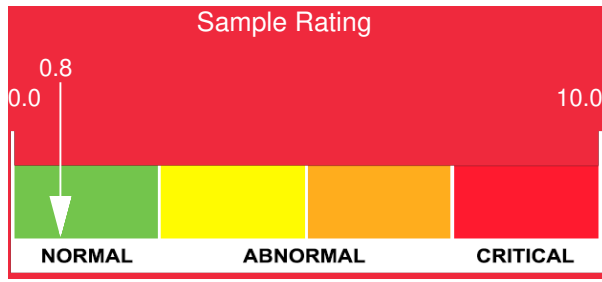
Customer: PTRHTF30151	System Information	Sample Information
LES-ENT-P.E.B. 1190, 1 AVENUE LAC-ST-CHARLES QUEBEC, QC G3G 2S9 Canada Attn: Stephane Devlin Tel: (418)849-2841 E-Mail: usineproduction@entpeb.com	System Volume: 2255 ltr Bulk Operating Temp: 350F / 177C Heating Source: Blanket: Fluid: PETRO CANADA CALFLO AF Make: HY-WAY	Lab No: 02392818 Analyst: Jean Lacharite Sample Date: 12/03/20 Received Date: 12/14/20 Completed: 12/24/20 Jean Lacharite jean.lacharite@hollyfrontier.com

Recommandation: continuer les operations, l'analyse nous donne une petite anomalie sur le GCD a 90%. Mais l'évaluation de la qualité de l'huile se fait sur plusieurs facteurs. Le graphique est tres bien.attention lors des arrêts prolongés, il faut redémarrer progressivement.refaire une analyse dans 12 mois.

Comments:

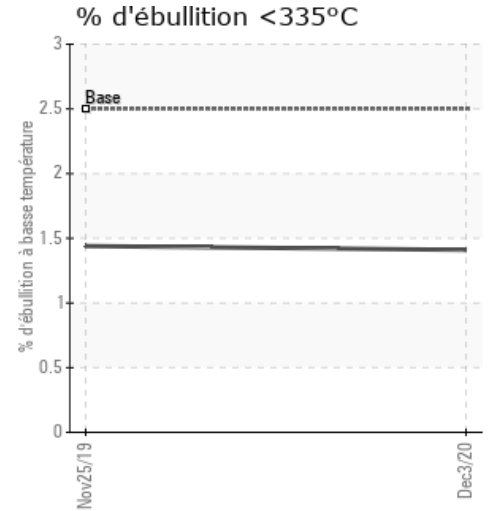
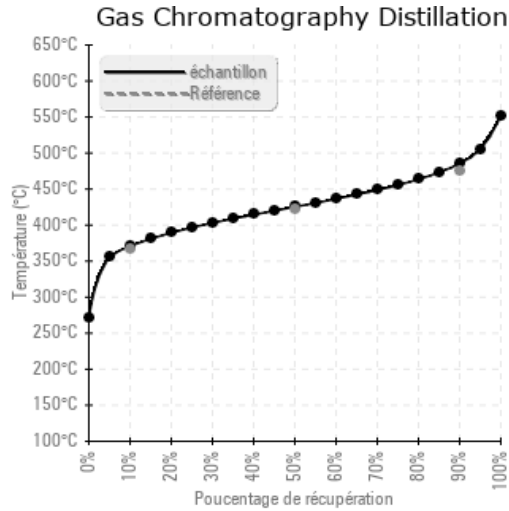
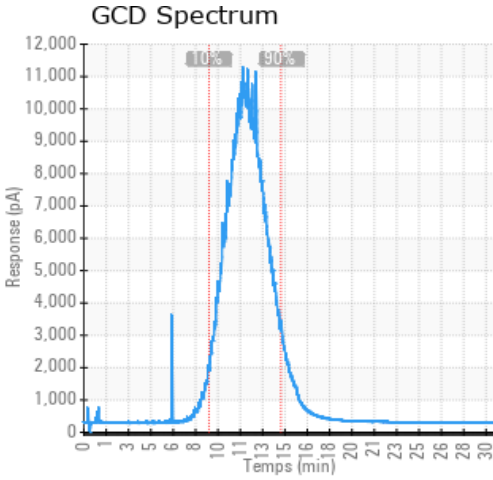
Sample Date	Received Date	Fluid Age	Sample Location	Flash Point (COC)	Water (KF)	Viscosity (40°C)	Acid Number	Solids	GCD 10%	GCD 50%	GCD 90%	GCD % < 335°C
	mm/dd/yy			°F/°C	ppm	cSt	mg/KOH/g	%wt	°F/°C	°F/°C	°F/°C	%
12/03/20	12/14/20	13.0y		428 / 220	283.0	32.9	0.23	0.087	699 / 371	798 / 425	906 / 486	1.41
11/25/19	12/09/19	12.0y		435 / 224	0.5	32.1	0.203	0.097	681 / 360	777 / 414	894 / 479	1.44
Baseline Data				435 / 224		32.7	0.03		693 / 367	790 / 421	887 / 475	2.5





Sample Date	Iron	Chromium	Nickel	Aluminum	Copper	Lead	Tin	Cadmium	Silver	Vanadium	Silicon	Sodium	Potassium	Titanium	Molybdenum	Antimony	Manganese	Lithium	Boron	Magnesium	Calcium	Barium	Phosphorus	Zinc
12/03/20	6	0	0	0	0	0	0	0	0	0	0	0	0	0	0	0	0	0	0	0	0	0	30	0
11/25/19	5	0	0	0	0	0	0	0	0	0	0	0	0	0	0	0	0	0	0	0	0	0	29	0
Baseline Data			0	0						0			0	0					0				270	

Elemental analysis results (above) in parts per million (ppm). [10,000 ppm = 1.0%]



Historical Comments

11/25/19	L'huile est dans les normes a tous les points.

Petro-Canada makes no representation or warranty of any kind, either express or implied, as to the accuracy or completeness of the analysis and assumes no responsibility and shall have no liability whatsoever with respect to such analysis, or a party's use of it. Petro-Canada is a division of HollyFrontier Corporation.