

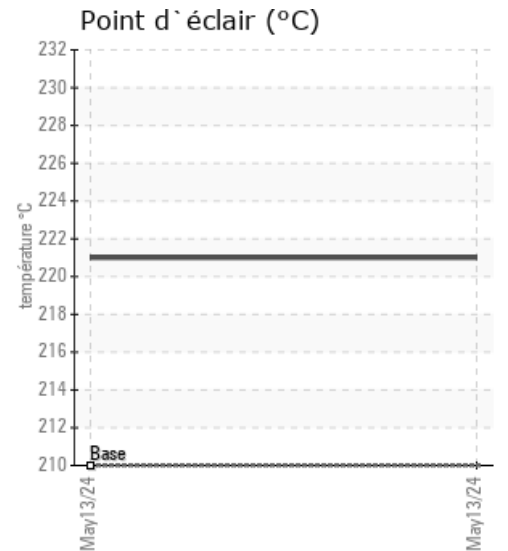
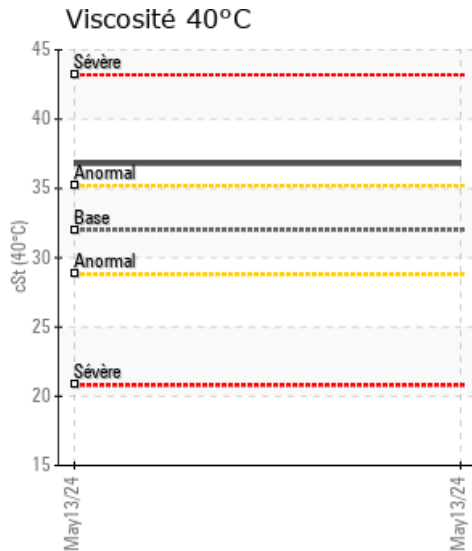
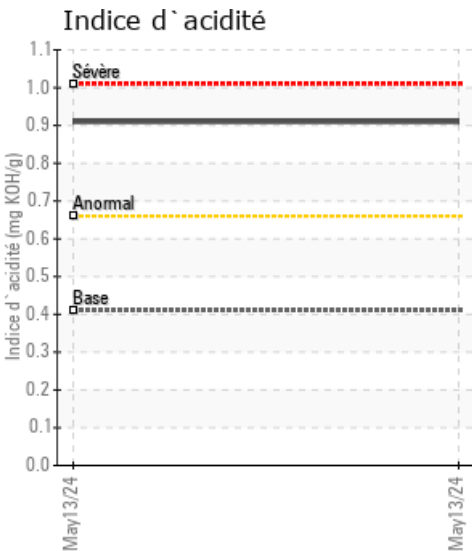
USINE U 52

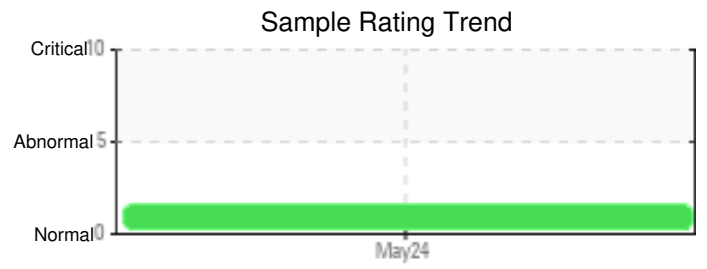
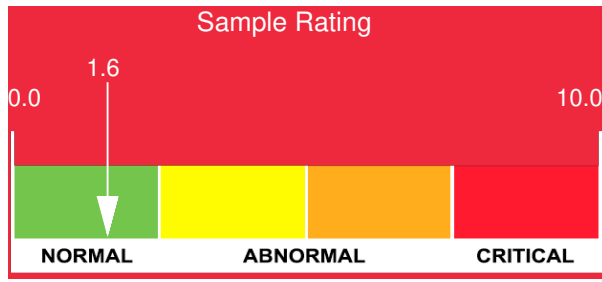
| Customer: PTRHTF60057 | System Information | Sample Information |
|---|---|---|
| Construction Norascon Inc 1705 Rte de L`Aeroport Amos, QC J9T 3A7 CA Attn: Eric Blais Tel: (819)732-3351 E-Mail: eric.blais@norascon.qc.ca | System Volume: 0 gal Bulk Operating Temp: Not Specified Heating Source: Blanket: Fluid: HEAT TRANSFER FLUID ISO 32 Make: | Lab No: 02637790 Analyst: Jean Lacharite Sample Date: 05/13/24 Received Date: 05/27/24 Completed: 06/11/24 Jean Lacharite jean.lacharite@HFSinclair.com |

Recommandation: Les metaux d`usure, la presence d`eau, la viscosité, le point d`éclair sont tous correct. La graphique GCD et les résultats GCD sont ok. les insolubles sont à un bas niveau. Le numéro acide est severe avec un résultat de 0.91. L`AN doit être réduit, la recommandation serait de remplacer 20% de votre fluide Petro-Therm au système par du nouveau Petro-Therm.

Comments: Le niveau AN est supérieur typique pour ce produit.

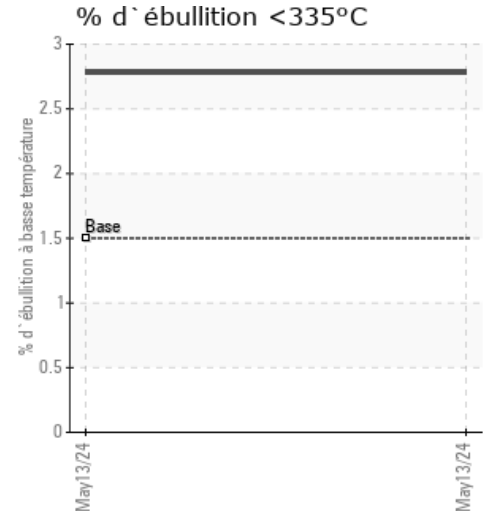
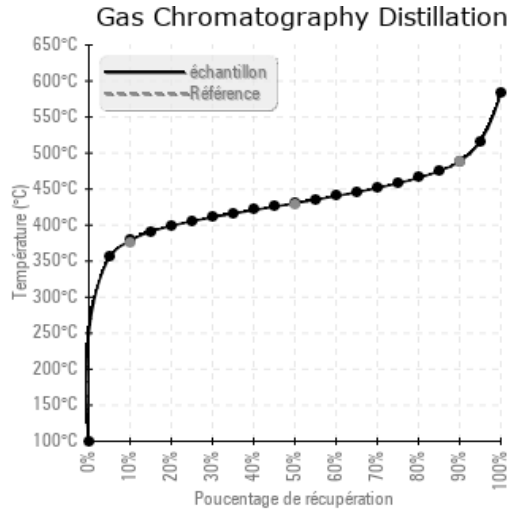
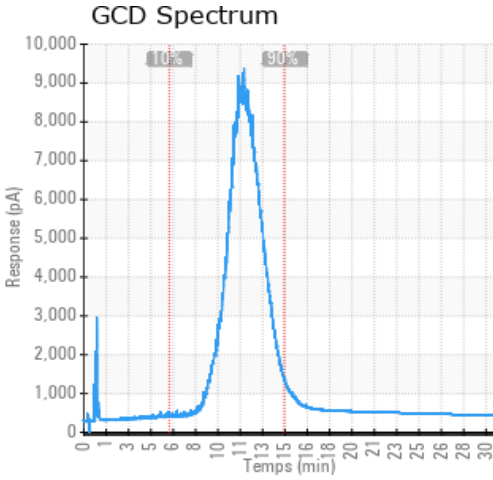
| Sample Date | Received Date | Fluid Age | Sample Location | Flash Point (COC) | Water (KF) | Viscosity (40°C) | Acid Number | Solids | GCD 10% | GCD 50% | GCD 90% | GCD % < 335°C |
|---------------|---------------|-----------|-----------------|-------------------|------------|------------------|-------------|--------|-----------|-----------|-----------|---------------|
| | mm/dd/yy | | | °F/°C | ppm | cSt | mg/KOH/g | %wt | °F/°C | °F/°C | °F/°C | % |
| 05/13/24 | 05/27/24 | 0.0y | | 430 / 221 | 36 | 36.8 | 0.91 | 0.266 | 713 / 379 | 807 / 430 | 911 / 488 | 2.78 |
| Baseline Data | | | | 410 / 210 | | 32 | 0.41 | | 707 / 375 | 802 / 428 | 910 / 488 | 1.5 |





| Sample Date | Iron | Chromium | Nickel | Aluminum | Copper | Lead | Tin | Cadmium | Silver | Vanadium | Silicon | Sodium | Potassium | Titanium | Molybdenum | Antimony | Manganese | Lithium | Boron | Magnesium | Calcium | Barium | Phosphorus | Zinc |
|----------------------|------|----------|--------|----------|--------|------|-----|---------|--------|----------|---------|--------|-----------|----------|------------|----------|-----------|---------|-------|-----------|---------|--------|------------|------|
| 05/13/24 | 9 | 0 | 0 | 0 | 0 | 0 | 0 | 0 | 0 | 0 | 0 | 0 | 0 | 0 | 0 | 0 | 0 | 0 | 0 | 0 | 0 | 0 | 43 | 0 |
| Baseline Data | | | 0 | 0 | | | | | | 0 | | | 0 | 0 | | | | | 5 | | | | 250 | |

Elemental analysis results (above) in parts per million (ppm). [10,000 ppm = 1.0%]



Historical Comments

| |
|--|
| |
| |
| |
| |
| |

Petro-Canada makes no representation or warranty of any kind, either express or implied, as to the accuracy or completeness of the analysis and assumes no responsibility and shall have no liability whatsoever with respect to such analysis, or a party's use of it. Petro-Canada is a division of HollyFrontier Corporation.