

LIEBHERR

CONSTRUCTION EQUIPMENT



LIEBHERR LH50M 077376-1203 - Coolant

Sample No: LH0186223

Oil Type: CONVENTIONAL COOLANT



LIEBHERR CANADA LTEE
 444 AVENUE DE LA FRICHE
 DOLBEAU-MISTASSINI, QC
 CA G8L 3M7
 Contact: Martin Gagnon
 martin.gagnon@liebherr.com
 T:
 F: (418)276-9844



SAMPLE INFORMATION

Sample Number	LH0186223	LH0109456	---	---
Sample Date	28 Dec 2020	24 Jan 2017	---	---
Machine Hours	29000	5422	---	---
Sample Status	ABNORMAL	ABNORMAL	---	---



COOLANT CONDITION

Boron	ppm	105	207	---	---
Phosphorus	ppm	35	651	---	---
Sodium	ppm	2791	1318	---	---
Potassium	ppm	397	2498	---	---
Silicon	ppm	7	26	---	---
pH	Scale 0-14	8.57	8.16	---	---
Reserve Alkalinity	Scale 0-20	4.1	5.0	---	---
Molybdenum	ppm	3	26	---	---
Nitrites	ppm	320	560	---	---
Percentage Glycol	%	52.0	46.0	---	---
Freezing Point	°C	-40	-32	---	---



CONTAMINATION

Magnesium	ppm	1	4	---	---
Calcium	ppm	2	<1	---	---
Coolant Appearance		Very cld	Oil	---	---
Coolant Color		Pink	Grn/Yellow	---	---
Sand/Dirt	scalar	MODER	NONE	---	---
Debris	scalar	NONE	VLITE	---	---
Precipitate	scalar	NONE	NONE	---	---
Silt	scalar	NONE	NONE	---	---



CORROSION

Iron	ppm	<1	0	---	---
Aluminum	ppm	5	<1	---	---
Copper	ppm	<1	<1	---	---
Lead	ppm	<1	0	---	---
Tin	ppm	<1	0	---	---

Diagnosis

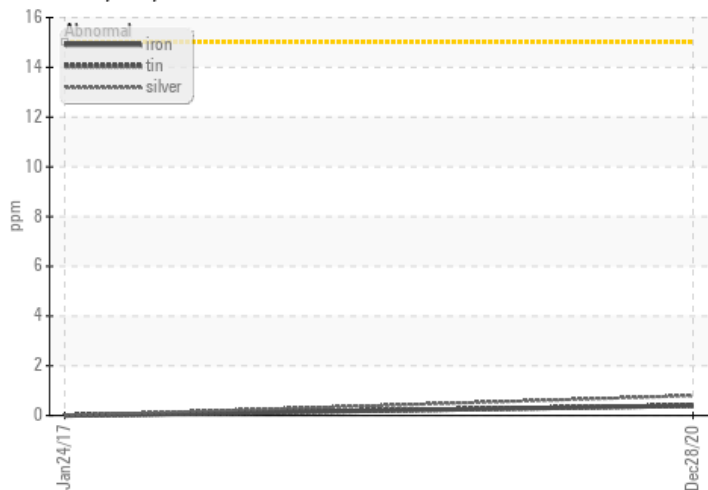
The coolant change at the time of sampling has been noted. Resample at the next service interval to monitor. All metal levels are normal indicating no corrosion in the cooling system. Moderate concentration of visible dirt/debris present in the coolant. The reserve alkalinity of this fluid is lower than acceptable. The coolant is cloudy indicating either an overconcentration of coolant additives, or a mixing of incompatible coolant technologies. The low nitrite level indicates reduced cavitation protection which leads to corrosion and ammonia formation. The pH level of this fluid is within the acceptable limits.

Depot: LBADOL
 Unique No: 5159459
 Signed: Kevin Marson
 Report Date: 08 Jan 2021

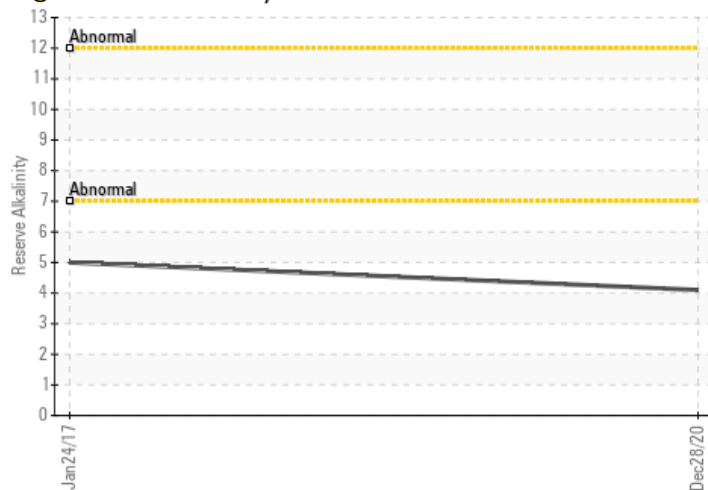


GRAPHS

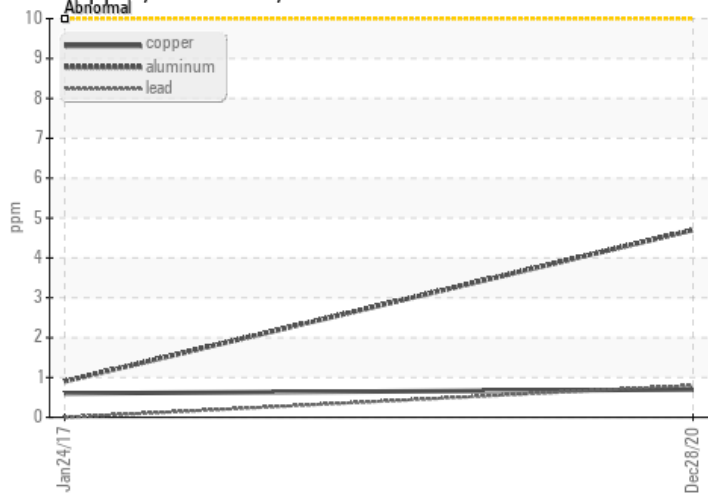
Iron/Tin/Silver



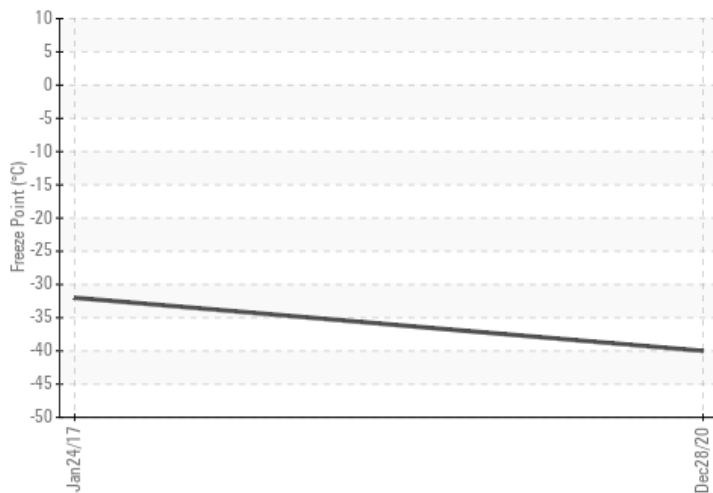
Reserve Alkalinity



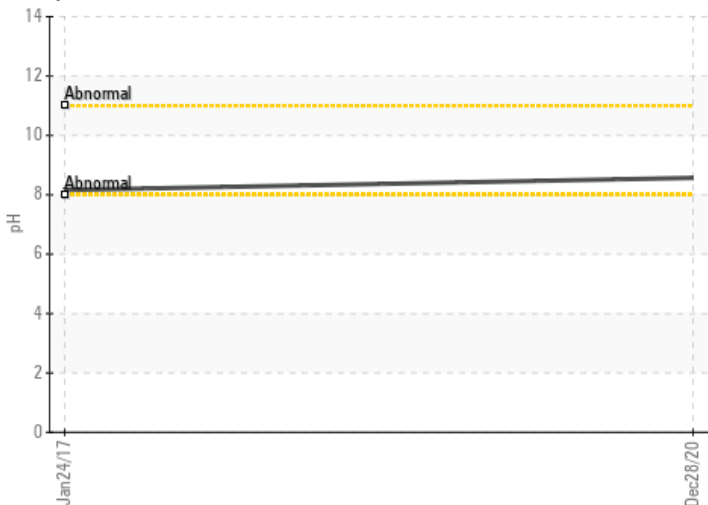
Copper/Aluminum/Lead



Freeze Point



pH



Nitrites

