

LIEBHERR

CONSTRUCTION EQUIPMENT



2019.04.1185 - Coolant

Sample No: LH0285036

Oil Type: EXTENDED LIFE COOLANT



SAMPLE INFORMATION

Sample Number	LH0285036	---	---	---
Sample Date	20 Feb 2024	---	---	---
Machine Hours	0	---	---	---
Sample Status	ABNORMAL	---	---	---

LIEBHERR CANADA LTD. - REMAN
 1015 SUTTON DRIVE
 BURLINGTON, ON
 CA L7L 5Z8
 Contact: Morteza Mahmoudi
 morteza.mahmoudi@liebherr.com
 T: (905)319-9222
 F: (905)319-6622



COOLANT CONDITION

Boron	ppm	19	---	---	---
Phosphorus	ppm	1	---	---	---
Sodium	ppm	14066	---	---	---
Potassium	ppm	3980	---	---	---
Silicon	ppm	46	---	---	---
pH	Scale 0-14	7.81	---	---	---
Reserve Alkalinity	Scale 0-20	4.0	---	---	---
Molybdenum	ppm	412	---	---	---
Nitrites	ppm	440	---	---	---
Percentage Glycol	%	56.4	---	---	---
Freezing Point	°C	-46	---	---	---

Diagnosis

Drain system and refill with 50/50 premix of manufacturer recommended coolant. All metal levels are normal indicating no corrosion in the cooling system. Hardness is elevated. Elevated hardness can allow scale formation that will reduce cooling system effectiveness. The pH level of this fluid is within the acceptable limits. The reserve alkalinity of this fluid is acceptable.



CONTAMINATION

Magnesium	ppm	13	---	---	---
Calcium	ppm	9	---	---	---
Coolant Appearance		Clear	---	---	---
Coolant Color		Orange	---	---	---
Sand/Dirt	scalar	NONE	---	---	---
Debris	scalar	NONE	---	---	---
Precipitate	scalar	NONE	---	---	---
Silt	scalar	NONE	---	---	---



CORROSION

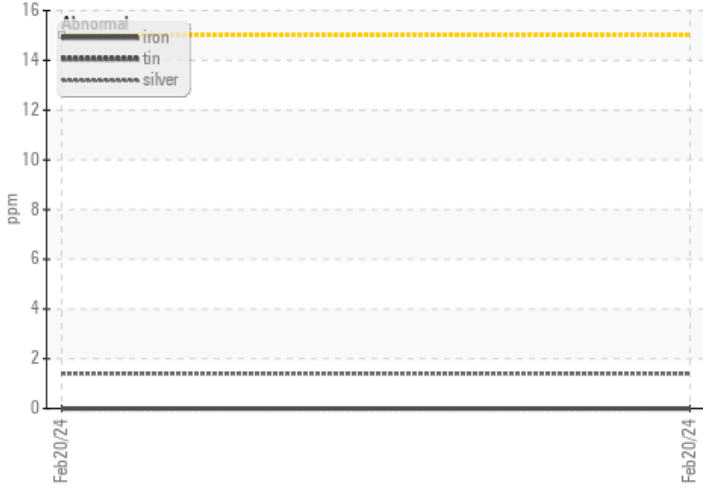
Iron	ppm	0	---	---	---
Aluminum	ppm	5	---	---	---
Copper	ppm	2	---	---	---
Lead	ppm	0	---	---	---
Tin	ppm	0	---	---	---

Depot: REMAN
 Unique No: 5734372
 Signed: Kevin Marson
 Report Date: 23 Feb 2024

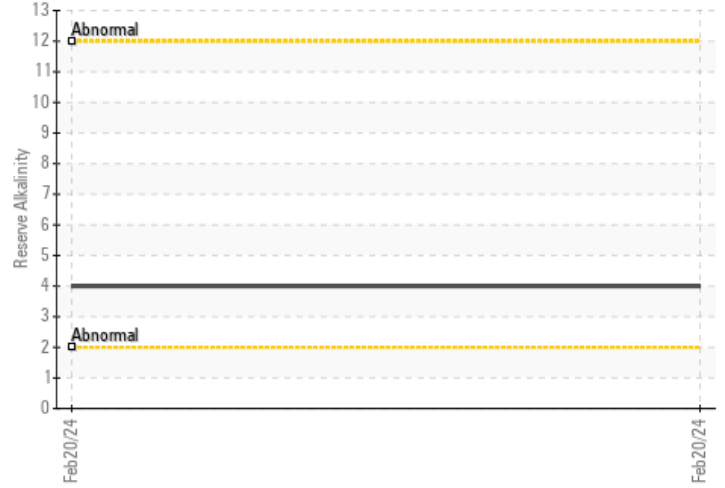


GRAPHS

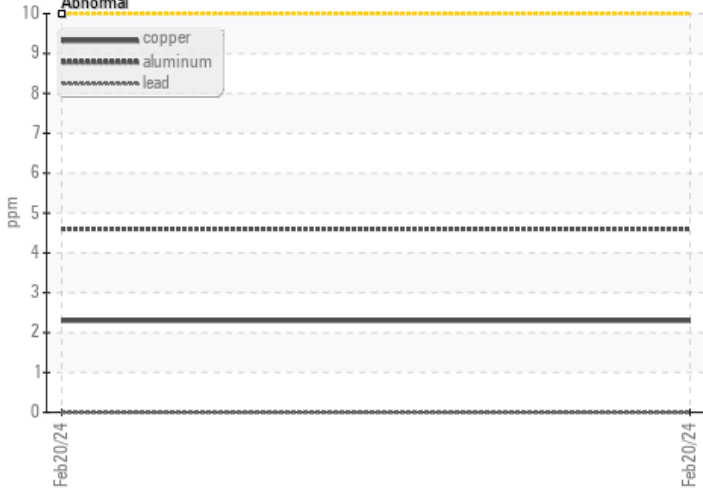
Iron/Tin/Silver



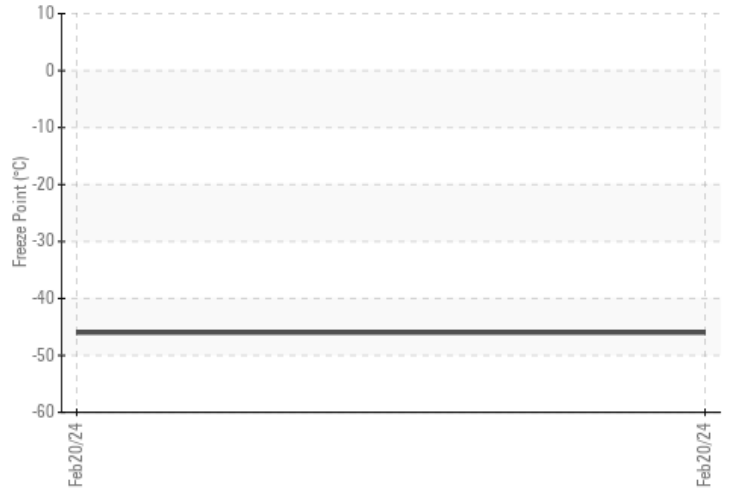
Reserve Alkalinity



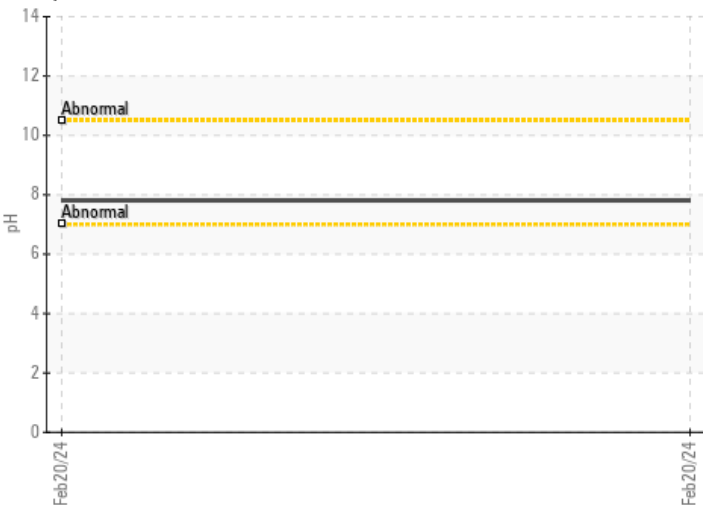
Copper/Aluminum/Lead



Freeze Point



pH



Nitrites

