

LIEBHERR

CONSTRUCTION EQUIPMENT



LIEBHERR LTM1070-4.2 060759 - Coolant

Sample No: LH0259055

Oil Type: CONVENTIONAL COOLANT



SAMPLE INFORMATION

Sample Number	LH0259055	---	---	---
Sample Date	23 Jan 2024	---	---	---
Machine Hours	0	---	---	---
Sample Status	SEVERE	---	---	---

LIEBHERR USA CO - MOBILE AND CRAWLER CRANES
4100 CHESTNUT AVENUE
NEWPORT NEWS, VA
US 23607

Contact: TERENCE VANDERLENDE
TERENCE.VANDERLENDE@LIEBHERR.COM

T:
F:



COOLANT CONDITION

Boron	ppm	3	---	---	---
Phosphorus	ppm	19	---	---	---
Sodium	ppm	5008	---	---	---
Potassium	ppm	631	---	---	---
Silicon	ppm	61	---	---	---
pH	Scale 0-14	7.97	---	---	---
Reserve Alkalinity	Scale 0-20	---	---	---	---
Molybdenum	ppm	<1	---	---	---
Nitrites	ppm	560	---	---	---
Percentage Glycol	%	50.9	---	---	---
Freezing Point	°C	-35	---	---	---

Diagnosis

We recommend drain/flush system, and refill with 50/50 antifreeze water mixture. We advise that you replenish the supplemental coolant additives (SCAs) and add per manufacturer's recommendations. The lead level is severe. There is no indication of any contamination in the coolant. The carboxylate level of this fluid is acceptable. Glycol and nitrite levels are acceptable. The pH level of this fluid is within the acceptable limits.



CONTAMINATION

Magnesium	ppm	26	---	---	---
Calcium	ppm	53	---	---	---
Coolant Appearance		normal	---	---	---
Coolant Color		Pink	---	---	---



CORROSION

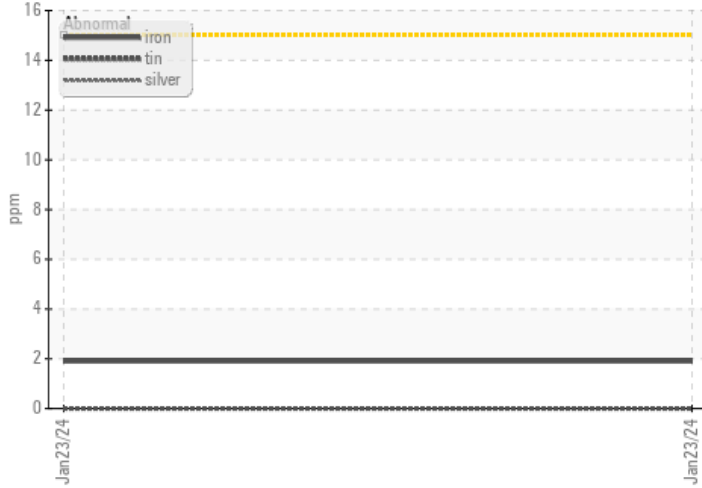
Iron	ppm	2	---	---	---
Aluminum	ppm	2	---	---	---
Copper	ppm	4	---	---	---
Lead	ppm	49	---	---	---
Tin	ppm	0	---	---	---

Depot: LIENEW
Unique No: 10847947
Signed: Jonathan Hester
Report Date: 30 Jan 2024

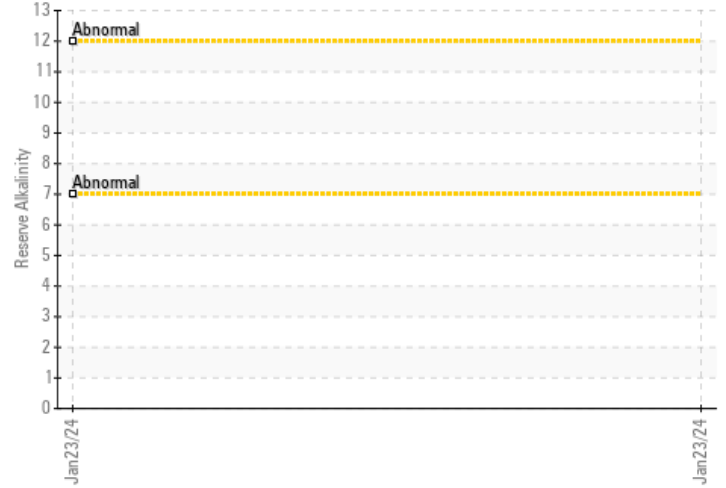


GRAPHS

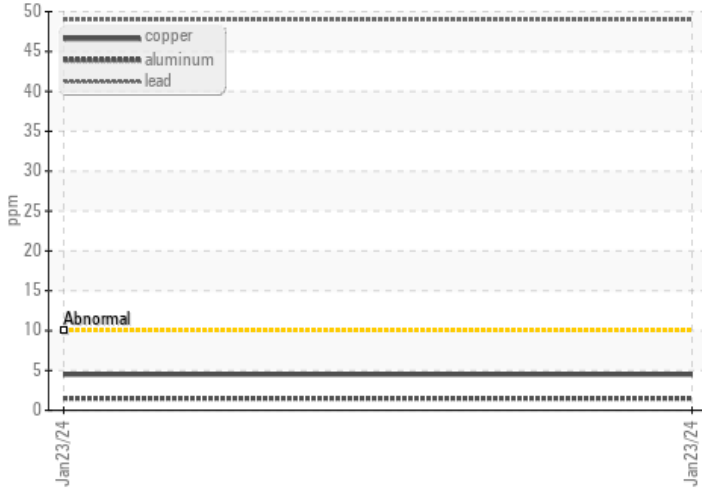
Iron/Tin/Silver



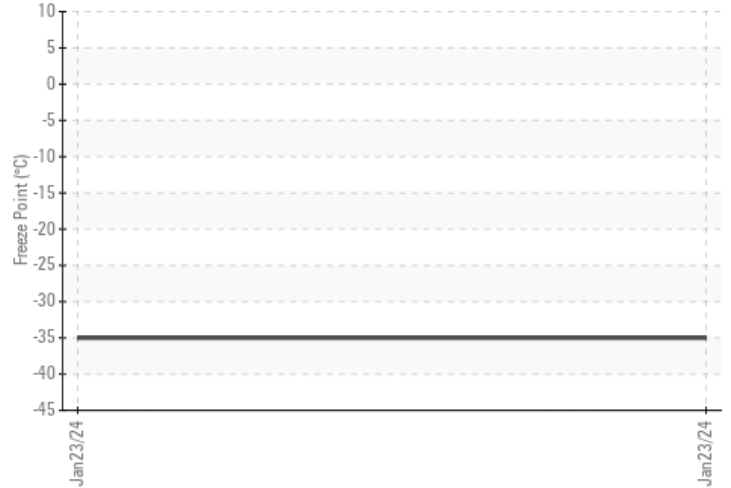
Reserve Alkalinity



● Copper/Aluminum/Lead



Freeze Point



pH



Nitrites

