

LIEBHERR

CONSTRUCTION EQUIPMENT



LIEBHERR LTM1130-5.1066718 - Coolant

Sample No: LH0259095

Oil Type: CONVENTIONAL COOLANT



SAMPLE INFORMATION

Sample Number	LH0259095	---	---	---
Sample Date	14 Feb 2024	---	---	---
Machine Hours	0	---	---	---
Sample Status	ABNORMAL	---	---	---

LIEBHERR USA CO - MOBILE AND CRAWLER CRANES
 4100 CHESTNUT AVENUE
 NEWPORT NEWS, VA
 US 23607
 Contact: CHRIS JONES
 chris.jones@liebherr.com
 T: (757)245-5251
 F:



COOLANT CONDITION

Boron	ppm	0	---	---	---
Phosphorus	ppm	9	---	---	---
Sodium	ppm	4249	---	---	---
Potassium	ppm	1045	---	---	---
Silicon	ppm	17	---	---	---
pH	Scale 0-14	7.56	---	---	---
Reserve Alkalinity	Scale 0-20	---	---	---	---
Molybdenum	ppm	2	---	---	---
Nitrites	ppm	488	---	---	---
Percentage Glycol	%	53.4	---	---	---
Freezing Point	°C	-43	---	---	---

Diagnosis

No corrective action is recommended at this time. Oil and filter change at the time of sampling has been noted. The lead level is abnormal. The copper level is abnormal. There is no indication of any contamination in the coolant. Carboxylate test failed. Glycol and nitrite levels are acceptable. The pH level of this fluid is within the acceptable limits.



CONTAMINATION

Magnesium	ppm	11	---	---	---
Calcium	ppm	43	---	---	---
Coolant Appearance		normal	---	---	---
Coolant Color		Pink	---	---	---



CORROSION

Iron	ppm	<1	---	---	---
Aluminum	ppm	1	---	---	---
Copper	ppm	12	---	---	---
Lead	ppm	28	---	---	---
Tin	ppm	<1	---	---	---

Depot: LIENEW
 Unique No: 10886733
 Signed: Jonathan Hester
 Report Date: 22 Feb 2024

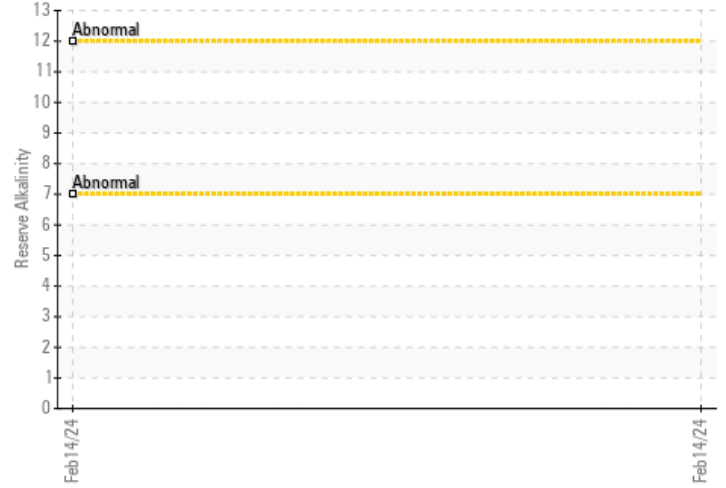


GRAPHS

Iron/Tin/Silver



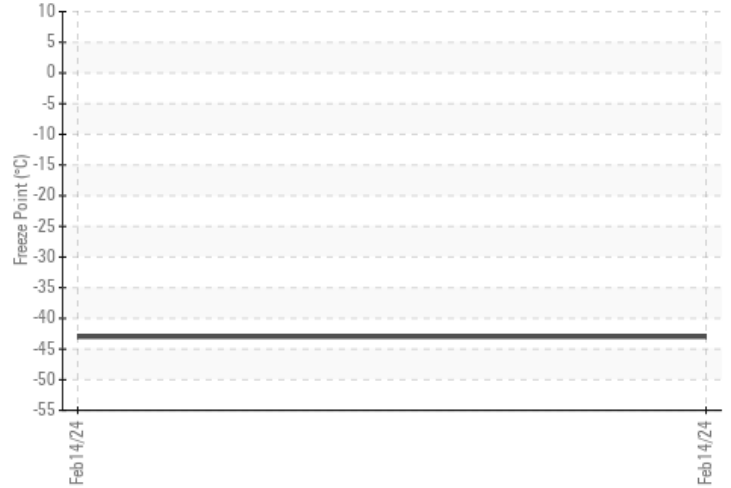
Reserve Alkalinity



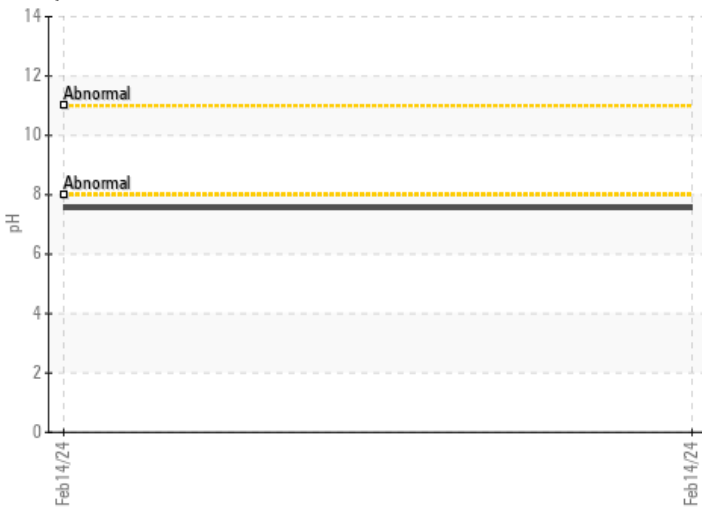
Copper/Aluminum/Lead



Freeze Point



pH



Nitrites

